

Converting Colors

RGB(197, 149, 141)

Have a look what the booklet for
RGB(197, 149, 141) contains.

RGB(197, 149, 141)	3
<i>Conversions</i>	4
<i>Details</i>	6
<i>Harmonies</i>	11
<i>Previews</i>	23
<i>Color Blindness Simulation</i>	26
<i>CSS Examples</i>	29

Color

RGB(197, 149, 141)

Conversions

Conversions Part 1

Format	Color
Hex	C5958D
RGB	197, 149, 141
RGB Percent	77%, 58%, 55%
CMY	0.2275, 0.4157, 0.4471
CMYK	0.00, 0.24, 0.28, 0.23
HSL	9°, 33%, 66%
HSV	9°, 28%, 77%
XYZ	38.5811, 35.2883, 29.9772
YIQ	162.4400, 31.1760, 7.6880

Conversions

Conversions Part 2

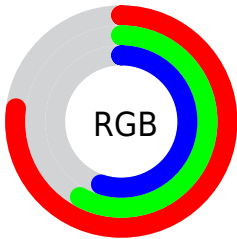
Format	Color
R _Y B	197, 150, 141
Decimal	12948877
CIE Lab	65.97, 16.88, 11.22
CIE LCh	66, 20.271, 33.618
Yxy	35.2883, 0.3715, 0.3398
Android (android.graphics.Color)	4291138957 (0xFFC5958D)
YUV	162.4400, -10.5699, 30.3091
Hunter-Lab	59.4040, 11.9736, 11.6631

Details

The RGB color **197, 149, 141** is a light color, and the websafe version is hex **CC9999**. A complement of this color would be **141, 189, 197**, and the grayscale version is **163, 163, 163**.

A 20% lighter version of the original color is **255, 203, 195**, and **142, 98, 91** is the 20% darker color. If you saturate the color by 10%, you get **197, 132, 121**, and if you desaturate by 10%, it is **197, 166, 161**.

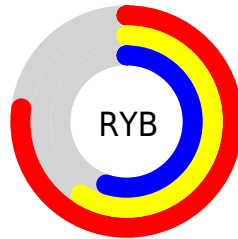
Distribution



Red (77%)

Green (58%)

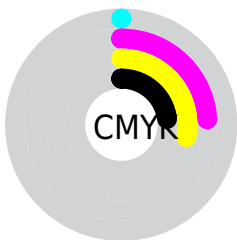
Blue (55%)



Red (77%)

Yellow (59%)

Blue (55%)

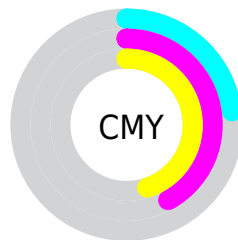


Cyan (0%)

Magenta (24%)

Yellow (28%)

Black (23%)



Cyan (23%)

Magenta (42%)

Yellow (45%)

Brightness & Saturation Gradients

These gradients show how the RGB color 197, 149, 141 changes by changing the brightness by 10 percent. The first figure shows a shift by +10% for each color and the second figure -10%.

Similar to the brightness gradients but the following saturation gradients show a change of the RGB color 197, 149, 141 by changing the saturation by 10% instead.

 197, 149, 141


255, 255, 255

 255, 203, 195


 255, 231, 223

 255, 255, 251

 197, 149, 141

 169, 123, 115

 142, 98, 91

 116, 74, 67

 90, 51, 45

 65, 29, 25

 43, 7, 0

 0, 0, 0

 197, 149, 141

 197, 132, 121

 197, 149, 141

 197, 166, 161

■ 197, 115, 102

■ 197, 183, 180

■ 197, 98, 82

■ 197, 200, 200

■ 197, 81, 62

■ 197, 217, 220

■ 197, 65, 43

■ 197, 233, 240

■ 197, 48, 23

■ 197, 250, 255

■ 197, 31, 3

■ 197, 255, 255

■ 197, 28, 0

Harmonies

Analogous

The Analogous color harmony consists of three colors that are next to each other on the color wheel.



197, 147, 159



197, 149, 141



188, 154, 128

Triad

The Triadic color harmony groups three colors that are evenly spaced from another and form a triangle on the color wheel.



197, 149, 141



131, 169, 144



142, 161, 196

Complementary

The Complementary color scheme is a pair of colors which are on the opposite of each other on the color wheel.



197, 149, 141



141, 189, 197

Split Complementary

Split-complementary colors differ from the complementary color scheme. The scheme consists of three colors, the original color and two neighbors of the complement color.



120, 167, 192



197, 149, 141



115, 171, 162

Square

The Square scheme is like the rectangle color scheme, but the four colors are evenly spaced on the color wheel.



197, 149, 141



152, 165, 130



110, 170, 180



166, 155, 191

Rectangle

The Rectangle color scheme consists of four colors that form a rectangle on the color wheel.



197, 149, 141



178, 158, 124



110, 170, 180



134, 163, 196

Sweetspot

The Sweet Spot groups the original color and five complimentary colors.



197, 149, 141



255, 235, 232



197, 141, 190



128, 115, 113



0, 0, 0



128, 128, 128

Same Dimension

The Same Dimension uses a secret algorithm to generate beautiful new colors.



197, 149, 141



255, 181, 168



197, 176, 141



99, 91, 90



163, 23, 0



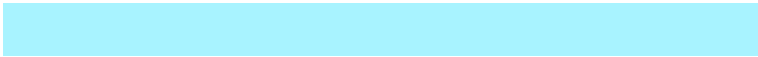
36, 5, 0

Inverse Universe

The Inverse Universe completely reimagines the original color for something new.



141, 189, 197



168, 243, 255



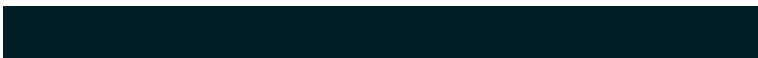
141, 162, 197



90, 98, 99



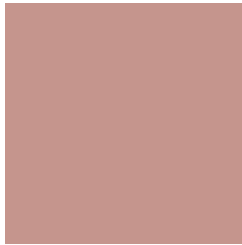
0, 140, 163



0, 31, 36

Previews

White Background



This preview shows how the RGB color 197, 149, 141 looks on a white background.

Color Contrast Check

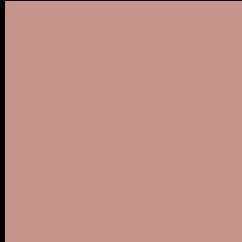
Large Text (above 18pt) WCAG AA × Fail

Any Text WCAG AA × Fail

Large Text (above 18pt) WCAG AAA × Fail

Any Text WCAG AAA × Fail

Black Background



This preview shows how the RGB color 197, 149, 141 looks on a black background.

Color Contrast Check

Large Text (above 18pt) WCAG AA ✓ Pass

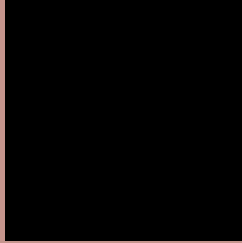
Any Text WCAG AA ✓ Pass

Large Text (above 18pt) WCAG AAA ✓ Pass

Any Text WCAG AAA ✓ Pass

If you want to check with other color combinations, try the [Color Contrast Checker](#).

RGB 197, 149, 141 Background



This preview shows how black text looks on a background with the RGB color 197, 149, 141.



This preview shows how white text looks on a background with the RGB color 197, 149, 141.

Color Blindness Simulation

Color vision deficiency is a very complex topic, and I could not describe the different causes any better than Wikipedia does, so if you want to learn more, you should check out their [article about color blindness](#).

Dichromacy



Original Color
197, 149, 141

Protanopia
167, 160, 147

Deuteranopia
184, 155, 140



Tritanopia
199, 146, 158

Trichromacy



Original Color

197, 149, 141

Protanomaly

178, 156, 145

Deuteranomaly

189, 153, 140

Tritanomaly

198, 147, 152

Monochromacy



Original Color

197, 149, 141

Achromatopsia

162, 162, 162

Achromatomaly

175, 157, 154

CSS Examples

Text

The CSS property to change the color of the text to RGB 197, 149, 141 is called "color". The color property can be set on classes, ids or directly on the HTML element.

This example shows how text in the color `rgb(197, 149, 141)` looks like.

```
.text, #text, p{  
    color:rgb(197, 149, 141)  
}
```

If you want to add a text shadow in that color use the text-shadow property, you can generate a text shadow directly with our [CSS Text Shadow Generator](#).

Here you see how black text with a 4 pixel rgb(197, 149, 141) colored shadow looks like.

```
.shadow{ text-shadow: 4px 4px 2px rgb(197, 149, 141) }
```

Border

The CSS property to change the border of an element to RGB 197, 149, 141 is called "border". The border property can be set on classes, ids or directly on the HTML element.

This example shows the color as border, it can be applied via the CSS property "border" or "border-color".

```
.border, #border, table{ border:4px solid rgb(197, 149, 141) }
```

If only the border color should be changed use the property `border-color`.

```
.border{ border-color:rgb(197, 149, 141) }
```

If you want to add a box shadow in that color use:

Here you see how a box with a 4 pixel `rgb(197, 149, 141)` colored shadow looks like.

```
.boxshadow{ -moz-box-shadow:4px 4px 4px  
4px rgb(197, 149, 141); -webkit-box-  
shadow:4px 4px 4px 4px rgb(197, 149, 141);  
box-shadow:4px 4px 4px 4px rgb(197, 149,  
141) }
```

Background

The CSS property to change the background color of an element to RGB 197, 149, 141 is called "background". The background property can be set on classes, ids or directly on the HTML element.

```
.background, #background, body{  
background: rgb(197, 149, 141) }
```

If only the background color should be changed can be used:

```
.background{ background-color: rgb(197,  
149, 141) }
```

This example shows the color as background, it is applied via the CSS property "background".

To optimize and compress your CSS code, you can use our [online CSS compressor and optimizer](#) based on csstidy. If you want to create a linear or radial gradient as background or border, check our [CSS Gradient Generator](#).

Hey! You found this booklet interesting? Support Converting Colors with the new Membership Option!

The pro membership hides all ads, plus gives you double the colors in the color bucket, and more awesome pro features!

[Learn more, Memberships starting at \\$2.50/m!](#)

**Follow me
on Twitter!**

@ConvertingColor