

Converting Colors

RGB(197, 159, 159)

Have a look what the booklet for
RGB(197, 159, 159) contains.

RGB(197, 159, 159)	3
<i>Conversions</i>	4
<i>Details</i>	6
<i>Harmonies</i>	11
<i>Previews</i>	23
<i>Color Blindness Simulation</i>	26
<i>CSS Examples</i>	29

Color

RGB(197, 159, 159)

Conversions

Conversions Part 1

Format	Color
Hex	C59F9F
RGB	197, 159, 159
RGB Percent	77%, 62%, 62%
CMY	0.2275, 0.3765, 0.3765
CMYK	0.00, 0.19, 0.19, 0.23
HSL	0°, 25%, 70%
HSV	0°, 19%, 77%
XYZ	41.6821, 39.1698, 38.1645
YIQ	170.3620, 22.6480, 8.0560

Conversions

Conversions Part 2

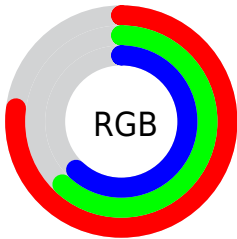
Format	Color
RYB	197, 159, 159
Decimal	12951455
CIELab	68.87, 14.04, 5.32
CIElCh	69, 15.013, 20.756
Yxy	39.1698, 0.3502, 0.3291
Android (android.graphics.Color)	4291141535 (0xFFC59F9F)
YUV	170.3620, -5.6015, 23.3615
Hunter-Lab	62.5858, 9.3558, 7.6553

Details

The RGB color **197, 159, 159** is a light color, and the websafe version is hex **CC9999**. A complement of this color would be **159, 197, 197**, and the grayscale version is **170, 170, 170**.

A 20% lighter version of the original color is **254, 214, 214**, and **143, 107, 108** is the 20% darker color. If you saturate the color by 10%, you get **197, 139, 139**, and if you desaturate by 10%, it is **197, 179, 179**.

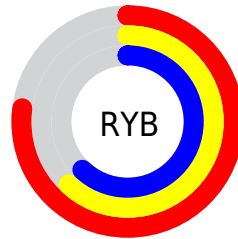
Distribution



Red (77%)

Green (62%)

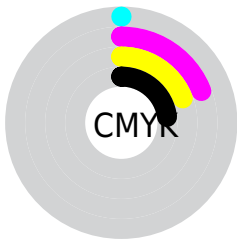
Blue (62%)



Red (77%)

Yellow (62%)

Blue (62%)

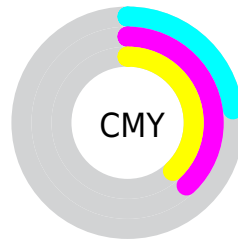


Cyan (0%)

Magenta (19%)

Yellow (19%)

Black (23%)



Cyan (23%)

Magenta (38%)

Yellow (38%)

Brightness & Saturation Gradients

These gradients show how the RGB color 197, 159, 159 changes by changing the brightness by 10 percent. The first figure shows a shift by +10% for each color and the second figure -10%.

Similar to the brightness gradients but the following saturation gradients show a change of the RGB color 197, 159, 159 by changing the saturation by 10% instead.

 197, 159, 159

255, 255, 255

 254, 214, 214


 255, 242, 242

 197, 159, 159

 169, 133, 133

 143, 107, 108

 117, 83, 83


 91, 60, 60

 67, 38, 39

 44, 17, 18

 21, 0, 0


 0, 0, 0

 197, 159, 159

 197, 159, 159

 197, 139, 139

 197, 179, 179

 197, 120, 120

 197, 198, 198

 197, 100, 100

 197, 218, 218

 197, 80, 80

 197, 238, 238

 197, 61, 61

 197, 255, 255

 197, 41, 41

 197, 21, 21

 197, 1, 1

 197, 0, 0

Harmonies

Analogous

The Analogous color harmony consists of three colors that are next to each other on the color wheel.



193, 159, 173



197, 159, 159



193, 162, 148

Triad

The Triadic color harmony groups three colors that are evenly spaced from another and form a triangle on the color wheel.



197, 159, 159



153, 174, 151



148, 171, 194

Complementary

The Complementary color scheme is a pair of colors which are on the opposite of each other on the color wheel.



197, 159, 159



159, 197, 197

Split Complementary

Split-complementary colors differ from the complementary color scheme. The scheme consists of three colors, the original color and two neighbors of the complement color.



136, 174, 189



197, 159, 159



140, 176, 163

Square

The Square scheme is like the rectangle color scheme, but the four colors are evenly spaced on the color wheel.



197, 159, 159



169, 170, 143



133, 176, 177



165, 166, 193

Rectangle

The Rectangle color scheme consists of four colors that form a rectangle on the color wheel.



197, 159, 159



187, 164, 143



133, 176, 177



143, 172, 193

Sweetspot

The Sweet Spot groups the original color and five complimentary colors.



197, 159, 159



255, 240, 240



197, 159, 197



128, 119, 119



0, 0, 0



128, 128, 128

Same Dimension

The Same Dimension uses a secret algorithm to generate beautiful new colors.



197, 159, 159



255, 196, 196



197, 178, 159



99, 90, 90



163, 0, 0



36, 0, 0

Inverse Universe

The Inverse Universe completely reimagines the original color for something new.



159, 197, 197



196, 255, 255



159, 178, 197



90, 99, 99



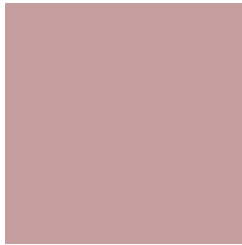
0, 163, 163



0, 36, 36

Previews

White Background



This preview shows how the RGB color 197, 159, 159 looks on a white background.

Color Contrast Check

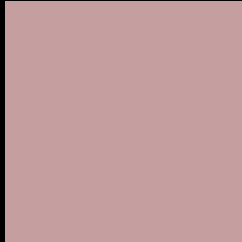
Large Text (above 18pt) WCAG AA × Fail

Any Text WCAG AA × Fail

Large Text (above 18pt) WCAG AAA × Fail

Any Text WCAG AAA × Fail

Black Background



This preview shows how the RGB color 197, 159, 159 looks on a black background.

Color Contrast Check

Large Text (above 18pt) WCAG AA ✓ Pass

Any Text WCAG AA ✓ Pass

Large Text (above 18pt) WCAG AAA ✓ Pass

Any Text WCAG AAA ✓ Pass

If you want to check with other color combinations, try the [Color Contrast Checker](#).

RGB 197, 159, 159 Background



This preview shows how black text looks on a background with the RGB color 197, 159, 159.



This preview shows how white text looks on a background with the RGB color 197, 159, 159.

Color Blindness Simulation

Color vision deficiency is a very complex topic, and I could not describe the different causes any better than Wikipedia does, so if you want to learn more, you should check out their [article about color blindness](#).

Dichromacy



Original Color
197, 159, 159

Protanopia
172, 168, 164

Deuteranopia
188, 162, 158



Tritanopia
198, 157, 170

Trichromacy



Original Color

197, 159, 159

Protanomaly

181, 165, 162

Deuteranomaly

191, 161, 158

Tritanomaly

198, 158, 166

Monochromacy



Original Color

197, 159, 159

Achromatopsia

170, 170, 170

Achromatomaly

180, 166, 166

CSS Examples

Text

The CSS property to change the color of the text to RGB 197, 159, 159 is called "color". The color property can be set on classes, ids or directly on the HTML element.

This example shows how text in the color `rgb(197, 159, 159)` looks like.

```
.text, #text, p{  
    color:rgb(197, 159, 159)  
}
```

If you want to add a text shadow in that color use the text-shadow property, you can generate a text shadow directly with our [CSS Text Shadow Generator](#).

Here you see how black text with a 4 pixel rgb(197, 159, 159) colored shadow looks like.

```
.shadow{ text-shadow: 4px 4px 2px rgb(197, 159, 159) }
```

Border

The CSS property to change the border of an element to RGB 197, 159, 159 is called "border". The border property can be set on classes, ids or directly on the HTML element.

This example shows the color as border, it can be applied via the CSS property "border" or "border-color".

```
.border, #border, table{ border:4px solid rgb(197, 159, 159) }
```

If only the border color should be changed use the property `border-color`.

```
.border{ border-color:rgb(197, 159, 159) }
```

If you want to add a box shadow in that color use:

Here you see how a box with a 4 pixel `rgb(197, 159, 159)` colored shadow looks like.

```
.boxshadow{ -moz-box-shadow:4px 4px 4px  
4px rgb(197, 159, 159); -webkit-box-  
shadow:4px 4px 4px 4px rgb(197, 159, 159);  
box-shadow:4px 4px 4px 4px rgb(197, 159,  
159) }
```

Background

The CSS property to change the background color of an element to RGB 197, 159, 159 is called "background". The background property can be set on classes, ids or directly on the HTML element.

```
.background, #background, body{  
background: rgb(197, 159, 159) }
```

If only the background color should be changed can be used:

```
.background{ background-color: rgb(197,  
159, 159) }
```

This example shows the color as background, it is applied via the CSS property "background".

To optimize and compress your CSS code, you can use our [online CSS compressor and optimizer](#) based on csstidy. If you want to create a linear or radial gradient as background or border, check our [CSS Gradient Generator](#).

Hey! You found this booklet interesting? Support Converting Colors with the new Membership Option!

The pro membership hides all ads, plus gives you double the colors in the color bucket, and more awesome pro features!

[Learn more, Memberships starting at \\$2.50/m!](#)

**Follow me
on Twitter!**

@ConvertingColor