

Converting Colors

RGB(197, 169, 160)

Have a look what the booklet for
RGB(197, 169, 160) contains.

RGB(197, 169, 160)	3
<i>Conversions</i>	4
<i>Details</i>	6
<i>Harmonies</i>	11
<i>Previews</i>	23
<i>Color Blindness Simulation</i>	26
<i>CSS Examples</i>	29

Color

RGB(197, 169, 160)

Conversions

Conversions Part 1

Format	Color
Hex	C5A9A0
RGB	197, 169, 160
RGB Percent	77%, 66%, 63%
CMY	0.2275, 0.3373, 0.3725
CMYK	0.00, 0.14, 0.19, 0.23
HSL	15°, 24%, 70%
HSV	15°, 19%, 77%
XYZ	43.5591, 42.7843, 39.2201
YIQ	176.3460, 19.5770, 3.1370

Conversions

Conversions Part 2

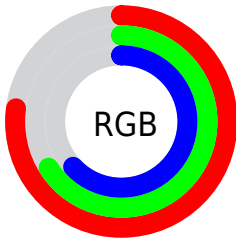
Format	Color
RYB	197, 172, 160
Decimal	12954016
CIELab	71.41, 8.73, 8.40
CIElCh	71, 12.118, 43.891
Yxy	42.7843, 0.3469, 0.3407
Android (android.graphics.Color)	4291144096 (0xFFC5A9A0)
YUV	176.3460, -8.0586, 18.1136
Hunter-Lab	65.4097, 4.4037, 10.2361

Details

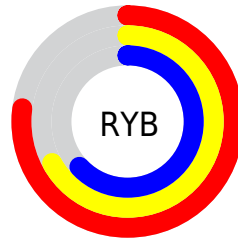
The RGB color **197, 169, 160** is a light color, and the websafe version is hex **CC9999**. A complement of this color would be **160, 188, 197**, and the grayscale version is **176, 176, 176**.

A 20% lighter version of the original color is **254, 224, 215**, and **143, 117, 109** is the 20% darker color. If you saturate the color by 10%, you get **197, 154, 140**, and if you desaturate by 10%, it is **197, 184, 180**.

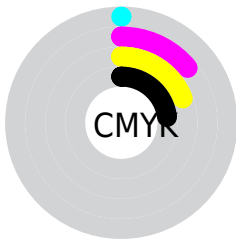
Distribution



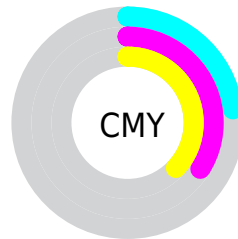
- Red (77%)
- Green (66%)
- Blue (63%)



- Red (77%)
- Yellow (67%)
- Blue (63%)



- Cyan (0%)
- Magenta (14%)
- Yellow (19%)
- Black (23%)




- Cyan (23%)
- Magenta (34%)
- Yellow (37%)

Brightness & Saturation Gradients

These gradients show how the RGB color 197, 169, 160 changes by changing the brightness by 10 percent. The first figure shows a shift by +10% for each color and the second figure -10%.

Similar to the brightness gradients but the following saturation gradients show a change of the RGB color 197, 169, 160 by changing the saturation by 10% instead.

 197, 169, 160


255, 255, 255

 254, 224, 215

 255, 253, 243

 197, 169, 160

 170, 143, 134

 143, 117, 109

 117, 92, 84

 92, 69, 61

 68, 46, 39

 45, 26, 19

 24, 0, 0

 0, 0, 0

 197, 169, 160

 197, 169, 160

■ 197, 154, 140

■ 197, 184, 180

■ 197, 139, 121

■ 197, 199, 199

■ 197, 124, 101

■ 197, 214, 219

■ 197, 109, 81

■ 197, 229, 239

■ 197, 94, 62

■ 197, 244, 255

■ 197, 80, 42

■ 197, 255, 255

■ 197, 65, 22

■ 197, 50, 2

■ 197, 48, 0

Harmonies

Analogous

The Analogous color harmony consists of three colors that are next to each other on the color wheel.



199, 167, 170



197, 169, 160



190, 172, 154

Triad

The Triadic color harmony groups three colors that are evenly spaced from another and form a triangle on the color wheel.



197, 169, 160



154, 181, 168



170, 174, 196

Complementary

The Complementary color scheme is a pair of colors which are on the opposite of each other on the color wheel.



197, 169, 160



160, 188, 197

Split Complementary

Split-complementary colors differ from the complementary color scheme. The scheme consists of three colors, the original color and two neighbors of the complement color.



156, 178, 196



197, 169, 160



148, 181, 180

Square

The Square scheme is like the rectangle color scheme, but the four colors are evenly spaced on the color wheel.



197, 169, 160



166, 179, 159



148, 180, 190



183, 170, 191

Rectangle

The Rectangle color scheme consists of four colors that form a rectangle on the color wheel.



197, 169, 160



183, 175, 153



148, 180, 190



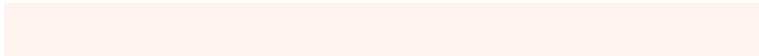
165, 175, 197

Sweetspot

The Sweet Spot groups the original color and five complimentary colors.



197, 169, 160



255, 243, 240



197, 160, 188



128, 121, 119



0, 0, 0



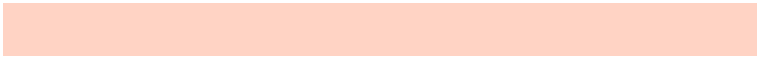
128, 128, 128

Same Dimension

The Same Dimension uses a secret algorithm to generate beautiful new colors.



197, 169, 160



255, 211, 196



197, 187, 160



99, 92, 90



163, 40, 0



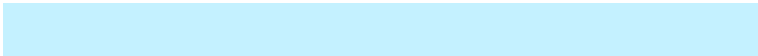
36, 9, 0

Inverse Universe

The Inverse Universe completely reimagines the original color for something new.



160, 188, 197



196, 241, 255



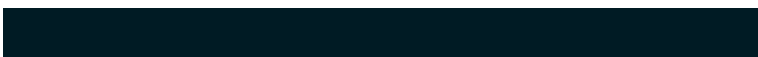
160, 170, 197



90, 97, 99



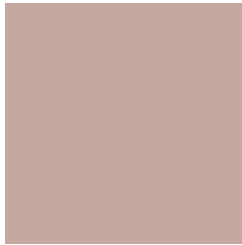
0, 124, 163



0, 27, 36

Previews

White Background



This preview shows how the RGB color 197, 169, 160 looks on a white background.

Color Contrast Check

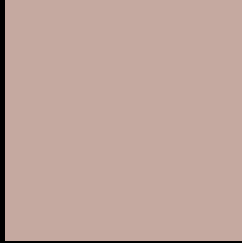
Large Text (above 18pt) WCAG AA × Fail

Any Text WCAG AA × Fail

Large Text (above 18pt) WCAG AAA × Fail

Any Text WCAG AAA × Fail

Black Background



This preview shows how the RGB color 197, 169, 160 looks on a black background.

Color Contrast Check

Large Text (above 18pt) WCAG AA ✓ Pass

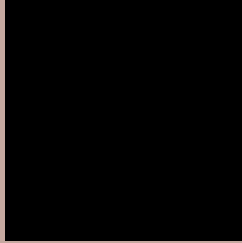
Any Text WCAG AA ✓ Pass

Large Text (above 18pt) WCAG AAA ✓ Pass

Any Text WCAG AAA ✓ Pass

If you want to check with other color combinations, try the [Color Contrast Checker](#).

RGB 197, 169, 160 Background



This preview shows how black text looks on a background with the RGB color 197, 169, 160.






This preview shows how white text looks on a background with the RGB color 197, 169, 160.

Color Blindness Simulation

Color vision deficiency is a very complex topic, and I could not describe the different causes any better than Wikipedia does, so if you want to learn more, you should check out their [article about color blindness](#).

Dichromacy

	Original Color 197, 169, 160
	Protanopia 181, 174, 163
	Deuteranopia 197, 169, 160



Tritanopia
199, 166, 179

Trichromacy



Original Color
197, 169, 160

Protanomaly
187, 172, 162

Deuteranomaly
197, 169, 160

Tritanomaly
198, 167, 172

Monochromacy



Original Color
197, 169, 160

Achromatopsia
176, 176, 176

Achromatomaly
184, 173, 170

CSS Examples

Text

The CSS property to change the color of the text to RGB 197, 169, 160 is called "color". The color property can be set on classes, ids or directly on the HTML element.

This example shows how text in the color `rgb(197, 169, 160)` looks like.

```
.text, #text, p{  
    color:rgb(197, 169, 160)  
}
```

If you want to add a text shadow in that color use the text-shadow property, you can generate a text shadow directly with our [CSS Text Shadow Generator](#).

Here you see how black text with a 4 pixel rgb(197, 169, 160) colored shadow looks like.

```
.shadow{ text-shadow: 4px 4px 2px rgb(197, 169, 160) }
```

Border

The CSS property to change the border of an element to RGB 197, 169, 160 is called "border". The border property can be set on classes, ids or directly on the HTML element.

This example shows the color as border, it can be applied via the CSS property "border" or "border-color".

```
.border, #border, table{ border:4px solid rgb(197, 169, 160) }
```

If only the border color should be changed use the property `border-color`.

```
.border{ border-color:rgb(197, 169, 160) }
```

If you want to add a box shadow in that color use:

Here you see how a box with a 4 pixel `rgb(197, 169, 160)` colored shadow looks like.

```
.boxshadow{ -moz-box-shadow:4px 4px 4px  
4px rgb(197, 169, 160); -webkit-box-  
shadow:4px 4px 4px 4px rgb(197, 169, 160);  
box-shadow:4px 4px 4px 4px rgb(197, 169,  
160) }
```

Background

The CSS property to change the background color of an element to RGB 197, 169, 160 is called "background". The background property can be set on classes, ids or directly on the HTML element.

```
.background, #background, body{  
background: rgb(197, 169, 160) }
```

If only the background color should be changed can be used:

```
.background{ background-color: rgb(197,  
169, 160) }
```

This example shows the color as background, it is applied via the CSS property "background".

To optimize and compress your CSS code, you can use our [online CSS compressor and optimizer](#) based on csstidy. If you want to create a linear or radial gradient as background or border, check our [CSS Gradient Generator](#).

Hey! You found this booklet interesting? Support Converting Colors with the new Membership Option!

The pro membership hides all ads, plus gives you double the colors in the color bucket, and more awesome pro features!

[Learn more, Memberships starting at \\$2.50/m!](#)

**Follow me
on Twitter!**

@ConvertingColor