

# Converting Colors

RGB(199, 148, 140)

Have a look what the booklet for  
RGB(199, 148, 140) contains.

<b>RGB(199, 148, 140)</b> .....	3
<i><b>Conversions</b></i> .....	4
<i><b>Details</b></i> .....	6
<i><b>Harmonies</b></i> .....	11
<i><b>Previews</b></i> .....	23
<i><b>Color Blindness Simulation</b></i> .....	26
<i><b>CSS Examples</b></i> .....	29

# **Color**

**RGB(199, 148, 140)**

# Conversions

## Conversions Part 1

Format	Color
Hex	C7948C
RGB	199, 148, 140
RGB Percent	78%, 58%, 55%
CMY	0.2196, 0.4196, 0.4510
CMYK	0.00, 0.26, 0.30, 0.22
HSL	8°, 35%, 66%
HSV	8°, 30%, 78%
XYZ	38.8767, 35.2154, 29.5592
YIQ	162.3370, 32.9640, 8.3240

# Conversions

## Conversions Part 2

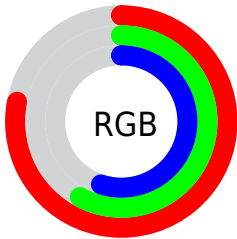
Format	Color
R <sub>Y</sub> B	199, 149, 140
Decimal	13079692
CIE Lab	65.92, 18.07, 11.73
CIE LCh	66, 21.543, 33.000
Yxy	35.2154, 0.3751, 0.3397
Android (android.graphics.Color)	4291269772 (0xFFC7948C)
YUV	162.3370, -11.0121, 32.1535
Hunter-Lab	59.3425, 13.0902, 12.0068

# Details

The RGB color **199, 148, 140** is a light color, and the websafe version is hex **CC9999**. A complement of this color would be **140, 191, 199**, and the grayscale version is **162, 162, 162**.

A 20% lighter version of the original color is **255, 202, 194**, and **144, 97, 90** is the 20% darker color. If you saturate the color by 10%, you get **199, 131, 120**, and if you desaturate by 10%, it is **199, 165, 160**.

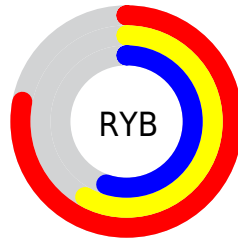
# Distribution



Red (78%)

Green (58%)

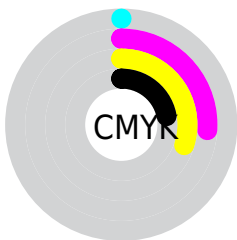
Blue (55%)



Red (78%)

Yellow (58%)

Blue (55%)

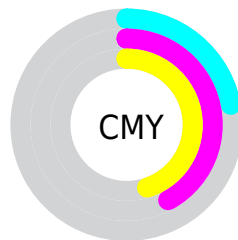


Cyan (0%)

Magenta (26%)

Yellow (30%)

Black (22%)



Cyan (22%)

Magenta (42%)

Yellow (45%)

# Brightness & Saturation Gradients

These gradients show how the RGB color 199, 148, 140 changes by changing the brightness by 10 percent. The first figure shows a shift by +10% for each color and the second figure -10%.

Similar to the brightness gradients but the following saturation gradients show a change of the RGB color 199, 148, 140 by changing the saturation by 10% instead.



 199, 148, 140


255, 255, 255

 255, 202, 194

 255, 230, 221

 255, 255, 250

 199, 148, 140

 171, 122, 115

 144, 97, 90

 117, 73, 67

 92, 50, 44

 67, 28, 24

 44, 6, 0

 1, 0, 0


 0, 0, 0

 199, 148, 140

 199, 148, 140

 199, 131, 120

 199, 165, 160

 199, 114, 100

 199, 182, 180

 199, 96, 80

 199, 200, 200

 199, 79, 60

 199, 217, 220

 199, 62, 41

 199, 234, 240

 199, 45, 21

 199, 251, 255

 199, 28, 1

 199, 255, 255

 199, 27, 0

# Harmonies

## Analogous

The Analogous color harmony consists of three colors that are next to each other on the color wheel.



198, 146, 159



199, 148, 140



190, 153, 126

# Triad

The Triadic color harmony groups three colors that are evenly spaced from another and form a triangle on the color wheel.



199, 148, 140



130, 169, 142



140, 161, 198

# Complementary

The Complementary color scheme is a pair of colors which are on the opposite of each other on the color wheel.



199, 148, 140



140, 191, 199

# Split Complementary

Split-complementary colors differ from the complementary color scheme. The scheme consists of three colors, the original color and two neighbors of the complement color.



116, 167, 194



199, 148, 140



112, 171, 161

# Square

The Square scheme is like the rectangle color scheme, but the four colors are evenly spaced on the color wheel.



199, 148, 140



152, 165, 127



105, 170, 180



166, 155, 193

# Rectangle

The Rectangle color scheme consists of four colors that form a rectangle on the color wheel.



199, 148, 140



179, 157, 122



105, 170, 180



131, 163, 198

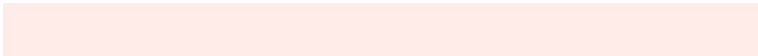


# Sweetspot

The Sweet Spot groups the original color and five complimentary colors.



199, 148, 140



255, 235, 232



199, 140, 191



128, 115, 113



0, 0, 0



128, 128, 128



# Same Dimension

The Same Dimension uses a secret algorithm to generate beautiful new colors.



199, 148, 140



255, 176, 163



199, 177, 140



99, 91, 90



163, 22, 0



36, 5, 0

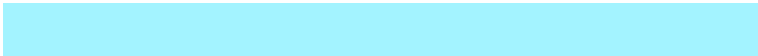


# Inverse Universe

The Inverse Universe completely reimagines the original color for something new.



140, 191, 199



163, 243, 255



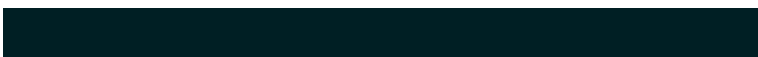
140, 162, 199



90, 98, 99



0, 141, 163



0, 31, 36



# Previews

## White Background



This preview shows how the RGB color 199, 148, 140 looks on a white background.

## Color Contrast Check

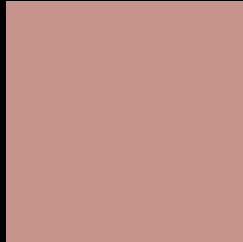
Large Text (above 18pt) WCAG AA × Fail

Any Text WCAG AA × Fail

Large Text (above 18pt) WCAG AAA × Fail

Any Text WCAG AAA × Fail

# Black Background



This preview shows how the RGB color 199, 148, 140 looks on a black background.

## Color Contrast Check

Large Text (above 18pt) WCAG AA ✓ Pass

Any Text WCAG AA ✓ Pass

Large Text (above 18pt) WCAG AAA ✓ Pass

Any Text WCAG AAA ✓ Pass

If you want to check with other color combinations, try the [Color Contrast Checker](#).



## RGB 199, 148, 140 Background



This preview shows how black text looks on a background with the RGB color 199, 148, 140.



This preview shows how white text looks on a background with the RGB color 199, 148, 140.

# Color Blindness Simulation

Color vision deficiency is a very complex topic, and I could not describe the different causes any better than Wikipedia does, so if you want to learn more, you should check out their [article about color blindness](#).

## Dichromacy



**Original Color**  
199, 148, 140

**Protanopia**  
167, 160, 146

**Deuteranopia**  
184, 154, 139



**Tritanopia**  
201, 145, 157

# Trichromacy



**Original Color**

199, 148, 140

**Protanomaly**

179, 156, 144

**Deuteranomaly**

189, 152, 139

**Tritanomaly**

200, 146, 151

# Monochromacy



**Original Color**

199, 148, 140

**Achromatopsia**

162, 162, 162

**Achromatomaly**

175, 157, 154

# CSS Examples

## Text

The CSS property to change the color of the text to RGB 199, 148, 140 is called "color". The color property can be set on classes, ids or directly on the HTML element.

This example shows how text in the color `rgb(199, 148, 140)` looks like.

```
.text, #text, p{  
    color:rgb(199, 148, 140)  
}
```

If you want to add a text shadow in that color use the text-shadow property, you can generate a text shadow directly with our [CSS Text Shadow Generator](#).

Here you see how black text with a 4 pixel rgb(199, 148, 140) colored shadow looks like.

```
.shadow{ text-shadow: 4px 4px 2px rgb(199, 148, 140) }
```

## Border

The CSS property to change the border of an element to RGB 199, 148, 140 is called "border". The border property can be set on classes, ids or directly on the HTML element.

This example shows the color as border, it can be applied via the CSS property "border" or "border-color".

```
.border, #border, table{ border:4px solid rgb(199, 148, 140) }
```

If only the border color should be changed use the property `border-color`.

```
.border{ border-color:rgb(199, 148, 140) }
```

If you want to add a box shadow in that color use:

Here you see how a box with a 4 pixel `rgb(199, 148, 140)` colored shadow looks like.

```
.boxshadow{ -moz-box-shadow:4px 4px 4px  
4px rgb(199, 148, 140); -webkit-box-  
shadow:4px 4px 4px 4px rgb(199, 148, 140);  
box-shadow:4px 4px 4px 4px rgb(199, 148,  
140) }
```

# Background

The CSS property to change the background color of an element to RGB 199, 148, 140 is called "background". The background property can be set on classes, ids or directly on the HTML element.

```
.background, #background, body{  
background: rgb(199, 148, 140) }
```

If only the background color should be changed can be used:

```
.background{ background-color: rgb(199,  
148, 140) }
```

This example shows the color as background, it is applied via the CSS property "background".

To optimize and compress your CSS code, you can use our [online CSS compressor and optimizer](#) based on csstidy. If you want to create a linear or radial gradient as background or border, check our [CSS Gradient Generator](#).



Hey! You found this booklet interesting? Support Converting Colors with the new Membership Option!

The pro membership hides all ads, plus gives you double the colors in the color bucket, and more awesome pro features!

**[Learn more, Memberships starting at \\$2.50/m!](#)**

**Follow me  
on Twitter!**

@ConvertingColor