

Converting Colors

RGB(199, 175, 170)

Have a look what the booklet for
RGB(199, 175, 170) contains.

RGB(199, 175, 170)	3
<i>Conversions</i>	4
<i>Details</i>	6
<i>Harmonies</i>	11
<i>Previews</i>	23
<i>Color Blindness Simulation</i>	26
<i>CSS Examples</i>	29

Color

RGB(199, 175, 170)

Conversions

Conversions Part 1

Format	Color
Hex	C7AFAA
RGB	199, 175, 170
RGB Percent	78%, 69%, 67%
CMY	0.2196, 0.3137, 0.3333
CMYK	0.00, 0.12, 0.15, 0.22
HSL	10°, 21%, 72%
HSV	10°, 15%, 78%
XYZ	46.1389, 45.7043, 44.4202
YIQ	181.6060, 15.9090, 3.5330

Conversions

Conversions Part 2

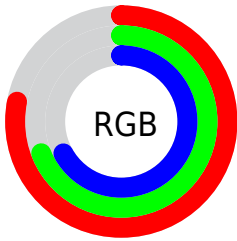
Format	Color
RYB	199, 176, 170
Decimal	13086634
CIELab	73.35, 7.81, 5.72
CIELCh	73, 9.687, 36.225
Yxy	45.7043, 0.3386, 0.3354
Android (android.graphics.Color)	4291276714 (0xFFC7AFAA)
YUV	181.6060, -5.7218, 15.2545
Hunter-Lab	67.6050, 3.5135, 8.3666

Details

The RGB color **199, 175, 170** is a light color, and the websafe version is hex **CC9999**. A complement of this color would be **170, 194, 199**, and the grayscale version is **182, 182, 182**.

A 20% lighter version of the original color is **255, 231, 225**, and **145, 123, 118** is the 20% darker color. If you saturate the color by 10%, you get **199, 159, 150**, and if you desaturate by 10%, it is **199, 191, 190**.

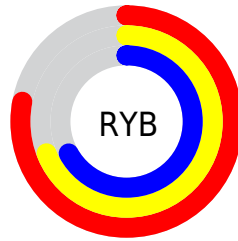
Distribution



Red (78%)

Green (69%)

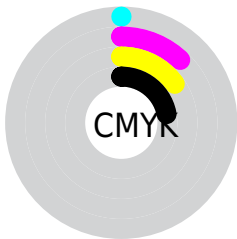
Blue (67%)



Red (78%)

Yellow (69%)

Blue (67%)

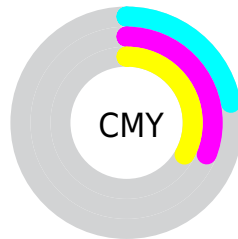


Cyan (0%)

Magenta (12%)

Yellow (15%)

Black (22%)



Cyan (22%)

Magenta (31%)

Yellow (33%)

Brightness & Saturation Gradients

These gradients show how the RGB color 199, 175, 170 changes by changing the brightness by 10 percent. The first figure shows a shift by +10% for each color and the second figure -10%.

Similar to the brightness gradients but the following saturation gradients show a change of the RGB color 199, 175, 170 by changing the saturation by 10% instead.


 199, 175, 170

255, 255, 255

 255, 231, 225

255, 255, 254

 199, 175, 170

 172, 148, 144

 145, 123, 118

 119, 98, 93

 94, 74, 70

 70, 51, 47

 47, 30, 27

 28, 6, 0

 0, 0, 0

 199, 175, 170

 199, 175, 170

199, 159, 150

199, 191, 190

199, 142, 130

199, 208, 210

199, 126, 110

199, 224, 230

199, 109, 90

199, 241, 250

199, 93, 70

199, 255, 255

199, 76, 51

199, 60, 31

199, 43, 11

199, 34, 0

Harmonies

Analogous

The Analogous color harmony consists of three colors that are next to each other on the color wheel.



199, 174, 179



199, 175, 170



194, 177, 164

Triad

The Triadic color harmony groups three colors that are evenly spaced from another and form a triangle on the color wheel.



199, 175, 170



166, 185, 173



173, 180, 198

Complementary

The Complementary color scheme is a pair of colors which are on the opposite of each other on the color wheel.



199, 175, 170



170, 194, 199

Split Complementary

Split-complementary colors differ from the complementary color scheme. The scheme consists of three colors, the original color and two neighbors of the complement color.



164, 183, 196



199, 175, 170



159, 186, 182

Square

The Square scheme is like the rectangle color scheme, but the four colors are evenly spaced on the color wheel.



199, 175, 170



175, 183, 166



159, 185, 190



184, 177, 194

Rectangle

The Rectangle color scheme consists of four colors that form a rectangle on the color wheel.



199, 175, 170



189, 179, 163



159, 185, 190



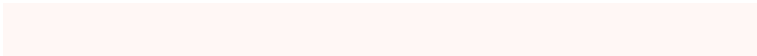
170, 181, 198

Sweetspot

The Sweet Spot groups the original color and five complimentary colors.



199, 175, 170



255, 247, 245



199, 170, 194



128, 122, 121



0, 0, 0



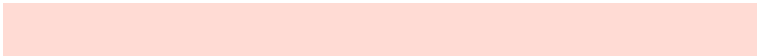
128, 128, 128

Same Dimension

The Same Dimension uses a secret algorithm to generate beautiful new colors.



199, 175, 170



255, 219, 212



199, 189, 170



99, 91, 90



163, 28, 0



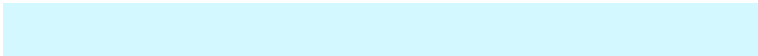
36, 6, 0

Inverse Universe

The Inverse Universe completely reimagines the original color for something new.



170, 194, 199



212, 248, 255



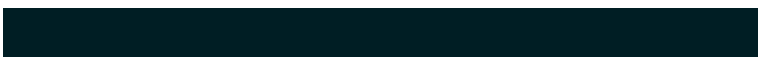
170, 180, 199



90, 98, 99



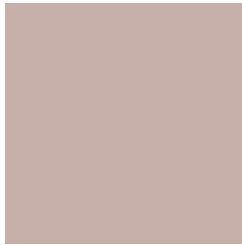
0, 135, 163



0, 30, 36

Previews

White Background



This preview shows how the RGB color 199, 175, 170 looks on a white background.

Color Contrast Check

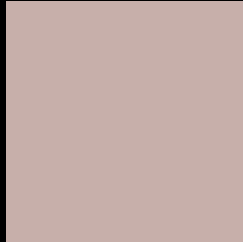
Large Text (above 18pt) WCAG AA × Fail

Any Text WCAG AA × Fail

Large Text (above 18pt) WCAG AAA × Fail

Any Text WCAG AAA × Fail

Black Background



This preview shows how the RGB color 199, 175, 170 looks on a black background.

Color Contrast Check

Large Text (above 18pt) WCAG AA ✓ Pass

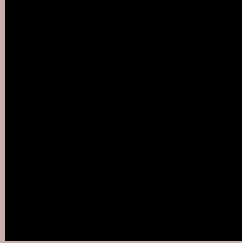
Any Text WCAG AA ✓ Pass

Large Text (above 18pt) WCAG AAA ✓ Pass

Any Text WCAG AAA ✓ Pass

If you want to check with other color combinations, try the [Color Contrast Checker](#).

RGB 199, 175, 170 Background



This preview shows how black text looks on a background with the RGB color 199, 175, 170.



This preview shows how white text looks on a background with the RGB color 199, 175, 170.

Color Blindness Simulation

Color vision deficiency is a very complex topic, and I could not describe the different causes any better than Wikipedia does, so if you want to learn more, you should check out their [article about color blindness](#).


Dichromacy



Original Color
199, 175, 170

Protanopia
185, 180, 172

Deuteranopia
201, 174, 170



Tritanopia
201, 173, 186

Trichromacy



Original Color
199, 175, 170

Protanomaly
190, 178, 171

Deuteranomaly
200, 174, 170

Tritanomaly
200, 174, 180

Monochromacy



Original Color
199, 175, 170

Achromatopsia
182, 182, 182

Achromatomaly
188, 179, 178

CSS Examples

Text

The CSS property to change the color of the text to RGB 199, 175, 170 is called "color". The color property can be set on classes, ids or directly on the HTML element.

This example shows how text in the color `rgb(199, 175, 170)` looks like.

```
.text, #text, p{  
    color:rgb(199, 175, 170)  
}
```

If you want to add a text shadow in that color use the text-shadow property, you can generate a text shadow directly with our [CSS Text Shadow Generator](#).

Here you see how black text with a 4 pixel rgb(199, 175, 170) colored shadow looks like.

```
.shadow{ text-shadow: 4px 4px 2px rgb(199, 175, 170) }
```

Border

The CSS property to change the border of an element to RGB 199, 175, 170 is called "border". The border property can be set on classes, ids or directly on the HTML element.

This example shows the color as border, it can be applied via the CSS property "border" or "border-color".

```
.border, #border, table{ border:4px solid rgb(199, 175, 170) }
```

If only the border color should be changed use the property `border-color`.

```
.border{ border-color:rgb(199, 175, 170) }
```

If you want to add a box shadow in that color use:

Here you see how a box with a 4 pixel `rgb(199, 175, 170)` colored shadow looks like.

```
.boxshadow{ -moz-box-shadow:4px 4px 4px  
4px rgb(199, 175, 170); -webkit-box-  
shadow:4px 4px 4px 4px rgb(199, 175, 170);  
box-shadow:4px 4px 4px 4px rgb(199, 175,  
170) }
```

Background

The CSS property to change the background color of an element to RGB 199, 175, 170 is called "background". The background property can be set on classes, ids or directly on the HTML element.

```
.background, #background, body{  
background: rgb(199, 175, 170) }
```

If only the background color should be changed can be used:

```
.background{ background-color: rgb(199,  
175, 170) }
```

This example shows the color as background, it is applied via the CSS property "background".

To optimize and compress your CSS code, you can use our [online CSS compressor and optimizer](#) based on csstidy. If you want to create a linear or radial gradient as background or border, check our [CSS Gradient Generator](#).

Hey! You found this booklet interesting? Support Converting Colors with the new Membership Option!

The pro membership hides all ads, plus gives you double the colors in the color bucket, and more awesome pro features!

[Learn more, Memberships starting at \\$2.50/m!](#)

**Follow me
on Twitter!**

@ConvertingColor