

Converting Colors

RGB(201, 168, 159)

Have a look what the booklet for
RGB(201, 168, 159) contains.

RGB(201, 168, 159)	3
<i>Conversions</i>	4
<i>Details</i>	6
<i>Harmonies</i>	11
<i>Previews</i>	23
<i>Color Blindness Simulation</i>	26
<i>CSS Examples</i>	29

Color

RGB(201, 168, 159)

Conversions

Conversions Part 1

Format	Color
Hex	C9A89F
RGB	201, 168, 159
RGB Percent	79%, 66%, 62%
CMY	0.2118, 0.3412, 0.3765
CMYK	0.00, 0.16, 0.21, 0.21
HSL	13°, 28%, 71%
HSV	13°, 21%, 79%
XYZ	44.3480, 42.9260, 38.7490
YIQ	176.8410, 22.5570, 4.1970

Conversions

Conversions Part 2

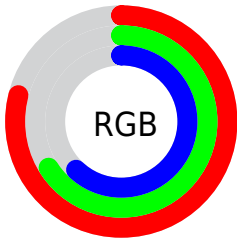
Format	Color
R_{YB}	201, 170, 159
Decimal	13215903
CIE _{Lab}	71.50, 10.63, 9.14
CIE _{LCh}	72, 14.020, 40.685
Yxy	42.9260, 0.3519, 0.3406
Android (android.graphics.Color)	4291405983 (0xFFC9A89F)
YUV	176.8410, -8.7956, 21.1874
Hunter-Lab	65.5179, 6.1675, 10.7969

Details

The RGB color **201, 168, 159** is a light color, and the websafe version is hex **CC9999**. A complement of this color would be **159, 192, 201**, and the grayscale version is **177, 177, 177**.

A 20% lighter version of the original color is **255, 223, 214**, and **146, 116, 108** is the 20% darker color. If you saturate the color by 10%, you get **201, 152, 139**, and if you desaturate by 10%, it is **201, 184, 179**.

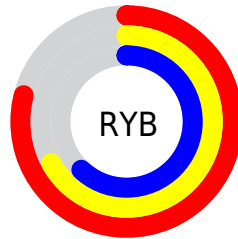
Distribution



Red (79%)

Green (66%)

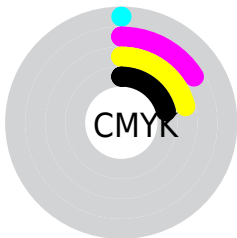
Blue (62%)



Red (79%)

Yellow (67%)

Blue (62%)

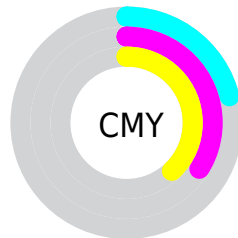


Cyan (0%)

Magenta (16%)

Yellow (21%)

Black (21%)



Cyan (21%)

Magenta (34%)

Yellow (38%)

Brightness & Saturation Gradients

These gradients show how the RGB color 201, 168, 159 changes by changing the brightness by 10 percent. The first figure shows a shift by +10% for each color and the second figure -10%.

Similar to the brightness gradients but the following saturation gradients show a change of the RGB color 201, 168, 159 by changing the saturation by 10% instead.

 201, 168, 159

 201, 168, 159

255, 255, 255

 173, 142, 133


 255, 223, 214

 146, 116, 108

 255, 252, 242

 120, 91, 83

 95, 68, 60

 71, 45, 39

 47, 25, 18

 27, 0, 0

 0, 0, 0

 201, 168, 159

 201, 168, 159

■ 201, 152, 139

■ 201, 184, 179

■ 201, 136, 119

■ 201, 200, 199

■ 201, 121, 99

■ 201, 215, 219

■ 201, 105, 79

■ 201, 231, 239

■ 201, 89, 59

■ 201, 247, 255

■ 201, 73, 38

■ 201, 255, 255

■ 201, 57, 18

■ 201, 43, 0

Harmonies

Analogous

The Analogous color harmony consists of three colors that are next to each other on the color wheel.



202, 166, 171



201, 168, 159



193, 171, 151

Triad

The Triadic color harmony groups three colors that are evenly spaced from another and form a triangle on the color wheel.



201, 168, 159



152, 182, 166



167, 175, 200

Complementary

The Complementary color scheme is a pair of colors which are on the opposite of each other on the color wheel.



201, 168, 159



159, 192, 201

Split Complementary

Split-complementary colors differ from the complementary color scheme. The scheme consists of three colors, the original color and two neighbors of the complement color.



152, 179, 199



201, 168, 159



144, 183, 179

Square

The Square scheme is like the rectangle color scheme, but the four colors are evenly spaced on the color wheel.



201, 168, 159



166, 179, 156



143, 182, 191



183, 170, 195

Rectangle

The Rectangle color scheme consists of four colors that form a rectangle on the color wheel.



201, 168, 159



185, 174, 150



143, 182, 191



162, 176, 200

Sweetspot

The Sweet Spot groups the original color and five complimentary colors.



201, 168, 159



255, 243, 240



201, 159, 193



128, 120, 119



0, 0, 0



128, 128, 128

Same Dimension

The Same Dimension uses a secret algorithm to generate beautiful new colors.



201, 168, 159



255, 205, 191



201, 188, 159



99, 92, 90



163, 35, 0



36, 8, 0

Inverse Universe

The Inverse Universe completely reimagines the original color for something new.



159, 192, 201



191, 241, 255



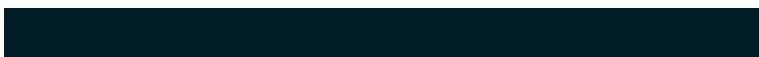
159, 172, 201



90, 97, 99



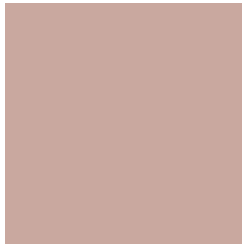
0, 128, 163



0, 28, 36

Previews

White Background



This preview shows how the RGB color 201, 168, 159 looks on a white background.

Color Contrast Check

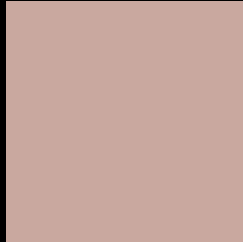
Large Text (above 18pt) WCAG AA × Fail

Any Text WCAG AA × Fail

Large Text (above 18pt) WCAG AAA × Fail

Any Text WCAG AAA × Fail

Black Background



This preview shows how the RGB color 201, 168, 159 looks on a black background.

Color Contrast Check

Large Text (above 18pt) WCAG AA ✓ Pass

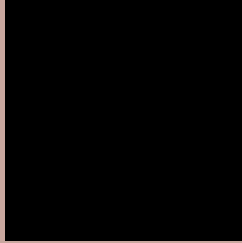
Any Text WCAG AA ✓ Pass

Large Text (above 18pt) WCAG AAA ✓ Pass

Any Text WCAG AAA ✓ Pass

If you want to check with other color combinations, try the [Color Contrast Checker](#).

RGB 201, 168, 159 Background



This preview shows how black text looks on a background with the RGB color 201, 168, 159.



This preview shows how white text looks on a background with the RGB color 201, 168, 159.

Color Blindness Simulation

Color vision deficiency is a very complex topic, and I could not describe the different causes any better than Wikipedia does, so if you want to learn more, you should check out their [article about color blindness](#).


Dichromacy



Original Color
201, 168, 159

Protanopia
181, 175, 163

Deuteranopia
198, 169, 159



Tritanopia

203, 165, 178

Trichromacy



Original Color
201, 168, 159

Protanomaly
188, 172, 162

Deuteranomaly
199, 169, 159

Tritanomaly
202, 166, 171

Monochromacy



Original Color
201, 168, 159

Achromatopsia
177, 177, 177

Achromatomaly
186, 174, 170

CSS Examples

Text

The CSS property to change the color of the text to RGB 201, 168, 159 is called "color". The color property can be set on classes, ids or directly on the HTML element.

This example shows how text in the color rgb(201, 168, 159) looks like.

```
.text, #text, p{  
    color:rgb(201, 168, 159)  
}
```

If you want to add a text shadow in that color use the text-shadow property, you can generate a text shadow directly with our [CSS Text Shadow Generator](#).

Here you see how black text with a 4 pixel rgb(201, 168, 159) colored shadow looks like.

```
.shadow{ text-shadow: 4px 4px 2px rgb(201, 168, 159) }
```

Border

The CSS property to change the border of an element to RGB 201, 168, 159 is called "border". The border property can be set on classes, ids or directly on the HTML element.

This example shows the color as border, it can be applied via the CSS property "border" or "border-color".

```
.border, #border, table{ border:4px solid rgb(201, 168, 159) }
```

If only the border color should be changed use the property `border-color`.

```
.border{ border-color:rgb(201, 168, 159) }
```

If you want to add a box shadow in that color use:

Here you see how a box with a 4 pixel `rgb(201, 168, 159)` colored shadow looks like.

```
.boxshadow{ -moz-box-shadow:4px 4px 4px  
4px rgb(201, 168, 159); -webkit-box-  
shadow:4px 4px 4px 4px rgb(201, 168, 159);  
box-shadow:4px 4px 4px 4px rgb(201, 168,  
159) }
```

Background

The CSS property to change the background color of an element to RGB 201, 168, 159 is called "background". The background property can be set on classes, ids or directly on the HTML element.

```
.background, #background, body{  
background: rgb(201, 168, 159) }
```

If only the background color should be changed can be used:

```
.background{ background-color: rgb(201,  
168, 159) }
```

This example shows the color as background, it is applied via the CSS property "background".

To optimize and compress your CSS code, you can use our [online CSS compressor and optimizer](#) based on csstidy. If you want to create a linear or radial gradient as background or border, check our [CSS Gradient Generator](#).

Hey! You found this booklet interesting? Support Converting Colors with the new Membership Option!

The pro membership hides all ads, plus gives you double the colors in the color bucket, and more awesome pro features!

[Learn more, Memberships starting at \\$2.50/m!](#)

**Follow me
on Twitter!**

@ConvertingColor