

Converting Colors

RGB(202, 148, 136)

Have a look what the booklet for
RGB(202, 148, 136) contains.

RGB(202, 148, 136)	3
<i>Conversions</i>	4
<i>Details</i>	6
<i>Harmonies</i>	11
<i>Previews</i>	23
<i>Color Blindness Simulation</i>	26
<i>CSS Examples</i>	29

Color

RGB(202, 148, 136)

Conversions

Conversions Part 1

Format	Color
Hex	CA9488
RGB	202, 148, 136
RGB Percent	79%, 58%, 53%
CMY	0.2078, 0.4196, 0.4667
CMYK	0.00, 0.27, 0.33, 0.21
HSL	11°, 38%, 66%
HSV	11°, 33%, 79%
XYZ	39.3910, 35.5139, 28.0713
YIQ	162.7780, 36.0360, 7.7160

Conversions

Conversions Part 2

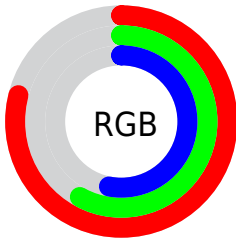
Format	Color
R _Y B	202, 151, 136
Decimal	13276296
CIE Lab	66.15, 18.70, 14.34
CIE LCh	66, 23.568, 37.483
Yxy	35.5139, 0.3825, 0.3449
Android (android.graphics.Color)	4291466376 (0xFFCA9488)
YUV	162.7780, -13.2016, 34.3977
Hunter-Lab	59.5936, 13.6986, 13.7872

Details

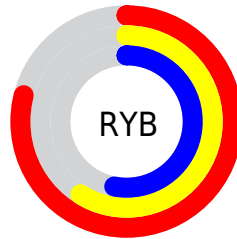
The RGB color **202, 148, 136** is a light color, and the websafe version is hex **CC9999**. A complement of this color would be **136, 190, 202**, and the grayscale version is **163, 163, 163**.

A 20% lighter version of the original color is **255, 202, 189**, and **146, 97, 86** is the 20% darker color. If you saturate the color by 10%, you get **202, 131, 116**, and if you desaturate by 10%, it is **202, 165, 156**.

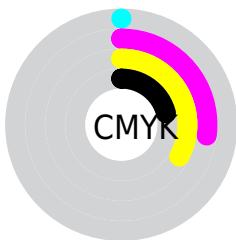
Distribution



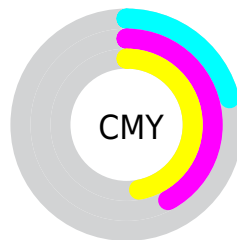
- Red (79%)
- Green (58%)
- Blue (53%)



- Red (79%)
- Yellow (59%)
- Blue (53%)



- Cyan (0%)
- Magenta (27%)
- Yellow (33%)
- Black (21%)





- Cyan (21%)
- Magenta (42%)
- Yellow (47%)

Brightness & Saturation Gradients

These gradients show how the RGB color 202, 148, 136 changes by changing the brightness by 10 percent. The first figure shows a shift by +10% for each color and the second figure -10%.

Similar to the brightness gradients but the following saturation gradients show a change of the RGB color 202, 148, 136 by changing the saturation by 10% instead.

 202, 148, 136

 202, 148, 136

255, 255, 255

 174, 122, 111

 255, 202, 189

 146, 97, 86

 255, 230, 217

 120, 73, 63

 255, 255, 246

 94, 50, 41


 68, 28, 21

 45, 6, 0

 5, 0, 0


 0, 0, 0


 202, 148, 136

 202, 148, 136

 202, 131, 116

 202, 165, 156

 202, 115, 96

 202, 181, 176

 202, 98, 75

 202, 198, 197

 202, 82, 55

 202, 214, 217

 202, 65, 35

 202, 231, 237

 202, 49, 15

 202, 247, 255

 202, 37, 0

 202, 255, 255

Harmonies

Analogous

The Analogous color harmony consists of three colors that are next to each other on the color wheel.



203, 145, 156



202, 148, 136



190, 154, 122

Triad

The Triadic color harmony groups three colors that are evenly spaced from another and form a triangle on the color wheel.



202, 148, 136



124, 171, 144



142, 161, 202

Complementary

The Complementary color scheme is a pair of colors which are on the opposite of each other on the color wheel.



202, 148, 136



136, 190, 202

Split Complementary

Split-complementary colors differ from the complementary color scheme. The scheme consists of three colors, the original color and two neighbors of the complement color.



115, 167, 199



202, 148, 136



104, 173, 165

Square

The Square scheme is like the rectangle color scheme, but the four colors are evenly spaced on the color wheel.



202, 148, 136



148, 167, 127



100, 171, 186



171, 154, 194

Rectangle

The Rectangle color scheme consists of four colors that form a rectangle on the color wheel.



202, 148, 136



178, 159, 119



100, 171, 186



132, 163, 203

Sweetspot

The Sweet Spot groups the original color and five complimentary colors.



202, 148, 136



255, 234, 230



202, 136, 191



128, 115, 112



0, 0, 0



128, 128, 128

Same Dimension

The Same Dimension uses a secret algorithm to generate beautiful new colors.



202, 148, 136



255, 174, 156



202, 180, 136



102, 94, 92



166, 30, 0



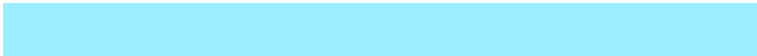
38, 7, 0

Inverse Universe

The Inverse Universe completely reimagines the original color for something new.



136, 190, 202



156, 237, 255



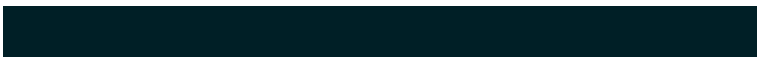
136, 158, 202



92, 100, 102



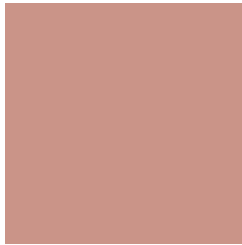
0, 136, 166



0, 31, 38

Previews

White Background



This preview shows how the RGB color 202, 148, 136 looks on a white background.

Color Contrast Check

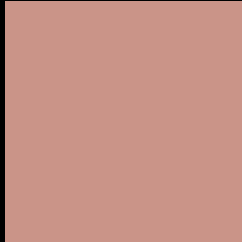
Large Text (above 18pt) WCAG AA × Fail

Any Text WCAG AA × Fail

Large Text (above 18pt) WCAG AAA × Fail

Any Text WCAG AAA × Fail

Black Background



This preview shows how the RGB color 202, 148, 136 looks on a black background.

Color Contrast Check

Large Text (above 18pt) WCAG AA ✓ Pass

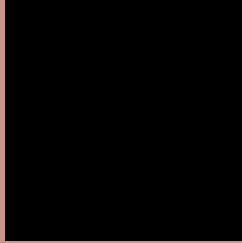
Any Text WCAG AA ✓ Pass

Large Text (above 18pt) WCAG AAA ✓ Pass

Any Text WCAG AAA ✓ Pass

If you want to check with other color combinations, try the [Color Contrast Checker](#).

RGB 202, 148, 136 Background



This preview shows how black text looks on a background with the RGB color 202, 148, 136.



This preview shows how white text looks on a background with the RGB color 202, 148, 136.

Color Blindness Simulation

Color vision deficiency is a very complex topic, and I could not describe the different causes any better than Wikipedia does, so if you want to learn more, you should check out their [article about color blindness](#).

Dichromacy





Tritanopia
204, 145, 156

Trichromacy



Original Color

202, 148, 136

Protanomaly

180, 156, 140

Deuteranomaly

192, 152, 135

Tritanomaly

203, 146, 149

Monochromacy



Original Color

202, 148, 136

Achromatopsia

163, 163, 163

Achromatomaly

177, 158, 153

CSS Examples

Text

The CSS property to change the color of the text to RGB 202, 148, 136 is called "color". The color property can be set on classes, ids or directly on the HTML element.

This example shows how text in the color rgb(202, 148, 136) looks like.

```
.text, #text, p{  
    color:rgb(202, 148, 136)  
}
```

If you want to add a text shadow in that color use the text-shadow property, you can generate a text shadow directly with our [CSS Text Shadow Generator](#).

Here you see how black text with a 4 pixel rgb(202, 148, 136) colored shadow looks like.

```
.shadow{ text-shadow: 4px 4px 2px rgb(202, 148, 136) }
```

Border

The CSS property to change the border of an element to RGB 202, 148, 136 is called "border". The border property can be set on classes, ids or directly on the HTML element.

This example shows the color as border, it can be applied via the CSS property "border" or "border-color".

```
.border, #border, table{ border:4px solid rgb(202, 148, 136) }
```

If only the border color should be changed use the property `border-color`.

```
.border{ border-color:rgb(202, 148, 136) }
```

If you want to add a box shadow in that color use:

Here you see how a box with a 4 pixel `rgb(202, 148, 136)` colored shadow looks like.

```
.boxshadow{ -moz-box-shadow:4px 4px 4px  
4px rgb(202, 148, 136); -webkit-box-  
shadow:4px 4px 4px 4px rgb(202, 148, 136);  
box-shadow:4px 4px 4px 4px rgb(202, 148,  
136) }
```

Background

The CSS property to change the background color of an element to RGB 202, 148, 136 is called "background". The background property can be set on classes, ids or directly on the HTML element.

```
.background, #background, body{  
background: rgb(202, 148, 136) }
```

If only the background color should be changed can be used:

```
.background{ background-color: rgb(202,  
148, 136) }
```

This example shows the color as background, it is applied via the CSS property "background".

To optimize and compress your CSS code, you can use our [online CSS compressor and optimizer](#) based on csstidy. If you want to create a linear or radial gradient as background or border, check our [CSS Gradient Generator](#).

Hey! You found this booklet interesting? Support Converting Colors with the new Membership Option!

The pro membership hides all ads, plus gives you double the colors in the color bucket, and more awesome pro features!

[Learn more, Memberships starting at \\$2.50/m!](#)

**Follow me
on Twitter!**

@ConvertingColor