

Converting Colors

RGB(202, 164, 155)

Have a look what the booklet for
RGB(202, 164, 155) contains.

RGB(202, 164, 155)	3
<i>Conversions</i>	4
<i>Details</i>	6
<i>Harmonies</i>	11
<i>Previews</i>	23
<i>Color Blindness Simulation</i>	26
<i>CSS Examples</i>	29

Color

RGB(202, 164, 155)

Conversions

Conversions Part 1

Format	Color
Hex	CAA49B
RGB	202, 164, 155
RGB Percent	79%, 64%, 61%
CMY	0.2078, 0.3569, 0.3922
CMYK	0.00, 0.19, 0.23, 0.21
HSL	11°, 31%, 70%
HSV	11°, 23%, 79%
XYZ	43.5490, 41.4740, 36.7204
YIQ	174.3360, 25.5370, 5.2570

Conversions

Conversions Part 2

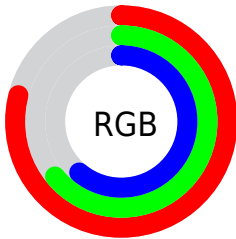
Format	Color
R _Y B	202, 166, 155
Decimal	13280411
CIE Lab	70.51, 12.59, 9.94
CIE LCh	71, 16.039, 38.284
Yxy	41.4740, 0.3577, 0.3407
Android (android.graphics.Color)	4291470491 (0xFFCAA49B)
YUV	174.3360, -9.5326, 24.2613
Hunter-Lab	64.4003, 8.0052, 11.2737

Details

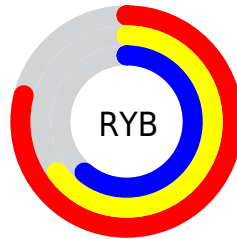
The RGB color **202, 164, 155** is a light color, and the websafe version is hex **CC9999**. A complement of this color would be **155, 193, 202**, and the grayscale version is **174, 174, 174**.

A 20% lighter version of the original color is **255, 219, 209**, and **147, 112, 104** is the 20% darker color. If you saturate the color by 10%, you get **202, 148, 135**, and if you desaturate by 10%, it is **202, 180, 175**.

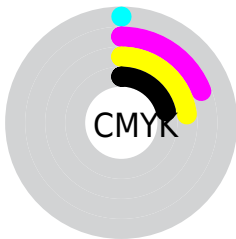
Distribution



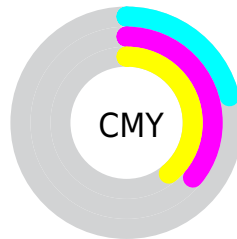
- Red (79%)
- Green (64%)
- Blue (61%)



- Red (79%)
- Yellow (65%)
- Blue (61%)



- Cyan (0%)
- Magenta (19%)
- Yellow (23%)
- Black (21%)




- Cyan (21%)
- Magenta (36%)
- Yellow (39%)

Brightness & Saturation Gradients


These gradients show how the RGB color 202, 164, 155 changes by changing the brightness by 10 percent. The first figure shows a shift by +10% for each color and the second figure -10%.

Similar to the brightness gradients but the following saturation gradients show a change of the RGB color 202, 164, 155 by changing the saturation by 10% instead.

 202, 164, 155

 202, 164, 155


255, 255, 255

 174, 138, 129


 255, 219, 209

 147, 112, 104

 255, 248, 238

 121, 88, 80

 96, 64, 57

 71, 42, 35

 48, 21, 14

 27, 0, 0


 0, 0, 0


 202, 164, 155


 202, 164, 155

 202, 148, 135

 202, 180, 175

 202, 131, 115


 202, 197, 195

 202, 115, 94

 202, 213, 216

 202, 99, 74

 202, 229, 236

 202, 82, 54

 202, 246, 255

 202, 66, 34

 202, 255, 255

 202, 50, 14

 202, 39, 0

Harmonies

Analogous

The Analogous color harmony consists of three colors that are next to each other on the color wheel.



203, 162, 169



202, 164, 155



194, 168, 146

Triad

The Triadic color harmony groups three colors that are evenly spaced from another and form a triangle on the color wheel.



202, 164, 155



147, 180, 161



161, 172, 201

Complementary

The Complementary color scheme is a pair of colors which are on the opposite of each other on the color wheel.



202, 164, 155



155, 193, 202

Split Complementary

Split-complementary colors differ from the complementary color scheme. The scheme consists of three colors, the original color and two neighbors of the complement color.



144, 177, 199



202, 164, 155



136, 181, 176

Square

The Square scheme is like the rectangle color scheme, but the four colors are evenly spaced on the color wheel.



202, 164, 155



163, 177, 149



135, 180, 190



180, 167, 195

Rectangle

The Rectangle color scheme consists of four colors that form a rectangle on the color wheel.



202, 164, 155



185, 171, 144



135, 180, 190



155, 174, 201

Sweetspot

The Sweet Spot groups the original color and five complimentary colors.



202, 164, 155



255, 241, 237



202, 155, 193



128, 119, 117



0, 0, 0



128, 128, 128

Same Dimension

The Same Dimension uses a secret algorithm to generate beautiful new colors.



202, 164, 155



255, 197, 184



202, 187, 155



102, 94, 92



166, 32, 0



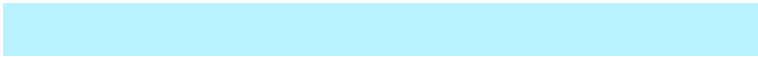
38, 7, 0

Inverse Universe

The Inverse Universe completely reimagines the original color for something new.



155, 193, 202



184, 241, 255



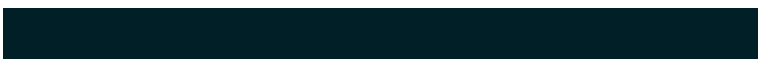
155, 170, 202



92, 100, 102



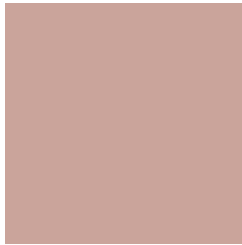
0, 134, 166



0, 31, 38

Previews

White Background



This preview shows how the RGB color 202, 164, 155 looks on a white background.

Color Contrast Check

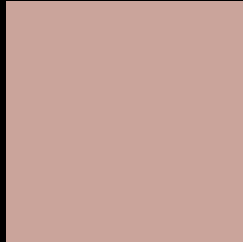
Large Text (above 18pt) WCAG AA × Fail

Any Text WCAG AA × Fail

Large Text (above 18pt) WCAG AAA × Fail

Any Text WCAG AAA × Fail

Black Background



This preview shows how the RGB color 202, 164, 155 looks on a black background.

Color Contrast Check

Large Text (above 18pt) WCAG AA ✓ Pass

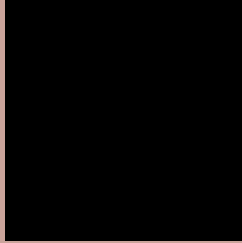
Any Text WCAG AA ✓ Pass

Large Text (above 18pt) WCAG AAA ✓ Pass

Any Text WCAG AAA ✓ Pass

If you want to check with other color combinations, try the [Color Contrast Checker](#).

RGB 202, 164, 155 Background



This preview shows how black text looks on a background with the RGB color 202, 164, 155.



This preview shows how white text looks on a background with the RGB color 202, 164, 155.

Color Blindness Simulation

Color vision deficiency is a very complex topic, and I could not describe the different causes any better than Wikipedia does, so if you want to learn more, you should check out their [article about color blindness](#).


Dichromacy



Original Color
202, 164, 155

Protanopia
179, 172, 159

Deuteranopia
196, 166, 155



Tritanopia
204, 161, 174

Trichromacy



Original Color

202, 164, 155

Protanomaly

187, 169, 158

Deuteranomaly

198, 165, 155

Tritanomaly

203, 162, 167

Monochromacy



Original Color

202, 164, 155

Achromatopsia

174, 174, 174

Achromatomaly

184, 170, 167

CSS Examples

Text

The CSS property to change the color of the text to RGB 202, 164, 155 is called "color". The color property can be set on classes, ids or directly on the HTML element.

This example shows how text in the color rgb(202, 164, 155) looks like.

```
.text, #text, p{  
    color:rgb(202, 164, 155)  
}
```

If you want to add a text shadow in that color use the text-shadow property, you can generate a text shadow directly with our [CSS Text Shadow Generator](#).

Here you see how black text with a 4 pixel rgb(202, 164, 155) colored shadow looks like.

```
.shadow{ text-shadow: 4px 4px 2px rgb(202, 164, 155) }
```

Border

The CSS property to change the border of an element to RGB 202, 164, 155 is called "border". The border property can be set on classes, ids or directly on the HTML element.

This example shows the color as border, it can be applied via the CSS property "border" or "border-color".

```
.border, #border, table{ border:4px solid rgb(202, 164, 155) }
```

If only the border color should be changed use the property `border-color`.

```
.border{ border-color:rgb(202, 164, 155) }
```

If you want to add a box shadow in that color use:

Here you see how a box with a 4 pixel `rgb(202, 164, 155)` colored shadow looks like.

```
.boxshadow{ -moz-box-shadow:4px 4px 4px  
4px rgb(202, 164, 155); -webkit-box-  
shadow:4px 4px 4px 4px rgb(202, 164, 155);  
box-shadow:4px 4px 4px 4px rgb(202, 164,  
155) }
```

Background

The CSS property to change the background color of an element to RGB 202, 164, 155 is called "background". The background property can be set on classes, ids or directly on the HTML element.

```
.background, #background, body{  
background: rgb(202, 164, 155) }
```

If only the background color should be changed can be used:

```
.background{ background-color: rgb(202,  
164, 155) }
```

This example shows the color as background, it is applied via the CSS property "background".

To optimize and compress your CSS code, you can use our [online CSS compressor and optimizer](#) based on csstidy. If you want to create a linear or radial gradient as background or border, check our [CSS Gradient Generator](#).

Hey! You found this booklet interesting? Support Converting Colors with the new Membership Option!

The pro membership hides all ads, plus gives you double the colors in the color bucket, and more awesome pro features!

[Learn more, Memberships starting at \\$2.50/m!](#)

**Follow me
on Twitter!**

@ConvertingColor