

Converting Colors

RGB(202, 74, 124)

Have a look what the booklet for
RGB(202, 74, 124) contains.

RGB(202, 74, 124)	3
<i>Conversions</i>	4
<i>Details</i>	6
<i>Harmonies</i>	11
<i>Previews</i>	23
<i>Color Blindness Simulation</i>	26
<i>CSS Examples</i>	29

Color

RGB(202, 74, 124)

Conversions

Conversions Part 1

Format	Color
Hex	CA4A7C
RGB	202, 74, 124
RGB Percent	79%, 29%, 49%
CMY	0.2078, 0.7098, 0.5137
CMYK	0.00, 0.63, 0.39, 0.21
HSL	337°, 55%, 54%
HSV	337°, 63%, 79%
XYZ	30.4440, 18.9094, 21.1141
YIQ	117.9720, 60.2380, 42.6860

Conversions

Conversions Part 2

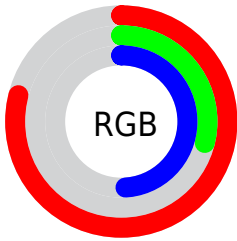
Format	Color
R_{YB}	202, 74, 124
Decimal	13257340
CIE Lab	50.58, 55.12, -0.97
CIE LCh	51, 55.125, 358.994
Yxy	18.9094, 0.4320, 0.2683
Android (android.graphics.Color)	4291447420 (0xFFCA4A7C)
YUV	117.9720, 2.9718, 73.6926
Hunter-Lab	43.4849, 48.8702, 1.6512

Details

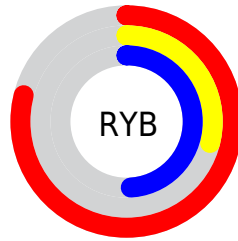
The RGB color **202, 74, 124** is a dark color, and the websafe version is hex **CC3366**. The color can be described as dark muted rose. A complement of this color would be **74, 202, 152**, and the grayscale version is **118, 118, 118**.

A 20% lighter version of the original color is **255, 129, 176**, and **144, 3, 75** is the 20% darker color. If you saturate the color by 10%, you get **202, 54, 112**, and if you desaturate by 10%, it is **202, 94, 136**.

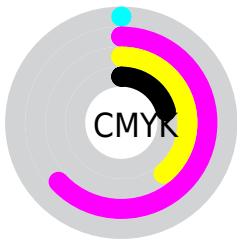
Distribution



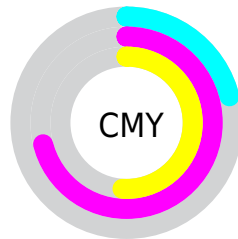
- Red (79%)
- Green (29%)
- Blue (49%)



- Red (79%)
- Yellow (29%)
- Blue (49%)



- Cyan (0%)
- Magenta (63%)
- Yellow (39%)
- Black (21%)



- Cyan (21%)
- Magenta (71%)
- Yellow (51%)

Brightness & Saturation Gradients

These gradients show how the RGB color 202, 74, 124 changes by changing the brightness by 10 percent. The first figure shows a shift by +10% for each color and the second figure -10%.

Similar to the brightness gradients but the following saturation gradients show a change of the RGB color 202, 74, 124 by changing the saturation by 10% instead.



202, 74, 124



202, 74, 124

255, 255, 255



173, 45, 99



255, 129, 176



144, 3, 75



255, 157, 204



115, 0, 53



255, 185, 232



87, 0, 32



255, 214, 255



62, 0, 7



255, 243, 255



28, 0, 1



0, 0, 0



202, 74, 124



202, 74, 124



202, 54, 112



202, 94, 136

202, 34, 99

202, 114, 149

202, 13, 87

202, 135, 161

202, 0, 79

202, 155, 173

202, 175, 186

202, 195, 198

202, 215, 210

202, 236, 222

202, 255, 235

Harmonies

Analogous

The Analogous color harmony consists of three colors that are next to each other on the color wheel.



175, 87, 170



202, 74, 124



202, 80, 78

Triad

The Triadic color harmony groups three colors that are evenly spaced from another and form a triangle on the color wheel.



202, 74, 124



99, 131, 28



0, 137, 201

Complementary

The Complementary color scheme is a pair of colors which are on the opposite of each other on the color wheel.



202, 74, 124



74, 202, 152

Split Complementary

Split-complementary colors differ from the complementary color scheme. The scheme consists of three colors, the original color and two neighbors of the complement color.



0, 142, 165



202, 74, 124



16, 139, 69

Square

The Square scheme is like the rectangle color scheme, but the four colors are evenly spaced on the color wheel.



202, 74, 124



145, 118, 7



0, 142, 117



0, 126, 215

Rectangle

The Rectangle color scheme consists of four colors that form a rectangle on the color wheel.



202, 74, 124



190, 93, 50



0, 142, 117



0, 139, 191

Sweetspot

The Sweet Spot groups the original color and five complimentary colors.



202, 74, 124



255, 207, 225



151, 74, 202



128, 98, 110



0, 0, 0



128, 128, 128

Same Dimension

The Same Dimension uses a secret algorithm to generate beautiful new colors.



202, 74, 124



255, 61, 137



202, 87, 74



102, 92, 96



166, 0, 65



38, 0, 15

Inverse Universe

The Inverse Universe completely reimagines the original color for something new.



202, 74, 124



255, 61, 137



74, 189, 202



102, 92, 96



166, 0, 65



38, 0, 15

Previews

White Background



This preview shows how the RGB color 202, 74, 124 looks on a white background.

Color Contrast Check

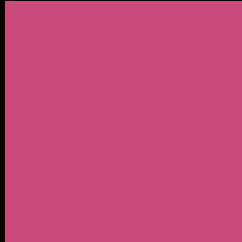
Large Text (above 18pt) WCAG AA ✓ Pass

Any Text WCAG AA ✗ Fail

Large Text (above 18pt) WCAG AAA ✗ Fail

Any Text WCAG AAA ✗ Fail

Black Background



This preview shows how the RGB color 202, 74, 124 looks on a black background.

Color Contrast Check

Large Text (above 18pt) WCAG AA ✓ Pass

Any Text WCAG AA ✓ Pass

Large Text (above 18pt) WCAG AAA ✓ Pass

Any Text WCAG AAA × Fail

If you want to check with other color combinations, try the [Color Contrast Checker](#).

RGB 202, 74, 124 Background



This preview shows how black text looks on a background with the RGB color 202, 74, 124.

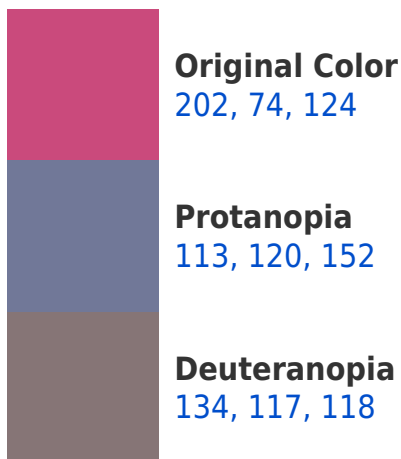


This preview shows how white text looks on a background with the RGB color 202, 74, 124.

Color Blindness Simulation

Color vision deficiency is a very complex topic, and I could not describe the different causes any better than Wikipedia does, so if you want to learn more, you should check out their [article about color blindness](#).

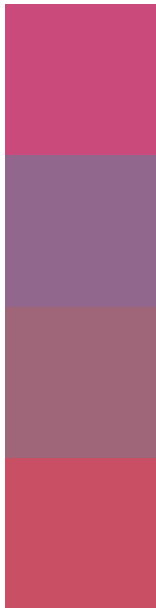
Dichromacy





Tritanopia
199, 82, 87

Trichromacy



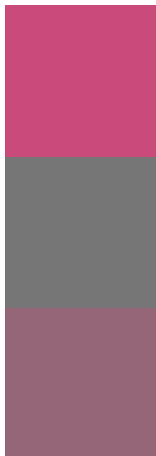
Original Color
202, 74, 124

Protanomaly
145, 103, 142

Deuteranomaly
159, 101, 120

Tritanomaly
200, 79, 100

Monochromacy



Original Color
202, 74, 124

Achromatopsia
118, 118, 118

Achromatomaly
149, 102, 120

CSS Examples

Text

The CSS property to change the color of the text to RGB 202, 74, 124 is called "color". The color property can be set on classes, ids or directly on the HTML element.

This example shows how text in the color `rgb(202, 74, 124)` looks like.

```
.text, #text, p{  
    color:rgb(202, 74, 124)  
}
```

If you want to add a text shadow in that color use the text-shadow property, you can generate a text shadow directly with our [CSS Text Shadow Generator](#).

Here you see how black text with a 4 pixel rgb(202, 74, 124) colored shadow looks like.

```
.shadow{ text-shadow: 4px 4px 2px rgb(202, 74, 124) }
```

Border

The CSS property to change the border of an element to RGB 202, 74, 124 is called "border". The border property can be set on classes, ids or directly on the HTML element.

This example shows the color as border, it can be applied via the CSS property "border" or "border-color".

```
.border, #border, table{ border:4px solid rgb(202, 74, 124) }
```

If only the border color should be changed use the property `border-color`.

```
.border{ border-color:rgb(202, 74, 124) }
```

If you want to add a box shadow in that color use:

Here you see how a box with a 4 pixel `rgb(202, 74, 124)` colored shadow looks like.

```
.boxshadow{ -moz-box-shadow:4px 4px 4px  
4px rgb(202, 74, 124); -webkit-box-  
shadow:4px 4px 4px 4px rgb(202, 74, 124);  
box-shadow:4px 4px 4px 4px rgb(202, 74,  
124) }
```

Background

The CSS property to change the background color of an element to RGB 202, 74, 124 is called "background". The background property can be set on classes, ids or directly on the HTML element.

```
.background, #background, body{  
background: rgb(202, 74, 124) }
```

If only the background color should be changed can be used:

```
.background{ background-color: rgb(202, 74,  
124) }
```

This example shows the color as background, it is applied via the CSS property "background".

To optimize and compress your CSS code, you can use our [online CSS compressor and optimizer](#) based on csstidy. If you want to create a linear or radial gradient as background or border, check our [CSS Gradient Generator](#).

Hey! You found this booklet interesting? Support Converting Colors with the new Membership Option!

The pro membership hides all ads, plus gives you double the colors in the color bucket, and more awesome pro features!

[Learn more, Memberships starting at \\$2.50/m!](#)

**Follow me
on Twitter!**

@ConvertingColor