

Converting Colors

RGB(203, 141, 123)

Have a look what the booklet for
RGB(203, 141, 123) contains.

RGB(203, 141, 123)	3
<i>Conversions</i>	4
<i>Details</i>	6
<i>Harmonies</i>	11
<i>Previews</i>	23
<i>Color Blindness Simulation</i>	26
<i>CSS Examples</i>	29

Color

RGB(203, 141, 123)

Conversions

Conversions Part 1

Format	Color
Hex	CB8D7B
RGB	203, 141, 123
RGB Percent	80%, 55%, 48%
CMY	0.2039, 0.4471, 0.5176
CMYK	0.00, 0.31, 0.39, 0.20
HSL	14°, 43%, 64%
HSV	14°, 39%, 80%
XYZ	37.7286, 33.1763, 23.1540
YIQ	157.4860, 42.7300, 7.5460

Conversions

Conversions Part 2

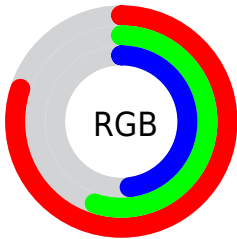
Format	Color
R_{YB}	203, 146, 123
Decimal	13340027
CIE _{Lab}	64.30, 21.33, 19.08
CIE _{LCh}	64, 28.615, 41.812
Yxy	33.1763, 0.4011, 0.3527
Android (android.graphics.Color)	4291530107 (0xFFFCB8D7B)
YUV	157.4860, -17.0016, 39.9158
Hunter-Lab	57.5989, 16.1236, 16.4854

Details

The RGB color **203, 141, 123** is a light color, and the websafe version is hex **CC9999**. A complement of this color would be **123, 185, 203**, and the grayscale version is **158, 158, 158**.

A 20% lighter version of the original color is **255, 195, 176**, and **147, 90, 74** is the 20% darker color. If you saturate the color by 10%, you get **203, 125, 103**, and if you desaturate by 10%, it is **203, 157, 143**.

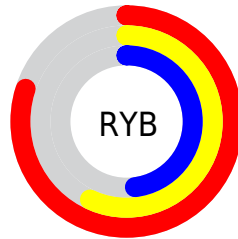
Distribution



Red (80%)

Green (55%)

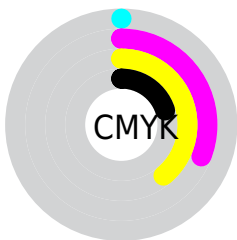
Blue (48%)



Red (80%)

Yellow (57%)

Blue (48%)

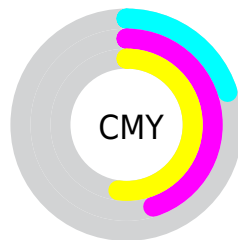


Cyan (0%)

Magenta (31%)

Yellow (39%)

Black (20%)



Cyan (20%)

Magenta (45%)

Yellow (52%)

Brightness & Saturation Gradients

These gradients show how the RGB color 203, 141, 123 changes by changing the brightness by 10 percent. The first figure shows a shift by +10% for each color and the second figure -10%.

Similar to the brightness gradients but the following saturation gradients show a change of the RGB color 203, 141, 123 by changing the saturation by 10% instead.

 203, 141, 123

 203, 141, 123

255, 255, 255

 175, 115, 98

 255, 195, 176

 147, 90, 74

 255, 223, 203

 120, 66, 51

 255, 252, 231

 93, 44, 30

 68, 22, 7

 43, 0, 0

 0, 0, 0

 203, 141, 123

 203, 141, 123

 203, 125, 103

 203, 157, 143

■ 203, 110, 82

■ 203, 172, 164

■ 203, 94, 62

■ 203, 188, 184

■ 203, 78, 42

■ 203, 204, 204

■ 203, 62, 22

■ 203, 220, 225

■ 203, 47, 1

■ 203, 235, 245

■ 203, 46, 0

■ 203, 251, 255

■ 203, 255, 255

Harmonies

Analogous

The Analogous color harmony consists of three colors that are next to each other on the color wheel.



207, 137, 147



203, 141, 123



187, 149, 108

Triad

The Triadic color harmony groups three colors that are evenly spaced from another and form a triangle on the color wheel.



203, 141, 123



105, 169, 139



137, 155, 206

Complementary

The Complementary color scheme is a pair of colors which are on the opposite of each other on the color wheel.



203, 141, 123



123, 185, 203

Split Complementary

Split-complementary colors differ from the complementary color scheme. The scheme consists of three colors, the original color and two neighbors of the complement color.



100, 163, 204



203, 141, 123



80, 170, 165

Square

The Square scheme is like the rectangle color scheme, but the four colors are evenly spaced on the color wheel.



203, 141, 123



135, 164, 117



74, 168, 189



172, 146, 194

Rectangle

The Rectangle color scheme consists of four colors that form a rectangle on the color wheel.



203, 141, 123



172, 155, 105



74, 168, 189



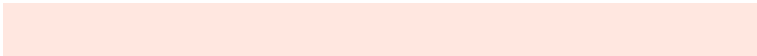
125, 158, 207

Sweetspot

The Sweet Spot groups the original color and five complimentary colors.



203, 141, 123



255, 231, 224



203, 123, 186



128, 114, 110



0, 0, 0



128, 128, 128

Same Dimension

The Same Dimension uses a secret algorithm to generate beautiful new colors.



203, 141, 123



255, 162, 135



203, 180, 123



102, 94, 92



166, 37, 0



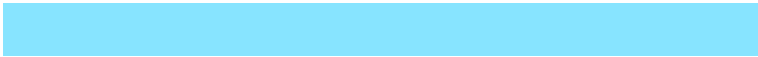
38, 9, 0

Inverse Universe

The Inverse Universe completely reimagines the original color for something new.



123, 185, 203



135, 228, 255



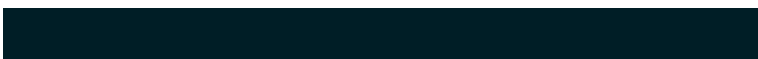
123, 146, 203



92, 100, 102



0, 128, 166



0, 30, 38

Previews

White Background



This preview shows how the RGB color 203, 141, 123 looks on a white background.

Color Contrast Check

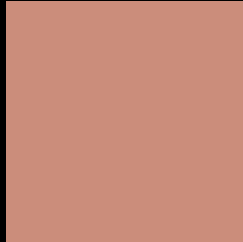
Large Text (above 18pt) WCAG AA × Fail

Any Text WCAG AA × Fail

Large Text (above 18pt) WCAG AAA × Fail

Any Text WCAG AAA × Fail

Black Background



This preview shows how the RGB color 203, 141, 123 looks on a black background.

Color Contrast Check

Large Text (above 18pt) WCAG AA ✓ Pass

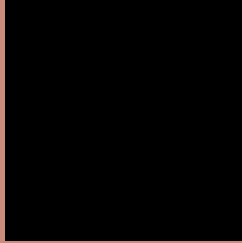
Any Text WCAG AA ✓ Pass

Large Text (above 18pt) WCAG AAA ✓ Pass

Any Text WCAG AAA ✓ Pass

If you want to check with other color combinations, try the [Color Contrast Checker](#).

RGB 203, 141, 123 Background



This preview shows how black text looks on a background with the RGB color 203, 141, 123.



This preview shows how white text looks on a background with the RGB color 203, 141, 123.

Color Blindness Simulation

Color vision deficiency is a very complex topic, and I could not describe the different causes any better than Wikipedia does, so if you want to learn more, you should check out their [article about color blindness](#).


Dichromacy



Original Color
203, 141, 123

Protanopia
165, 156, 130

Deuteranopia
183, 150, 121



Tritanopia
205, 137, 148

Trichromacy



Original Color

203, 141, 123

Protanomaly

179, 151, 127

Deuteranomaly

190, 147, 122

Tritanomaly

204, 138, 139

Monochromacy



Original Color

203, 141, 123

Achromatopsia

157, 157, 157

Achromatomaly

174, 151, 145

CSS Examples

Text

The CSS property to change the color of the text to RGB 203, 141, 123 is called "color". The color property can be set on classes, ids or directly on the HTML element.

This example shows how text in the color `rgb(203, 141, 123)` looks like.

```
.text, #text, p{  
    color:rgb(203, 141, 123)  
}
```

If you want to add a text shadow in that color use the text-shadow property, you can generate a text shadow directly with our [CSS Text Shadow Generator](#).

Here you see how black text with a 4 pixel rgb(203, 141, 123) colored shadow looks like.

```
.shadow{ text-shadow: 4px 4px 2px rgb(203, 141, 123) }
```

Border

The CSS property to change the border of an element to RGB 203, 141, 123 is called "border". The border property can be set on classes, ids or directly on the HTML element.

This example shows the color as border, it can be applied via the CSS property "border" or "border-color".

```
.border, #border, table{ border:4px solid rgb(203, 141, 123) }
```

If only the border color should be changed use the property `border-color`.

```
.border{ border-color:rgb(203, 141, 123) }
```

If you want to add a box shadow in that color use:

Here you see how a box with a 4 pixel `rgb(203, 141, 123)` colored shadow looks like.

```
.boxshadow{ -moz-box-shadow:4px 4px 4px  
4px rgb(203, 141, 123); -webkit-box-  
shadow:4px 4px 4px 4px rgb(203, 141, 123);  
box-shadow:4px 4px 4px 4px rgb(203, 141,  
123) }
```

Background

The CSS property to change the background color of an element to RGB 203, 141, 123 is called "background". The background property can be set on classes, ids or directly on the HTML element.

```
.background, #background, body{  
background: rgb(203, 141, 123) }
```

If only the background color should be changed can be used:

```
.background{ background-color: rgb(203,  
141, 123) }
```

This example shows the color as background, it is applied via the CSS property "background".

To optimize and compress your CSS code, you can use our [online CSS compressor and optimizer](#) based on csstidy. If you want to create a linear or radial gradient as background or border, check our [CSS Gradient Generator](#).

Hey! You found this booklet interesting? Support Converting Colors with the new Membership Option!

The pro membership hides all ads, plus gives you double the colors in the color bucket, and more awesome pro features!

[Learn more, Memberships starting at \\$2.50/m!](#)

**Follow me
on Twitter!**

@ConvertingColor