

Converting Colors

RGB(203, 147, 132)

Have a look what the booklet for
RGB(203, 147, 132) contains.

RGB(203, 147, 132)	3
<i>Conversions</i>	4
<i>Details</i>	6
<i>Harmonies</i>	11
<i>Previews</i>	23
<i>Color Blindness Simulation</i>	26
<i>CSS Examples</i>	29

Color

RGB(203, 147, 132)

Conversions

Conversions Part 1

Format	Color
Hex	CB9384
RGB	203, 147, 132
RGB Percent	80%, 58%, 52%
CMY	0.2039, 0.4235, 0.4824
CMYK	0.00, 0.28, 0.35, 0.20
HSL	13°, 41%, 66%
HSV	13°, 35%, 80%
XYZ	39.2272, 35.2299, 26.5623
YIQ	162.0340, 38.1910, 7.2070

Conversions

Conversions Part 2

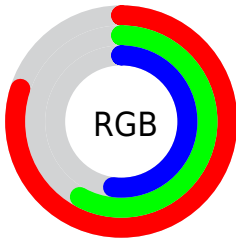
Format	Color
R_{YB}	203, 151, 132
Decimal	13341572
CIE _{Lab}	65.93, 19.13, 16.29
CIE _{LCh}	66, 25.124, 40.407
Yxy	35.2299, 0.3883, 0.3487
Android (android.graphics.Color)	4291531652 (0xFFCB9384)
YUV	162.0340, -14.8068, 35.9272
Hunter-Lab	59.3548, 14.0986, 15.0150

Details

The RGB color **203, 147, 132** is a light color, and the websafe version is hex **CC9999**. A complement of this color would be **132, 188, 203**, and the grayscale version is **162, 162, 162**.

A 20% lighter version of the original color is **255, 201, 185**, and **147, 96, 83** is the 20% darker color. If you saturate the color by 10%, you get **203, 131, 112**, and if you desaturate by 10%, it is **203, 163, 152**.

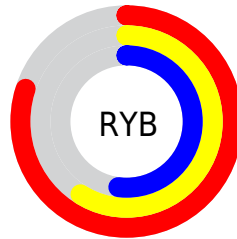
Distribution



Red (80%)

Green (58%)

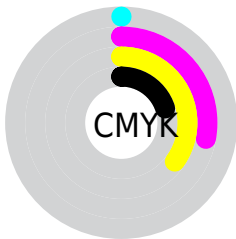
Blue (52%)



Red (80%)

Yellow (59%)

Blue (52%)

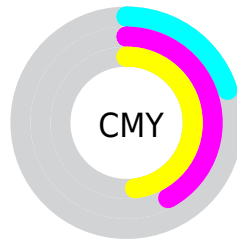


Cyan (0%)

Magenta (28%)

Yellow (35%)

Black (20%)



Cyan (20%)

Magenta (42%)

Yellow (48%)

Brightness & Saturation Gradients

These gradients show how the RGB color 203, 147, 132 changes by changing the brightness by 10 percent. The first figure shows a shift by +10% for each color and the second figure -10%.

Similar to the brightness gradients but the following saturation gradients show a change of the RGB color 203, 147, 132 by changing the saturation by 10% instead.

 203, 147, 132

 203, 147, 132

255, 255, 255

 175, 121, 107

 255, 201, 185

 147, 96, 83

 255, 229, 213

 120, 72, 59

 255, 255, 241

 94, 49, 38

 69, 27, 17

 45, 5, 0

 4, 0, 0


 0, 0, 0


 203, 147, 132

 203, 147, 132

 203, 131, 112

 203, 163, 152

 203, 115, 91

 203, 179, 173

 203, 99, 71

 203, 195, 193

 203, 83, 51

 203, 211, 213

 203, 67, 31

 203, 227, 234

 203, 51, 10

 203, 243, 254

 203, 43, 0

 203, 255, 255

Harmonies

Analogous

The Analogous color harmony consists of three colors that are next to each other on the color wheel.



206, 144, 153



203, 147, 132



190, 154, 118

Triad

The Triadic color harmony groups three colors that are evenly spaced from another and form a triangle on the color wheel.



203, 147, 132



118, 172, 144



143, 160, 204

Complementary

The Complementary color scheme is a pair of colors which are on the opposite of each other on the color wheel.



203, 147, 132



132, 188, 203

Split Complementary

Split-complementary colors differ from the complementary color scheme. The scheme consists of three colors, the original color and two neighbors of the complement color.



112, 167, 202



203, 147, 132



98, 173, 167

Square

The Square scheme is like the rectangle color scheme, but the four colors are evenly spaced on the color wheel.



203, 147, 132



143, 168, 125



94, 171, 189



174, 152, 195

Rectangle

The Rectangle color scheme consists of four colors that form a rectangle on the color wheel.



203, 147, 132



176, 159, 115



94, 171, 189



133, 162, 205

Sweetspot

The Sweet Spot groups the original color and five complimentary colors.



203, 147, 132



255, 235, 230



203, 132, 189



128, 115, 112



0, 0, 0



128, 128, 128

Same Dimension

The Same Dimension uses a secret algorithm to generate beautiful new colors.



203, 147, 132



255, 171, 148



203, 182, 132



102, 94, 92



166, 35, 0



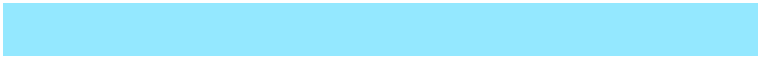
38, 8, 0

Inverse Universe

The Inverse Universe completely reimagines the original color for something new.



132, 188, 203



148, 232, 255



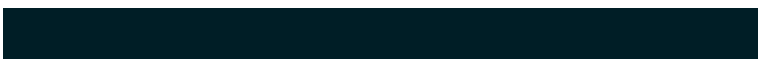
132, 153, 203



92, 100, 102



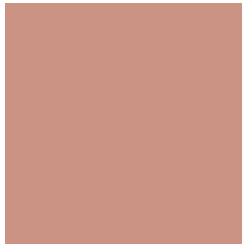
0, 131, 166



0, 30, 38

Previews

White Background



This preview shows how the RGB color 203, 147, 132 looks on a white background.

Color Contrast Check

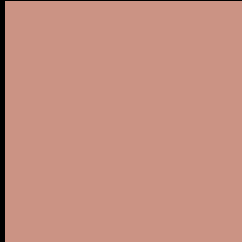
Large Text (above 18pt) WCAG AA × Fail

Any Text WCAG AA × Fail

Large Text (above 18pt) WCAG AAA × Fail

Any Text WCAG AAA × Fail

Black Background



This preview shows how the RGB color 203, 147, 132 looks on a black background.

Color Contrast Check

Large Text (above 18pt) WCAG AA ✓ Pass

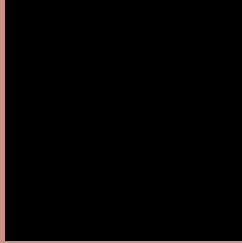
Any Text WCAG AA ✓ Pass

Large Text (above 18pt) WCAG AAA ✓ Pass

Any Text WCAG AAA ✓ Pass

If you want to check with other color combinations, try the [Color Contrast Checker](#).

RGB 203, 147, 132 Background



This preview shows how black text looks on a background with the RGB color 203, 147, 132.



This preview shows how white text looks on a background with the RGB color 203, 147, 132.

Color Blindness Simulation

Color vision deficiency is a very complex topic, and I could not describe the different causes any better than Wikipedia does, so if you want to learn more, you should check out their [article about color blindness](#).

Dichromacy



Original Color
203, 147, 132

Protanopia
168, 160, 138

Deuteranopia
186, 154, 131



Tritanopia
205, 144, 155

Trichromacy



Original Color
203, 147, 132

Protanomaly
181, 155, 136

Deuteranomaly
192, 151, 131

Tritanomaly
204, 145, 147

Monochromacy



Original Color
203, 147, 132

Achromatopsia
162, 162, 162

Achromatomaly
177, 157, 151

CSS Examples

Text

The CSS property to change the color of the text to RGB 203, 147, 132 is called "color". The color property can be set on classes, ids or directly on the HTML element.

This example shows how text in the color `rgb(203, 147, 132)` looks like.

```
.text, #text, p{  
    color:rgb(203, 147, 132)  
}
```

If you want to add a text shadow in that color use the text-shadow property, you can generate a text shadow directly with our [CSS Text Shadow Generator](#).

Here you see how black text with a 4 pixel rgb(203, 147, 132) colored shadow looks like.

```
.shadow{ text-shadow: 4px 4px 2px rgb(203, 147, 132) }
```

Border

The CSS property to change the border of an element to RGB 203, 147, 132 is called "border". The border property can be set on classes, ids or directly on the HTML element.

This example shows the color as border, it can be applied via the CSS property "border" or "border-color".

```
.border, #border, table{ border:4px solid rgb(203, 147, 132) }
```

If only the border color should be changed use the property `border-color`.

```
.border{ border-color:rgb(203, 147, 132) }
```

If you want to add a box shadow in that color use:

Here you see how a box with a 4 pixel `rgb(203, 147, 132)` colored shadow looks like.

```
.boxshadow{ -moz-box-shadow:4px 4px 4px  
4px rgb(203, 147, 132); -webkit-box-  
shadow:4px 4px 4px 4px rgb(203, 147, 132);  
box-shadow:4px 4px 4px 4px rgb(203, 147,  
132) }
```

Background

The CSS property to change the background color of an element to RGB 203, 147, 132 is called "background". The background property can be set on classes, ids or directly on the HTML element.

```
.background, #background, body{  
background: rgb(203, 147, 132) }
```

If only the background color should be changed can be used:

```
.background{ background-color: rgb(203,  
147, 132) }
```

This example shows the color as background, it is applied via the CSS property "background".

To optimize and compress your CSS code, you can use our [online CSS compressor and optimizer](#) based on csstidy. If you want to create a linear or radial gradient as background or border, check our [CSS Gradient Generator](#).

Hey! You found this booklet interesting? Support Converting Colors with the new Membership Option!

The pro membership hides all ads, plus gives you double the colors in the color bucket, and more awesome pro features!

[Learn more, Memberships starting at \\$2.50/m!](#)

**Follow me
on Twitter!**

@ConvertingColor