

Converting Colors

RGB(203, 153, 144)

Have a look what the booklet for
RGB(203, 153, 144) contains.

RGB(203, 153, 144)	3
<i>Conversions</i>	4
<i>Details</i>	6
<i>Harmonies</i>	11
<i>Previews</i>	23
<i>Color Blindness Simulation</i>	26
<i>CSS Examples</i>	29

Color

RGB(203, 153, 144)

Conversions

Conversions Part 1

Format	Color
Hex	CB9990
RGB	203, 153, 144
RGB Percent	80%, 60%, 56%
CMY	0.2039, 0.4000, 0.4353
CMYK	0.00, 0.25, 0.29, 0.20
HSL	9°, 36%, 68%
HSV	9°, 29%, 80%
XYZ	41.0539, 37.4926, 31.4586
YIQ	166.9240, 32.6890, 7.8010

Conversions

Conversions Part 2

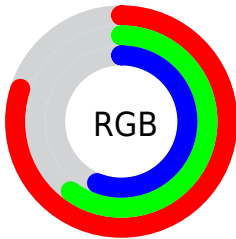
Format	Color
R _Y B	203, 155, 144
Decimal	13343120
CIE Lab	67.64, 17.42, 12.00
CIE LCh	68, 21.150, 34.560
Yxy	37.4926, 0.3732, 0.3408
Android (android.graphics.Color)	4291533200 (0xFFCB9990)
YUV	166.9240, -11.3015, 31.6387
Hunter-Lab	61.2312, 12.5249, 12.4006

Details

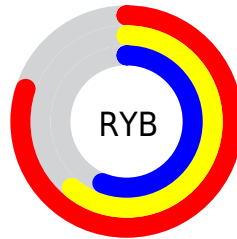
The RGB color **203, 153, 144** is a light color, and the websafe version is hex **CC9999**. A complement of this color would be **144, 194, 203**, and the grayscale version is **167, 167, 167**.

A 20% lighter version of the original color is **255, 208, 198**, and **148, 102, 94** is the 20% darker color. If you saturate the color by 10%, you get **203, 136, 124**, and if you desaturate by 10%, it is **203, 170, 164**.

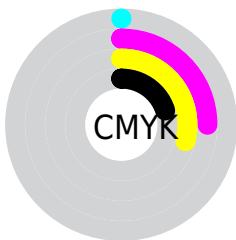
Distribution



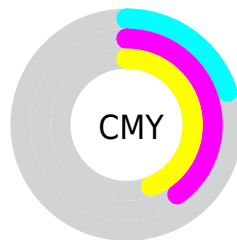
- Red (80%)
- Green (60%)
- Blue (56%)



- Red (80%)
- Yellow (61%)
- Blue (56%)



- Cyan (0%)
- Magenta (25%)
- Yellow (29%)
- Black (20%)



- Cyan (20%)
- Magenta (40%)
- Yellow (44%)

Brightness & Saturation Gradients

These gradients show how the RGB color 203, 153, 144 changes by changing the brightness by 10 percent. The first figure shows a shift by +10% for each color and the second figure -10%.

Similar to the brightness gradients but the following saturation gradients show a change of the RGB color 203, 153, 144 by changing the saturation by 10% instead.


 203, 153, 144

 203, 153, 144

255, 255, 255

 175, 127, 118

 255, 208, 198


 148, 102, 94

 255, 236, 226

 121, 78, 70

255, 255, 254

 95, 54, 48

 70, 32, 27

 47, 11, 0

 17, 0, 0

 0, 0, 0

 203, 153, 144


 203, 153, 144

 203, 136, 124

 203, 170, 164

 203, 119, 103

 203, 187, 185

 203, 101, 83

 203, 205, 205

 203, 84, 63

 203, 222, 225

 203, 67, 43

 203, 239, 246

 203, 50, 22

 203, 255, 255

 203, 33, 2

 203, 31, 0

Harmonies

Analogous

The Analogous color harmony consists of three colors that are next to each other on the color wheel.



203, 151, 162



203, 153, 144



193, 158, 131

Triad

The Triadic color harmony groups three colors that are evenly spaced from another and form a triangle on the color wheel.



203, 153, 144



134, 174, 148



146, 165, 202

Complementary

The Complementary color scheme is a pair of colors which are on the opposite of each other on the color wheel.



203, 153, 144



144, 194, 203

Split Complementary

Split-complementary colors differ from the complementary color scheme. The scheme consists of three colors, the original color and two neighbors of the complement color.



123, 171, 199



203, 153, 144



117, 176, 167

Square

The Square scheme is like the rectangle color scheme, but the four colors are evenly spaced on the color wheel.



203, 153, 144



155, 170, 133



111, 175, 186



172, 159, 196

Rectangle

The Rectangle color scheme consists of four colors that form a rectangle on the color wheel.



203, 153, 144



183, 162, 127



111, 175, 186



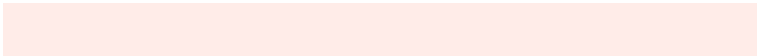
138, 168, 202

Sweetspot

The Sweet Spot groups the original color and five complimentary colors.



203, 153, 144



255, 236, 232



203, 144, 194



128, 116, 113



0, 0, 0



128, 128, 128

Same Dimension

The Same Dimension uses a secret algorithm to generate beautiful new colors.



203, 153, 144



255, 179, 166



203, 182, 144



102, 93, 92



166, 25, 0



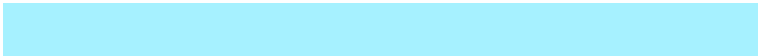
38, 6, 0

Inverse Universe

The Inverse Universe completely reimagines the original color for something new.



144, 194, 203



166, 241, 255



144, 165, 203



92, 100, 102



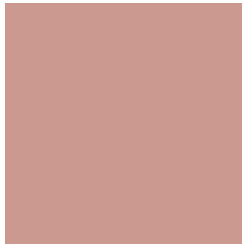
0, 140, 166



0, 32, 38

Previews

White Background



This preview shows how the RGB color 203, 153, 144 looks on a white background.

Color Contrast Check

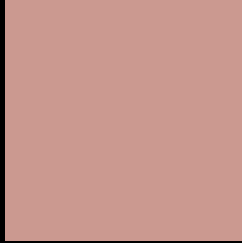
Large Text (above 18pt) WCAG AA × Fail

Any Text WCAG AA × Fail

Large Text (above 18pt) WCAG AAA × Fail

Any Text WCAG AAA × Fail

Black Background



This preview shows how the RGB color 203, 153, 144 looks on a black background.

Color Contrast Check

Large Text (above 18pt) WCAG AA ✓ Pass

Any Text WCAG AA ✓ Pass

Large Text (above 18pt) WCAG AAA ✓ Pass

Any Text WCAG AAA ✓ Pass

If you want to check with other color combinations, try the [Color Contrast Checker](#).

RGB 203, 153, 144 Background



This preview shows how black text looks on a background with the RGB color 203, 153, 144.



This preview shows how white text looks on a background with the RGB color 203, 153, 144.

Color Blindness Simulation

Color vision deficiency is a very complex topic, and I could not describe the different causes any better than Wikipedia does, so if you want to learn more, you should check out their [article about color blindness](#).

Dichromacy



Original Color
203, 153, 144

Protanopia
172, 165, 150

Deuteranopia
189, 159, 143



Tritanopia
205, 150, 162

Trichromacy



Original Color

203, 153, 144

Protanomaly

183, 161, 148

Deuteranomaly

194, 157, 143

Tritanomaly

204, 151, 155

Monochromacy



Original Color

203, 153, 144

Achromatopsia

167, 167, 167

Achromatomaly

180, 162, 159

CSS Examples

Text

The CSS property to change the color of the text to RGB 203, 153, 144 is called "color". The color property can be set on classes, ids or directly on the HTML element.

This example shows how text in the color `rgb(203, 153, 144)` looks like.

```
.text, #text, p{  
    color:rgb(203, 153, 144)  
}
```

If you want to add a text shadow in that color use the text-shadow property, you can generate a text shadow directly with our [CSS Text Shadow Generator](#).

Here you see how black text with a 4 pixel rgb(203, 153, 144) colored shadow looks like.

```
.shadow{ text-shadow: 4px 4px 2px rgb(203, 153, 144) }
```

Border

The CSS property to change the border of an element to RGB 203, 153, 144 is called "border". The border property can be set on classes, ids or directly on the HTML element.

This example shows the color as border, it can be applied via the CSS property "border" or "border-color".

```
.border, #border, table{ border:4px solid rgb(203, 153, 144) }
```

If only the border color should be changed use the property `border-color`.

```
.border{ border-color:rgb(203, 153, 144) }
```

If you want to add a box shadow in that color use:

Here you see how a box with a 4 pixel `rgb(203, 153, 144)` colored shadow looks like.

```
.boxshadow{ -moz-box-shadow:4px 4px 4px  
4px rgb(203, 153, 144); -webkit-box-  
shadow:4px 4px 4px 4px rgb(203, 153, 144);  
box-shadow:4px 4px 4px 4px rgb(203, 153,  
144) }
```

Background

The CSS property to change the background color of an element to RGB 203, 153, 144 is called "background". The background property can be set on classes, ids or directly on the HTML element.

```
.background, #background, body{  
background: rgb(203, 153, 144) }
```

If only the background color should be changed can be used:

```
.background{ background-color: rgb(203,  
153, 144) }
```

This example shows the color as background, it is applied via the CSS property "background".

To optimize and compress your CSS code, you can use our [online CSS compressor and optimizer](#) based on csstidy. If you want to create a linear or radial gradient as background or border, check our [CSS Gradient Generator](#).

Hey! You found this booklet interesting? Support Converting Colors with the new Membership Option!

The pro membership hides all ads, plus gives you double the colors in the color bucket, and more awesome pro features!

[Learn more, Memberships starting at \\$2.50/m!](#)

**Follow me
on Twitter!**

@ConvertingColor