

Converting Colors

RGB(203, 165, 163)

Have a look what the booklet for
RGB(203, 165, 163) contains.

RGB(203, 165, 163)	3
<i>Conversions</i>	4
<i>Details</i>	6
<i>Harmonies</i>	11
<i>Previews</i>	23
<i>Color Blindness Simulation</i>	26
<i>CSS Examples</i>	29

Color

RGB(203, 165, 163)

Conversions

Conversions Part 1

Format	Color
Hex	CBA5A3
RGB	203, 165, 163
RGB Percent	80%, 65%, 64%
CMY	0.2039, 0.3529, 0.3608
CMYK	0.00, 0.19, 0.20, 0.20
HSL	3°, 28%, 72%
HSV	3°, 20%, 80%
XYZ	44.6946, 42.2511, 40.4500
YIQ	176.1340, 23.2900, 7.4340

Conversions

Conversions Part 2

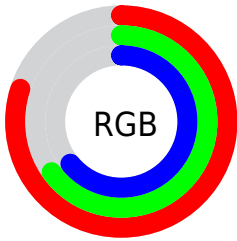
Format	Color
R _Y B	203, 165, 163
Decimal	13346211
CIE Lab	71.04, 13.63, 6.30
CIE LCh	71, 15.012, 24.816
Yxy	42.2511, 0.3508, 0.3317
Android (android.graphics.Color)	4291536291 (0xFFCBA5A3)
YUV	176.1340, -6.4751, 23.5615
Hunter-Lab	65.0009, 8.9851, 8.6045

Details

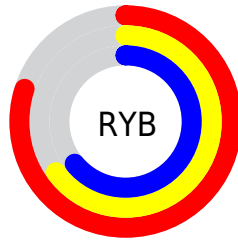
The RGB color **203, 165, 163** is a light color, and the websafe version is hex **CC9999**. A complement of this color would be **163, 201, 203**, and the grayscale version is **176, 176, 176**.

A 20% lighter version of the original color is **255, 220, 218**, and **148, 113, 111** is the 20% darker color. If you saturate the color by 10%, you get **203, 146, 143**, and if you desaturate by 10%, it is **203, 184, 183**.

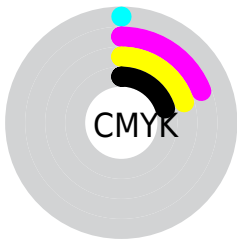
Distribution



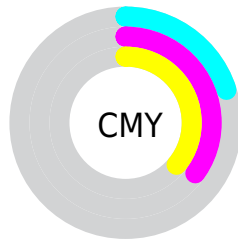
- Red (80%)
- Green (65%)
- Blue (64%)



- Red (80%)
- Yellow (65%)
- Blue (64%)



- Cyan (0%)
- Magenta (19%)
- Yellow (20%)
- Black (20%)



- Cyan (20%)
- Magenta (35%)
- Yellow (36%)

Brightness & Saturation Gradients


These gradients show how the RGB color 203, 165, 163 changes by changing the brightness by 10 percent. The first figure shows a shift by +10% for each color and the second figure -10%.

Similar to the brightness gradients but the following saturation gradients show a change of the RGB color 203, 165, 163 by changing the saturation by 10% instead.

 203, 165, 163

 203, 165, 163

255, 255, 255

 175, 139, 137

 255, 220, 218

 148, 113, 111

 255, 249, 246

 122, 88, 87

 97, 65, 64

 72, 43, 42

 49, 22, 22

 29, 0, 0

 0, 0, 0

 203, 165, 163


 203, 165, 163

 203, 146, 143

 203, 184, 183

 203, 126, 122

 203, 204, 204

 203, 107, 102

 203, 223, 224

 203, 88, 82

 203, 242, 244

 203, 69, 62

 203, 255, 255

 203, 49, 41

 203, 30, 21

 203, 11, 1

 203, 10, 0

Harmonies

Analogous

The Analogous color harmony consists of three colors that are next to each other on the color wheel.



200, 165, 177



203, 165, 163



198, 168, 152

Triad

The Triadic color harmony groups three colors that are evenly spaced from another and form a triangle on the color wheel.



203, 165, 163



157, 180, 158



156, 176, 201

Complementary

The Complementary color scheme is a pair of colors which are on the opposite of each other on the color wheel.



203, 165, 163



163, 201, 203

Split Complementary

Split-complementary colors differ from the complementary color scheme. The scheme consists of three colors, the original color and two neighbors of the complement color.



143, 180, 196



203, 165, 163



144, 182, 171

Square

The Square scheme is like the rectangle color scheme, but the four colors are evenly spaced on the color wheel.



203, 165, 163



172, 177, 149



138, 182, 185



174, 171, 199

Rectangle

The Rectangle color scheme consists of four colors that form a rectangle on the color wheel.



203, 165, 163



192, 171, 148



138, 182, 185



151, 177, 200

Sweetspot

The Sweet Spot groups the original color and five complimentary colors.



203, 165, 163



255, 240, 240



203, 163, 201



128, 119, 119



0, 0, 0



128, 128, 128

Same Dimension

The Same Dimension uses a secret algorithm to generate beautiful new colors.



203, 165, 163



255, 197, 194



203, 185, 163



102, 92, 92



166, 8, 0



38, 2, 0

Inverse Universe

The Inverse Universe completely reimagines the original color for something new.



163, 201, 203



194, 252, 255



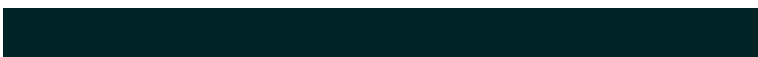
163, 181, 203



92, 101, 102



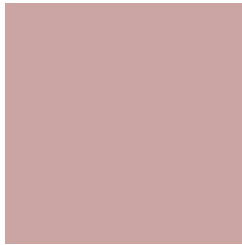
0, 157, 166



0, 36, 38

Previews

White Background



This preview shows how the RGB color 203, 165, 163 looks on a white background.

Color Contrast Check

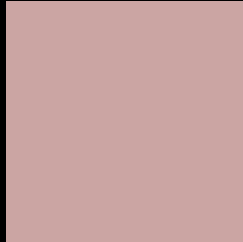
Large Text (above 18pt) WCAG AA × Fail

Any Text WCAG AA × Fail

Large Text (above 18pt) WCAG AAA × Fail

Any Text WCAG AAA × Fail

Black Background



This preview shows how the RGB color 203, 165, 163 looks on a black background.

Color Contrast Check

Large Text (above 18pt) WCAG AA ✓ Pass

Any Text WCAG AA ✓ Pass

Large Text (above 18pt) WCAG AAA ✓ Pass

Any Text WCAG AAA ✓ Pass

If you want to check with other color combinations, try the [Color Contrast Checker](#).

RGB 203, 165, 163 Background



This preview shows how black text looks on a background with the RGB color 203, 165, 163.



This preview shows how white text looks on a background with the RGB color 203, 165, 163.

Color Blindness Simulation

Color vision deficiency is a very complex topic, and I could not describe the different causes any better than Wikipedia does, so if you want to learn more, you should check out their [article about color blindness](#).


Dichromacy



Original Color
203, 165, 163

Protanopia
179, 173, 168

Deuteranopia
195, 168, 162



Tritanopia
205, 163, 176

Trichromacy



Original Color
203, 165, 163

Protanomaly
188, 170, 166

Deuteranomaly
198, 167, 162

Tritanomaly
204, 164, 171

Monochromacy



Original Color
203, 165, 163

Achromatopsia
176, 176, 176

Achromatomaly
186, 172, 171

CSS Examples

Text

The CSS property to change the color of the text to RGB 203, 165, 163 is called "color". The color property can be set on classes, ids or directly on the HTML element.

This example shows how text in the color rgb(203, 165, 163) looks like.

```
.text, #text, p{  
    color:rgb(203, 165, 163)  
}
```

If you want to add a text shadow in that color use the text-shadow property, you can generate a text shadow directly with our [CSS Text Shadow Generator](#).

Here you see how black text with a 4 pixel rgb(203, 165, 163) colored shadow looks like.

```
.shadow{ text-shadow: 4px 4px 2px rgb(203, 165, 163) }
```

Border

The CSS property to change the border of an element to RGB 203, 165, 163 is called "border". The border property can be set on classes, ids or directly on the HTML element.

This example shows the color as border, it can be applied via the CSS property "border" or "border-color".

```
.border, #border, table{ border:4px solid rgb(203, 165, 163) }
```

If only the border color should be changed use the property `border-color`.

```
.border{ border-color:rgb(203, 165, 163) }
```

If you want to add a box shadow in that color use:

Here you see how a box with a 4 pixel `rgb(203, 165, 163)` colored shadow looks like.

```
.boxshadow{ -moz-box-shadow:4px 4px 4px  
4px rgb(203, 165, 163); -webkit-box-  
shadow:4px 4px 4px 4px rgb(203, 165, 163);  
box-shadow:4px 4px 4px 4px rgb(203, 165,  
163) }
```

Background

The CSS property to change the background color of an element to RGB 203, 165, 163 is called "background". The background property can be set on classes, ids or directly on the HTML element.

```
.background, #background, body{  
background: rgb(203, 165, 163) }
```

If only the background color should be changed can be used:

```
.background{ background-color: rgb(203,  
165, 163) }
```

This example shows the color as background, it is applied via the CSS property "background".

To optimize and compress your CSS code, you can use our [online CSS compressor and optimizer](#) based on csstidy. If you want to create a linear or radial gradient as background or border, check our [CSS Gradient Generator](#).

Hey! You found this booklet interesting? Support Converting Colors with the new Membership Option!

The pro membership hides all ads, plus gives you double the colors in the color bucket, and more awesome pro features!

[Learn more, Memberships starting at \\$2.50/m!](#)

**Follow me
on Twitter!**

@ConvertingColor