

Converting Colors

RGB(204, 139, 128)

Have a look what the booklet for
RGB(204, 139, 128) contains.

RGB(204, 139, 128)	3
<i>Conversions</i>	4
<i>Details</i>	6
<i>Harmonies</i>	11
<i>Previews</i>	23
<i>Color Blindness Simulation</i>	26
<i>CSS Examples</i>	29

Color

RGB(204, 139, 128)

Conversions

Conversions Part 1

Format	Color
Hex	CC8B80
RGB	204, 139, 128
RGB Percent	80%, 55%, 50%
CMY	0.2000, 0.4549, 0.4980
CMYK	0.00, 0.32, 0.37, 0.20
HSL	9°, 43%, 65%
HSV	9°, 37%, 80%
XYZ	38.0307, 32.8611, 24.7605
YIQ	157.1810, 42.2710, 10.3590

Conversions

Conversions Part 2

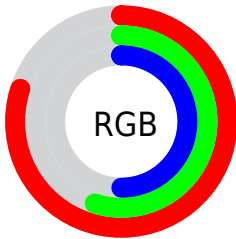
Format	Color
RYB	204, 141, 128
Decimal	13405056
CIELab	64.05, 23.41, 15.94
CIELCh	64, 28.317, 34.253
Yxy	32.8611, 0.3976, 0.3435
Android (android.graphics.Color)	4291595136 (0xFFCC8B80)
YUV	157.1810, -14.3862, 41.0603
Hunter-Lab	57.3246, 18.1038, 14.5179

Details

The RGB color **204, 139, 128** is a light color, and the websafe version is hex **CC9999**. A complement of this color would be **128, 193, 204**, and the grayscale version is **157, 157, 157**.

A 20% lighter version of the original color is **255, 193, 181**, and **148, 88, 79** is the 20% darker color. If you saturate the color by 10%, you get **204, 122, 108**, and if you desaturate by 10%, it is **204, 156, 148**.

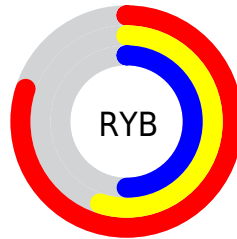
Distribution



Red (80%)

Green (55%)

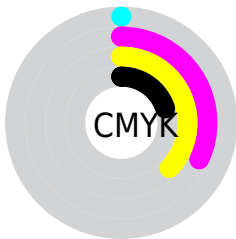
Blue (50%)



Red (80%)

Yellow (55%)

Blue (50%)

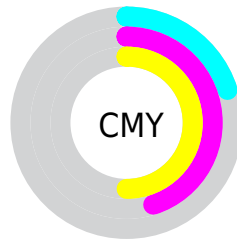


Cyan (0%)

Magenta (32%)

Yellow (37%)

Black (20%)



Cyan (20%)

Magenta (45%)

Yellow (50%)

Brightness & Saturation Gradients

These gradients show how the RGB color 204, 139, 128 changes by changing the brightness by 10 percent. The first figure shows a shift by +10% for each color and the second figure -10%.

Similar to the brightness gradients but the following saturation gradients show a change of the RGB color 204, 139, 128 by changing the saturation by 10% instead.

 204, 139, 128

255, 255, 255

 255, 193, 181


 255, 221, 208

 255, 250, 237


 204, 139, 128

 176, 113, 103

 148, 88, 79


 121, 64, 56


 94, 41, 34

 68, 19, 13


 45, 0, 0


 0, 0, 0

 204, 139, 128

 204, 122, 108

 204, 139, 128

 204, 156, 148

 204, 104, 87

 204, 174, 169

 204, 87, 67

 204, 191, 189

 204, 69, 46

 204, 209, 210

 204, 52, 26

 204, 226, 230

 204, 34, 6

 204, 244, 250

 204, 30, 0

 204, 255, 255

Harmonies

Analogous

The Analogous color harmony consists of three colors that are next to each other on the color wheel.



204, 136, 152



204, 139, 128



191, 146, 110

Triad

The Triadic color harmony groups three colors that are evenly spaced from another and form a triangle on the color wheel.



204, 139, 128



113, 167, 132



127, 156, 205

Complementary

The Complementary color scheme is a pair of colors which are on the opposite of each other on the color wheel.



204, 139, 128



128, 193, 204

Split Complementary

Split-complementary colors differ from the complementary color scheme. The scheme consists of three colors, the original color and two neighbors of the complement color.



92, 164, 200



204, 139, 128



85, 169, 158

Square

The Square scheme is like the rectangle color scheme, but the four colors are evenly spaced on the color wheel.



204, 139, 128



142, 162, 113



73, 168, 183



163, 147, 197

Rectangle

The Rectangle color scheme consists of four colors that form a rectangle on the color wheel.



204, 139, 128



177, 152, 105



73, 168, 183



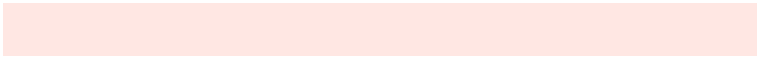
115, 159, 205

Sweetspot

The Sweet Spot groups the original color and five complimentary colors.



204, 139, 128



255, 231, 227



204, 128, 194



128, 113, 111



0, 0, 0



128, 128, 128

Same Dimension

The Same Dimension uses a secret algorithm to generate beautiful new colors.



204, 139, 128



255, 157, 140



204, 176, 128



102, 93, 92



166, 24, 0



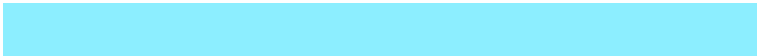
38, 6, 0

Inverse Universe

The Inverse Universe completely reimagines the original color for something new.



128, 193, 204



140, 238, 255



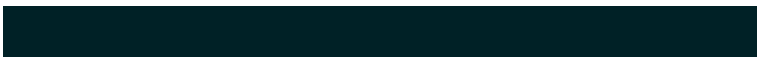
128, 156, 204



92, 101, 102



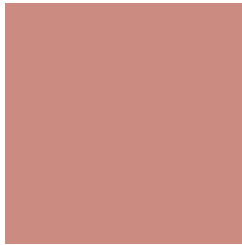
0, 142, 166



0, 33, 38

Previews

White Background



This preview shows how the RGB color 204, 139, 128 looks on a white background.

Color Contrast Check

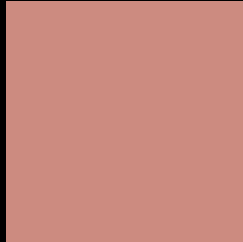
Large Text (above 18pt) WCAG AA × Fail

Any Text WCAG AA × Fail

Large Text (above 18pt) WCAG AAA × Fail

Any Text WCAG AAA × Fail

Black Background



This preview shows how the RGB color 204, 139, 128 looks on a black background.

Color Contrast Check

Large Text (above 18pt) WCAG AA ✓ Pass

Any Text WCAG AA ✓ Pass

Large Text (above 18pt) WCAG AAA ✓ Pass

Any Text WCAG AAA ✓ Pass

If you want to check with other color combinations, try the [Color Contrast Checker](#).

RGB 204, 139, 128 Background



This preview shows how black text looks on a background with the RGB color 204, 139, 128.



This preview shows how white text looks on a background with the RGB color 204, 139, 128.

Color Blindness Simulation

Color vision deficiency is a very complex topic, and I could not describe the different causes any better than Wikipedia does, so if you want to learn more, you should check out their [article about color blindness](#).

Dichromacy



Original Color
204, 139, 128

Protanopia
163, 155, 136

Deuteranopia
181, 149, 126



Tritanopia
206, 136, 147

Trichromacy



Original Color

204, 139, 128

Protanomaly

178, 149, 133

Deuteranomaly

189, 145, 127

Tritanomaly

205, 137, 140

Monochromacy



Original Color

204, 139, 128

Achromatopsia

157, 157, 157

Achromatomaly

174, 150, 146

CSS Examples

Text

The CSS property to change the color of the text to RGB 204, 139, 128 is called "color". The color property can be set on classes, ids or directly on the HTML element.

This example shows how text in the color `rgb(204, 139, 128)` looks like.

```
.text, #text, p{  
    color:rgb(204, 139, 128)  
}
```

If you want to add a text shadow in that color use the text-shadow property, you can generate a text shadow directly with our [CSS Text Shadow Generator](#).

Here you see how black text with a 4 pixel rgb(204, 139, 128) colored shadow looks like.

```
.shadow{ text-shadow: 4px 4px 2px rgb(204, 139, 128) }
```

Border

The CSS property to change the border of an element to RGB 204, 139, 128 is called "border". The border property can be set on classes, ids or directly on the HTML element.

This example shows the color as border, it can be applied via the CSS property "border" or "border-color".

```
.border, #border, table{ border:4px solid rgb(204, 139, 128) }
```

If only the border color should be changed use the property `border-color`.

```
.border{ border-color:rgb(204, 139, 128) }
```

If you want to add a box shadow in that color use:

Here you see how a box with a 4 pixel `rgb(204, 139, 128)` colored shadow looks like.

```
.boxshadow{ -moz-box-shadow:4px 4px 4px  
4px rgb(204, 139, 128); -webkit-box-  
shadow:4px 4px 4px 4px rgb(204, 139, 128);  
box-shadow:4px 4px 4px 4px rgb(204, 139,  
128) }
```

Background

The CSS property to change the background color of an element to RGB 204, 139, 128 is called "background". The background property can be set on classes, ids or directly on the HTML element.

```
.background, #background, body{  
background: rgb(204, 139, 128) }
```

If only the background color should be changed can be used:

```
.background{ background-color: rgb(204,  
139, 128) }
```

This example shows the color as background, it is applied via the CSS property "background".

To optimize and compress your CSS code, you can use our [online CSS compressor and optimizer](#) based on csstidy. If you want to create a linear or radial gradient as background or border, check our [CSS Gradient Generator](#).

Hey! You found this booklet interesting? Support Converting Colors with the new Membership Option!

The pro membership hides all ads, plus gives you double the colors in the color bucket, and more awesome pro features!

[Learn more, Memberships starting at \\$2.50/m!](#)

**Follow me
on Twitter!**

@ConvertingColor