

Converting Colors

RGB(204, 185, 178)

Have a look what the booklet for
RGB(204, 185, 178) contains.

RGB(204, 185, 178)	3
<i>Conversions</i>	4
<i>Details</i>	6
<i>Harmonies</i>	11
<i>Previews</i>	23
<i>Color Blindness Simulation</i>	26
<i>CSS Examples</i>	29

Color

RGB(204, 185, 178)

Conversions

Conversions Part 1

Format	Color
Hex	CCB9B2
RGB	204, 185, 178
RGB Percent	80%, 73%, 70%
CMY	0.2000, 0.2745, 0.3020
CMYK	0.00, 0.09, 0.13, 0.20
HSL	16°, 20%, 75%
HSV	16°, 13%, 80%
XYZ	50.2867, 50.7496, 49.2647
YIQ	189.8830, 13.5710, 1.8510

Conversions

Conversions Part 2

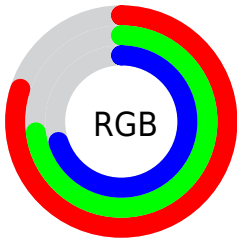
Format	Color
RYB	204, 188, 178
Decimal	13416882
CIELab	76.53, 5.57, 5.99
CIELCh	77, 8.181, 47.060
Yxy	50.7496, 0.3346, 0.3377
Android (android.graphics.Color)	4291606962 (0xFFCCB9B2)
YUV	189.8830, -5.8583, 12.3806
Hunter-Lab	71.2388, 1.3333, 8.8655

Details

The RGB color **204, 185, 178** is a light color, and the websafe version is hex **CCCCCC**. A complement of this color would be **178, 197, 204**, and the grayscale version is **190, 190, 190**.

A 20% lighter version of the original color is **255, 241, 234**, and **150, 132, 125** is the 20% darker color. If you saturate the color by 10%, you get **204, 170, 158**, and if you desaturate by 10%, it is **204, 200, 198**.

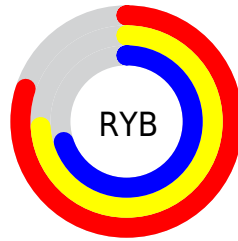
Distribution



Red (80%)

Green (73%)

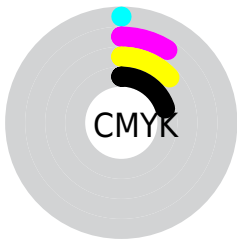
Blue (70%)



Red (80%)

Yellow (74%)

Blue (70%)

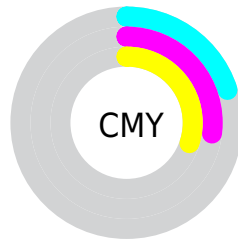


Cyan (0%)

Magenta (9%)

Yellow (13%)

Black (20%)



Cyan (20%)


Magenta (27%)

Yellow (30%)

Brightness & Saturation Gradients


These gradients show how the RGB color 204, 185, 178 changes by changing the brightness by 10 percent. The first figure shows a shift by +10% for each color and the second figure -10%.

Similar to the brightness gradients but the following saturation gradients show a change of the RGB color 204, 185, 178 by changing the saturation by 10% instead.

 204, 185, 178


255, 255, 255

 255, 241, 234

 204, 185, 178

 176, 158, 151

 150, 132, 125

 124, 107, 100

 99, 83, 77

 75, 60, 54


 52, 38, 33

 31, 17, 9

 0, 0, 0

 204, 185, 178

 204, 185, 178

 204, 170, 158


 204, 200, 198

 204, 155, 137


 204, 215, 219

 204, 140, 117

 204, 230, 239

 204, 125, 96

 204, 245, 255

 204, 110, 76

 204, 255, 255

 204, 96, 56

 204, 81, 35

 204, 66, 15

 204, 55, 0

Harmonies

Analogous

The Analogous color harmony consists of three colors that are next to each other on the color wheel.



205, 184, 185



204, 185, 178



199, 187, 174

Triad

The Triadic color harmony groups three colors that are evenly spaced from another and form a triangle on the color wheel.



204, 185, 178



174, 193, 185



186, 188, 203

Complementary

The Complementary color scheme is a pair of colors which are on the opposite of each other on the color wheel.



204, 185, 178



178, 197, 204

Split Complementary

Split-complementary colors differ from the complementary color scheme. The scheme consists of three colors, the original color and two neighbors of the complement color.



178, 190, 203



204, 185, 178



171, 193, 193

Square

The Square scheme is like the rectangle color scheme, but the four colors are evenly spaced on the color wheel.



204, 185, 178



182, 192, 178



172, 192, 200



196, 186, 199

Rectangle

The Rectangle color scheme consists of four colors that form a rectangle on the color wheel.



204, 185, 178



193, 189, 174



172, 192, 200



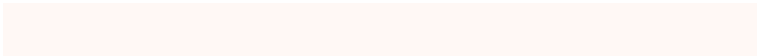
183, 189, 204

Sweetspot

The Sweet Spot groups the original color and five complimentary colors.



204, 185, 178



255, 248, 245



204, 178, 197



128, 123, 121



0, 0, 0



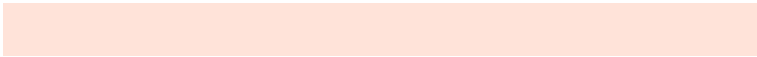
128, 128, 128

Same Dimension

The Same Dimension uses a secret algorithm to generate beautiful new colors.



204, 185, 178



255, 227, 217



204, 198, 178



102, 95, 92



166, 45, 0



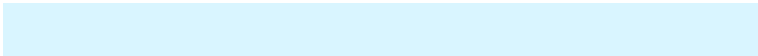
38, 10, 0

Inverse Universe

The Inverse Universe completely reimagines the original color for something new.



178, 197, 204



217, 245, 255



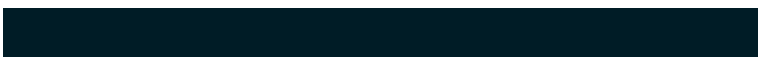
178, 184, 204



92, 99, 102



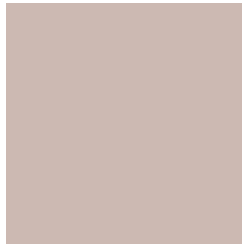
0, 121, 166



0, 28, 38

Previews

White Background



This preview shows how the RGB color 204, 185, 178 looks on a white background.

Color Contrast Check

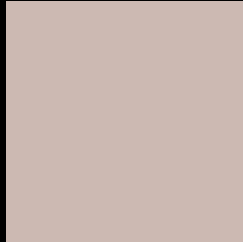
Large Text (above 18pt) WCAG AA × Fail

Any Text WCAG AA × Fail

Large Text (above 18pt) WCAG AAA × Fail

Any Text WCAG AAA × Fail

Black Background



This preview shows how the RGB color 204, 185, 178 looks on a black background.

Color Contrast Check

Large Text (above 18pt) WCAG AA ✓ Pass

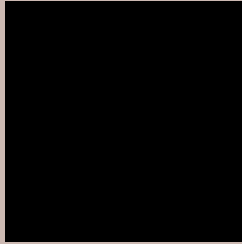
Any Text WCAG AA ✓ Pass

Large Text (above 18pt) WCAG AAA ✓ Pass

Any Text WCAG AAA ✓ Pass

If you want to check with other color combinations, try the [Color Contrast Checker](#).

RGB 204, 185, 178 Background



This preview shows how black text looks on a background with the RGB color 204, 185, 178.



This preview shows how white text looks on a background with the RGB color 204, 185, 178.

Color Blindness Simulation

Color vision deficiency is a very complex topic, and I could not describe the different causes any better than Wikipedia does, so if you want to learn more, you should check out their [article about color blindness](#).

Dichromacy



Original Color


204, 185, 178

Protanopia

194, 188, 180

Deuteranopia

211, 182, 179



Tritanopia
206, 182, 196

Trichromacy



Original Color

204, 185, 178

Protanomaly

198, 187, 179

Deuteranomaly

208, 183, 179

Tritanomaly

205, 183, 189

Monochromacy



Original Color

204, 185, 178

Achromatopsia

190, 190, 190

Achromatomaly

195, 188, 186

CSS Examples

Text

The CSS property to change the color of the text to RGB 204, 185, 178 is called "color". The color property can be set on classes, ids or directly on the HTML element.

This example shows how text in the color rgb(204, 185, 178) looks like.

```
.text, #text, p{  
    color:rgb(204, 185, 178)  
}
```

If you want to add a text shadow in that color use the text-shadow property, you can generate a text shadow directly with our [CSS Text Shadow Generator](#).

Here you see how black text with a 4 pixel rgb(204, 185, 178) colored shadow looks like.

```
.shadow{ text-shadow: 4px 4px 2px rgb(204, 185, 178) }
```

Border

The CSS property to change the border of an element to RGB 204, 185, 178 is called "border". The border property can be set on classes, ids or directly on the HTML element.

This example shows the color as border, it can be applied via the CSS property "border" or "border-color".

```
.border, #border, table{ border:4px solid rgb(204, 185, 178) }
```

If only the border color should be changed use the property `border-color`.

```
.border{ border-color:rgb(204, 185, 178) }
```

If you want to add a box shadow in that color use:

Here you see how a box with a 4 pixel `rgb(204, 185, 178)` colored shadow looks like.

```
.boxshadow{ -moz-box-shadow:4px 4px 4px  
4px rgb(204, 185, 178); -webkit-box-  
shadow:4px 4px 4px 4px rgb(204, 185, 178);  
box-shadow:4px 4px 4px 4px rgb(204, 185,  
178) }
```

Background

The CSS property to change the background color of an element to RGB 204, 185, 178 is called "background". The background property can be set on classes, ids or directly on the HTML element.

```
.background, #background, body{  
background: rgb(204, 185, 178) }
```

If only the background color should be changed can be used:

```
.background{ background-color: rgb(204,  
185, 178) }
```

This example shows the color as background, it is applied via the CSS property "background".

To optimize and compress your CSS code, you can use our [online CSS compressor and optimizer](#) based on csstidy. If you want to create a linear or radial gradient as background or border, check our [CSS Gradient Generator](#).

Hey! You found this booklet interesting? Support Converting Colors with the new Membership Option!

The pro membership hides all ads, plus gives you double the colors in the color bucket, and more awesome pro features!

[Learn more, Memberships starting at \\$2.50/m!](#)

**Follow me
on Twitter!**

@ConvertingColor