

Converting Colors

RGB(205, 155, 148)

Have a look what the booklet for
RGB(205, 155, 148) contains.

RGB(205, 155, 148)	3
<i>Conversions</i>	4
<i>Details</i>	6
<i>Harmonies</i>	11
<i>Previews</i>	23
<i>Color Blindness Simulation</i>	26
<i>CSS Examples</i>	29

Color

RGB(205, 155, 148)

Conversions

Conversions Part 1

Format	Color
Hex	CD9B94
RGB	205, 155, 148
RGB Percent	80%, 61%, 58%
CMY	0.1961, 0.3922, 0.4196
CMYK	0.00, 0.24, 0.28, 0.20
HSL	7°, 36%, 69%
HSV	7°, 28%, 80%
XYZ	42.2435, 38.5599, 33.2333
YIQ	169.1520, 32.0470, 8.4230

Conversions

Conversions Part 2

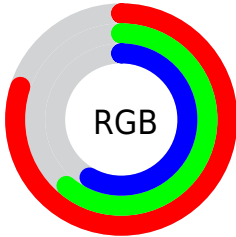
Format	Color
RYB	205, 156, 148
Decimal	13474708
CIELab	68.43, 17.64, 10.91
CIELCh	68, 20.746, 31.735
Yxy	38.5599, 0.3704, 0.3381
Android (android.graphics.Color)	4291664788 (0xFFCD9B94)
YUV	169.1520, -10.4279, 31.4387
Hunter-Lab	62.0967, 12.7619, 11.7364

Details

The RGB color **205, 155, 148** is a light color, and the websafe version is hex **CC9999**. A complement of this color would be **148, 198, 205**, and the grayscale version is **169, 169, 169**.

A 20% lighter version of the original color is **255, 210, 202**, and **150, 104, 97** is the 20% darker color. If you saturate the color by 10%, you get **205, 137, 128**, and if you desaturate by 10%, it is **205, 173, 169**.

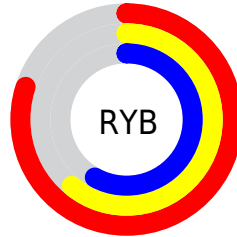
Distribution



Red (80%)

Green (61%)

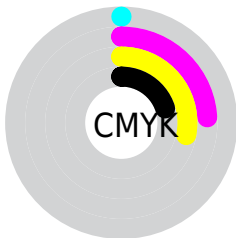
Blue (58%)



Red (80%)

Yellow (61%)

Blue (58%)

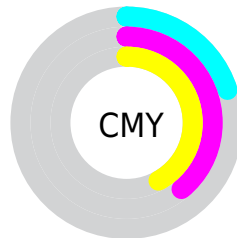


Cyan (0%)

Magenta (24%)

Yellow (28%)

Black (20%)



Cyan (20%)

Magenta (39%)

Yellow (42%)

Brightness & Saturation Gradients


These gradients show how the RGB color 205, 155, 148 changes by changing the brightness by 10 percent. The first figure shows a shift by +10% for each color and the second figure -10%.

Similar to the brightness gradients but the following saturation gradients show a change of the RGB color 205, 155, 148 by changing the saturation by 10% instead.

 205, 155, 148

 205, 155, 148

255, 255, 255

 177, 129, 122

 255, 210, 202

 150, 104, 97

 255, 238, 230

 123, 79, 74

 97, 56, 51

 72, 34, 30

 49, 13, 5

 23, 0, 0


 0, 0, 0

 205, 155, 148


 205, 155, 148

 205, 137, 128

 205, 173, 169

 205, 119, 107

 205, 191, 189

 205, 101, 87

 205, 209, 210

 205, 83, 66

 205, 227, 230

 205, 65, 46

 205, 245, 251

 205, 47, 25

 205, 255, 255

 205, 29, 5

 205, 25, 0

Harmonies

Analogous

The Analogous color harmony consists of three colors that are next to each other on the color wheel.



204, 154, 166



205, 155, 148



196, 160, 134

Triad

The Triadic color harmony groups three colors that are evenly spaced from another and form a triangle on the color wheel.



205, 155, 148



138, 176, 149



146, 168, 204

Complementary

The Complementary color scheme is a pair of colors which are on the opposite of each other on the color wheel.



205, 155, 148



148, 198, 205

Split Complementary

Split-complementary colors differ from the complementary color scheme. The scheme consists of three colors, the original color and two neighbors of the complement color.



124, 174, 199



205, 155, 148



121, 178, 167

Square

The Square scheme is like the rectangle color scheme, but the four colors are evenly spaced on the color wheel.



205, 155, 148



160, 172, 135



115, 177, 186



172, 162, 199

Rectangle

The Rectangle color scheme consists of four colors that form a rectangle on the color wheel.



205, 155, 148



186, 164, 130



115, 177, 186



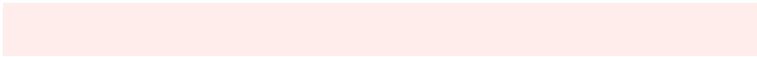
138, 170, 204

Sweetspot

The Sweet Spot groups the original color and five complimentary colors.



205, 155, 148



255, 237, 235



205, 148, 198



128, 116, 115



0, 0, 0



128, 128, 128

Same Dimension

The Same Dimension uses a secret algorithm to generate beautiful new colors.



205, 155, 148



255, 181, 171



205, 183, 148



102, 93, 92



166, 20, 0



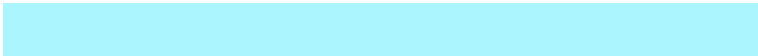
38, 5, 0

Inverse Universe

The Inverse Universe completely reimagines the original color for something new.



148, 198, 205



171, 245, 255



148, 170, 205



92, 101, 102



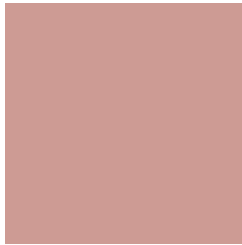
0, 145, 166



0, 34, 38

Previews

White Background



This preview shows how the RGB color 205, 155, 148 looks on a white background.

Color Contrast Check

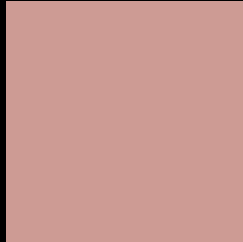
Large Text (above 18pt) WCAG AA × Fail

Any Text WCAG AA × Fail

Large Text (above 18pt) WCAG AAA × Fail

Any Text WCAG AAA × Fail

Black Background



This preview shows how the RGB color 205, 155, 148 looks on a black background.

Color Contrast Check

Large Text (above 18pt) WCAG AA ✓ Pass

Any Text WCAG AA ✓ Pass

Large Text (above 18pt) WCAG AAA ✓ Pass

Any Text WCAG AAA ✓ Pass

If you want to check with other color combinations, try the [Color Contrast Checker](#).

RGB 205, 155, 148 Background



This preview shows how black text looks on a background with the RGB color 205, 155, 148.



This preview shows how white text looks on a background with the RGB color 205, 155, 148.

Color Blindness Simulation

Color vision deficiency is a very complex topic, and I could not describe the different causes any better than Wikipedia does, so if you want to learn more, you should check out their [article about color blindness](#).

Dichromacy



Original Color
205, 155, 148

Protanopia
173, 167, 154

Deuteranopia
191, 161, 147



Tritanopia
207, 153, 164

Trichromacy



Original Color
205, 155, 148

Protanomaly
185, 163, 152

Deuteranomaly
196, 159, 147

Tritanomaly
206, 154, 158

Monochromacy



Original Color
205, 155, 148

Achromatopsia
169, 169, 169

Achromatomaly
182, 164, 161

CSS Examples

Text

The CSS property to change the color of the text to RGB 205, 155, 148 is called "color". The color property can be set on classes, ids or directly on the HTML element.

This example shows how text in the color rgb(205, 155, 148) looks like.

```
.text, #text, p{  
    color:rgb(205, 155, 148)  
}
```

If you want to add a text shadow in that color use the text-shadow property, you can generate a text shadow directly with our [CSS Text Shadow Generator](#).

Here you see how black text with a 4 pixel rgb(205, 155, 148) colored shadow looks like.

```
.shadow{ text-shadow: 4px 4px 2px rgb(205, 155, 148) }
```

Border

The CSS property to change the border of an element to RGB 205, 155, 148 is called "border". The border property can be set on classes, ids or directly on the HTML element.

This example shows the color as border, it can be applied via the CSS property "border" or "border-color".

```
.border, #border, table{ border:4px solid rgb(205, 155, 148) }
```

If only the border color should be changed use the property `border-color`.

```
.border{ border-color:rgb(205, 155, 148) }
```

If you want to add a box shadow in that color use:

Here you see how a box with a 4 pixel `rgb(205, 155, 148)` colored shadow looks like.

```
.boxshadow{ -moz-box-shadow:4px 4px 4px  
4px rgb(205, 155, 148); -webkit-box-  
shadow:4px 4px 4px 4px rgb(205, 155, 148);  
box-shadow:4px 4px 4px 4px rgb(205, 155,  
148) }
```

Background

The CSS property to change the background color of an element to RGB 205, 155, 148 is called "background". The background property can be set on classes, ids or directly on the HTML element.

```
.background, #background, body{  
background: rgb(205, 155, 148) }
```

If only the background color should be changed can be used:

```
.background{ background-color: rgb(205,  
155, 148) }
```

This example shows the color as background, it is applied via the CSS property "background".

To optimize and compress your CSS code, you can use our [online CSS compressor and optimizer](#) based on csstidy. If you want to create a linear or radial gradient as background or border, check our [CSS Gradient Generator](#).

Hey! You found this booklet interesting? Support Converting Colors with the new Membership Option!

The pro membership hides all ads, plus gives you double the colors in the color bucket, and more awesome pro features!

[Learn more, Memberships starting at \\$2.50/m!](#)

**Follow me
on Twitter!**

@ConvertingColor