

Converting Colors

RGB(207, 105, 147)

Have a look what the booklet for
RGB(207, 105, 147) contains.

RGB(207, 105, 147)	3
<i>Conversions</i>	4
<i>Details</i>	6
<i>Harmonies</i>	11
<i>Previews</i>	23
<i>Color Blindness Simulation</i>	26
<i>CSS Examples</i>	29

Color

RGB(207, 105, 147)

Conversions

Conversions Part 1

Format	Color
Hex	CF6993
RGB	207, 105, 147
RGB Percent	81%, 41%, 58%
CMY	0.1882, 0.5882, 0.4235
CMYK	0.00, 0.49, 0.29, 0.19
HSL	335°, 52%, 61%
HSV	335°, 49%, 81%
XYZ	36.0502, 25.4751, 30.6209
YIQ	140.2860, 47.3100, 34.6860

Conversions

Conversions Part 2

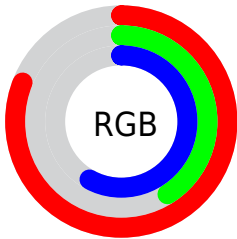
Format	Color
R _Y B	207, 105, 147
Decimal	13592979
CIE Lab	57.54, 44.97, -4.25
CIE LCh	58, 45.168, 354.603
Yxy	25.4751, 0.3912, 0.2765
Android (android.graphics.Color)	4291783059 (0xFFCF6993)
YUV	140.2860, 3.3100, 58.5082
Hunter-Lab	50.4729, 39.1657, -0.6390

Details

The RGB color **207, 105, 147** is a light color, and the websafe version is hex **CC6699**. A complement of this color would be **105, 207, 165**, and the grayscale version is **140, 140, 140**.

A 20% lighter version of the original color is **255, 159, 201**, and **150, 53, 97** is the 20% darker color. If you saturate the color by 10%, you get **207, 84, 135**, and if you desaturate by 10%, it is **207, 126, 159**.

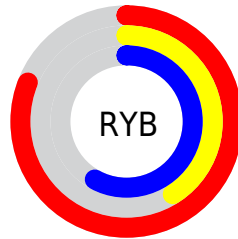
Distribution



Red (81%)

Green (41%)

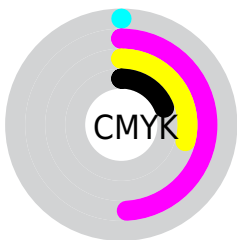
Blue (58%)



Red (81%)

Yellow (41%)

Blue (58%)

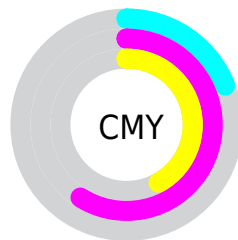


Cyan (0%)

Magenta (49%)

Yellow (29%)

Black (19%)



Cyan (19%)

Magenta (59%)

Yellow (42%)

Brightness & Saturation Gradients

These gradients show how the RGB color 207, 105, 147 changes by changing the brightness by 10 percent. The first figure shows a shift by +10% for each color and the second figure -10%.

Similar to the brightness gradients but the following saturation gradients show a change of the RGB color 207, 105, 147 by changing the saturation by 10% instead.

 207, 105, 147


255, 255, 255


 255, 159, 201

 255, 187, 229

 255, 215, 255

 255, 244, 255

 207, 105, 147

 178, 79, 121

 150, 53, 97

 122, 24, 73

 95, 0, 50


 68, 0, 29

 46, 0, 2

 0, 0, 0

 207, 105, 147

 207, 84, 135

 207, 105, 147

 207, 126, 159

■ 207, 64, 123

■ 207, 146, 171

■ 207, 43, 110

■ 207, 167, 184

■ 207, 22, 98

■ 207, 188, 196

■ 207, 1, 86

■ 207, 209, 208

■ 207, 0, 85

■ 207, 229, 220

■ 207, 250, 232

■ 207, 255, 244

■ 207, 255, 255

Harmonies

Analogous

The Analogous color harmony consists of three colors that are next to each other on the color wheel.



180, 115, 184



207, 105, 147



211, 107, 108

Triad

The Triadic color harmony groups three colors that are evenly spaced from another and form a triangle on the color wheel.



207, 105, 147



129, 146, 63



0, 154, 202

Complementary

The Complementary color scheme is a pair of colors which are on the opposite of each other on the color wheel.



207, 105, 147



105, 207, 165

Split Complementary

Split-complementary colors differ from the complementary color scheme. The scheme consists of three colors, the original color and two neighbors of the complement color.



0, 158, 170



207, 105, 147



80, 154, 91

Square

The Square scheme is like the rectangle color scheme, but the four colors are evenly spaced on the color wheel.



207, 105, 147



167, 134, 57



0, 158, 129



37, 145, 216

Rectangle

The Rectangle color scheme consists of four colors that form a rectangle on the color wheel.



207, 105, 147



203, 114, 84



0, 158, 129



0, 156, 193

Sweetspot

The Sweet Spot groups the original color and five complimentary colors.



207, 105, 147



255, 217, 233



164, 105, 207



128, 105, 114



0, 0, 0



128, 128, 128

Same Dimension

The Same Dimension uses a secret algorithm to generate beautiful new colors.



207, 105, 147



255, 105, 167



207, 114, 105



105, 94, 98



168, 0, 69



41, 0, 17

Inverse Universe

The Inverse Universe completely reimagines the original color for something new.



207, 105, 147



255, 105, 167



105, 199, 207



105, 94, 98



168, 0, 69



41, 0, 17

Previews

White Background



This preview shows how the RGB color 207, 105, 147 looks on a white background.

Color Contrast Check

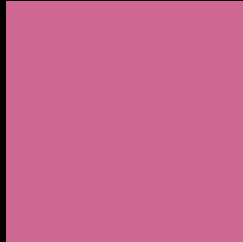
Large Text (above 18pt) WCAG AA ✓ Pass

Any Text WCAG AA ✗ Fail

Large Text (above 18pt) WCAG AAA ✗ Fail

Any Text WCAG AAA ✗ Fail

Black Background



This preview shows how the RGB color 207, 105, 147 looks on a black background.

Color Contrast Check

Large Text (above 18pt) WCAG AA ✓ Pass

Any Text WCAG AA ✓ Pass

Large Text (above 18pt) WCAG AAA ✓ Pass

Any Text WCAG AAA × Fail

If you want to check with other color combinations, try the [Color Contrast Checker](#).

RGB 207, 105, 147 Background



This preview shows how black text looks on a background with the RGB color 207, 105, 147.

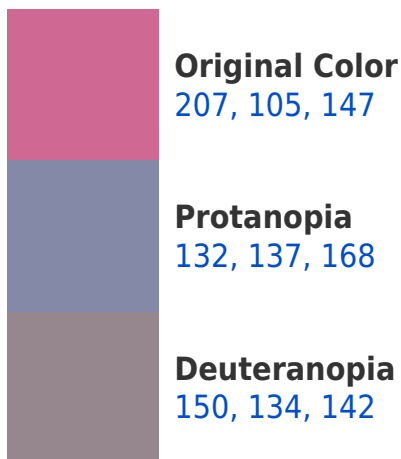


This preview shows how white text looks on a background with the RGB color 207, 105, 147.

Color Blindness Simulation

Color vision deficiency is a very complex topic, and I could not describe the different causes any better than Wikipedia does, so if you want to learn more, you should check out their [article about color blindness](#).

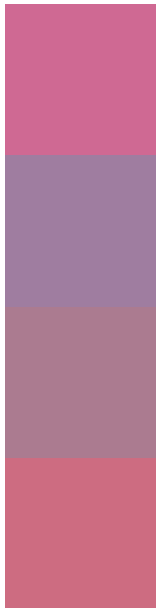
Dichromacy





Tritanopia
204, 110, 118

Trichromacy



Original Color
207, 105, 147

Protanomaly
159, 125, 160

Deuteranomaly
171, 123, 144

Tritanomaly
205, 108, 129

Monochromacy



Original Color
207, 105, 147

Achromatopsia
140, 140, 140

Achromatomaly
164, 127, 143

CSS Examples

Text

The CSS property to change the color of the text to RGB 207, 105, 147 is called "color". The color property can be set on classes, ids or directly on the HTML element.

This example shows how text in the color `rgb(207, 105, 147)` looks like.

```
.text, #text, p{  
    color:rgb(207, 105, 147)  
}
```

If you want to add a text shadow in that color use the text-shadow property, you can generate a text shadow directly with our [CSS Text Shadow Generator](#).

Here you see how black text with a 4 pixel rgb(207, 105, 147) colored shadow looks like.

```
.shadow{ text-shadow: 4px 4px 2px rgb(207, 105, 147) }
```

Border

The CSS property to change the border of an element to RGB 207, 105, 147 is called "border". The border property can be set on classes, ids or directly on the HTML element.

This example shows the color as border, it can be applied via the CSS property "border" or "border-color".

```
.border, #border, table{ border:4px solid rgb(207, 105, 147) }
```

If only the border color should be changed use the property `border-color`.

```
.border{ border-color:rgb(207, 105, 147) }
```

If you want to add a box shadow in that color use:

Here you see how a box with a 4 pixel `rgb(207, 105, 147)` colored shadow looks like.

```
.boxshadow{ -moz-box-shadow:4px 4px 4px 4px rgb(207, 105, 147); -webkit-box-shadow:4px 4px 4px 4px rgb(207, 105, 147); box-shadow:4px 4px 4px 4px rgb(207, 105, 147) }
```

Background

The CSS property to change the background color of an element to RGB 207, 105, 147 is called "background". The background property can be set on classes, ids or directly on the HTML element.

```
.background, #background, body{  
background: rgb(207, 105, 147) }
```

If only the background color should be changed can be used:

```
.background{ background-color: rgb(207,  
105, 147) }
```

This example shows the color as background, it is applied via the CSS property "background".

To optimize and compress your CSS code, you can use our [online CSS compressor and optimizer](#) based on csstidy. If you want to create a linear or radial gradient as background or border, check our [CSS Gradient Generator](#).

Hey! You found this booklet interesting? Support Converting Colors with the new Membership Option!

The pro membership hides all ads, plus gives you double the colors in the color bucket, and more awesome pro features!

[Learn more, Memberships starting at \\$2.50/m!](#)

**Follow me
on Twitter!**

@ConvertingColor