

Converting Colors

RGB(207, 158, 157)

Have a look what the booklet for
RGB(207, 158, 157) contains.

RGB(207, 158, 157)	3
<i>Conversions</i>	4
<i>Details</i>	6
<i>Harmonies</i>	11
<i>Previews</i>	23
<i>Color Blindness Simulation</i>	26
<i>CSS Examples</i>	29

Color

RGB(207, 158, 157)

Conversions

Conversions Part 1

Format	Color
Hex	CF9E9D
RGB	207, 158, 157
RGB Percent	81%, 62%, 62%
CMY	0.1882, 0.3804, 0.3843
CMYK	0.00, 0.24, 0.24, 0.19
HSL	1°, 34%, 71%
HSV	1°, 24%, 81%
XYZ	44.0448, 40.1534, 37.3273
YIQ	172.5370, 29.5250, 10.0770

Conversions

Conversions Part 2

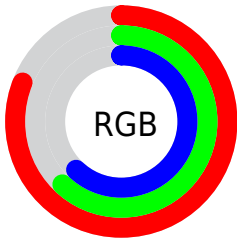
Format	Color
R _Y B	207, 158, 157
Decimal	13606557
CIE Lab	69.58, 18.05, 7.57
CIE LCh	70, 19.572, 22.767
Yxy	40.1534, 0.3624, 0.3304
Android (android.graphics.Color)	4291796637 (0xFFCF9E9D)
YUV	172.5370, -7.6597, 30.2241
Hunter-Lab	63.3667, 13.1795, 9.4309

Details

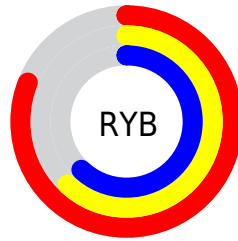
The RGB color **207, 158, 157** is a light color, and the websafe version is hex **CC9999**. A complement of this color would be **157, 206, 207**, and the grayscale version is **173, 173, 173**.

A 20% lighter version of the original color is **255, 213, 212**, and **152, 106, 106** is the 20% darker color. If you saturate the color by 10%, you get **207, 138, 136**, and if you desaturate by 10%, it is **207, 178, 178**.

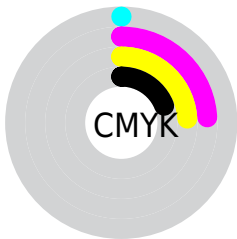
Distribution



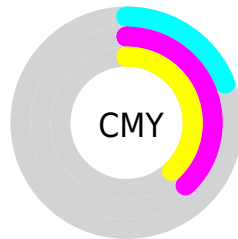
- Red (81%)
- Green (62%)
- Blue (62%)



- Red (81%)
- Yellow (62%)
- Blue (62%)



- Cyan (0%)
- Magenta (24%)
- Yellow (24%)
- Black (19%)




- Cyan (19%)
- Magenta (38%)
- Yellow (38%)

Brightness & Saturation Gradients

These gradients show how the RGB color 207, 158, 157 changes by changing the brightness by 10 percent. The first figure shows a shift by +10% for each color and the second figure -10%.

Similar to the brightness gradients but the following saturation gradients show a change of the RGB color 207, 158, 157 by changing the saturation by 10% instead.


 207, 158, 157

 207, 158, 157

255, 255, 255


 179, 132, 131

 255, 213, 212


 152, 106, 106

 255, 241, 240

 125, 82, 82

 99, 59, 59

 74, 36, 37

 50, 15, 16

 30, 0, 1


 0, 0, 0

 207, 158, 157

 207, 158, 157

 207, 138, 136

 207, 178, 178

 207, 117, 116

 207, 199, 198

 207, 97, 95

 207, 219, 219

 207, 77, 74

 207, 239, 240

 207, 57, 54

 207, 255, 255

 207, 36, 33

 207, 16, 12

 207, 4, 0

Harmonies

Analogous

The Analogous color harmony consists of three colors that are next to each other on the color wheel.



203, 158, 175



207, 158, 157



201, 162, 142

Triad

The Triadic color harmony groups three colors that are evenly spaced from another and form a triangle on the color wheel.



207, 158, 157



149, 178, 148



144, 173, 205

Complementary

The Complementary color scheme is a pair of colors which are on the opposite of each other on the color wheel.



207, 158, 157



157, 206, 207

Split Complementary

Split-complementary colors differ from the complementary color scheme. The scheme consists of three colors, the original color and two neighbors of the complement color.



126, 178, 198



207, 158, 157



131, 180, 165

Square

The Square scheme is like the rectangle color scheme, but the four colors are evenly spaced on the color wheel.



207, 158, 157



169, 173, 137



122, 180, 183



168, 167, 203

Rectangle

The Rectangle color scheme consists of four colors that form a rectangle on the color wheel.



207, 158, 157



193, 165, 136



122, 180, 183



137, 175, 203

Sweetspot

The Sweet Spot groups the original color and five complimentary colors.



207, 158, 157



255, 238, 237



207, 157, 206



128, 118, 117



0, 0, 0



128, 128, 128

Same Dimension

The Same Dimension uses a secret algorithm to generate beautiful new colors.



207, 158, 157



255, 183, 181



207, 183, 157



105, 94, 94



168, 3, 0



41, 1, 0

Inverse Universe

The Inverse Universe completely reimagines the original color for something new.



157, 206, 207



181, 254, 255



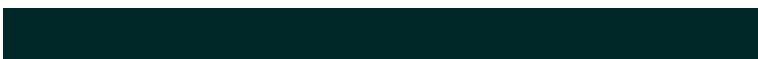
157, 181, 207



94, 104, 105



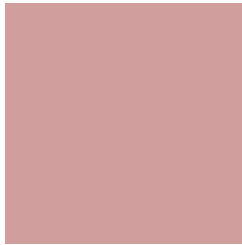
0, 165, 168



0, 40, 41

Previews

White Background



This preview shows how the RGB color 207, 158, 157 looks on a white background.

Color Contrast Check

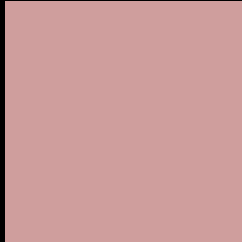
Large Text (above 18pt) WCAG AA × Fail

Any Text WCAG AA × Fail

Large Text (above 18pt) WCAG AAA × Fail

Any Text WCAG AAA × Fail

Black Background



This preview shows how the RGB color 207, 158, 157 looks on a black background.

Color Contrast Check

Large Text (above 18pt) WCAG AA ✓ Pass

Any Text WCAG AA ✓ Pass

Large Text (above 18pt) WCAG AAA ✓ Pass

Any Text WCAG AAA ✓ Pass

If you want to check with other color combinations, try the [Color Contrast Checker](#).

RGB 207, 158, 157 Background



This preview shows how black text looks on a background with the RGB color 207, 158, 157.



This preview shows how white text looks on a background with the RGB color 207, 158, 157.

Color Blindness Simulation

Color vision deficiency is a very complex topic, and I could not describe the different causes any better than Wikipedia does, so if you want to learn more, you should check out their [article about color blindness](#).

Dichromacy



Original Color
207, 158, 157

Protanopia
175, 170, 163

Deuteranopia
192, 164, 156



Tritanopia
208, 156, 168

Trichromacy



Original Color

207, 158, 157

Protanomaly

187, 166, 161

Deuteranomaly

197, 162, 156

Tritanomaly

208, 157, 164

Monochromacy



Original Color

207, 158, 157

Achromatopsia

173, 173, 173

Achromatomaly

185, 168, 167

CSS Examples

Text

The CSS property to change the color of the text to RGB 207, 158, 157 is called "color". The color property can be set on classes, ids or directly on the HTML element.

This example shows how text in the color rgb(207, 158, 157) looks like.

```
.text, #text, p{  
    color:rgb(207, 158, 157)  
}
```

If you want to add a text shadow in that color use the text-shadow property, you can generate a text shadow directly with our [CSS Text Shadow Generator](#).

Here you see how black text with a 4 pixel rgb(207, 158, 157) colored shadow looks like.

```
.shadow{ text-shadow: 4px 4px 2px rgb(207, 158, 157) }
```

Border

The CSS property to change the border of an element to RGB 207, 158, 157 is called "border". The border property can be set on classes, ids or directly on the HTML element.

This example shows the color as border, it can be applied via the CSS property "border" or "border-color".

```
.border, #border, table{ border:4px solid rgb(207, 158, 157) }
```

If only the border color should be changed use the property `border-color`.

```
.border{ border-color:rgb(207, 158, 157) }
```

If you want to add a box shadow in that color use:

Here you see how a box with a 4 pixel `rgb(207, 158, 157)` colored shadow looks like.

```
.boxshadow{ -moz-box-shadow:4px 4px 4px 4px rgb(207, 158, 157); -webkit-box-shadow:4px 4px 4px 4px rgb(207, 158, 157); box-shadow:4px 4px 4px 4px rgb(207, 158, 157) }
```

Background

The CSS property to change the background color of an element to RGB 207, 158, 157 is called "background". The background property can be set on classes, ids or directly on the HTML element.

```
.background, #background, body{  
background: rgb(207, 158, 157) }
```

If only the background color should be changed can be used:

```
.background{ background-color: rgb(207,  
158, 157) }
```

This example shows the color as background, it is applied via the CSS property "background".

To optimize and compress your CSS code, you can use our [online CSS compressor and optimizer](#) based on csstidy. If you want to create a linear or radial gradient as background or border, check our [CSS Gradient Generator](#).

Hey! You found this booklet interesting? Support Converting Colors with the new Membership Option!

The pro membership hides all ads, plus gives you double the colors in the color bucket, and more awesome pro features!

[Learn more, Memberships starting at \\$2.50/m!](#)

**Follow me
on Twitter!**

@ConvertingColor