

# Converting Colors

RGB(207, 166, 128)

Have a look what the booklet for  
RGB(207, 166, 128) contains.

<b>RGB(207, 166, 128)</b> .....	3
<i><b>Conversions</b></i> .....	4
<i><b>Details</b></i> .....	6
<i><b>Harmonies</b></i> .....	11
<i><b>Previews</b></i> .....	23
<i><b>Color Blindness Simulation</b></i> .....	26
<i><b>CSS Examples</b></i> .....	29

# **Color**

**RGB(207, 166, 128)**

# Conversions

## Conversions Part 1

<b>Format</b>	<b>Color</b>
Hex	CFA680
RGB	207, 166, 128
RGB Percent	81%, 65%, 50%
CMY	0.1882, 0.3490, 0.4980
CMYK	0.00, 0.20, 0.38, 0.19
HSL	29°, 45%, 66%
HSV	29°, 38%, 81%
XYZ	43.2646, 42.0963, 26.2672
YIQ	173.9270, 36.6340, -3.1260

# Conversions

## Conversions Part 2

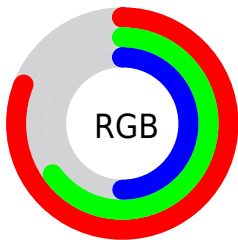
Format	Color
<a href="#">RYB</a>	<a href="#">207, 201, 128</a>
Decimal	<a href="#">13608576</a>
CIELab	<a href="#">70.94, 9.89, 25.39</a>
CIElCh	<a href="#">71, 27.248, 68.711</a>
Yxy	<a href="#">42.0963, 0.3876, 0.3771</a>
Android (android.graphics.Color)	<a href="#">4291798656 (0xFFCFA680)</a>
YUV	<a href="#">173.9270, -22.6420, 29.0050</a>
Hunter-Lab	<a href="#">64.8817, 5.4850, 21.4138</a>

# Details

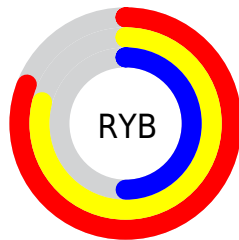
The RGB color **207, 166, 128** is a light color, and the websafe version is hex **CC9966**. A complement of this color would be **128, 169, 207**, and the grayscale version is **174, 174, 174**.

A 20% lighter version of the original color is **255, 221, 181**, and **151, 114, 78** is the 20% darker color. If you saturate the color by 10%, you get **207, 155, 107**, and if you desaturate by 10%, it is **207, 177, 149**.

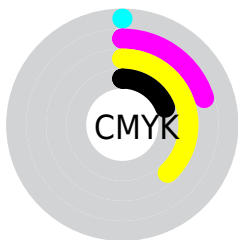
# Distribution



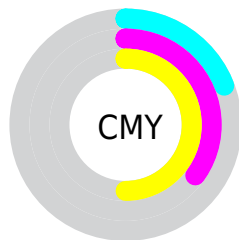
- Red (81%)
- Green (65%)
- Blue (50%)



- Red (81%)
- Yellow (79%)
- Blue (50%)



- Cyan (0%)
- Magenta (20%)
- Yellow (38%)
- Black (19%)



- Cyan (19%)
- Magenta (35%)
- Yellow (50%)

# Brightness & Saturation Gradients

These gradients show how the RGB color 207, 166, 128 changes by changing the brightness by 10 percent. The first figure shows a shift by +10% for each color and the second figure -10%.

Similar to the brightness gradients but the following saturation gradients show a change of the RGB color 207, 166, 128 by changing the saturation by 10% instead.




 207, 166, 128

 207, 166, 128

255, 255, 255

 179, 140, 103

 255, 221, 181

 151, 114, 78

 255, 250, 209

 124, 90, 55

 255, 255, 237

 98, 66, 33

 73, 44, 11

 48, 23, 0

 25, 0, 0

 0, 0, 0

 207, 166, 128

 207, 166, 128

 207, 155, 107

 207, 177, 149

 207, 145, 87

 207, 187, 169

 207, 134, 66

 207, 198, 190

 207, 123, 45

 207, 209, 211

 207, 112, 24

 207, 220, 232

 207, 102, 4

 207, 230, 252

 207, 100, 0

 207, 241, 255

 207, 252, 255

 207, 255, 255

# Harmonies

## Analogous

The Analogous color harmony consists of three colors that are next to each other on the color wheel.



221, 159, 144



207, 166, 128



184, 174, 124

# Triad

The Triadic color harmony groups three colors that are evenly spaced from another and form a triangle on the color wheel.



207, 166, 128



105, 188, 180



187, 165, 212

# Complementary

The Complementary color scheme is a pair of colors which are on the opposite of each other on the color wheel.



207, 166, 128



128, 169, 207

# Split Complementary

Split-complementary colors differ from the complementary color scheme. The scheme consists of three colors, the original color and two neighbors of the complement color.



153, 173, 222



207, 166, 128



99, 186, 204

# Square

The Square scheme is like the rectangle color scheme, but the four colors are evenly spaced on the color wheel.



207, 166, 128



128, 186, 155



119, 181, 219



211, 158, 192

# Rectangle

The Rectangle color scheme consists of four colors that form a rectangle on the color wheel.



207, 166, 128



166, 179, 130



119, 181, 219



176, 168, 217



# Sweetspot

The Sweet Spot groups the original color and five complimentary colors.



207, 166, 128



255, 240, 227



207, 128, 170



128, 119, 111



0, 0, 0



128, 128, 128



# Same Dimension

The Same Dimension uses a secret algorithm to generate beautiful new colors.



207, 166, 128



255, 194, 138



207, 204, 128



105, 99, 94



168, 81, 0



41, 20, 0

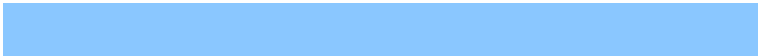


# Inverse Universe

The Inverse Universe completely reimagines the original color for something new.



128, 169, 207



138, 199, 255



128, 131, 207



94, 100, 105



0, 87, 168



0, 21, 41



# Previews

## White Background



This preview shows how the RGB color 207, 166, 128 looks on a white background.

## Color Contrast Check

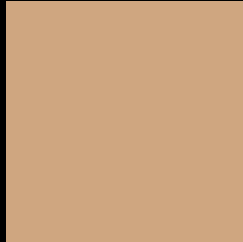
Large Text (above 18pt) WCAG AA × Fail

Any Text WCAG AA × Fail

Large Text (above 18pt) WCAG AAA × Fail

Any Text WCAG AAA × Fail

# Black Background



This preview shows how the RGB color 207, 166, 128 looks on a black background.

## Color Contrast Check

Large Text (above 18pt) WCAG AA ✓ Pass

Any Text WCAG AA ✓ Pass

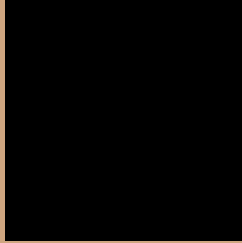
Large Text (above 18pt) WCAG AAA ✓ Pass

Any Text WCAG AAA ✓ Pass

If you want to check with other color combinations, try the [Color Contrast Checker](#).



## RGB 207, 166, 128 Background



This preview shows how black text looks on a background with the RGB color 207, 166, 128.



This preview shows how white text looks on a background with the RGB color 207, 166, 128.

# Color Blindness Simulation

Color vision deficiency is a very complex topic, and I could not describe the different causes any better than Wikipedia does, so if you want to learn more, you should check out their [article about color blindness](#).

## Dichromacy



**Original Color**  
207, 166, 128

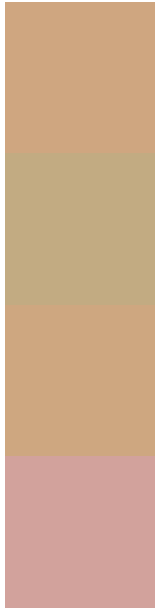
**Protanopia**  
186, 174, 131

**Deuteranopia**  
206, 167, 128



**Tritanopia**  
212, 160, 172

# Trichromacy



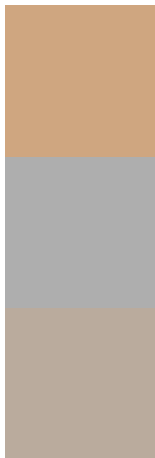
**Original Color**  
207, 166, 128

**Protanomaly**  
194, 171, 130

**Deuteranomaly**  
206, 167, 128

**Tritanomaly**  
210, 162, 156

# Monochromacy



**Original Color**  
207, 166, 128

**Achromatopsia**  
174, 174, 174

**Achromatomaly**  
186, 171, 157

# CSS Examples

## Text

The CSS property to change the color of the text to RGB 207, 166, 128 is called "color". The color property can be set on classes, ids or directly on the HTML element.

This example shows how text in the color `rgb(207, 166, 128)` looks like.

```
.text, #text, p{  
    color:rgb(207, 166, 128)  
}
```

If you want to add a text shadow in that color use the text-shadow property, you can generate a text shadow directly with our [CSS Text Shadow Generator](#).

Here you see how black text with a 4 pixel rgb(207, 166, 128) colored shadow looks like.

```
.shadow{ text-shadow: 4px 4px 2px rgb(207, 166, 128) }
```

## Border

The CSS property to change the border of an element to RGB 207, 166, 128 is called "border". The border property can be set on classes, ids or directly on the HTML element.

This example shows the color as border, it can be applied via the CSS property "border" or "border-color".

```
.border, #border, table{ border:4px solid rgb(207, 166, 128) }
```

If only the border color should be changed use the property `border-color`.

```
.border{ border-color:rgb(207, 166, 128) }
```

If you want to add a box shadow in that color use:

Here you see how a box with a 4 pixel `rgb(207, 166, 128)` colored shadow looks like.

```
.boxshadow{ -moz-box-shadow:4px 4px 4px 4px rgb(207, 166, 128); -webkit-box-shadow:4px 4px 4px 4px rgb(207, 166, 128); box-shadow:4px 4px 4px 4px rgb(207, 166, 128) }
```

# Background

The CSS property to change the background color of an element to RGB 207, 166, 128 is called "background". The background property can be set on classes, ids or directly on the HTML element.

```
.background, #background, body{  
background: rgb(207, 166, 128) }
```

If only the background color should be changed can be used:

```
.background{ background-color: rgb(207,  
166, 128) }
```

This example shows the color as background, it is applied via the CSS property "background".

To optimize and compress your CSS code, you can use our [online CSS compressor and optimizer](#) based on csstidy. If you want to create a linear or radial gradient as background or border, check our [CSS Gradient Generator](#).



Hey! You found this booklet interesting? Support Converting Colors with the new Membership Option!

The pro membership hides all ads, plus gives you double the colors in the color bucket, and more awesome pro features!

**[Learn more, Memberships starting at \\$2.50/m!](#)**

**Follow me  
on Twitter!**

@ConvertingColor