

Converting Colors

RGB(207, 174, 142)

Have a look what the booklet for
RGB(207, 174, 142) contains.

RGB(207, 174, 142)	3
<i>Conversions</i>	4
<i>Details</i>	6
<i>Harmonies</i>	11
<i>Previews</i>	23
<i>Color Blindness Simulation</i>	26
<i>CSS Examples</i>	29

Color

RGB(207, 174, 142)

Conversions

Conversions Part 1

Format	Color
Hex	CFAE8E
RGB	207, 174, 142
RGB Percent	81%, 68%, 56%
CMY	0.1882, 0.3176, 0.4431
CMYK	0.00, 0.16, 0.31, 0.19
HSL	30°, 40%, 68%
HSV	30°, 31%, 81%
XYZ	45.7507, 45.4905, 31.9604
YIQ	180.2190, 29.9400, -2.9560

Conversions

Conversions Part 2

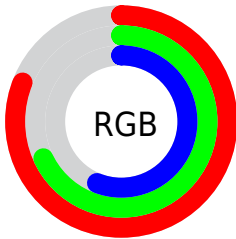
Format	Color
R_{YB}	207, 205, 142
Decimal	13610638
CIE _{Lab}	73.21, 7.31, 20.90
CIE _{LCh}	73, 22.142, 70.719
Yxy	45.4905, 0.3713, 0.3692
Android (android.graphics.Color)	4291800718 (0xFFCFAE8E)
YUV	180.2190, -18.8420, 23.4869
Hunter-Lab	67.4466, 3.0492, 19.1174

Details

The RGB color **207, 174, 142** is a light color, and the websafe version is hex **CC9966**. A complement of this color would be **142, 175, 207**, and the grayscale version is **180, 180, 180**.

A 20% lighter version of the original color is **255, 229, 196**, and **152, 122, 92** is the 20% darker color. If you saturate the color by 10%, you get **207, 163, 121**, and if you desaturate by 10%, it is **207, 185, 163**.

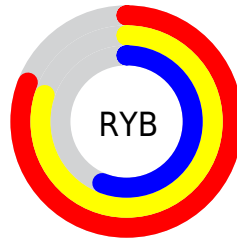
Distribution



Red (81%)

Green (68%)

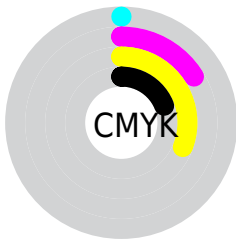
Blue (56%)



Red (81%)

Yellow (80%)

Blue (56%)

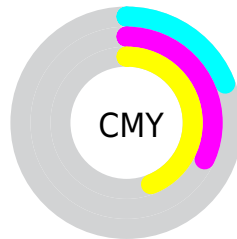


Cyan (0%)

Magenta (16%)

Yellow (31%)

Black (19%)



Cyan (19%)

Magenta (32%)

Yellow (44%)

Brightness & Saturation Gradients

These gradients show how the RGB color 207, 174, 142 changes by changing the brightness by 10 percent. The first figure shows a shift by +10% for each color and the second figure -10%.

Similar to the brightness gradients but the following saturation gradients show a change of the RGB color 207, 174, 142 by changing the saturation by 10% instead.

 207, 174, 142

 207, 174, 142

255, 255, 255

 179, 147, 116

 255, 229, 196

 152, 122, 92

 255, 255, 224

 125, 97, 68

 255, 255, 252

 99, 73, 45

 74, 51, 24


 51, 29, 0

 27, 5, 0

 0, 0, 0

 207, 174, 142

 207, 174, 142

 207, 163, 121

 207, 185, 163

 207, 153, 101

 207, 195, 183

 207, 142, 80

 207, 206, 204

 207, 132, 59

 207, 216, 225

 207, 121, 39

 207, 227, 245

 207, 111, 18

 207, 237, 255

 207, 102, 0

 207, 248, 255

 207, 255, 255

Harmonies

Analogous

The Analogous color harmony consists of three colors that are next to each other on the color wheel.



219, 168, 154



207, 174, 142



188, 181, 140

Triad

The Triadic color harmony groups three colors that are evenly spaced from another and form a triangle on the color wheel.



207, 174, 142



126, 191, 187



192, 172, 211

Complementary

The Complementary color scheme is a pair of colors which are on the opposite of each other on the color wheel.



207, 174, 142



142, 175, 207

Split Complementary

Split-complementary colors differ from the complementary color scheme. The scheme consists of three colors, the original color and two neighbors of the complement color.



166, 179, 219



207, 174, 142



124, 190, 205

Square

The Square scheme is like the rectangle color scheme, but the four colors are evenly spaced on the color wheel.



207, 174, 142



142, 190, 166



140, 185, 217



212, 167, 194

Rectangle

The Rectangle color scheme consists of four colors that form a rectangle on the color wheel.



207, 174, 142



173, 185, 145



140, 185, 217



184, 174, 215

Sweetspot

The Sweet Spot groups the original color and five complimentary colors.



207, 174, 142



255, 243, 232



207, 142, 176



128, 120, 113



0, 0, 0



128, 128, 128

Same Dimension

The Same Dimension uses a secret algorithm to generate beautiful new colors.



207, 174, 142



255, 206, 158



207, 206, 142



105, 99, 94



168, 83, 0



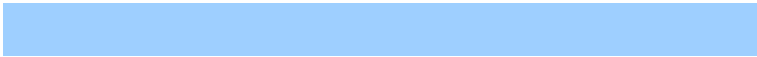
41, 20, 0

Inverse Universe

The Inverse Universe completely reimagines the original color for something new.



142, 175, 207



158, 207, 255



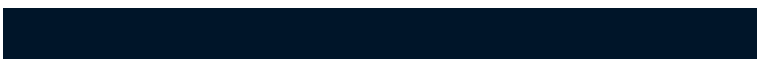
142, 143, 207



94, 99, 105



0, 85, 168



0, 21, 41

Previews

White Background



This preview shows how the RGB color 207, 174, 142 looks on a white background.

Color Contrast Check

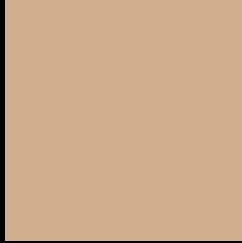
Large Text (above 18pt) WCAG AA × Fail

Any Text WCAG AA × Fail

Large Text (above 18pt) WCAG AAA × Fail

Any Text WCAG AAA × Fail

Black Background



This preview shows how the RGB color 207, 174, 142 looks on a black background.

Color Contrast Check

Large Text (above 18pt) WCAG AA ✓ Pass

Any Text WCAG AA ✓ Pass

Large Text (above 18pt) WCAG AAA ✓ Pass

Any Text WCAG AAA ✓ Pass

If you want to check with other color combinations, try the [Color Contrast Checker](#).

RGB 207, 174, 142 Background



This preview shows how black text looks on a background with the RGB color 207, 174, 142.



This preview shows how white text looks on a background with the RGB color 207, 174, 142.

Color Blindness Simulation

Color vision deficiency is a very complex topic, and I could not describe the different causes any better than Wikipedia does, so if you want to learn more, you should check out their [article about color blindness](#).


Dichromacy



Original Color
207, 174, 142

Protanopia
191, 180, 145

Deuteranopia
210, 173, 142



Tritanopia
211, 169, 182

Trichromacy



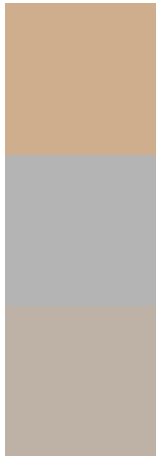
Original Color
207, 174, 142

Protanomaly
197, 178, 144

Deuteranomaly
209, 173, 142

Tritanomaly
210, 171, 167

Monochromacy



Original Color
207, 174, 142

Achromatopsia
180, 180, 180

Achromatomaly
190, 178, 166

CSS Examples

Text

The CSS property to change the color of the text to RGB 207, 174, 142 is called "color". The color property can be set on classes, ids or directly on the HTML element.

This example shows how text in the color `rgb(207, 174, 142)` looks like.

```
.text, #text, p{  
    color:rgb(207, 174, 142)  
}
```

If you want to add a text shadow in that color use the text-shadow property, you can generate a text shadow directly with our [CSS Text Shadow Generator](#).

Here you see how black text with a 4 pixel rgb(207, 174, 142) colored shadow looks like.

```
.shadow{ text-shadow: 4px 4px 2px rgb(207, 174, 142) }
```

Border

The CSS property to change the border of an element to RGB 207, 174, 142 is called "border". The border property can be set on classes, ids or directly on the HTML element.

This example shows the color as border, it can be applied via the CSS property "border" or "border-color".

```
.border, #border, table{ border:4px solid rgb(207, 174, 142) }
```

If only the border color should be changed use the property `border-color`.

```
.border{ border-color:rgb(207, 174, 142) }
```

If you want to add a box shadow in that color use:

Here you see how a box with a 4 pixel `rgb(207, 174, 142)` colored shadow looks like.

```
.boxshadow{ -moz-box-shadow:4px 4px 4px  
4px rgb(207, 174, 142); -webkit-box-  
shadow:4px 4px 4px 4px rgb(207, 174, 142);  
box-shadow:4px 4px 4px 4px rgb(207, 174,  
142) }
```

Background

The CSS property to change the background color of an element to RGB 207, 174, 142 is called "background". The background property can be set on classes, ids or directly on the HTML element.

```
.background, #background, body{  
background: rgb(207, 174, 142) }
```

If only the background color should be changed can be used:

```
.background{ background-color: rgb(207,  
174, 142) }
```

This example shows the color as background, it is applied via the CSS property "background".

To optimize and compress your CSS code, you can use our [online CSS compressor and optimizer](#) based on csstidy. If you want to create a linear or radial gradient as background or border, check our [CSS Gradient Generator](#).

Hey! You found this booklet interesting? Support Converting Colors with the new Membership Option!

The pro membership hides all ads, plus gives you double the colors in the color bucket, and more awesome pro features!

[Learn more, Memberships starting at \\$2.50/m!](#)

**Follow me
on Twitter!**

@ConvertingColor