

Converting Colors

RGB(208, 170, 175)

Have a look what the booklet for
RGB(208, 170, 175) contains.

RGB(208, 170, 175)	3
<i>Conversions</i>	4
<i>Details</i>	6
<i>Harmonies</i>	11
<i>Previews</i>	23
<i>Color Blindness Simulation</i>	26
<i>CSS Examples</i>	29

Color

RGB(208, 170, 175)

Conversions

Conversions Part 1

Format	Color
Hex	D0AAAF
RGB	208, 170, 175
RGB Percent	82%, 67%, 69%
CMY	0.1843, 0.3333, 0.3137
CMYK	0.00, 0.18, 0.16, 0.18
HSL	352°, 29%, 74%
HSV	352°, 18%, 82%
XYZ	48.1250, 45.2545, 46.7560
YIQ	181.9320, 21.0430, 9.6110

Conversions

Conversions Part 2

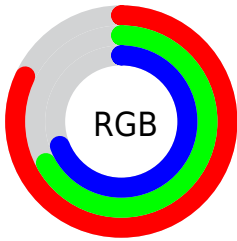
Format	Color
R _{YB}	208, 170, 175
Decimal	13675183
CIE _{Lab}	73.06, 14.64, 2.66
CIE _{LCh}	73, 14.882, 10.304
Yxy	45.2545, 0.3434, 0.3229
Android (android.graphics.Color)	4291865263 (0xFFD0AAAF)
YUV	181.9320, -3.4175, 22.8616
Hunter-Lab	67.2715, 9.9712, 5.8814

Details

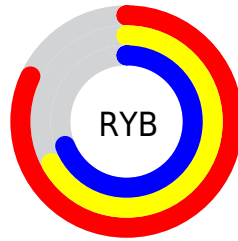
The RGB color **208, 170, 175** is a light color, and the websafe version is hex **CC9999**. A complement of this color would be **170, 208, 203**, and the grayscale version is **182, 182, 182**.

A 20% lighter version of the original color is **255, 225, 230**, and **153, 118, 123** is the 20% darker color. If you saturate the color by 10%, you get **208, 149, 157**, and if you desaturate by 10%, it is **208, 191, 193**.

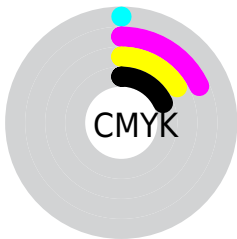
Distribution



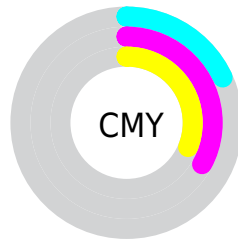
- Red (82%)
- Green (67%)
- Blue (69%)



- Red (82%)
- Yellow (67%)
- Blue (69%)



- Cyan (0%)
- Magenta (18%)
- Yellow (16%)
- Black (18%)



- Cyan (18%)
- Magenta (33%)
- Yellow (31%)

Brightness & Saturation Gradients

These gradients show how the RGB color 208, 170, 175 changes by changing the brightness by 10 percent. The first figure shows a shift by +10% for each color and the second figure -10%.

Similar to the brightness gradients but the following saturation gradients show a change of the RGB color 208, 170, 175 by changing the saturation by 10% instead.


 208, 170, 175

 208, 170, 175

255, 255, 255


 180, 143, 148

 255, 225, 230

 153, 118, 123

255, 254, 255

 127, 93, 98

 101, 69, 74

 77, 47, 52

 53, 25, 30

 34, 0, 5

 0, 0, 0

 208, 170, 175

 208, 170, 175

 208, 149, 157


 208, 191, 193

 208, 128, 139

 208, 212, 211

 208, 108, 121

 208, 232, 229

 208, 87, 103

 208, 253, 247

 208, 66, 85

 208, 255, 255

 208, 45, 67

 208, 24, 49

 208, 4, 30

 208, 0, 27

Harmonies

Analogous

The Analogous color harmony consists of three colors that are next to each other on the color wheel.



201, 171, 189



208, 170, 175



207, 172, 162

Triad

The Triadic color harmony groups three colors that are evenly spaced from another and form a triangle on the color wheel.



208, 170, 175



170, 184, 158



154, 183, 205

Complementary

The Complementary color scheme is a pair of colors which are on the opposite of each other on the color wheel.



208, 170, 175



170, 208, 203

Split Complementary

Split-complementary colors differ from the complementary color scheme. The scheme consists of three colors, the original color and two neighbors of the complement color.



145, 186, 196



208, 170, 175



155, 187, 170

Square

The Square scheme is like the rectangle color scheme, but the four colors are evenly spaced on the color wheel.



208, 170, 175



185, 180, 153



146, 187, 184



170, 179, 206

Rectangle

The Rectangle color scheme consists of four colors that form a rectangle on the color wheel.



208, 170, 175



202, 174, 156



146, 187, 184



150, 184, 203

Sweetspot

The Sweet Spot groups the original color and five complimentary colors.



208, 170, 175



255, 242, 244



203, 170, 208



128, 120, 121



0, 0, 0



128, 128, 128

Same Dimension

The Same Dimension uses a secret algorithm to generate beautiful new colors.



208, 170, 175



255, 199, 206



208, 184, 170



105, 94, 95



168, 0, 22



41, 0, 5

Inverse Universe

The Inverse Universe completely reimagines the original color for something new.



208, 170, 175



255, 199, 206



170, 194, 208



105, 94, 95



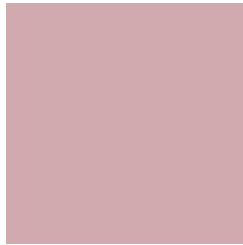
168, 0, 22



41, 0, 5

Previews

White Background



This preview shows how the RGB color 208, 170, 175 looks on a white background.

Color Contrast Check

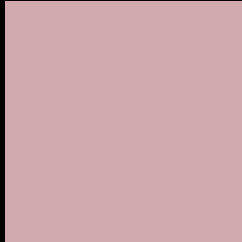
Large Text (above 18pt) WCAG AA × Fail

Any Text WCAG AA × Fail

Large Text (above 18pt) WCAG AAA × Fail

Any Text WCAG AAA × Fail

Black Background



This preview shows how the RGB color 208, 170, 175 looks on a black background.

Color Contrast Check

Large Text (above 18pt) WCAG AA ✓ Pass

Any Text WCAG AA ✓ Pass

Large Text (above 18pt) WCAG AAA ✓ Pass

Any Text WCAG AAA ✓ Pass

If you want to check with other color combinations, try the [Color Contrast Checker](#).

RGB 208, 170, 175 Background



This preview shows how black text looks on a background with the RGB color 208, 170, 175.



This preview shows how white text looks on a background with the RGB color 208, 170, 175.

Color Blindness Simulation

Color vision deficiency is a very complex topic, and I could not describe the different causes any better than Wikipedia does, so if you want to learn more, you should check out their [article about color blindness](#).

Dichromacy



Original Color
208, 170, 175

Protanopia
182, 179, 180

Deuteranopia
199, 174, 174



Tritanopia
209, 169, 182

Trichromacy



Original Color

208, 170, 175

Protanomaly

191, 176, 178

Deuteranomaly

202, 173, 174

Tritanomaly

209, 169, 179

Monochromacy



Original Color

208, 170, 175

Achromatopsia

182, 182, 182

Achromatomaly

191, 178, 179

CSS Examples

Text

The CSS property to change the color of the text to RGB 208, 170, 175 is called "color". The color property can be set on classes, ids or directly on the HTML element.

This example shows how text in the color rgb(208, 170, 175) looks like.

```
.text, #text, p{  
    color:rgb(208, 170, 175)  
}
```

If you want to add a text shadow in that color use the text-shadow property, you can generate a text shadow directly with our [CSS Text Shadow Generator](#).

Here you see how black text with a 4 pixel rgb(208, 170, 175) colored shadow looks like.

```
.shadow{ text-shadow: 4px 4px 2px rgb(208, 170, 175) }
```

Border

The CSS property to change the border of an element to RGB 208, 170, 175 is called "border". The border property can be set on classes, ids or directly on the HTML element.

This example shows the color as border, it can be applied via the CSS property "border" or "border-color".

```
.border, #border, table{ border:4px solid rgb(208, 170, 175) }
```

If only the border color should be changed use the property `border-color`.

```
.border{ border-color:rgb(208, 170, 175) }
```

If you want to add a box shadow in that color use:

Here you see how a box with a 4 pixel `rgb(208, 170, 175)` colored shadow looks like.

```
.boxshadow{ -moz-box-shadow:4px 4px 4px  
4px rgb(208, 170, 175); -webkit-box-  
shadow:4px 4px 4px 4px rgb(208, 170, 175);  
box-shadow:4px 4px 4px 4px rgb(208, 170,  
175) }
```

Background

The CSS property to change the background color of an element to RGB 208, 170, 175 is called "background". The background property can be set on classes, ids or directly on the HTML element.

```
.background, #background, body{  
background: rgb(208, 170, 175) }
```

If only the background color should be changed can be used:

```
.background{ background-color: rgb(208,  
170, 175) }
```

This example shows the color as background, it is applied via the CSS property "background".

To optimize and compress your CSS code, you can use our [online CSS compressor and optimizer](#) based on csstidy. If you want to create a linear or radial gradient as background or border, check our [CSS Gradient Generator](#).

Hey! You found this booklet interesting? Support Converting Colors with the new Membership Option!

The pro membership hides all ads, plus gives you double the colors in the color bucket, and more awesome pro features!

[Learn more, Memberships starting at \\$2.50/m!](#)

**Follow me
on Twitter!**

@ConvertingColor