

Converting Colors

RGB(208, 179, 179)

Have a look what the booklet for
RGB(208, 179, 179) contains.

RGB(208, 179, 179)	3
<i>Conversions</i>	4
<i>Details</i>	6
<i>Harmonies</i>	11
<i>Previews</i>	23
<i>Color Blindness Simulation</i>	26
<i>CSS Examples</i>	29

Color

RGB(208, 179, 179)

Conversions

Conversions Part 1

Format	Color
Hex	D0B3B3
RGB	208, 179, 179
RGB Percent	82%, 70%, 70%
CMY	0.1843, 0.2980, 0.2980
CMYK	0.00, 0.14, 0.14, 0.18
HSL	0°, 24%, 76%
HSV	0°, 14%, 82%
XYZ	50.2692, 48.9048, 49.4379
YIQ	187.6710, 17.2840, 6.1480

Conversions

Conversions Part 2

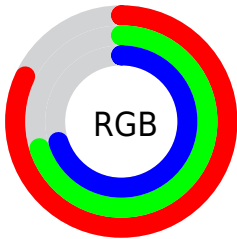
Format	Color
R _Y B	208, 179, 179
Decimal	13677491
CIE Lab	75.39, 10.42, 3.85
CIE LCh	75, 11.109, 20.292
Yxy	48.9048, 0.3383, 0.3291
Android (android.graphics.Color)	4291867571 (0xFFD0B3B3)
YUV	187.6710, -4.2748, 17.8285
Hunter-Lab	69.9319, 5.9303, 7.0377

Details

The RGB color **208, 179, 179** is a light color, and the websafe version is hex **CC9999**. A complement of this color would be **179, 208, 208**, and the grayscale version is **188, 188, 188**.

A 20% lighter version of the original color is **255, 235, 235**, and **153, 126, 126** is the 20% darker color. If you saturate the color by 10%, you get **208, 158, 158**, and if you desaturate by 10%, it is **208, 200, 200**.

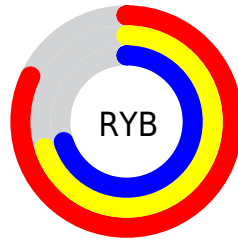
Distribution



Red (82%)

Green (70%)

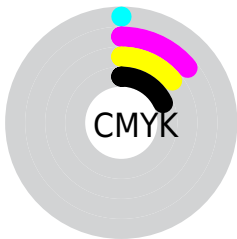
Blue (70%)



Red (82%)

Yellow (70%)

Blue (70%)

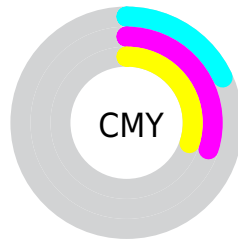


Cyan (0%)

Magenta (14%)

Yellow (14%)

Black (18%)



Cyan (18%)

Magenta (30%)

Yellow (30%)

Brightness & Saturation Gradients

These gradients show how the RGB color 208, 179, 179 changes by changing the brightness by 10 percent. The first figure shows a shift by +10% for each color and the second figure -10%.

Similar to the brightness gradients but the following saturation gradients show a change of the RGB color 208, 179, 179 by changing the saturation by 10% instead.

 208, 179, 179

 208, 179, 179

255, 255, 255

 180, 152, 152

 255, 235, 235

 153, 126, 126

 127, 101, 101

 102, 77, 77

 77, 54, 55

 54, 33, 33

 33, 11, 11


 0, 0, 0

 208, 179, 179

 208, 179, 179

 208, 158, 158

 208, 200, 200

 208, 137, 137

 208, 221, 221

 208, 117, 117

 208, 241, 241

 208, 96, 96

 208, 255, 255

 208, 75, 75

 208, 54, 54

 208, 33, 33

 208, 13, 13

 208, 0, 0

Harmonies

Analogous

The Analogous color harmony consists of three colors that are next to each other on the color wheel.



205, 179, 189



208, 179, 179



205, 181, 170

Triad

The Triadic color harmony groups three colors that are evenly spaced from another and form a triangle on the color wheel.



208, 179, 179



175, 190, 172



171, 188, 206

Complementary

The Complementary color scheme is a pair of colors which are on the opposite of each other on the color wheel.



208, 179, 179



179, 208, 208

Split Complementary

Split-complementary colors differ from the complementary color scheme. The scheme consists of three colors, the original color and two neighbors of the complement color.



162, 190, 201



208, 179, 179



165, 192, 182

Square

The Square scheme is like the rectangle color scheme, but the four colors are evenly spaced on the color wheel.



208, 179, 179



187, 187, 166



160, 192, 192



184, 184, 205

Rectangle

The Rectangle color scheme consists of four colors that form a rectangle on the color wheel.



208, 179, 179



201, 183, 167



160, 192, 192



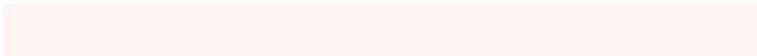
168, 189, 205

Sweetspot

The Sweet Spot groups the original color and five complimentary colors.



208, 179, 179



255, 245, 245



208, 179, 208



128, 121, 121



0, 0, 0



128, 128, 128

Same Dimension

The Same Dimension uses a secret algorithm to generate beautiful new colors.



208, 179, 179



255, 212, 212



208, 194, 179



105, 94, 94



168, 0, 0



41, 0, 0

Inverse Universe

The Inverse Universe completely reimagines the original color for something new.



179, 208, 208



212, 255, 255



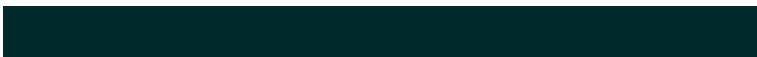
179, 194, 208



94, 105, 105



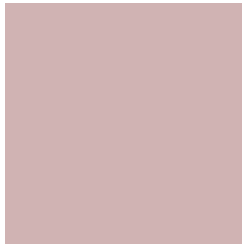
0, 168, 168



0, 41, 41

Previews

White Background



This preview shows how the RGB color 208, 179, 179 looks on a white background.

Color Contrast Check

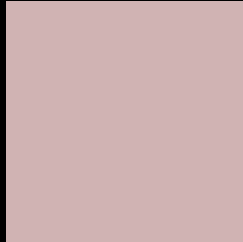
Large Text (above 18pt) WCAG AA × Fail

Any Text WCAG AA × Fail

Large Text (above 18pt) WCAG AAA × Fail

Any Text WCAG AAA × Fail

Black Background



This preview shows how the RGB color 208, 179, 179 looks on a black background.

Color Contrast Check

Large Text (above 18pt) WCAG AA ✓ Pass

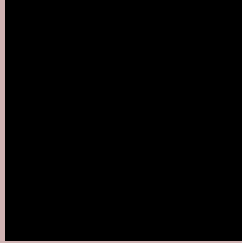
Any Text WCAG AA ✓ Pass

Large Text (above 18pt) WCAG AAA ✓ Pass

Any Text WCAG AAA ✓ Pass

If you want to check with other color combinations, try the [Color Contrast Checker](#).

RGB 208, 179, 179 Background



This preview shows how black text looks on a background with the RGB color 208, 179, 179.



This preview shows how white text looks on a background with the RGB color 208, 179, 179.

Color Blindness Simulation

Color vision deficiency is a very complex topic, and I could not describe the different causes any better than Wikipedia does, so if you want to learn more, you should check out their [article about color blindness](#).

Dichromacy



Original Color
208, 179, 179

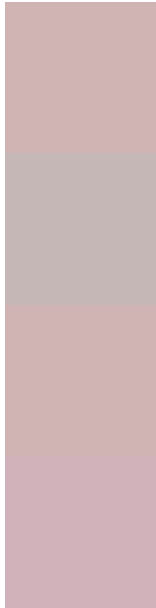
Protanopia
190, 185, 182

Deuteranopia
206, 180, 179



Tritanopia
210, 177, 191

Trichromacy



Original Color

208, 179, 179

Protanomaly

197, 183, 181

Deuteranomaly

207, 180, 179

Tritanomaly

209, 178, 187

Monochromacy



Original Color

208, 179, 179

Achromatopsia

188, 188, 188

Achromatomaly

195, 185, 185

CSS Examples

Text

The CSS property to change the color of the text to RGB 208, 179, 179 is called "color". The color property can be set on classes, ids or directly on the HTML element.

This example shows how text in the color `rgb(208, 179, 179)` looks like.

```
.text, #text, p{  
    color:rgb(208, 179, 179)  
}
```

If you want to add a text shadow in that color use the text-shadow property, you can generate a text shadow directly with our [CSS Text Shadow Generator](#).

Here you see how black text with a 4 pixel rgb(208, 179, 179) colored shadow looks like.

```
.shadow{ text-shadow: 4px 4px 2px rgb(208, 179, 179) }
```

Border

The CSS property to change the border of an element to RGB 208, 179, 179 is called "border". The border property can be set on classes, ids or directly on the HTML element.

This example shows the color as border, it can be applied via the CSS property "border" or "border-color".

```
.border, #border, table{ border:4px solid rgb(208, 179, 179) }
```

If only the border color should be changed use the property `border-color`.

```
.border{ border-color:rgb(208, 179, 179) }
```

If you want to add a box shadow in that color use:

Here you see how a box with a 4 pixel `rgb(208, 179, 179)` colored shadow looks like.

```
.boxshadow{ -moz-box-shadow:4px 4px 4px  
4px rgb(208, 179, 179); -webkit-box-  
shadow:4px 4px 4px 4px rgb(208, 179, 179);  
box-shadow:4px 4px 4px 4px rgb(208, 179,  
179) }
```

Background

The CSS property to change the background color of an element to RGB 208, 179, 179 is called "background". The background property can be set on classes, ids or directly on the HTML element.

```
.background, #background, body{  
background: rgb(208, 179, 179) }
```

If only the background color should be changed can be used:

```
.background{ background-color: rgb(208,  
179, 179) }
```

This example shows the color as background, it is applied via the CSS property "background".

To optimize and compress your CSS code, you can use our [online CSS compressor and optimizer](#) based on csstidy. If you want to create a linear or radial gradient as background or border, check our [CSS Gradient Generator](#).

Hey! You found this booklet interesting? Support Converting Colors with the new Membership Option!

The pro membership hides all ads, plus gives you double the colors in the color bucket, and more awesome pro features!

[Learn more, Memberships starting at \\$2.50/m!](#)

**Follow me
on Twitter!**

@ConvertingColor