

Converting Colors

RGB(209, 148, 148)

Have a look what the booklet for
RGB(209, 148, 148) contains.

RGB(209, 148, 148)	3
<i>Conversions</i>	4
<i>Details</i>	6
<i>Harmonies</i>	11
<i>Previews</i>	23
<i>Color Blindness Simulation</i>	26
<i>CSS Examples</i>	29

Color

RGB(209, 148, 148)

Conversions

Conversions Part 1

Format	Color
Hex	D19494
RGB	209, 148, 148
RGB Percent	82%, 58%, 58%
CMY	0.1804, 0.4196, 0.4196
CMYK	0.00, 0.29, 0.29, 0.18
HSL	0°, 40%, 70%
HSV	0°, 29%, 82%
XYZ	42.2297, 36.8732, 32.9085
YIQ	166.2390, 36.3560, 12.9320

Conversions

Conversions Part 2

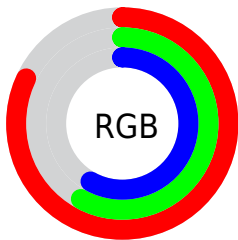
Format	Color
R _Y B	209, 148, 148
Decimal	13735060
CIE Lab	67.18, 22.99, 9.20
CIE LCh	67, 24.761, 21.808
Yxy	36.8732, 0.3770, 0.3292
Android (android.graphics.Color)	4291925140 (0xFFD19494)
YUV	166.2390, -8.9918, 37.5014
Hunter-Lab	60.7233, 17.8710, 10.3746

Details

The RGB color **209, 148, 148** is a light color, and the websafe version is hex **CC9999**. A complement of this color would be **148, 209, 209**, and the grayscale version is **166, 166, 166**.

A 20% lighter version of the original color is **255, 202, 202**, and **153, 97, 97** is the 20% darker color. If you saturate the color by 10%, you get **209, 127, 127**, and if you desaturate by 10%, it is **209, 169, 169**.

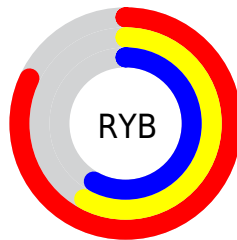
Distribution



Red (82%)

Green (58%)

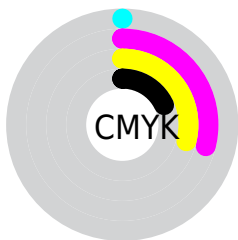
Blue (58%)



Red (82%)

Yellow (58%)

Blue (58%)

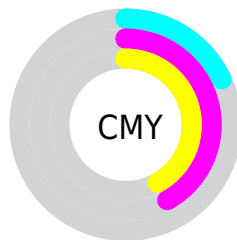


Cyan (0%)

Magenta (29%)

Yellow (29%)

Black (18%)



Cyan (18%)

Magenta (42%)

Yellow (42%)

Brightness & Saturation Gradients


These gradients show how the RGB color 209, 148, 148 changes by changing the brightness by 10 percent. The first figure shows a shift by +10% for each color and the second figure -10%.

Similar to the brightness gradients but the following saturation gradients show a change of the RGB color 209, 148, 148 by changing the saturation by 10% instead.

 209, 148, 148

 209, 148, 148

255, 255, 255

 181, 122, 122

 255, 202, 202

 153, 97, 97

 255, 231, 230

 126, 73, 74

 100, 49, 51

 74, 27, 30

 50, 4, 5

 23, 0, 0

 0, 0, 0

 209, 148, 148

 209, 148, 148

 209, 127, 127

 209, 169, 169

 209, 106, 106

 209, 190, 190

 209, 85, 85

 209, 211, 211

 209, 64, 64

 209, 232, 232

 209, 44, 44

 209, 253, 253

 209, 23, 23

 209, 255, 255

 209, 2, 2

 209, 0, 0

Harmonies

Analogous

The Analogous color harmony consists of three colors that are next to each other on the color wheel.



204, 148, 171



209, 148, 148



202, 153, 129

Triad

The Triadic color harmony groups three colors that are evenly spaced from another and form a triangle on the color wheel.



209, 148, 148



137, 173, 135



128, 167, 207

Complementary

The Complementary color scheme is a pair of colors which are on the opposite of each other on the color wheel.



209, 148, 148



148, 209, 209

Split Complementary

Split-complementary colors differ from the complementary color scheme. The scheme consists of three colors, the original color and two neighbors of the complement color.



103, 173, 198



209, 148, 148



113, 176, 156

Square

The Square scheme is like the rectangle color scheme, but the four colors are evenly spaced on the color wheel.



209, 148, 148



163, 167, 122



98, 176, 179



159, 160, 205

Rectangle

The Rectangle color scheme consists of four colors that form a rectangle on the color wheel.



209, 148, 148



192, 157, 122



98, 176, 179



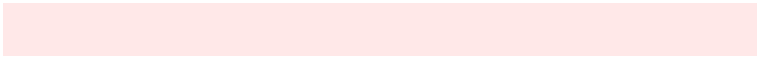
118, 170, 205

Sweetspot

The Sweet Spot groups the original color and five complimentary colors.



209, 148, 148



255, 232, 232



209, 148, 209



128, 113, 113



0, 0, 0



128, 128, 128

Same Dimension

The Same Dimension uses a secret algorithm to generate beautiful new colors.



209, 148, 148



255, 166, 166



209, 179, 148



105, 94, 94



168, 0, 0



41, 0, 0

Inverse Universe

The Inverse Universe completely reimagines the original color for something new.



148, 209, 209



166, 255, 255



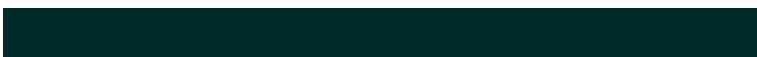
148, 179, 209



94, 105, 105



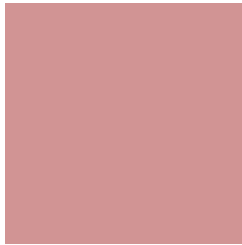
0, 168, 168



0, 41, 41

Previews

White Background



This preview shows how the RGB color 209, 148, 148 looks on a white background.

Color Contrast Check

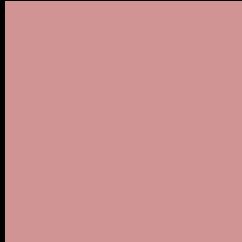
Large Text (above 18pt) WCAG AA × Fail

Any Text WCAG AA × Fail

Large Text (above 18pt) WCAG AAA × Fail

Any Text WCAG AAA × Fail

Black Background



This preview shows how the RGB color 209, 148, 148 looks on a black background.

Color Contrast Check

Large Text (above 18pt) WCAG AA ✓ Pass

Any Text WCAG AA ✓ Pass

Large Text (above 18pt) WCAG AAA ✓ Pass

Any Text WCAG AAA ✓ Pass

If you want to check with other color combinations, try the [Color Contrast Checker](#).

RGB 209, 148, 148 Background



This preview shows how black text looks on a background with the RGB color 209, 148, 148.

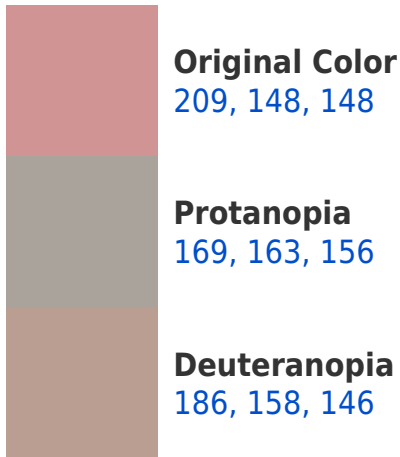


This preview shows how white text looks on a background with the RGB color 209, 148, 148.

Color Blindness Simulation

Color vision deficiency is a very complex topic, and I could not describe the different causes any better than Wikipedia does, so if you want to learn more, you should check out their [article about color blindness](#).

Dichromacy





Tritanopia
210, 146, 158

Trichromacy



Original Color

209, 148, 148

Protanomaly

184, 158, 153

Deuteranomaly

194, 154, 147

Tritanomaly

210, 147, 154

Monochromacy



Original Color

209, 148, 148

Achromatopsia

166, 166, 166

Achromatomaly

182, 159, 159

CSS Examples

Text

The CSS property to change the color of the text to RGB 209, 148, 148 is called "color". The color property can be set on classes, ids or directly on the HTML element.

This example shows how text in the color `rgb(209, 148, 148)` looks like.

```
.text, #text, p{  
    color:rgb(209, 148, 148)  
}
```

If you want to add a text shadow in that color use the text-shadow property, you can generate a text shadow directly with our [CSS Text Shadow Generator](#).

Here you see how black text with a 4 pixel rgb(209, 148, 148) colored shadow looks like.

```
.shadow{ text-shadow: 4px 4px 2px rgb(209, 148, 148) }
```

Border

The CSS property to change the border of an element to RGB 209, 148, 148 is called "border". The border property can be set on classes, ids or directly on the HTML element.

This example shows the color as border, it can be applied via the CSS property "border" or "border-color".

```
.border, #border, table{ border:4px solid rgb(209, 148, 148) }
```

If only the border color should be changed use the property `border-color`.

```
.border{ border-color:rgb(209, 148, 148) }
```

If you want to add a box shadow in that color use:

Here you see how a box with a 4 pixel `rgb(209, 148, 148)` colored shadow looks like.

```
.boxshadow{ -moz-box-shadow:4px 4px 4px  
4px rgb(209, 148, 148); -webkit-box-  
shadow:4px 4px 4px 4px rgb(209, 148, 148);  
box-shadow:4px 4px 4px 4px rgb(209, 148,  
148) }
```

Background

The CSS property to change the background color of an element to RGB 209, 148, 148 is called "background". The background property can be set on classes, ids or directly on the HTML element.

```
.background, #background, body{  
background: rgb(209, 148, 148) }
```

If only the background color should be changed can be used:

```
.background{ background-color: rgb(209,  
148, 148) }
```

This example shows the color as background, it is applied via the CSS property "background".

To optimize and compress your CSS code, you can use our [online CSS compressor and optimizer](#) based on csstidy. If you want to create a linear or radial gradient as background or border, check our [CSS Gradient Generator](#).

Hey! You found this booklet interesting? Support Converting Colors with the new Membership Option!

The pro membership hides all ads, plus gives you double the colors in the color bucket, and more awesome pro features!

[Learn more, Memberships starting at \\$2.50/m!](#)

**Follow me
on Twitter!**

@ConvertingColor