

# Converting Colors

RGB(209, 178, 175)

Have a look what the booklet for  
RGB(209, 178, 175) contains.

<b>RGB(209, 178, 175)</b> .....	3
<b><i>Conversions</i></b> .....	4
<b><i>Details</i></b> .....	6
<b><i>Harmonies</i></b> .....	11
<b><i>Previews</i></b> .....	23
<b><i>Color Blindness Simulation</i></b> .....	26
<b><i>CSS Examples</i></b> .....	29

# **Color**

**RGB(209, 178, 175)**

# Conversions

## Conversions Part 1

Format	Color
Hex	D1B2AF
RGB	209, 178, 175
RGB Percent	82%, 70%, 69%
CMY	0.1804, 0.3020, 0.3137
CMYK	0.00, 0.15, 0.16, 0.18
HSL	5°, 27%, 75%
HSV	5°, 16%, 82%
XYZ	49.9528, 48.4912, 47.2844
YIQ	186.9270, 19.4390, 5.6390

# Conversions

## Conversions Part 2

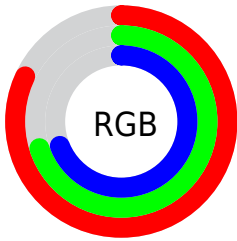
Format	Color
R <sub>Y</sub> B	209, 178, 175
Decimal	13742767
CIE Lab	75.13, 10.68, 5.67
CIE LCh	75, 12.095, 27.969
Yxy	48.4912, 0.3428, 0.3328
Android (android.graphics.Color)	4291932847 (0xFFD1B2AF)
YUV	186.9270, -5.8800, 19.3580
Hunter-Lab	69.6357, 6.1836, 8.4855

# Details

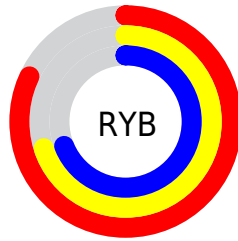
The RGB color **209, 178, 175** is a light color, and the websafe version is hex **CC9999**. A complement of this color would be **175, 206, 209**, and the grayscale version is **187, 187, 187**.

A 20% lighter version of the original color is **255, 234, 230**, and **154, 125, 123** is the 20% darker color. If you saturate the color by 10%, you get **209, 159, 154**, and if you desaturate by 10%, it is **209, 197, 196**.

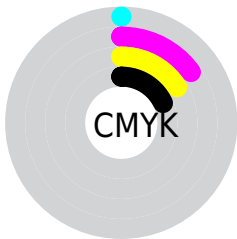
# Distribution



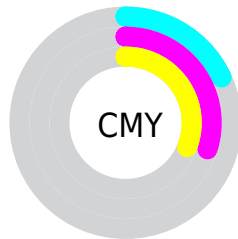
- Red (82%)
- Green (70%)
- Blue (69%)



- Red (82%)
- Yellow (70%)
- Blue (69%)



- Cyan (0%)
- Magenta (15%)
- Yellow (16%)
- Black (18%)



- Cyan (18%)
- Magenta (30%)
- Yellow (31%)

# Brightness & Saturation Gradients

These gradients show how the RGB color 209, 178, 175 changes by changing the brightness by 10 percent. The first figure shows a shift by +10% for each color and the second figure -10%.


Similar to the brightness gradients but the following saturation gradients show a change of the RGB color 209, 178, 175 by changing the saturation by 10% instead.



 209, 178, 175

 209, 178, 175

255, 255, 255

 181, 151, 148

 255, 234, 230

 154, 125, 123

 128, 100, 98

 103, 76, 74


 78, 54, 51


 55, 32, 30

 34, 10, 5


 0, 0, 0

 209, 178, 175

 209, 178, 175

 209, 159, 154

 209, 197, 196

 209, 140, 133

 209, 216, 217

 209, 121, 112

 209, 235, 238

 209, 102, 91

 209, 254, 255

 209, 83, 71

 209, 255, 255

 209, 64, 50

 209, 45, 29

 209, 26, 8

 209, 18, 0

# Harmonies

## Analogous

The Analogous color harmony consists of three colors that are next to each other on the color wheel.



207, 178, 186



209, 178, 175



205, 180, 166

# Triad

The Triadic color harmony groups three colors that are evenly spaced from another and form a triangle on the color wheel.



209, 178, 175



170, 190, 173



172, 186, 207

# Complementary

The Complementary color scheme is a pair of colors which are on the opposite of each other on the color wheel.



209, 178, 175



175, 206, 209

# Split Complementary

Split-complementary colors differ from the complementary color scheme. The scheme consists of three colors, the original color and two neighbors of the complement color.



161, 189, 203



209, 178, 175



160, 192, 184

# Square

The Square scheme is like the rectangle color scheme, but the four colors are evenly spaced on the color wheel.



209, 178, 175



183, 187, 165



157, 191, 195



186, 182, 205

# Rectangle

The Rectangle color scheme consists of four colors that form a rectangle on the color wheel.



209, 178, 175



199, 183, 163



157, 191, 195



168, 187, 206



# Sweetspot

The Sweet Spot groups the original color and five complimentary colors.



209, 178, 175



255, 243, 242



209, 175, 206



128, 121, 120



0, 0, 0



128, 128, 128



# Same Dimension

The Same Dimension uses a secret algorithm to generate beautiful new colors.



209, 178, 175



255, 209, 204



209, 195, 175



105, 95, 94



168, 15, 0



41, 4, 0

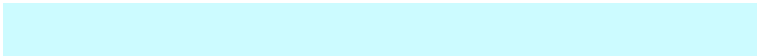


# Inverse Universe

The Inverse Universe completely reimagines the original color for something new.



175, 206, 209



204, 251, 255



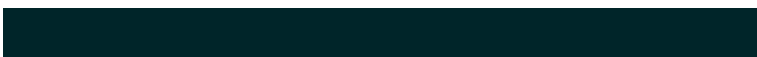
175, 189, 209



94, 104, 105



0, 153, 168

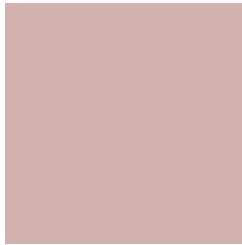


0, 37, 41



# Previews

## White Background



This preview shows how the RGB color 209, 178, 175 looks on a white background.

## Color Contrast Check

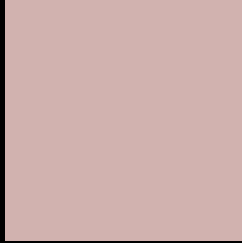
Large Text (above 18pt) WCAG AA × Fail

Any Text WCAG AA × Fail

Large Text (above 18pt) WCAG AAA × Fail

Any Text WCAG AAA × Fail

# Black Background



This preview shows how the RGB color 209, 178, 175 looks on a black background.

## Color Contrast Check

Large Text (above 18pt) WCAG AA ✓ Pass

Any Text WCAG AA ✓ Pass

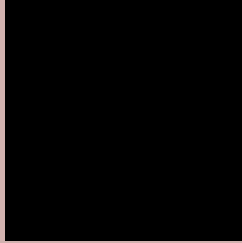
Large Text (above 18pt) WCAG AAA ✓ Pass

Any Text WCAG AAA ✓ Pass

If you want to check with other color combinations, try the [Color Contrast Checker](#).



## RGB 209, 178, 175 Background



This preview shows how black text looks on a background with the RGB color 209, 178, 175.



This preview shows how white text looks on a background with the RGB color 209, 178, 175.

# Color Blindness Simulation

Color vision deficiency is a very complex topic, and I could not describe the different causes any better than Wikipedia does, so if you want to learn more, you should check out their [article about color blindness](#).


## Dichromacy



**Original Color**  
209, 178, 175

**Protanopia**  
190, 184, 179

**Deuteranopia**  
207, 179, 175



**Tritanopia**  
211, 176, 189

# Trichromacy



**Original Color**

209, 178, 175

**Protanomaly**

197, 182, 178

**Deuteranomaly**

208, 179, 175

**Tritanomaly**

210, 177, 184

# Monochromacy



**Original Color**

209, 178, 175

**Achromatopsia**

187, 187, 187

**Achromatomaly**

195, 184, 183

# CSS Examples

## Text

The CSS property to change the color of the text to RGB 209, 178, 175 is called "color". The color property can be set on classes, ids or directly on the HTML element.

This example shows how text in the color rgb(209, 178, 175) looks like.

```
.text, #text, p{  
    color:rgb(209, 178, 175)  
}
```

If you want to add a text shadow in that color use the text-shadow property, you can generate a text shadow directly with our [CSS Text Shadow Generator](#).

Here you see how black text with a 4 pixel rgb(209, 178, 175) colored shadow looks like.

```
.shadow{ text-shadow: 4px 4px 2px rgb(209, 178, 175) }
```

## Border

The CSS property to change the border of an element to RGB 209, 178, 175 is called "border". The border property can be set on classes, ids or directly on the HTML element.

This example shows the color as border, it can be applied via the CSS property "border" or "border-color".

```
.border, #border, table{ border:4px solid rgb(209, 178, 175) }
```

If only the border color should be changed use the property `border-color`.

```
.border{ border-color:rgb(209, 178, 175) }
```

If you want to add a box shadow in that color use:

Here you see how a box with a 4 pixel `rgb(209, 178, 175)` colored shadow looks like.

```
.boxshadow{ -moz-box-shadow:4px 4px 4px  
4px rgb(209, 178, 175); -webkit-box-  
shadow:4px 4px 4px 4px rgb(209, 178, 175);  
box-shadow:4px 4px 4px 4px rgb(209, 178,  
175) }
```

# Background

The CSS property to change the background color of an element to RGB 209, 178, 175 is called "background". The background property can be set on classes, ids or directly on the HTML element.

```
.background, #background, body{  
background: rgb(209, 178, 175) }
```

If only the background color should be changed can be used:

```
.background{ background-color: rgb(209,  
178, 175) }
```

This example shows the color as background, it is applied via the CSS property "background".

To optimize and compress your CSS code, you can use our [online CSS compressor and optimizer](#) based on csstidy. If you want to create a linear or radial gradient as background or border, check our [CSS Gradient Generator](#).



Hey! You found this booklet interesting? Support Converting Colors with the new Membership Option!

The pro membership hides all ads, plus gives you double the colors in the color bucket, and more awesome pro features!

**[Learn more, Memberships starting at \\$2.50/m!](#)**

**Follow me  
on Twitter!**

@ConvertingColor