

Converting Colors

RGB(209, 183, 150)

Have a look what the booklet for
RGB(209, 183, 150) contains.

RGB(209, 183, 150)	3
<i>Conversions</i>	4
<i>Details</i>	6
<i>Harmonies</i>	11
<i>Previews</i>	23
<i>Color Blindness Simulation</i>	26
<i>CSS Examples</i>	29

Color

RGB(209, 183, 150)

Conversions

Conversions Part 1

Format	Color
Hex	D1B796
RGB	209, 183, 150
RGB Percent	82%, 72%, 59%
CMY	0.1804, 0.2824, 0.4118
CMYK	0.00, 0.12, 0.28, 0.18
HSL	34°, 39%, 70%
HSV	34°, 28%, 82%
XYZ	48.7330, 49.6243, 35.8641
YIQ	187.0120, 26.0890, -4.7510

Conversions

Conversions Part 2

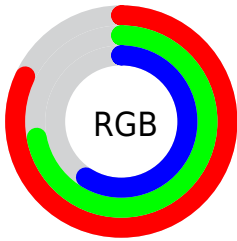
Format	Color
RYB	196, 209, 150
Decimal	13744022
CIELab	75.84, 4.34, 20.22
CIELCh	76, 20.679, 77.899
Yxy	49.6243, 0.3631, 0.3697
Android (android.graphics.Color)	4291934102 (0xFFD1B796)
YUV	187.0120, -18.2469, 19.2835
Hunter-Lab	70.4445, 0.2071, 19.1259

Details

The RGB color **209, 183, 150** is a light color, and the websafe version is hex **CCCC99**. A complement of this color would be **150, 176, 209**, and the grayscale version is **187, 187, 187**.

A 20% lighter version of the original color is **255, 239, 204**, and **154, 130, 99** is the 20% darker color. If you saturate the color by 10%, you get **209, 174, 129**, and if you desaturate by 10%, it is **209, 192, 171**.

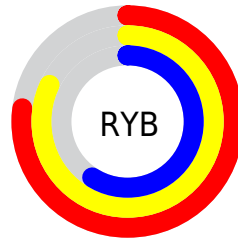
Distribution



Red (82%)

Green (72%)

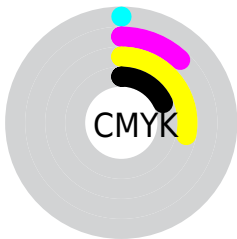
Blue (59%)



Red (77%)

Yellow (82%)

Blue (59%)

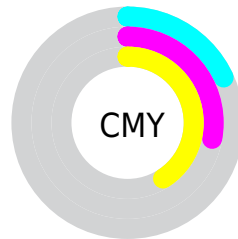


Cyan (0%)

Magenta (12%)

Yellow (28%)

Black (18%)



Cyan (18%)

Magenta (28%)

Yellow (41%)

Brightness & Saturation Gradients

These gradients show how the RGB color 209, 183, 150 changes by changing the brightness by 10 percent. The first figure shows a shift by +10% for each color and the second figure -10%.

Similar to the brightness gradients but the following saturation gradients show a change of the RGB color 209, 183, 150 by changing the saturation by 10% instead.

 209, 183, 150

 209, 183, 150

255, 255, 255

 181, 156, 124

 255, 239, 204

 154, 130, 99

 255, 255, 232

 127, 105, 75

 102, 81, 52

 77, 58, 30

 53, 37, 7

 31, 16, 0

 0, 0, 0

 209, 183, 150

 209, 183, 150

 209, 174, 129

 209, 192, 171

 209, 165, 108

 209, 201, 192

 209, 155, 87

 209, 211, 213

 209, 146, 66

 209, 220, 234

 209, 137, 46

 209, 229, 254

 209, 128, 25

 209, 238, 255

 209, 119, 4

 209, 247, 255

 209, 117, 0

 209, 255, 255

Harmonies

Analogous

The Analogous color harmony consists of three colors that are next to each other on the color wheel.



222, 177, 159



209, 183, 150



190, 189, 151

Triad

The Triadic color harmony groups three colors that are evenly spaced from another and form a triangle on the color wheel.



209, 183, 150



136, 198, 198



204, 178, 213

Complementary

The Complementary color scheme is a pair of colors which are on the opposite of each other on the color wheel.



209, 183, 150



150, 176, 209

Split Complementary

Split-complementary colors differ from the complementary color scheme. The scheme consists of three colors, the original color and two neighbors of the complement color.



180, 185, 223



209, 183, 150



138, 196, 215

Square

The Square scheme is like the rectangle color scheme, but the four colors are evenly spaced on the color wheel.



209, 183, 150



148, 197, 178



155, 191, 224



221, 174, 195

Rectangle

The Rectangle color scheme consists of four colors that form a rectangle on the color wheel.



209, 183, 150



175, 193, 156



155, 191, 224



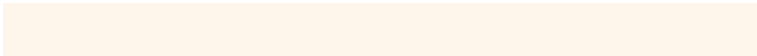
197, 180, 217

Sweetspot

The Sweet Spot groups the original color and five complimentary colors.



209, 183, 150



255, 246, 235



209, 150, 177



128, 122, 115



0, 0, 0



128, 128, 128

Same Dimension

The Same Dimension uses a secret algorithm to generate beautiful new colors.



209, 183, 150



255, 217, 168



206, 209, 150



105, 100, 94



168, 94, 0



41, 23, 0

Inverse Universe

The Inverse Universe completely reimagines the original color for something new.



150, 176, 209



168, 207, 255



153, 150, 209



94, 99, 105



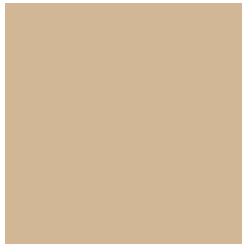
0, 74, 168



0, 18, 41

Previews

White Background



This preview shows how the RGB color 209, 183, 150 looks on a white background.

Color Contrast Check

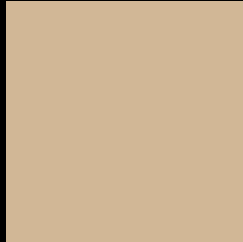
Large Text (above 18pt) WCAG AA × Fail

Any Text WCAG AA × Fail

Large Text (above 18pt) WCAG AAA × Fail

Any Text WCAG AAA × Fail

Black Background



This preview shows how the RGB color 209, 183, 150 looks on a black background.

Color Contrast Check

Large Text (above 18pt) WCAG AA ✓ Pass

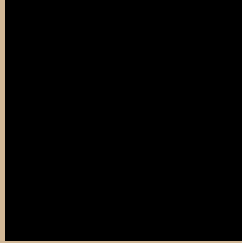
Any Text WCAG AA ✓ Pass

Large Text (above 18pt) WCAG AAA ✓ Pass

Any Text WCAG AAA ✓ Pass

If you want to check with other color combinations, try the [Color Contrast Checker](#).

RGB 209, 183, 150 Background



This preview shows how black text looks on a background with the RGB color 209, 183, 150.



This preview shows how white text looks on a background with the RGB color 209, 183, 150.

Color Blindness Simulation

Color vision deficiency is a very complex topic, and I could not describe the different causes any better than Wikipedia does, so if you want to learn more, you should check out their [article about color blindness](#).

Dichromacy



Original Color
209, 183, 150

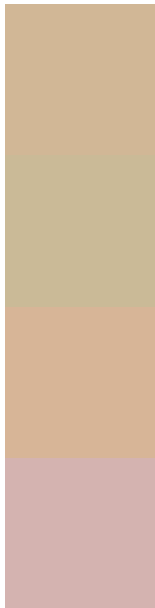
Protanopia
198, 187, 152

Deuteranopia
218, 180, 151



Tritanopia
214, 177, 191

Trichromacy



Original Color

209, 183, 150

Protanomaly

202, 186, 151

Deuteranomaly

215, 181, 151

Tritanomaly

212, 179, 176

Monochromacy



Original Color

209, 183, 150

Achromatopsia

187, 187, 187

Achromatomaly

195, 186, 174

CSS Examples

Text

The CSS property to change the color of the text to RGB 209, 183, 150 is called "color". The color property can be set on classes, ids or directly on the HTML element.

This example shows how text in the color `rgb(209, 183, 150)` looks like.

```
.text, #text, p{  
    color:rgb(209, 183, 150)  
}
```

If you want to add a text shadow in that color use the text-shadow property, you can generate a text shadow directly with our [CSS Text Shadow Generator](#).

Here you see how black text with a 4 pixel rgb(209, 183, 150) colored shadow looks like.

```
.shadow{ text-shadow: 4px 4px 2px rgb(209, 183, 150) }
```

Border

The CSS property to change the border of an element to RGB 209, 183, 150 is called "border". The border property can be set on classes, ids or directly on the HTML element.

This example shows the color as border, it can be applied via the CSS property "border" or "border-color".

```
.border, #border, table{ border:4px solid rgb(209, 183, 150) }
```

If only the border color should be changed use the property `border-color`.

```
.border{ border-color:rgb(209, 183, 150) }
```

If you want to add a box shadow in that color use:

Here you see how a box with a 4 pixel `rgb(209, 183, 150)` colored shadow looks like.

```
.boxshadow{ -moz-box-shadow:4px 4px 4px  
4px rgb(209, 183, 150); -webkit-box-  
shadow:4px 4px 4px 4px rgb(209, 183, 150);  
box-shadow:4px 4px 4px 4px rgb(209, 183,  
150) }
```

Background

The CSS property to change the background color of an element to RGB 209, 183, 150 is called "background". The background property can be set on classes, ids or directly on the HTML element.

```
.background, #background, body{  
background: rgb(209, 183, 150) }
```

If only the background color should be changed can be used:

```
.background{ background-color: rgb(209,  
183, 150) }
```

This example shows the color as background, it is applied via the CSS property "background".

To optimize and compress your CSS code, you can use our [online CSS compressor and optimizer](#) based on csstidy. If you want to create a linear or radial gradient as background or border, check our [CSS Gradient Generator](#).

Hey! You found this booklet interesting? Support Converting Colors with the new Membership Option!

The pro membership hides all ads, plus gives you double the colors in the color bucket, and more awesome pro features!

[Learn more, Memberships starting at \\$2.50/m!](#)

**Follow me
on Twitter!**

@ConvertingColor