

Converting Colors

RGB(209, 189, 192)

Have a look what the booklet for
RGB(209, 189, 192) contains.

RGB(209, 189, 192)	3
<i>Conversions</i>	4
<i>Details</i>	6
<i>Harmonies</i>	11
<i>Previews</i>	23
<i>Color Blindness Simulation</i>	26
<i>CSS Examples</i>	29

Color

RGB(209, 189, 192)

Conversions

Conversions Part 1

Format	Color
Hex	D1BDC0
RGB	209, 189, 192
RGB Percent	82%, 74%, 75%
CMY	0.1804, 0.2588, 0.2471
CMYK	0.00, 0.10, 0.08, 0.18
HSL	351°, 18%, 78%
HSV	351°, 10%, 82%
XYZ	54.0065, 53.7563, 57.3987
YIQ	195.3220, 10.9570, 5.1730

Conversions

Conversions Part 2

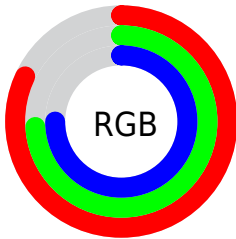
Format	Color
RYB	209, 189, 192
Decimal	13745600
CIELab	78.32, 7.58, 1.06
CIELCh	78, 7.656, 7.927
Yxy	53.7563, 0.3270, 0.3255
Android (android.graphics.Color)	4291935680 (0xFFD1BDC0)
YUV	195.3220, -1.6377, 11.9956
Hunter-Lab	73.3187, 3.1754, 4.9069

Details

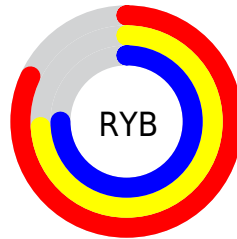
The RGB color **209, 189, 192** is a light color, and the websafe version is hex **CCCCCC**. A complement of this color would be **189, 209, 206**, and the grayscale version is **195, 195, 195**.

A 20% lighter version of the original color is **255, 245, 248**, and **154, 136, 139** is the 20% darker color. If you saturate the color by 10%, you get **209, 168, 174**, and if you desaturate by 10%, it is **209, 210, 210**.

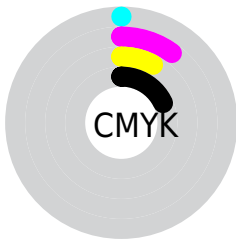
Distribution



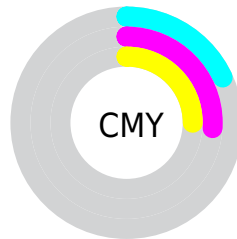
- Red (82%)
- Green (74%)
- Blue (75%)



- Red (82%)
- Yellow (74%)
- Blue (75%)



- Cyan (0%)
- Magenta (10%)
- Yellow (8%)
- Black (18%)



- Cyan (18%)
- Magenta (26%)
- Yellow (25%)

Brightness & Saturation Gradients

These gradients show how the RGB color 209, 189, 192 changes by changing the brightness by 10 percent. The first figure shows a shift by +10% for each color and the second figure -10%.


Similar to the brightness gradients but the following saturation gradients show a change of the RGB color 209, 189, 192 by changing the saturation by 10% instead.


 209, 189, 192

255, 255, 255

 255, 245, 248

 209, 189, 192

 181, 162, 165

 154, 136, 139

 128, 110, 113

 103, 86, 89

 79, 63, 65

 56, 41, 43


 34, 20, 23

 1, 0, 0

 0, 0, 0

 209, 189, 192


 209, 189, 192

 209, 168, 174

 209, 210, 210

 209, 147, 156

 209, 231, 228

 209, 126, 139

 209, 252, 245

 209, 105, 121

 209, 255, 255

 209, 85, 103

 209, 64, 85

 209, 43, 68

 209, 22, 50

 209, 1, 32

Harmonies

Analogous

The Analogous color harmony consists of three colors that are next to each other on the color wheel.



205, 190, 199



209, 189, 192



209, 190, 185

Triad

The Triadic color harmony groups three colors that are evenly spaced from another and form a triangle on the color wheel.



209, 189, 192



190, 196, 182



181, 196, 207

Complementary

The Complementary color scheme is a pair of colors which are on the opposite of each other on the color wheel.



209, 189, 192



189, 209, 206

Split Complementary

Split-complementary colors differ from the complementary color scheme. The scheme consists of three colors, the original color and two neighbors of the complement color.



177, 197, 202



209, 189, 192



182, 198, 188

Square

The Square scheme is like the rectangle color scheme, but the four colors are evenly spaced on the color wheel.



209, 189, 192



198, 194, 180



177, 198, 195



189, 194, 208

Rectangle

The Rectangle color scheme consists of four colors that form a rectangle on the color wheel.



209, 189, 192



207, 191, 182



177, 198, 195



179, 197, 205

Sweetspot

The Sweet Spot groups the original color and five complimentary colors.



209, 189, 192



255, 247, 248



206, 189, 209



128, 122, 123



0, 0, 0



128, 128, 128

Same Dimension

The Same Dimension uses a secret algorithm to generate beautiful new colors.



209, 189, 192



255, 227, 231



209, 196, 189



105, 94, 96



168, 0, 25



41, 0, 6

Inverse Universe

The Inverse Universe completely reimagines the original color for something new.



209, 189, 192



255, 227, 231



189, 202, 209



105, 94, 96



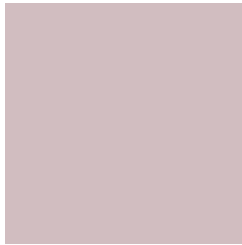
168, 0, 25



41, 0, 6

Previews

White Background



This preview shows how the RGB color 209, 189, 192 looks on a white background.

Color Contrast Check

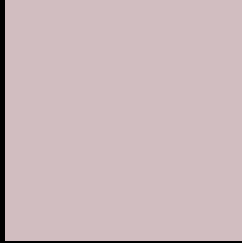
Large Text (above 18pt) WCAG AA × Fail

Any Text WCAG AA × Fail

Large Text (above 18pt) WCAG AAA × Fail

Any Text WCAG AAA × Fail

Black Background



This preview shows how the RGB color 209, 189, 192 looks on a black background.

Color Contrast Check

Large Text (above 18pt) WCAG AA ✓ Pass

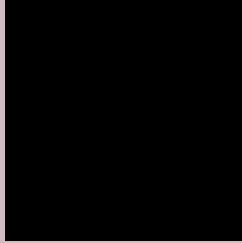
Any Text WCAG AA ✓ Pass

Large Text (above 18pt) WCAG AAA ✓ Pass

Any Text WCAG AAA ✓ Pass

If you want to check with other color combinations, try the [Color Contrast Checker](#).

RGB 209, 189, 192 Background



This preview shows how black text looks on a background with the RGB color 209, 189, 192.



This preview shows how white text looks on a background with the RGB color 209, 189, 192.

Color Blindness Simulation

Color vision deficiency is a very complex topic, and I could not describe the different causes any better than Wikipedia does, so if you want to learn more, you should check out their [article about color blindness](#).


Dichromacy



Original Color
209, 189, 192

Protanopia
197, 193, 194

Deuteranopia
213, 188, 192



Tritanopia
210, 187, 202

Trichromacy



Original Color

209, 189, 192

Protanomaly

201, 192, 193

Deuteranomaly

212, 188, 192

Tritanomaly

210, 188, 198

Monochromacy



Original Color

209, 189, 192

Achromatopsia

195, 195, 195

Achromatomaly

200, 193, 194

CSS Examples

Text

The CSS property to change the color of the text to RGB 209, 189, 192 is called "color". The color property can be set on classes, ids or directly on the HTML element.

This example shows how text in the color rgb(209, 189, 192) looks like.

```
.text, #text, p{  
    color:rgb(209, 189, 192)  
}
```

If you want to add a text shadow in that color use the text-shadow property, you can generate a text shadow directly with our [CSS Text Shadow Generator](#).

Here you see how black text with a 4 pixel rgb(209, 189, 192) colored shadow looks like.

```
.shadow{ text-shadow: 4px 4px 2px rgb(209, 189, 192) }
```

Border

The CSS property to change the border of an element to RGB 209, 189, 192 is called "border". The border property can be set on classes, ids or directly on the HTML element.

This example shows the color as border, it can be applied via the CSS property "border" or "border-color".

```
.border, #border, table{ border:4px solid rgb(209, 189, 192) }
```

If only the border color should be changed use the property border-color.

```
.border{ border-color:rgb(209, 189, 192) }
```

If you want to add a box shadow in that color use:

Here you see how a box with a 4 pixel rgb(209, 189, 192) colored shadow looks like.

```
.boxshadow{ -moz-box-shadow:4px 4px 4px  
4px rgb(209, 189, 192); -webkit-box-  
shadow:4px 4px 4px 4px rgb(209, 189, 192);  
box-shadow:4px 4px 4px 4px rgb(209, 189,  
192) }
```

Background

The CSS property to change the background color of an element to RGB 209, 189, 192 is called "background". The background property can be set on classes, ids or directly on the HTML element.

```
.background, #background, body{  
background: rgb(209, 189, 192) }
```

If only the background color should be changed can be used:

```
.background{ background-color: rgb(209,  
189, 192) }
```

This example shows the color as background, it is applied via the CSS property "background".

To optimize and compress your CSS code, you can use our [online CSS compressor and optimizer](#) based on csstidy. If you want to create a linear or radial gradient as background or border, check our [CSS Gradient Generator](#).

Hey! You found this booklet interesting? Support Converting Colors with the new Membership Option!

The pro membership hides all ads, plus gives you double the colors in the color bucket, and more awesome pro features!

[Learn more, Memberships starting at \\$2.50/m!](#)

**Follow me
on Twitter!**

@ConvertingColor