

Converting Colors

RGB(210, 148, 140)

Have a look what the booklet for
RGB(210, 148, 140) contains.

RGB(210, 148, 140)	3
<i>Conversions</i>	4
<i>Details</i>	6
<i>Harmonies</i>	11
<i>Previews</i>	23
<i>Color Blindness Simulation</i>	26
<i>CSS Examples</i>	29

Color

RGB(210, 148, 140)

Conversions

Conversions Part 1

Format	Color
Hex	D2948C
RGB	210, 148, 140
RGB Percent	82%, 58%, 55%
CMY	0.1765, 0.4196, 0.4510
CMYK	0.00, 0.30, 0.33, 0.18
HSL	7°, 44%, 69%
HSV	7°, 33%, 82%
XYZ	41.9019, 36.7749, 29.7007
YIQ	165.6260, 39.5200, 10.6560

Conversions

Conversions Part 2

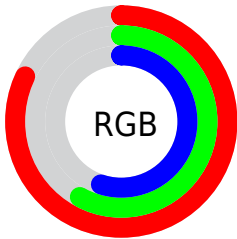
Format	Color
RYB	210, 149, 140
Decimal	13800588
CIELab	67.11, 22.32, 13.58
CIELCh	67, 26.126, 31.323
Yxy	36.7749, 0.3866, 0.3393
Android (android.graphics.Color)	4291990668 (0xFFD2948C)
YUV	165.6260, -12.6336, 38.9160
Hunter-Lab	60.6423, 17.2137, 13.4112

Details

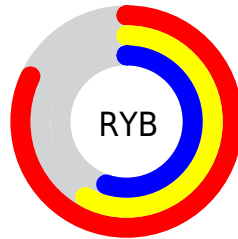
The RGB color **210, 148, 140** is a light color, and the websafe version is hex **CC9999**. A complement of this color would be **140, 202, 210**, and the grayscale version is **166, 166, 166**.

A 20% lighter version of the original color is **255, 202, 194**, and **154, 97, 90** is the 20% darker color. If you saturate the color by 10%, you get **210, 129, 119**, and if you desaturate by 10%, it is **210, 167, 161**.

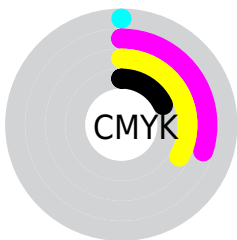
Distribution



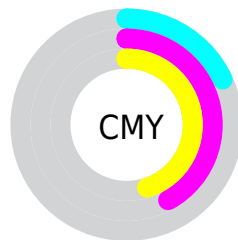
- Red (82%)
- Green (58%)
- Blue (55%)



- Red (82%)
- Yellow (58%)
- Blue (55%)



- Cyan (0%)
- Magenta (30%)
- Yellow (33%)
- Black (18%)





- Cyan (18%)
- Magenta (42%)
- Yellow (45%)

Brightness & Saturation Gradients


These gradients show how the RGB color 210, 148, 140 changes by changing the brightness by 10 percent. The first figure shows a shift by +10% for each color and the second figure -10%.

Similar to the brightness gradients but the following saturation gradients show a change of the RGB color 210, 148, 140 by changing the saturation by 10% instead.

 210, 148, 140

 210, 148, 140

255, 255, 255

 182, 122, 115

 255, 202, 194


 154, 97, 90

 255, 231, 221

 127, 73, 67

 255, 255, 250

 100, 49, 44


 74, 27, 24

 51, 5, 0

 22, 0, 0

 0, 0, 0

 210, 148, 140

 210, 148, 140

■ 210, 129, 119

■ 210, 167, 161

■ 210, 111, 98

■ 210, 185, 182

■ 210, 92, 77

■ 210, 204, 203

■ 210, 74, 56

■ 210, 222, 224

■ 210, 55, 35

■ 210, 241, 245

■ 210, 36, 14

■ 210, 255, 255

■ 210, 24, 0

Harmonies

Analogous

The Analogous color harmony consists of three colors that are next to each other on the color wheel.



209, 146, 163



210, 148, 140



199, 154, 123

Triad

The Triadic color harmony groups three colors that are evenly spaced from another and form a triangle on the color wheel.



210, 148, 140



127, 174, 140



135, 165, 210

Complementary

The Complementary color scheme is a pair of colors which are on the opposite of each other on the color wheel.



210, 148, 140



140, 202, 210

Split Complementary

Split-complementary colors differ from the complementary color scheme. The scheme consists of three colors, the original color and two neighbors of the complement color.



105, 172, 204



210, 148, 140



103, 176, 164

Square

The Square scheme is like the rectangle color scheme, but the four colors are evenly spaced on the color wheel.



210, 148, 140



154, 169, 123



92, 176, 187



168, 157, 203

Rectangle

The Rectangle color scheme consists of four colors that form a rectangle on the color wheel.



210, 148, 140



187, 159, 117



92, 176, 187



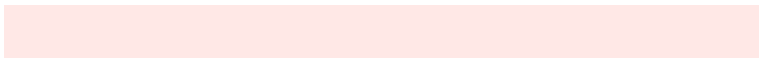
124, 168, 209

Sweetspot

The Sweet Spot groups the original color and five complimentary colors.



210, 148, 140



255, 232, 230



210, 140, 203



128, 114, 112



0, 0, 0



128, 128, 128

Same Dimension

The Same Dimension uses a secret algorithm to generate beautiful new colors.



210, 148, 140



255, 165, 153



210, 182, 140



105, 95, 94



168, 19, 0



41, 5, 0

Inverse Universe

The Inverse Universe completely reimagines the original color for something new.



140, 202, 210



153, 243, 255



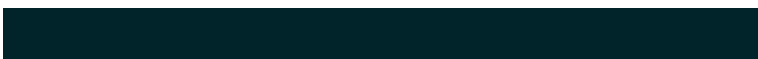
140, 168, 210



94, 103, 105



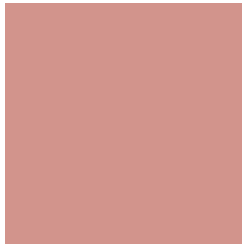
0, 149, 168



0, 36, 41

Previews

White Background



This preview shows how the RGB color 210, 148, 140 looks on a white background.

Color Contrast Check

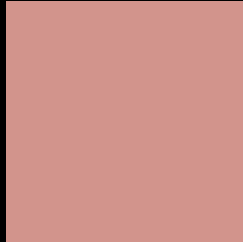
Large Text (above 18pt) WCAG AA × Fail

Any Text WCAG AA × Fail

Large Text (above 18pt) WCAG AAA × Fail

Any Text WCAG AAA × Fail

Black Background



This preview shows how the RGB color 210, 148, 140 looks on a black background.

Color Contrast Check

Large Text (above 18pt) WCAG AA ✓ Pass

Any Text WCAG AA ✓ Pass

Large Text (above 18pt) WCAG AAA ✓ Pass

Any Text WCAG AAA ✓ Pass

If you want to check with other color combinations, try the [Color Contrast Checker](#).

RGB 210, 148, 140 Background



This preview shows how black text looks on a background with the RGB color 210, 148, 140.

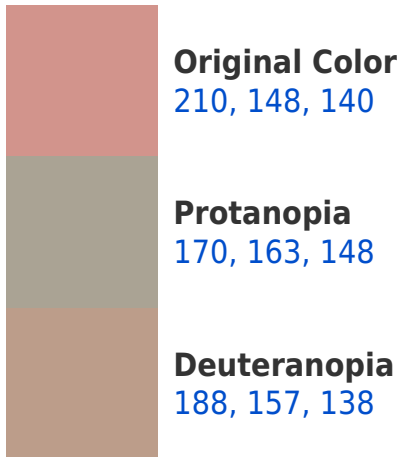


This preview shows how white text looks on a background with the RGB color 210, 148, 140.

Color Blindness Simulation

Color vision deficiency is a very complex topic, and I could not describe the different causes any better than Wikipedia does, so if you want to learn more, you should check out their [article about color blindness](#).

Dichromacy





Tritanopia
212, 146, 157

Trichromacy



Original Color

210, 148, 140

Protanomaly

185, 158, 145

Deuteranomaly

196, 154, 139

Tritanomaly

211, 147, 151

Monochromacy



Original Color

210, 148, 140

Achromatopsia

166, 166, 166

Achromatomaly

182, 159, 157

CSS Examples

Text

The CSS property to change the color of the text to RGB 210, 148, 140 is called "color". The color property can be set on classes, ids or directly on the HTML element.

This example shows how text in the color `rgb(210, 148, 140)` looks like.

```
.text, #text, p{  
    color:rgb(210, 148, 140)  
}
```

If you want to add a text shadow in that color use the text-shadow property, you can generate a text shadow directly with our [CSS Text Shadow Generator](#).

Here you see how black text with a 4 pixel rgb(210, 148, 140) colored shadow looks like.

```
.shadow{ text-shadow: 4px 4px 2px rgb(210, 148, 140) }
```

Border

The CSS property to change the border of an element to RGB 210, 148, 140 is called "border". The border property can be set on classes, ids or directly on the HTML element.

This example shows the color as border, it can be applied via the CSS property "border" or "border-color".

```
.border, #border, table{ border:4px solid rgb(210, 148, 140) }
```

If only the border color should be changed use the property `border-color`.

```
.border{ border-color:rgb(210, 148, 140) }
```

If you want to add a box shadow in that color use:

Here you see how a box with a 4 pixel `rgb(210, 148, 140)` colored shadow looks like.

```
.boxshadow{ -moz-box-shadow:4px 4px 4px 4px rgb(210, 148, 140); -webkit-box-shadow:4px 4px 4px 4px rgb(210, 148, 140); box-shadow:4px 4px 4px 4px rgb(210, 148, 140) }
```

Background

The CSS property to change the background color of an element to RGB 210, 148, 140 is called "background". The background property can be set on classes, ids or directly on the HTML element.

```
.background, #background, body{  
background: rgb(210, 148, 140) }
```

If only the background color should be changed can be used:

```
.background{ background-color: rgb(210,  
148, 140) }
```

This example shows the color as background, it is applied via the CSS property "background".

To optimize and compress your CSS code, you can use our [online CSS compressor and optimizer](#) based on csstidy. If you want to create a linear or radial gradient as background or border, check our [CSS Gradient Generator](#).

Hey! You found this booklet interesting? Support Converting Colors with the new Membership Option!

The pro membership hides all ads, plus gives you double the colors in the color bucket, and more awesome pro features!

[Learn more, Memberships starting at \\$2.50/m!](#)

**Follow me
on Twitter!**

@ConvertingColor