

Converting Colors

RGB(210, 158, 155)

Have a look what the booklet for
RGB(210, 158, 155) contains.

RGB(210, 158, 155)	3
<i>Conversions</i>	4
<i>Details</i>	6
<i>Harmonies</i>	11
<i>Previews</i>	23
<i>Color Blindness Simulation</i>	26
<i>CSS Examples</i>	29

Color

RGB(210, 158, 155)

Conversions

Conversions Part 1

Format	Color
Hex	D29E9B
RGB	210, 158, 155
RGB Percent	82%, 62%, 61%
CMY	0.1765, 0.3804, 0.3922
CMYK	0.00, 0.25, 0.26, 0.18
HSL	3°, 38%, 72%
HSV	3°, 26%, 82%
XYZ	44.7216, 40.5219, 36.4748
YIQ	173.2060, 31.9550, 10.0910

Conversions

Conversions Part 2

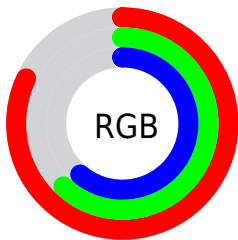
Format	Color
RYB	210, 158, 155
Decimal	13803163
CIELab	69.84, 18.89, 9.10
CIElCh	70, 20.970, 25.711
Yxy	40.5219, 0.3674, 0.3329
Android (android.graphics.Color)	4291993243 (0xFFD29E9B)
YUV	173.2060, -8.9756, 32.2683
Hunter-Lab	63.6568, 14.0043, 10.5872

Details

The RGB color **210, 158, 155** is a light color, and the websafe version is hex **CC9999**. A complement of this color would be **155, 207, 210**, and the grayscale version is **173, 173, 173**.

A 20% lighter version of the original color is **255, 213, 209**, and **154, 106, 104** is the 20% darker color. If you saturate the color by 10%, you get **210, 138, 134**, and if you desaturate by 10%, it is **210, 178, 176**.

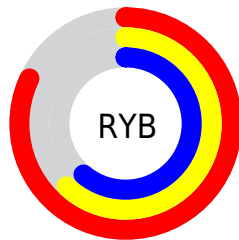
Distribution



Red (82%)

Green (62%)

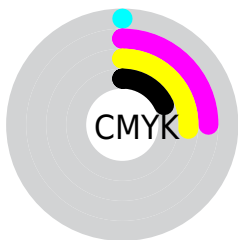
Blue (61%)



Red (82%)

Yellow (62%)

Blue (61%)

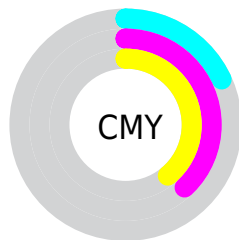


Cyan (0%)

Magenta (25%)

Yellow (26%)

Black (18%)



Cyan (18%)


Magenta (38%)


Yellow (39%)

Brightness & Saturation Gradients


These gradients show how the RGB color 210, 158, 155 changes by changing the brightness by 10 percent. The first figure shows a shift by +10% for each color and the second figure -10%.

Similar to the brightness gradients but the following saturation gradients show a change of the RGB color 210, 158, 155 by changing the saturation by 10% instead.

 210, 158, 155

 210, 158, 155

255, 255, 255

 182, 132, 129

 255, 213, 209

 154, 106, 104

 255, 241, 238

 128, 82, 80


 102, 58, 57


 76, 36, 36


 52, 15, 14


 32, 0, 1


 0, 0, 0


 210, 158, 155

 210, 158, 155

 210, 138, 134

 210, 178, 176

 210, 118, 113


 210, 198, 197

 210, 98, 92

 210, 218, 218

 210, 79, 71

 210, 237, 239

 210, 59, 50

 210, 255, 255

 210, 39, 29

 210, 19, 8

 210, 11, 0

Harmonies

Analogous

The Analogous color harmony consists of three colors that are next to each other on the color wheel.



207, 157, 174



210, 158, 155



203, 162, 140

Triad

The Triadic color harmony groups three colors that are evenly spaced from another and form a triangle on the color wheel.



210, 158, 155



146, 179, 149



145, 173, 208

Complementary

The Complementary color scheme is a pair of colors which are on the opposite of each other on the color wheel.



210, 158, 155



155, 207, 210

Split Complementary

Split-complementary colors differ from the complementary color scheme. The scheme consists of three colors, the original color and two neighbors of the complement color.



124, 178, 201



210, 158, 155



127, 181, 167

Square

The Square scheme is like the rectangle color scheme, but the four colors are evenly spaced on the color wheel.



210, 158, 155



168, 174, 136



118, 181, 186



170, 167, 205

Rectangle

The Rectangle color scheme consists of four colors that form a rectangle on the color wheel.



210, 158, 155



194, 166, 134



118, 181, 186



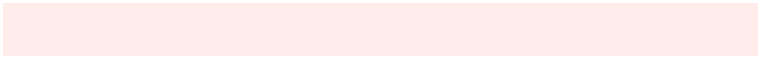
137, 175, 207

Sweetspot

The Sweet Spot groups the original color and five complimentary colors.



210, 158, 155



255, 236, 235



210, 155, 207



128, 115, 115



0, 0, 0



128, 128, 128

Same Dimension

The Same Dimension uses a secret algorithm to generate beautiful new colors.



210, 158, 155



255, 180, 176



210, 185, 155



105, 95, 94



168, 9, 0



41, 2, 0

Inverse Universe

The Inverse Universe completely reimagines the original color for something new.



155, 207, 210



176, 251, 255



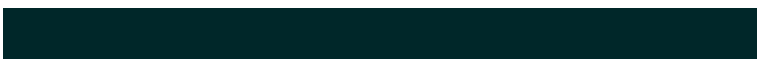
155, 180, 210



94, 104, 105



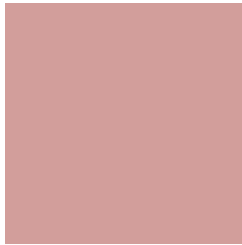
0, 159, 168



0, 39, 41

Previews

White Background



This preview shows how the RGB color 210, 158, 155 looks on a white background.

Color Contrast Check

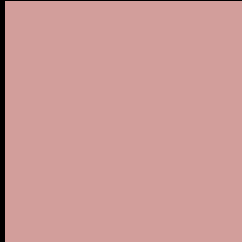
Large Text (above 18pt) WCAG AA × Fail

Any Text WCAG AA × Fail

Large Text (above 18pt) WCAG AAA × Fail

Any Text WCAG AAA × Fail

Black Background



This preview shows how the RGB color 210, 158, 155 looks on a black background.

Color Contrast Check

Large Text (above 18pt) WCAG AA ✓ Pass

Any Text WCAG AA ✓ Pass

Large Text (above 18pt) WCAG AAA ✓ Pass

Any Text WCAG AAA ✓ Pass

If you want to check with other color combinations, try the [Color Contrast Checker](#).

RGB 210, 158, 155 Background



This preview shows how black text looks on a background with the RGB color 210, 158, 155.




This preview shows how white text looks on a background with the RGB color 210, 158, 155.

Color Blindness Simulation

Color vision deficiency is a very complex topic, and I could not describe the different causes any better than Wikipedia does, so if you want to learn more, you should check out their [article about color blindness](#).

Dichromacy





Tritanopia
211, 156, 168

Trichromacy



Original Color

210, 158, 155

Protanomaly

188, 166, 159

Deuteranomaly

200, 162, 154

Tritanomaly

211, 157, 163

Monochromacy



Original Color

210, 158, 155

Achromatopsia

173, 173, 173

Achromatomaly

186, 168, 166

CSS Examples

Text

The CSS property to change the color of the text to RGB 210, 158, 155 is called "color". The color property can be set on classes, ids or directly on the HTML element.

This example shows how text in the color `rgb(210, 158, 155)` looks like.

```
.text, #text, p{  
    color:rgb(210, 158, 155)  
}
```

If you want to add a text shadow in that color use the text-shadow property, you can generate a text shadow directly with our [CSS Text Shadow Generator](#).

Here you see how black text with a 4 pixel rgb(210, 158, 155) colored shadow looks like.

```
.shadow{ text-shadow: 4px 4px 2px rgb(210, 158, 155) }
```

Border

The CSS property to change the border of an element to RGB 210, 158, 155 is called "border". The border property can be set on classes, ids or directly on the HTML element.

This example shows the color as border, it can be applied via the CSS property "border" or "border-color".

```
.border, #border, table{ border:4px solid rgb(210, 158, 155) }
```

If only the border color should be changed use the property `border-color`.

```
.border{ border-color:rgb(210, 158, 155) }
```

If you want to add a box shadow in that color use:

Here you see how a box with a 4 pixel `rgb(210, 158, 155)` colored shadow looks like.

```
.boxshadow{ -moz-box-shadow:4px 4px 4px  
4px rgb(210, 158, 155); -webkit-box-  
shadow:4px 4px 4px 4px rgb(210, 158, 155);  
box-shadow:4px 4px 4px 4px rgb(210, 158,  
155) }
```

Background

The CSS property to change the background color of an element to RGB 210, 158, 155 is called "background". The background property can be set on classes, ids or directly on the HTML element.

```
.background, #background, body{  
background: rgb(210, 158, 155) }
```

If only the background color should be changed can be used:

```
.background{ background-color: rgb(210,  
158, 155) }
```

This example shows the color as background, it is applied via the CSS property "background".

To optimize and compress your CSS code, you can use our [online CSS compressor and optimizer](#) based on csstidy. If you want to create a linear or radial gradient as background or border, check our [CSS Gradient Generator](#).

Hey! You found this booklet interesting? Support Converting Colors with the new Membership Option!

The pro membership hides all ads, plus gives you double the colors in the color bucket, and more awesome pro features!

[Learn more, Memberships starting at \\$2.50/m!](#)

**Follow me
on Twitter!**

@ConvertingColor