

Converting Colors

RGB(210, 171, 186)

Have a look what the booklet for
RGB(210, 171, 186) contains.

RGB(210, 171, 186)	3
<i>Conversions</i>	4
<i>Details</i>	6
<i>Harmonies</i>	11
<i>Previews</i>	23
<i>Color Blindness Simulation</i>	26
<i>CSS Examples</i>	29

Color

RGB(210, 171, 186)

Conversions

Conversions Part 1

Format	Color
Hex	D2ABBA
RGB	210, 171, 186
RGB Percent	82%, 67%, 73%
CMY	0.1765, 0.3294, 0.2706
CMYK	0.00, 0.19, 0.11, 0.18
HSL	337°, 30%, 75%
HSV	337°, 19%, 82%
XYZ	50.0042, 46.3726, 52.7697
YIQ	184.3710, 18.4290, 12.9330

Conversions

Conversions Part 2

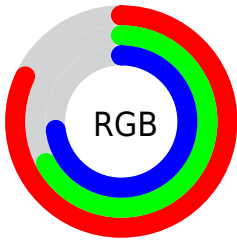
Format	Color
R _{YB}	210, 171, 186
Decimal	13806522
CIE Lab	73.79, 16.63, -2.29
CIE LCh	74, 16.784, 352.146
Yxy	46.3726, 0.3353, 0.3109
Android (android.graphics.Color)	4291996602 (0xFFD2ABBA)
YUV	184.3710, 0.8031, 22.4766
Hunter-Lab	68.0975, 11.9026, 1.7236

Details

The RGB color **210, 171, 186** is a light color, and the websafe version is hex **CC9999**. A complement of this color would be **171, 210, 195**, and the grayscale version is **184, 184, 184**.

A 20% lighter version of the original color is **255, 226, 242**, and **155, 119, 133** is the 20% darker color. If you saturate the color by 10%, you get **210, 150, 173**, and if you desaturate by 10%, it is **210, 192, 199**.

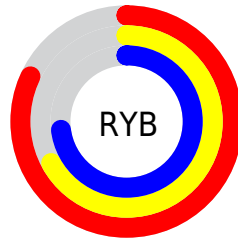
Distribution



Red (82%)

Green (67%)

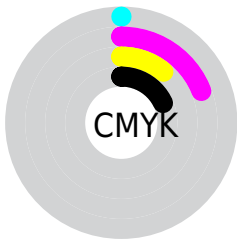
Blue (73%)



Red (82%)

Yellow (67%)

Blue (73%)

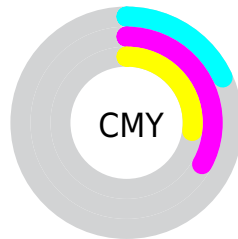


Cyan (0%)

Magenta (19%)

Yellow (11%)

Black (18%)



Cyan (18%)

Magenta (33%)

Yellow (27%)

Brightness & Saturation Gradients

These gradients show how the RGB color 210, 171, 186 changes by changing the brightness by 10 percent. The first figure shows a shift by +10% for each color and the second figure -10%.

Similar to the brightness gradients but the following saturation gradients show a change of the RGB color 210, 171, 186 by changing the saturation by 10% instead.


 210, 171, 186

 210, 171, 186

255, 255, 255

 182, 144, 159

 255, 226, 242

 155, 119, 133

 129, 94, 108

 103, 70, 84

 79, 47, 60

 55, 26, 39

 35, 1, 18

 0, 0, 0

 210, 171, 186

 210, 171, 186

■ 210, 150, 173

■ 210, 192, 199

■ 210, 129, 160

■ 210, 213, 212

■ 210, 108, 147

■ 210, 234, 225

■ 210, 87, 134

■ 210, 255, 238

■ 210, 66, 121

■ 210, 255, 251

■ 210, 45, 108

■ 210, 255, 255

■ 210, 24, 96

■ 210, 3, 83

■ 210, 0, 81

Harmonies

Analogous

The Analogous color harmony consists of three colors that are next to each other on the color wheel.



198, 174, 200



210, 171, 186



214, 171, 170

Triad

The Triadic color harmony groups three colors that are evenly spaced from another and form a triangle on the color wheel.



210, 171, 186



181, 184, 153



145, 188, 205

Complementary

The Complementary color scheme is a pair of colors which are on the opposite of each other on the color wheel.



210, 171, 186



171, 210, 195

Split Complementary

Split-complementary colors differ from the complementary color scheme. The scheme consists of three colors, the original color and two neighbors of the complement color.



141, 190, 192



210, 171, 186



164, 188, 162

Square

The Square scheme is like the rectangle color scheme, but the four colors are evenly spaced on the color wheel.



210, 171, 186



198, 179, 151



149, 190, 177



159, 184, 211

Rectangle

The Rectangle color scheme consists of four colors that form a rectangle on the color wheel.



210, 171, 186



212, 173, 161



149, 190, 177



142, 189, 201

Sweetspot

The Sweet Spot groups the original color and five complimentary colors.



210, 171, 186



255, 240, 246



194, 171, 210



128, 119, 122



0, 0, 0



128, 128, 128

Same Dimension

The Same Dimension uses a secret algorithm to generate beautiful new colors.



210, 171, 186



255, 199, 220



210, 175, 171



105, 94, 98



168, 0, 65



41, 0, 16

Inverse Universe

The Inverse Universe completely reimagines the original color for something new.



210, 171, 186



255, 199, 220



171, 206, 210



105, 94, 98



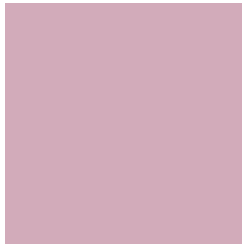
168, 0, 65



41, 0, 16

Previews

White Background



This preview shows how the RGB color 210, 171, 186 looks on a white background.

Color Contrast Check

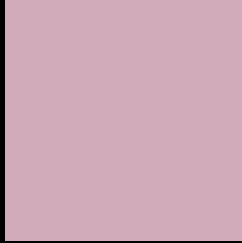
Large Text (above 18pt) WCAG AA × Fail

Any Text WCAG AA × Fail

Large Text (above 18pt) WCAG AAA × Fail

Any Text WCAG AAA × Fail

Black Background



This preview shows how the RGB color 210, 171, 186 looks on a black background.

Color Contrast Check

Large Text (above 18pt) WCAG AA ✓ Pass

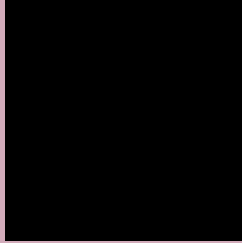
Any Text WCAG AA ✓ Pass

Large Text (above 18pt) WCAG AAA ✓ Pass

Any Text WCAG AAA ✓ Pass

If you want to check with other color combinations, try the [Color Contrast Checker](#).

RGB 210, 171, 186 Background



This preview shows how black text looks on a background with the RGB color 210, 171, 186.



This preview shows how white text looks on a background with the RGB color 210, 171, 186.

Color Blindness Simulation

Color vision deficiency is a very complex topic, and I could not describe the different causes any better than Wikipedia does, so if you want to learn more, you should check out their [article about color blindness](#).

Dichromacy



Original Color
210, 171, 186

Protanopia
182, 180, 192

Deuteranopia
197, 176, 185



Tritanopia
210, 171, 185

Trichromacy



Original Color

210, 171, 186

Protanomaly

192, 177, 190

Deuteranomaly

202, 174, 185

Tritanomaly

210, 171, 185

Monochromacy



Original Color

210, 171, 186

Achromatopsia

184, 184, 184

Achromatomaly

193, 179, 185

CSS Examples

Text

The CSS property to change the color of the text to RGB 210, 171, 186 is called "color". The color property can be set on classes, ids or directly on the HTML element.

This example shows how text in the color rgb(210, 171, 186) looks like.

```
.text, #text, p{  
    color:rgb(210, 171, 186)  
}
```

If you want to add a text shadow in that color use the text-shadow property, you can generate a text shadow directly with our [CSS Text Shadow Generator](#).

Here you see how black text with a 4 pixel rgb(210, 171, 186) colored shadow looks like.

```
.shadow{ text-shadow: 4px 4px 2px rgb(210, 171, 186) }
```

Border

The CSS property to change the border of an element to RGB 210, 171, 186 is called "border". The border property can be set on classes, ids or directly on the HTML element.

This example shows the color as border, it can be applied via the CSS property "border" or "border-color".

```
.border, #border, table{ border:4px solid rgb(210, 171, 186) }
```

If only the border color should be changed use the property `border-color`.

```
.border{ border-color:rgb(210, 171, 186) }
```

If you want to add a box shadow in that color use:

Here you see how a box with a 4 pixel `rgb(210, 171, 186)` colored shadow looks like.

```
.boxshadow{ -moz-box-shadow:4px 4px 4px  
4px rgb(210, 171, 186); -webkit-box-  
shadow:4px 4px 4px 4px rgb(210, 171, 186);  
box-shadow:4px 4px 4px 4px rgb(210, 171,  
186) }
```

Background

The CSS property to change the background color of an element to RGB 210, 171, 186 is called "background". The background property can be set on classes, ids or directly on the HTML element.

```
.background, #background, body{  
background: rgb(210, 171, 186) }
```

If only the background color should be changed can be used:

```
.background{ background-color: rgb(210,  
171, 186) }
```

This example shows the color as background, it is applied via the CSS property "background".

To optimize and compress your CSS code, you can use our [online CSS compressor and optimizer](#) based on csstidy. If you want to create a linear or radial gradient as background or border, check our [CSS Gradient Generator](#).

Hey! You found this booklet interesting? Support Converting Colors with the new Membership Option!

The pro membership hides all ads, plus gives you double the colors in the color bucket, and more awesome pro features!

[Learn more, Memberships starting at \\$2.50/m!](#)

**Follow me
on Twitter!**

@ConvertingColor