

Converting Colors

RGB(212, 183, 177)

Have a look what the booklet for
RGB(212, 183, 177) contains.

RGB(212, 183, 177)	3
<i>Conversions</i>	4
<i>Details</i>	6
<i>Harmonies</i>	11
<i>Previews</i>	23
<i>Color Blindness Simulation</i>	26
<i>CSS Examples</i>	29

Color

RGB(212, 183, 177)

Conversions

Conversions Part 1

Format	Color
Hex	D4B7B1
RGB	212, 183, 177
RGB Percent	83%, 72%, 69%
CMY	0.1686, 0.2824, 0.3059
CMYK	0.00, 0.14, 0.17, 0.17
HSL	10°, 29%, 76%
HSV	10°, 17%, 83%
XYZ	52.0207, 51.0383, 48.7046
YIQ	190.9870, 19.2100, 4.2820

Conversions

Conversions Part 2

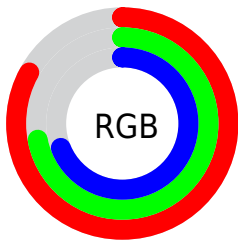
Format	Color
RYB	212, 184, 177
Decimal	13940657
CIELab	76.70, 9.41, 6.88
CIElCh	77, 11.658, 36.141
Yxy	51.0383, 0.3428, 0.3363
Android (android.graphics.Color)	4292130737 (0xFFD4B7B1)
YUV	190.9870, -6.8956, 18.4284
Hunter-Lab	71.4411, 4.9549, 9.5882

Details

The RGB color **212, 183, 177** is a light color, and the websafe version is hex **CCCCCC**. A complement of this color would be **177, 206, 212**, and the grayscale version is **191, 191, 191**.

A 20% lighter version of the original color is **255, 239, 233**, and **157, 130, 124** is the 20% darker color. If you saturate the color by 10%, you get **212, 165, 156**, and if you desaturate by 10%, it is **212, 201, 198**.

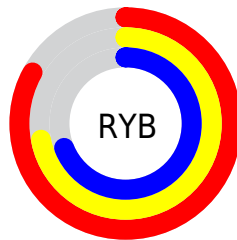
Distribution



Red (83%)

Green (72%)

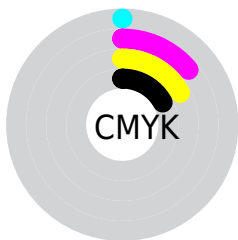
Blue (69%)



Red (83%)

Yellow (72%)

Blue (69%)

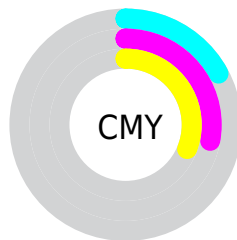


Cyan (0%)

Magenta (14%)

Yellow (17%)

Black (17%)



Cyan (17%)

Magenta (28%)

Yellow (31%)

Brightness & Saturation Gradients


These gradients show how the RGB color 212, 183, 177 changes by changing the brightness by 10 percent. The first figure shows a shift by +10% for each color and the second figure -10%.


Similar to the brightness gradients but the following saturation gradients show a change of the RGB color 212, 183, 177 by changing the saturation by 10% instead.

 212, 183, 177


255, 255, 255

 255, 239, 233


 212, 183, 177

 184, 156, 150

 157, 130, 124

 131, 105, 100

 105, 81, 76

 81, 58, 53

 57, 36, 32

 36, 15, 8

 0, 0, 0

 212, 183, 177

 212, 183, 177

■ 212, 165, 156

■ 212, 201, 198

■ 212, 148, 135

■ 212, 218, 219

■ 212, 130, 113

■ 212, 236, 241

■ 212, 113, 92

■ 212, 253, 255

■ 212, 95, 71

■ 212, 255, 255

■ 212, 78, 50

■ 212, 60, 29

■ 212, 42, 7

■ 212, 36, 0

Harmonies

Analogous

The Analogous color harmony consists of three colors that are next to each other on the color wheel.



212, 182, 187



212, 183, 177



206, 186, 170

Triad

The Triadic color harmony groups three colors that are evenly spaced from another and form a triangle on the color wheel.



212, 183, 177



172, 195, 180



181, 189, 210

Complementary

The Complementary color scheme is a pair of colors which are on the opposite of each other on the color wheel.



212, 183, 177



177, 206, 212

Split Complementary

Split-complementary colors differ from the complementary color scheme. The scheme consists of three colors, the original color and two neighbors of the complement color.



169, 193, 209



212, 183, 177



164, 196, 191

Square

The Square scheme is like the rectangle color scheme, but the four colors are evenly spaced on the color wheel.



212, 183, 177



184, 193, 172



163, 195, 202



194, 186, 207

Rectangle

The Rectangle color scheme consists of four colors that form a rectangle on the color wheel.



212, 183, 177



200, 188, 168



163, 195, 202



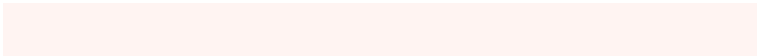
176, 191, 210

Sweetspot

The Sweet Spot groups the original color and five complimentary colors.



212, 183, 177



255, 244, 242



212, 177, 206



128, 121, 120



0, 0, 0



128, 128, 128

Same Dimension

The Same Dimension uses a secret algorithm to generate beautiful new colors.



212, 183, 177



255, 213, 204



212, 200, 177



107, 98, 96



171, 29, 0



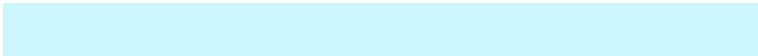
43, 7, 0

Inverse Universe

The Inverse Universe completely reimagines the original color for something new.



177, 206, 212



204, 246, 255



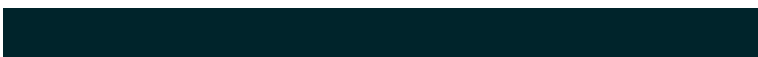
177, 189, 212



96, 105, 107



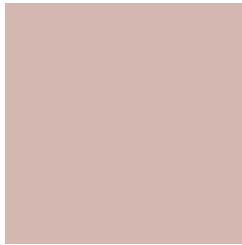
0, 142, 171



0, 36, 43

Previews

White Background



This preview shows how the RGB color 212, 183, 177 looks on a white background.

Color Contrast Check

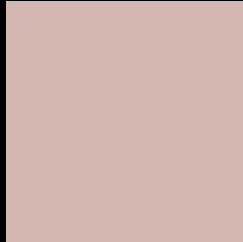
Large Text (above 18pt) WCAG AA × Fail

Any Text WCAG AA × Fail

Large Text (above 18pt) WCAG AAA × Fail

Any Text WCAG AAA × Fail

Black Background



This preview shows how the RGB color 212, 183, 177 looks on a black background.

Color Contrast Check

Large Text (above 18pt) WCAG AA ✓ Pass

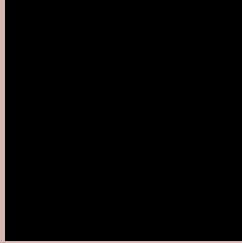
Any Text WCAG AA ✓ Pass

Large Text (above 18pt) WCAG AAA ✓ Pass

Any Text WCAG AAA ✓ Pass

If you want to check with other color combinations, try the [Color Contrast Checker](#).

RGB 212, 183, 177 Background



This preview shows how black text looks on a background with the RGB color 212, 183, 177.






This preview shows how white text looks on a background with the RGB color 212, 183, 177.

Color Blindness Simulation

Color vision deficiency is a very complex topic, and I could not describe the different causes any better than Wikipedia does, so if you want to learn more, you should check out their [article about color blindness](#).

Dichromacy

	Original Color 212, 183, 177
	Protanopia 195, 189, 180
	Deuteranopia 212, 183, 177



Tritanopia
214, 180, 194

Trichromacy



Original Color
212, 183, 177

Protanomaly
201, 187, 179

Deuteranomaly
212, 183, 177

Tritanomaly
213, 181, 188

Monochromacy



Original Color
212, 183, 177

Achromatopsia
191, 191, 191

Achromatomaly
199, 188, 186

CSS Examples

Text

The CSS property to change the color of the text to RGB 212, 183, 177 is called "color". The color property can be set on classes, ids or directly on the HTML element.

This example shows how text in the color rgb(212, 183, 177) looks like.

```
.text, #text, p{  
    color:rgb(212, 183, 177)  
}
```

If you want to add a text shadow in that color use the text-shadow property, you can generate a text shadow directly with our [CSS Text Shadow Generator](#).

Here you see how black text with a 4 pixel rgb(212, 183, 177) colored shadow looks like.

```
.shadow{ text-shadow: 4px 4px 2px rgb(212, 183, 177) }
```

Border

The CSS property to change the border of an element to RGB 212, 183, 177 is called "border". The border property can be set on classes, ids or directly on the HTML element.

This example shows the color as border, it can be applied via the CSS property "border" or "border-color".

```
.border, #border, table{ border:4px solid rgb(212, 183, 177) }
```

If only the border color should be changed use the property `border-color`.

```
.border{ border-color:rgb(212, 183, 177) }
```

If you want to add a box shadow in that color use:

Here you see how a box with a 4 pixel `rgb(212, 183, 177)` colored shadow looks like.

```
.boxshadow{ -moz-box-shadow:4px 4px 4px 4px rgb(212, 183, 177); -webkit-box-shadow:4px 4px 4px 4px rgb(212, 183, 177); box-shadow:4px 4px 4px 4px rgb(212, 183, 177) }
```

Background

The CSS property to change the background color of an element to RGB 212, 183, 177 is called "background". The background property can be set on classes, ids or directly on the HTML element.

```
.background, #background, body{  
background: rgb(212, 183, 177) }
```

If only the background color should be changed can be used:

```
.background{ background-color: rgb(212,  
183, 177) }
```

This example shows the color as background, it is applied via the CSS property "background".

To optimize and compress your CSS code, you can use our [online CSS compressor and optimizer](#) based on csstidy. If you want to create a linear or radial gradient as background or border, check our [CSS Gradient Generator](#).

Hey! You found this booklet interesting? Support Converting Colors with the new Membership Option!

The pro membership hides all ads, plus gives you double the colors in the color bucket, and more awesome pro features!

[Learn more, Memberships starting at \\$2.50/m!](#)

**Follow me
on Twitter!**

@ConvertingColor