

Converting Colors

RGB(212, 60, 106)

Have a look what the booklet for
RGB(212, 60, 106) contains.

| | |
|--|----|
| RGB(212, 60, 106) | 3 |
| <i>Conversions</i> | 4 |
| <i>Details</i> | 6 |
| <i>Harmonies</i> | 11 |
| <i>Previews</i> | 23 |
| <i>Color Blindness Simulation</i> | 26 |
| <i>CSS Examples</i> | 29 |

Color

RGB(212, 60, 106)

Conversions

Conversions Part 1

| Format | Color |
|---------------|----------------------------|
| Hex | D43C6A |
| RGB | 212, 60, 106 |
| RGB Percent | 83%, 24%, 42% |
| CMY | 0.1686, 0.7647, 0.5843 |
| CMYK | 0.00, 0.72, 0.50, 0.17 |
| HSL | 342°, 64%, 53% |
| HSV | 342°, 72%, 83% |
| XYZ | 31.3688, 18.2694, 15.5087 |
| YIQ | 110.6920, 75.8260, 46.5300 |

Conversions

Conversions Part 2

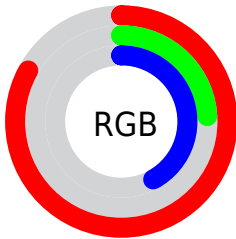
| Format | Color |
|-------------------------------------|-------------------------------|
| R_{YB} | 212, 60, 106 |
| Decimal | 13909098 |
| CIE _{Lab} | 49.82, 61.82, 9.04 |
| CIE _{LCh} | 50, 62.478, 8.316 |
| Yxy | 18.2694, 0.4815, 0.2804 |
| Android (android.graphics.Color) | 4292099178 (0xFFD43C6A) |
| YUV | 110.6920, -2.3132, 88.8471 |
| Hunter-Lab | 42.7427, 56.2010, 8.4072 |

Details

The RGB color **212, 60, 106** is a dark color, and the websafe version is hex **CC3366**. The color can be described as dark muted rose. A complement of this color would be **60, 212, 166**, and the grayscale version is **111, 111, 111**.

A 20% lighter version of the original color is **255, 118, 157**, and **152, 0, 59** is the 20% darker color. If you saturate the color by 10%, you get **212, 39, 91**, and if you desaturate by 10%, it is **212, 81, 121**.

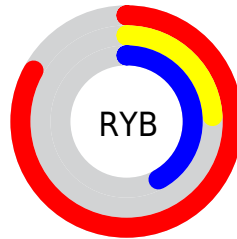
Distribution



Red (83%)

Green (24%)

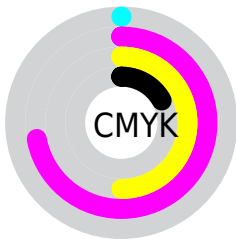
Blue (42%)



Red (83%)

Yellow (24%)

Blue (42%)

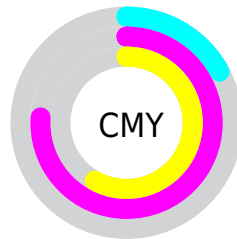


Cyan (0%)

Magenta (72%)

Yellow (50%)

Black (17%)



Cyan (17%)


Magenta (76%)

Yellow (58%)

Brightness & Saturation Gradients

These gradients show how the RGB color 212, 60, 106 changes by changing the brightness by 10 percent. The first figure shows a shift by +10% for each color and the second figure -10%.

Similar to the brightness gradients but the following saturation gradients show a change of the RGB color 212, 60, 106 by changing the saturation by 10% instead.

 212, 60, 106

 212, 60, 106

255, 255, 255

 182, 24, 82

 255, 118, 157

 152, 0, 59

 255, 147, 184

 122, 0, 38

 255, 175, 211

 92, 0, 17

 255, 204, 240

 66, 0, 3

 255, 234, 255

 32, 0, 1

 0, 0, 0

 212, 60, 106

 212, 60, 106

 212, 39, 91

 212, 81, 121

■ 212, 18, 76

■ 212, 102, 136

■ 212, 0, 64

■ 212, 124, 150

■ 212, 145, 165

■ 212, 166, 180

■ 212, 187, 195

■ 212, 208, 209

■ 212, 230, 224

■ 212, 251, 239

Harmonies

Analogous

The Analogous color harmony consists of three colors that are next to each other on the color wheel.



192, 71, 159



212, 60, 106



203, 77, 55

Triad

The Triadic color harmony groups three colors that are evenly spaced from another and form a triangle on the color wheel.



212, 60, 106



71, 133, 21



0, 135, 217

Complementary

The Complementary color scheme is a pair of colors which are on the opposite of each other on the color wheel.



212, 60, 106



60, 212, 166

Split Complementary

Split-complementary colors differ from the complementary color scheme. The scheme consists of three colors, the original color and two neighbors of the complement color.



0, 141, 183



212, 60, 106



0, 140, 77

Square

The Square scheme is like the rectangle color scheme, but the four colors are evenly spaced on the color wheel.



212, 60, 106



129, 121, 0



0, 143, 132



0, 120, 224

Rectangle

The Rectangle color scheme consists of four colors that form a rectangle on the color wheel.



212, 60, 106



185, 93, 21



0, 143, 132



0, 138, 209

Sweetspot

The Sweet Spot groups the original color and five complimentary colors.



212, 60, 106



255, 199, 216



164, 60, 212



128, 94, 104



0, 0, 0



128, 128, 128

Same Dimension

The Same Dimension uses a secret algorithm to generate beautiful new colors.



212, 60, 106



255, 36, 102



212, 88, 60



107, 96, 100



171, 0, 52



43, 0, 13

Inverse Universe

The Inverse Universe completely reimagines the original color for something new.



212, 60, 106



255, 36, 102



60, 184, 212



107, 96, 100



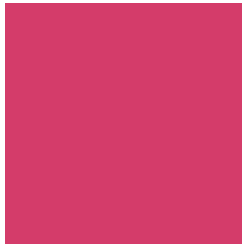
171, 0, 52



43, 0, 13

Previews

White Background



This preview shows how the RGB color 212, 60, 106 looks on a white background.

Color Contrast Check

Large Text (above 18pt) WCAG AA ✓ Pass

Any Text WCAG AA ✓ Pass

Large Text (above 18pt) WCAG AAA ✓ Pass

Any Text WCAG AAA × Fail

Black Background



This preview shows how the RGB color 212, 60, 106 looks on a black background.

Color Contrast Check

Large Text (above 18pt) WCAG AA ✓ Pass

Any Text WCAG AA ✓ Pass

Large Text (above 18pt) WCAG AAA ✓ Pass

Any Text WCAG AAA × Fail

If you want to check with other color combinations, try the [Color Contrast Checker](#).

RGB 212, 60, 106 Background



This preview shows how black text looks on a background with the RGB color 212, 60, 106.

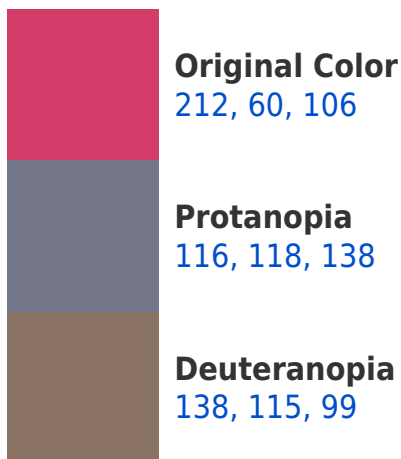


This preview shows how white text looks on a background with the RGB color 212, 60, 106.

Color Blindness Simulation

Color vision deficiency is a very complex topic, and I could not describe the different causes any better than Wikipedia does, so if you want to learn more, you should check out their [article about color blindness](#).

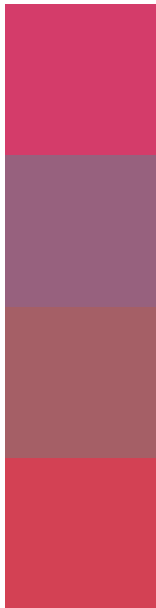
Dichromacy





Tritanopia
210, 68, 71

Trichromacy



Original Color

212, 60, 106

Protanomaly

151, 97, 126

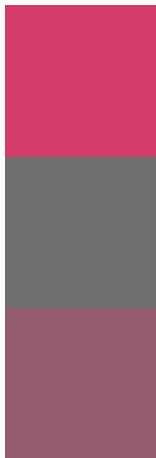
Deuteranomaly

165, 95, 102

Tritanomaly

211, 65, 84

Monochromacy



Original Color

212, 60, 106

Achromatopsia

111, 111, 111

Achromatomaly

148, 92, 109

CSS Examples

Text

The CSS property to change the color of the text to RGB 212, 60, 106 is called "color". The color property can be set on classes, ids or directly on the HTML element.

This example shows how text in the color `rgb(212, 60, 106)` looks like.

```
.text, #text, p{  
    color:rgb(212, 60, 106)  
}
```

If you want to add a text shadow in that color use the text-shadow property, you can generate a text shadow directly with our [CSS Text Shadow Generator](#).

Here you see how black text with a 4 pixel rgb(212, 60, 106) colored shadow looks like.

```
.shadow{ text-shadow: 4px 4px 2px rgb(212, 60, 106) }
```

Border

The CSS property to change the border of an element to RGB 212, 60, 106 is called "border". The border property can be set on classes, ids or directly on the HTML element.

This example shows the color as border, it can be applied via the CSS property "border" or "border-color".

```
.border, #border, table{ border:4px solid rgb(212, 60, 106) }
```

If only the border color should be changed use the property `border-color`.

```
.border{ border-color:rgb(212, 60, 106) }
```

If you want to add a box shadow in that color use:

Here you see how a box with a 4 pixel `rgb(212, 60, 106)` colored shadow looks like.

```
.boxshadow{ -moz-box-shadow:4px 4px 4px  
4px rgb(212, 60, 106); -webkit-box-  
shadow:4px 4px 4px 4px rgb(212, 60, 106);  
box-shadow:4px 4px 4px 4px rgb(212, 60,  
106) }
```

Background

The CSS property to change the background color of an element to RGB 212, 60, 106 is called "background". The background property can be set on classes, ids or directly on the HTML element.

```
.background, #background, body{  
background: rgb(212, 60, 106) }
```

If only the background color should be changed can be used:

```
.background{ background-color: rgb(212, 60,  
106) }
```

This example shows the color as background, it is applied via the CSS property "background".

To optimize and compress your CSS code, you can use our [online CSS compressor and optimizer](#) based on csstidy. If you want to create a linear or radial gradient as background or border, check our [CSS Gradient Generator](#).

Hey! You found this booklet interesting? Support Converting Colors with the new Membership Option!

The pro membership hides all ads, plus gives you double the colors in the color bucket, and more awesome pro features!

[Learn more, Memberships starting at \\$2.50/m!](#)

**Follow me
on Twitter!**

@ConvertingColor