

Converting Colors

RGB(212, 77, 134)

Have a look what the booklet for
RGB(212, 77, 134) contains.

RGB(212, 77, 134)	3
<i>Conversions</i>	4
<i>Details</i>	6
<i>Harmonies</i>	11
<i>Previews</i>	23
<i>Color Blindness Simulation</i>	26
<i>CSS Examples</i>	29

Color

RGB(212, 77, 134)

Conversions

Conversions Part 1

Format	Color
Hex	D44D86
RGB	212, 77, 134
RGB Percent	83%, 30%, 53%
CMY	0.1686, 0.6980, 0.4745
CMYK	0.00, 0.64, 0.37, 0.17
HSL	335°, 61%, 57%
HSV	335°, 64%, 83%
XYZ	34.1083, 21.0260, 24.8150
YIQ	123.8630, 62.1630, 46.3470

Conversions

Conversions Part 2

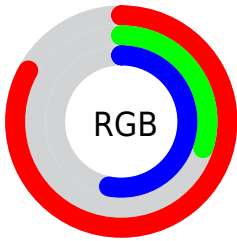
Format	Color
R_{YB}	212, 77, 134
Decimal	13913478
CIE Lab	52.98, 57.99, -3.24
CIE LCh	53, 58.084, 356.805
Yxy	21.0260, 0.4266, 0.2630
Android (android.graphics.Color)	4292103558 (0xFFD44D86)
YUV	123.8630, 4.9975, 77.2961
Hunter-Lab	45.8542, 52.5314, 0.0118

Details

The RGB color **212, 77, 134** is a dark color, and the websafe version is hex **CC3366**. The color can be described as middle muted rose. A complement of this color would be **77, 212, 155**, and the grayscale version is **124, 124, 124**.

A 20% lighter version of the original color is **255, 133, 187**, and **153, 5, 85** is the 20% darker color. If you saturate the color by 10%, you get **212, 56, 122**, and if you desaturate by 10%, it is **212, 98, 146**.

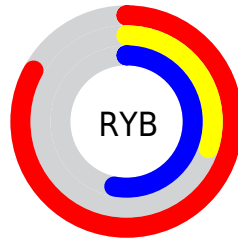
Distribution



Red (83%)

Green (30%)

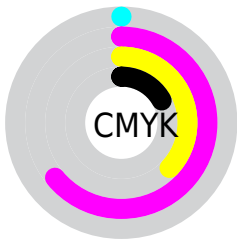
Blue (53%)



Red (83%)

Yellow (30%)

Blue (53%)

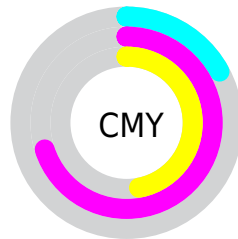


Cyan (0%)

Magenta (64%)

Yellow (37%)

Black (17%)



Cyan (17%)

Magenta (70%)


Yellow (47%)

Brightness & Saturation Gradients

These gradients show how the RGB color 212, 77, 134 changes by changing the brightness by 10 percent. The first figure shows a shift by +10% for each color and the second figure -10%.

Similar to the brightness gradients but the following saturation gradients show a change of the RGB color 212, 77, 134 by changing the saturation by 10% instead.

 212, 77, 134

 212, 77, 134

255, 255, 255

 182, 47, 109

 255, 133, 187

 153, 5, 85

 255, 161, 215

 124, 0, 62

 255, 190, 243

 96, 0, 40

 255, 219, 255

 69, 0, 19

 255, 248, 255

 41, 0, 1

 0, 0, 0

 212, 77, 134

 212, 77, 134

 212, 56, 122

 212, 98, 146

■ 212, 35, 110

■ 212, 119, 158

■ 212, 13, 97

■ 212, 141, 171

■ 212, 0, 90

■ 212, 162, 183

■ 212, 183, 195

■ 212, 204, 207

■ 212, 225, 220

■ 212, 247, 232

■ 212, 255, 244

Harmonies

Analogous

The Analogous color harmony consists of three colors that are next to each other on the color wheel.



181, 93, 182



212, 77, 134



214, 82, 85

Triad

The Triadic color harmony groups three colors that are evenly spaced from another and form a triangle on the color wheel.



212, 77, 134



107, 137, 24



0, 145, 210

Complementary

The Complementary color scheme is a pair of colors which are on the opposite of each other on the color wheel.



212, 77, 134



77, 212, 155

Split Complementary

Split-complementary colors differ from the complementary color scheme. The scheme consists of three colors, the original color and two neighbors of the complement color.



0, 149, 170



212, 77, 134



27, 145, 69

Square

The Square scheme is like the rectangle color scheme, but the four colors are evenly spaced on the color wheel.



212, 77, 134



156, 122, 4



0, 149, 119



0, 134, 227

Rectangle

The Rectangle color scheme consists of four colors that form a rectangle on the color wheel.



212, 77, 134



202, 95, 55



0, 149, 119



0, 147, 198

Sweetspot

The Sweet Spot groups the original color and five complimentary colors.



212, 77, 134



255, 207, 227



153, 77, 212



128, 98, 111



0, 0, 0



128, 128, 128

Same Dimension

The Same Dimension uses a secret algorithm to generate beautiful new colors.



212, 77, 134



255, 61, 143



212, 86, 77



107, 96, 101



171, 0, 72



43, 0, 18

Inverse Universe

The Inverse Universe completely reimagines the original color for something new.



212, 77, 134



255, 61, 143



77, 203, 212



107, 96, 101



171, 0, 72



43, 0, 18

Previews

White Background



This preview shows how the RGB color 212, 77, 134 looks on a white background.

Color Contrast Check

Large Text (above 18pt) WCAG AA ✓ Pass

Any Text WCAG AA ✗ Fail

Large Text (above 18pt) WCAG AAA ✗ Fail

Any Text WCAG AAA ✗ Fail

Black Background



This preview shows how the RGB color 212, 77, 134 looks on a black background.

Color Contrast Check

Large Text (above 18pt) WCAG AA ✓ Pass

Any Text WCAG AA ✓ Pass

Large Text (above 18pt) WCAG AAA ✓ Pass

Any Text WCAG AAA × Fail

If you want to check with other color combinations, try the [Color Contrast Checker](#).

RGB 212, 77, 134 Background



This preview shows how black text looks on a background with the RGB color 212, 77, 134.

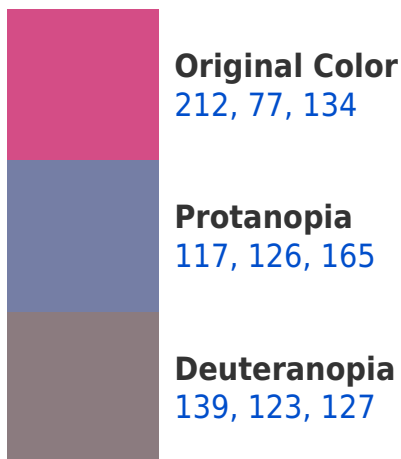


This preview shows how white text looks on a background with the RGB color 212, 77, 134.

Color Blindness Simulation

Color vision deficiency is a very complex topic, and I could not describe the different causes any better than Wikipedia does, so if you want to learn more, you should check out their [article about color blindness](#).

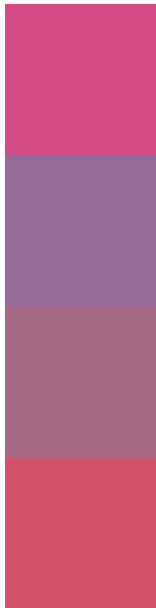
Dichromacy





Tritanopia
209, 86, 92

Trichromacy



Original Color

212, 77, 134

Protanomaly

152, 108, 154

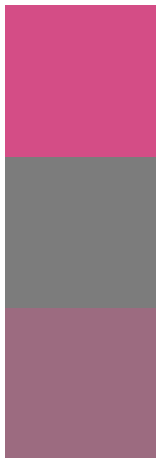
Deuteranomaly

166, 106, 130

Tritanomaly

210, 83, 107

Monochromacy



Original Color

212, 77, 134

Achromatopsia

124, 124, 124

Achromatomaly

156, 107, 128

CSS Examples

Text

The CSS property to change the color of the text to RGB 212, 77, 134 is called "color". The color property can be set on classes, ids or directly on the HTML element.

This example shows how text in the color `rgb(212, 77, 134)` looks like.

```
.text, #text, p{  
    color:rgb(212, 77, 134)  
}
```

If you want to add a text shadow in that color use the text-shadow property, you can generate a text shadow directly with our [CSS Text Shadow Generator](#).

Here you see how black text with a 4 pixel rgb(212, 77, 134) colored shadow looks like.

```
.shadow{ text-shadow: 4px 4px 2px rgb(212, 77, 134) }
```

Border

The CSS property to change the border of an element to RGB 212, 77, 134 is called "border". The border property can be set on classes, ids or directly on the HTML element.

This example shows the color as border, it can be applied via the CSS property "border" or "border-color".

```
.border, #border, table{ border:4px solid rgb(212, 77, 134) }
```

If only the border color should be changed use the property `border-color`.

```
.border{ border-color:rgb(212, 77, 134) }
```

If you want to add a box shadow in that color use:

Here you see how a box with a 4 pixel `rgb(212, 77, 134)` colored shadow looks like.

```
.boxshadow{ -moz-box-shadow:4px 4px 4px  
4px rgb(212, 77, 134); -webkit-box-  
shadow:4px 4px 4px 4px rgb(212, 77, 134);  
box-shadow:4px 4px 4px 4px rgb(212, 77,  
134) }
```

Background

The CSS property to change the background color of an element to RGB 212, 77, 134 is called "background". The background property can be set on classes, ids or directly on the HTML element.

```
.background, #background, body{  
background: rgb(212, 77, 134) }
```

If only the background color should be changed can be used:

```
.background{ background-color: rgb(212, 77,  
134) }
```

This example shows the color as background, it is applied via the CSS property "background".

To optimize and compress your CSS code, you can use our [online CSS compressor and optimizer](#) based on csstidy. If you want to create a linear or radial gradient as background or border, check our [CSS Gradient Generator](#).

Hey! You found this booklet interesting? Support Converting Colors with the new Membership Option!

The pro membership hides all ads, plus gives you double the colors in the color bucket, and more awesome pro features!

[Learn more, Memberships starting at \\$2.50/m!](#)

**Follow me
on Twitter!**

@ConvertingColor