

Converting Colors

RGB(213, 167, 164)

Have a look what the booklet for
RGB(213, 167, 164) contains.

RGB(213, 167, 164)	3
<i>Conversions</i>	4
<i>Details</i>	6
<i>Harmonies</i>	11
<i>Previews</i>	23
<i>Color Blindness Simulation</i>	26
<i>CSS Examples</i>	29

Color

RGB(213, 167, 164)

Conversions

Conversions Part 1

Format	Color
Hex	D5A7A4
RGB	213, 167, 164
RGB Percent	84%, 65%, 64%
CMY	0.1647, 0.3451, 0.3569
CMYK	0.00, 0.22, 0.23, 0.16
HSL	4°, 37%, 74%
HSV	4°, 23%, 84%
XYZ	47.9601, 44.4639, 41.1766
YIQ	180.4120, 28.3790, 8.8190

Conversions

Conversions Part 2

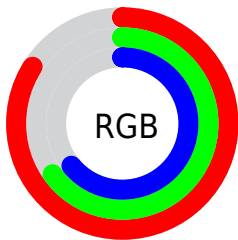
Format	Color
R _Y B	213, 167, 164
Decimal	14002084
CIE Lab	72.54, 16.43, 8.02
CIE LCh	73, 18.287, 26.013
Yxy	44.4639, 0.3590, 0.3328
Android (android.graphics.Color)	4292192164 (0xFFD5A7A4)
YUV	180.4120, -8.0911, 28.5797
Hunter-Lab	66.6813, 11.6929, 10.0645

Details

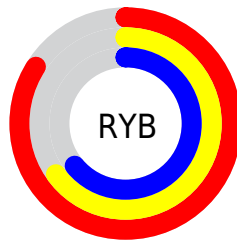
The RGB color **213, 167, 164** is a light color, and the websafe version is hex **CC9999**. A complement of this color would be **164, 210, 213**, and the grayscale version is **180, 180, 180**.

A 20% lighter version of the original color is **255, 222, 219**, and **158, 115, 112** is the 20% darker color. If you saturate the color by 10%, you get **213, 147, 143**, and if you desaturate by 10%, it is **213, 187, 185**.

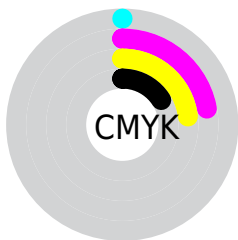
Distribution



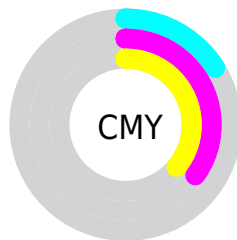
- Red (84%)
- Green (65%)
- Blue (64%)



- Red (84%)
- Yellow (65%)
- Blue (64%)



- Cyan (0%)
- Magenta (22%)
- Yellow (23%)
- Black (16%)



- Cyan (16%)
- Magenta (35%)
- Yellow (36%)

Brightness & Saturation Gradients

These gradients show how the RGB color 213, 167, 164 changes by changing the brightness by 10 percent. The first figure shows a shift by +10% for each color and the second figure -10%.

Similar to the brightness gradients but the following saturation gradients show a change of the RGB color 213, 167, 164 by changing the saturation by 10% instead.

 213, 167, 164

255, 255, 255


 255, 222, 219

 255, 251, 247


 213, 167, 164

 185, 141, 138

 158, 115, 112

 131, 90, 88

 105, 66, 65

 80, 44, 43

 56, 23, 22

 36, 0, 0


 0, 0, 0

 213, 167, 164

 213, 167, 164

 213, 147, 143


 213, 187, 185

 213, 127, 121

 213, 207, 207

 213, 107, 100

 213, 227, 228

 213, 87, 79

 213, 247, 249

 213, 67, 58

 213, 255, 255

 213, 47, 36

 213, 27, 15

 213, 13, 0

Harmonies

Analogous

The Analogous color harmony consists of three colors that are next to each other on the color wheel.



210, 166, 181



213, 167, 164



207, 171, 151

Triad

The Triadic color harmony groups three colors that are evenly spaced from another and form a triangle on the color wheel.



213, 167, 164



156, 185, 159



156, 180, 211

Complementary

The Complementary color scheme is a pair of colors which are on the opposite of each other on the color wheel.



213, 167, 164



164, 210, 213

Split Complementary

Split-complementary colors differ from the complementary color scheme. The scheme consists of three colors, the original color and two neighbors of the complement color.



139, 185, 205



213, 167, 164



140, 188, 175

Square

The Square scheme is like the rectangle color scheme, but the four colors are evenly spaced on the color wheel.



213, 167, 164



175, 181, 148



133, 187, 192



178, 174, 208

Rectangle

The Rectangle color scheme consists of four colors that form a rectangle on the color wheel.



213, 167, 164



198, 174, 146



133, 187, 192



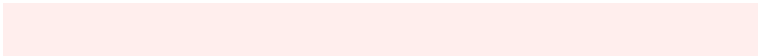
150, 182, 210

Sweetspot

The Sweet Spot groups the original color and five complimentary colors.



213, 167, 164



255, 238, 237



213, 164, 211



128, 118, 117



0, 0, 0



128, 128, 128

Same Dimension

The Same Dimension uses a secret algorithm to generate beautiful new colors.



213, 167, 164



255, 188, 184



213, 191, 164



107, 97, 96



171, 10, 0



43, 3, 0

Inverse Universe

The Inverse Universe completely reimagines the original color for something new.



164, 210, 213



184, 251, 255



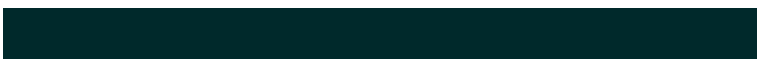
164, 186, 213



96, 106, 107



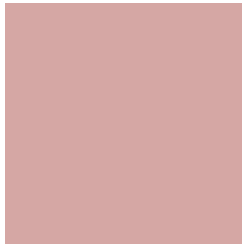
0, 160, 171



0, 41, 43

Previews

White Background



This preview shows how the RGB color 213, 167, 164 looks on a white background.

Color Contrast Check

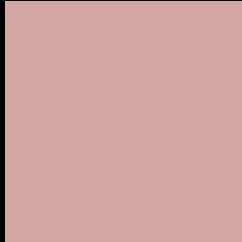
Large Text (above 18pt) WCAG AA × Fail

Any Text WCAG AA × Fail

Large Text (above 18pt) WCAG AAA × Fail

Any Text WCAG AAA × Fail

Black Background



This preview shows how the RGB color 213, 167, 164 looks on a black background.

Color Contrast Check

Large Text (above 18pt) WCAG AA ✓ Pass

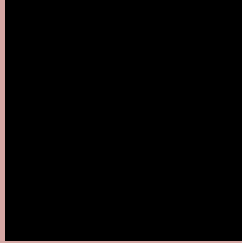
Any Text WCAG AA ✓ Pass

Large Text (above 18pt) WCAG AAA ✓ Pass

Any Text WCAG AAA ✓ Pass

If you want to check with other color combinations, try the [Color Contrast Checker](#).

RGB 213, 167, 164 Background



This preview shows how black text looks on a background with the RGB color 213, 167, 164.



This preview shows how white text looks on a background with the RGB color 213, 167, 164.

Color Blindness Simulation

Color vision deficiency is a very complex topic, and I could not describe the different causes any better than Wikipedia does, so if you want to learn more, you should check out their [article about color blindness](#).


Dichromacy



Original Color
213, 167, 164

Protanopia
183, 177, 170

Deuteranopia
201, 172, 163



Tritanopia

215, 165, 178

Trichromacy



Original Color
213, 167, 164

Protanomaly
194, 173, 168

Deuteranomaly
205, 170, 163

Tritanomaly
214, 166, 173

Monochromacy



Original Color
213, 167, 164

Achromatopsia
180, 180, 180

Achromatomaly
192, 175, 174

CSS Examples

Text

The CSS property to change the color of the text to RGB 213, 167, 164 is called "color". The color property can be set on classes, ids or directly on the HTML element.

This example shows how text in the color `rgb(213, 167, 164)` looks like.

```
.text, #text, p{  
    color:rgb(213, 167, 164)  
}
```

If you want to add a text shadow in that color use the text-shadow property, you can generate a text shadow directly with our [CSS Text Shadow Generator](#).

Here you see how black text with a 4 pixel rgb(213, 167, 164) colored shadow looks like.

```
.shadow{ text-shadow: 4px 4px 2px rgb(213, 167, 164) }
```

Border

The CSS property to change the border of an element to RGB 213, 167, 164 is called "border". The border property can be set on classes, ids or directly on the HTML element.

This example shows the color as border, it can be applied via the CSS property "border" or "border-color".

```
.border, #border, table{ border:4px solid rgb(213, 167, 164) }
```

If only the border color should be changed use the property `border-color`.

```
.border{ border-color:rgb(213, 167, 164) }
```

If you want to add a box shadow in that color use:

Here you see how a box with a 4 pixel `rgb(213, 167, 164)` colored shadow looks like.

```
.boxshadow{ -moz-box-shadow:4px 4px 4px  
4px rgb(213, 167, 164); -webkit-box-  
shadow:4px 4px 4px 4px rgb(213, 167, 164);  
box-shadow:4px 4px 4px 4px rgb(213, 167,  
164) }
```

Background

The CSS property to change the background color of an element to RGB 213, 167, 164 is called "background". The background property can be set on classes, ids or directly on the HTML element.

```
.background, #background, body{  
background: rgb(213, 167, 164) }
```

If only the background color should be changed can be used:

```
.background{ background-color: rgb(213,  
167, 164) }
```

This example shows the color as background, it is applied via the CSS property "background".

To optimize and compress your CSS code, you can use our [online CSS compressor and optimizer](#) based on csstidy. If you want to create a linear or radial gradient as background or border, check our [CSS Gradient Generator](#).

Hey! You found this booklet interesting? Support Converting Colors with the new Membership Option!

The pro membership hides all ads, plus gives you double the colors in the color bucket, and more awesome pro features!

[Learn more, Memberships starting at \\$2.50/m!](#)

**Follow me
on Twitter!**

@ConvertingColor