

Converting Colors

RGB(213, 179, 178)

Have a look what the booklet for
RGB(213, 179, 178) contains.

RGB(213, 179, 178)	3
<i>Conversions</i>	4
<i>Details</i>	6
<i>Harmonies</i>	11
<i>Previews</i>	23
<i>Color Blindness Simulation</i>	26
<i>CSS Examples</i>	29

Color

RGB(213, 179, 178)

Conversions

Conversions Part 1

Format	Color
Hex	D5B3B2
RGB	213, 179, 178
RGB Percent	84%, 70%, 70%
CMY	0.1647, 0.2980, 0.3020
CMYK	0.00, 0.16, 0.16, 0.16
HSL	2°, 29%, 77%
HSV	2°, 16%, 84%
XYZ	51.5966, 49.6007, 48.9739
YIQ	189.0520, 20.5850, 6.8970

Conversions

Conversions Part 2

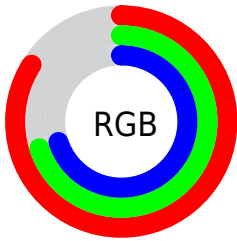
Format	Color
R_{YB}	213, 179, 178
Decimal	14005170
CIE _{Lab}	75.82, 12.09, 5.08
CIE _{LCh}	76, 13.111, 22.791
Yxy	49.6007, 0.3436, 0.3303
Android (android.graphics.Color)	4292195250 (0xFFD5B3B2)
YUV	189.0520, -5.4486, 21.0024
Hunter-Lab	70.4278, 7.5235, 8.0704

Details

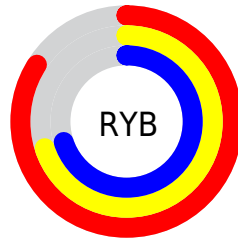
The RGB color **213, 179, 178** is a light color, and the websafe version is hex **CC9999**. A complement of this color would be **178, 212, 213**, and the grayscale version is **189, 189, 189**.

A 20% lighter version of the original color is **255, 235, 234**, and **158, 126, 125** is the 20% darker color. If you saturate the color by 10%, you get **213, 158, 157**, and if you desaturate by 10%, it is **213, 200, 199**.

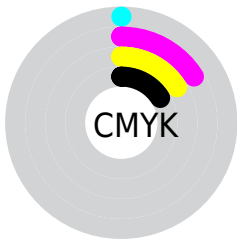
Distribution



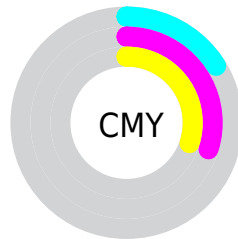
- Red (84%)
- Green (70%)
- Blue (70%)



- Red (84%)
- Yellow (70%)
- Blue (70%)



- Cyan (0%)
- Magenta (16%)
- Yellow (16%)
- Black (16%)



- Cyan (16%)
- Magenta (30%)
- Yellow (30%)

Brightness & Saturation Gradients

These gradients show how the RGB color 213, 179, 178 changes by changing the brightness by 10 percent. The first figure shows a shift by +10% for each color and the second figure -10%.

Similar to the brightness gradients but the following saturation gradients show a change of the RGB color 213, 179, 178 by changing the saturation by 10% instead.

 213, 179, 178


 213, 179, 178

255, 255, 255


 185, 152, 151


 255, 235, 234

 158, 126, 125

 132, 101, 100

 106, 77, 77

 81, 54, 54

 58, 33, 33

 36, 11, 9

 0, 0, 0

 213, 179, 178

 213, 179, 178

 213, 158, 157


 213, 200, 199

 213, 138, 135

 213, 220, 221


 213, 117, 114

 213, 241, 242

 213, 96, 93

 213, 255, 255

 213, 76, 71

 213, 55, 50

 213, 34, 29

 213, 13, 8

 213, 6, 0

Harmonies

Analogous

The Analogous color harmony consists of three colors that are next to each other on the color wheel.



210, 179, 190



213, 179, 178



209, 181, 168

Triad

The Triadic color harmony groups three colors that are evenly spaced from another and form a triangle on the color wheel.



213, 179, 178



173, 192, 172



171, 189, 211

Complementary

The Complementary color scheme is a pair of colors which are on the opposite of each other on the color wheel.



213, 179, 178



178, 212, 213

Split Complementary

Split-complementary colors differ from the complementary color scheme. The scheme consists of three colors, the original color and two neighbors of the complement color.



160, 192, 206



213, 179, 178



161, 194, 183

Square

The Square scheme is like the rectangle color scheme, but the four colors are evenly spaced on the color wheel.



213, 179, 178



187, 189, 165



156, 194, 196



186, 185, 209

Rectangle

The Rectangle color scheme consists of four colors that form a rectangle on the color wheel.



213, 179, 178



203, 184, 164



156, 194, 196



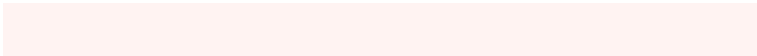
166, 190, 210

Sweetspot

The Sweet Spot groups the original color and five complimentary colors.



213, 179, 178



255, 243, 242



213, 178, 212



128, 120, 120



0, 0, 0



128, 128, 128

Same Dimension

The Same Dimension uses a secret algorithm to generate beautiful new colors.



213, 179, 178



255, 205, 204



213, 196, 178



107, 97, 96



171, 5, 0



43, 1, 0

Inverse Universe

The Inverse Universe completely reimagines the original color for something new.



178, 212, 213



204, 254, 255



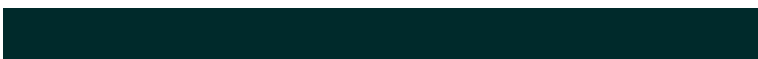
178, 195, 213



96, 107, 107



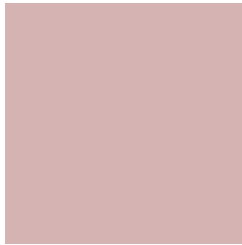
0, 166, 171



0, 42, 43

Previews

White Background



This preview shows how the RGB color 213, 128, 122 looks on a white background.

Color Contrast Check

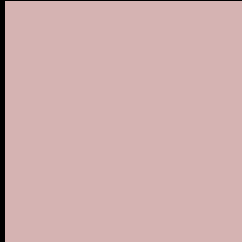
Large Text (above 18pt) WCAG AA × Fail

Any Text WCAG AA × Fail

Large Text (above 18pt) WCAG AAA × Fail

Any Text WCAG AAA × Fail

Black Background



This preview shows how the RGB color 213, 179, 178 looks on a black background.

Color Contrast Check

Large Text (above 18pt) WCAG AA ✓ Pass

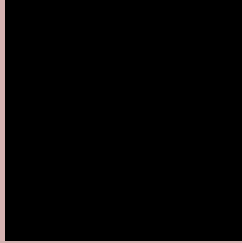
Any Text WCAG AA ✓ Pass

Large Text (above 18pt) WCAG AAA ✓ Pass

Any Text WCAG AAA ✓ Pass

If you want to check with other color combinations, try the [Color Contrast Checker](#).

RGB 213, 179, 178 Background



This preview shows how black text looks on a background with the RGB color 213, 179, 178.



This preview shows how white text looks on a background with the RGB color 213, 179, 178.

Color Blindness Simulation

Color vision deficiency is a very complex topic, and I could not describe the different causes any better than Wikipedia does, so if you want to learn more, you should check out their [article about color blindness](#).

Dichromacy



Original Color
213, 179, 178

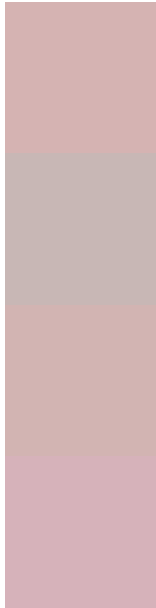
Protanopia
192, 186, 182

Deuteranopia
209, 181, 178



Tritanopia
215, 177, 191

Trichromacy



Original Color

213, 179, 178

Protanomaly

200, 183, 181

Deuteranomaly

210, 180, 178

Tritanomaly

214, 178, 186

Monochromacy



Original Color

213, 179, 178

Achromatopsia

189, 189, 189

Achromatomaly

198, 185, 185

CSS Examples

Text

The CSS property to change the color of the text to RGB 213, 179, 178 is called "color". The color property can be set on classes, ids or directly on the HTML element.

This example shows how text in the color `rgb(213, 179, 178)` looks like.

```
.text, #text, p{  
    color:rgb(213, 179, 178)  
}
```

If you want to add a text shadow in that color use the text-shadow property, you can generate a text shadow directly with our [CSS Text Shadow Generator](#).

Here you see how black text with a 4 pixel rgb(213, 179, 178) colored shadow looks like.

```
.shadow{ text-shadow: 4px 4px 2px rgb(213, 179, 178) }
```

Border

The CSS property to change the border of an element to RGB 213, 179, 178 is called "border". The border property can be set on classes, ids or directly on the HTML element.

This example shows the color as border, it can be applied via the CSS property "border" or "border-color".

```
.border, #border, table{ border:4px solid rgb(213, 179, 178) }
```

If only the border color should be changed use the property `border-color`.

```
.border{ border-color:rgb(213, 179, 178) }
```

If you want to add a box shadow in that color use:

Here you see how a box with a 4 pixel `rgb(213, 179, 178)` colored shadow looks like.

```
.boxshadow{ -moz-box-shadow:4px 4px 4px  
4px rgb(213, 179, 178); -webkit-box-  
shadow:4px 4px 4px 4px rgb(213, 179, 178);  
box-shadow:4px 4px 4px 4px rgb(213, 179,  
178) }
```

Background

The CSS property to change the background color of an element to RGB 213, 179, 178 is called "background". The background property can be set on classes, ids or directly on the HTML element.

```
.background, #background, body{  
background: rgb(213, 179, 178) }
```

If only the background color should be changed can be used:

```
.background{ background-color: rgb(213,  
179, 178) }
```

This example shows the color as background, it is applied via the CSS property "background".

To optimize and compress your CSS code, you can use our [online CSS compressor and optimizer](#) based on csstidy. If you want to create a linear or radial gradient as background or border, check our [CSS Gradient Generator](#).

Hey! You found this booklet interesting? Support Converting Colors with the new Membership Option!

The pro membership hides all ads, plus gives you double the colors in the color bucket, and more awesome pro features!

[Learn more, Memberships starting at \\$2.50/m!](#)

**Follow me
on Twitter!**

@ConvertingColor