

Converting Colors

RGB(213, 194, 189)

Have a look what the booklet for
RGB(213, 194, 189) contains.

RGB(213, 194, 189)	3
<i>Conversions</i>	4
<i>Details</i>	6
<i>Harmonies</i>	11
<i>Previews</i>	23
<i>Color Blindness Simulation</i>	26
<i>CSS Examples</i>	29

Color

RGB(213, 194, 189)

Conversions

Conversions Part 1

Format	Color
Hex	D5C2BD
RGB	213, 194, 189
RGB Percent	84%, 76%, 74%
CMY	0.1647, 0.2392, 0.2588
CMYK	0.00, 0.09, 0.11, 0.16
HSL	12°, 22%, 79%
HSV	12°, 11%, 84%
XYZ	55.9177, 56.4038, 56.0840
YIQ	199.1110, 12.9290, 2.4730

Conversions

Conversions Part 2

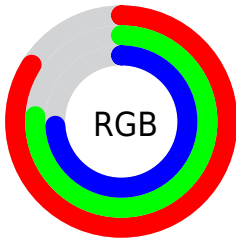
Format	Color
R _Y B	213, 195, 189
Decimal	14009021
CIE Lab	79.84, 5.84, 4.93
CIE LCh	80, 7.643, 40.128
Yxy	56.4038, 0.3320, 0.3349
Android (android.graphics.Color)	4292199101 (0xFFD5C2BD)
YUV	199.1110, -4.9847, 12.1807
Hunter-Lab	75.1025, 1.4731, 8.2960

Details

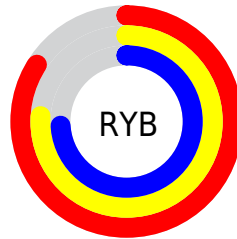
The RGB color **213, 194, 189** is a light color, and the websafe version is hex **CCCCCC**. A complement of this color would be **189, 208, 213**, and the grayscale version is **199, 199, 199**.

A 20% lighter version of the original color is **255, 250, 245**, and **158, 140, 136** is the 20% darker color. If you saturate the color by 10%, you get **213, 177, 168**, and if you desaturate by 10%, it is **213, 211, 210**.

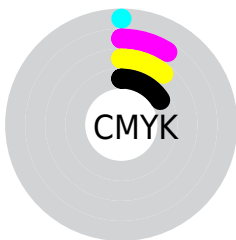
Distribution



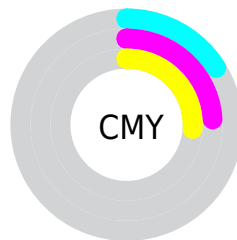
- Red (84%)
- Green (76%)
- Blue (74%)



- Red (84%)
- Yellow (76%)
- Blue (74%)



- Cyan (0%)
- Magenta (9%)
- Yellow (11%)
- Black (16%)



- Cyan (16%)
- Magenta (24%)
- Yellow (26%)

Brightness & Saturation Gradients

These gradients show how the RGB color 213, 194, 189 changes by changing the brightness by 10 percent. The first figure shows a shift by +10% for each color and the second figure -10%.

Similar to the brightness gradients but the following saturation gradients show a change of the RGB color 213, 194, 189 by changing the saturation by 10% instead.

 213, 194, 189


255, 255, 255

 255, 250, 245

 213, 194, 189

 185, 167, 162

 158, 140, 136

 132, 115, 110

 107, 90, 86

 82, 67, 63

 59, 45, 41

 37, 24, 21

 13, 0, 0

 0, 0, 0

 213, 194, 189

 213, 194, 189

 213, 177, 168

 213, 211, 210

 213, 160, 146


 213, 228, 232

 213, 143, 125


 213, 245, 253

 213, 127, 104

 213, 255, 255

 213, 110, 83

 213, 93, 61

 213, 76, 40

 213, 59, 19

 213, 44, 0

Harmonies

Analogous

The Analogous color harmony consists of three colors that are next to each other on the color wheel.



213, 193, 196



213, 194, 189



209, 196, 185

Triad

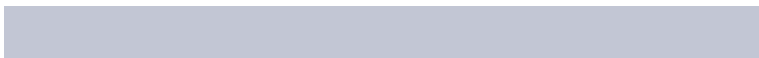
The Triadic color harmony groups three colors that are evenly spaced from another and form a triangle on the color wheel.



213, 194, 189



186, 202, 193



194, 198, 212

Complementary

The Complementary color scheme is a pair of colors which are on the opposite of each other on the color wheel.



213, 194, 189



189, 208, 213

Split Complementary

Split-complementary colors differ from the complementary color scheme. The scheme consists of three colors, the original color and two neighbors of the complement color.



186, 200, 211



213, 194, 189



181, 202, 200

Square

The Square scheme is like the rectangle color scheme, but the four colors are evenly spaced on the color wheel.



213, 194, 189



193, 200, 187



181, 202, 207



202, 195, 209

Rectangle

The Rectangle color scheme consists of four colors that form a rectangle on the color wheel.



213, 194, 189



204, 197, 184



181, 202, 207



191, 198, 212

Sweetspot

The Sweet Spot groups the original color and five complimentary colors.



213, 194, 189



255, 249, 247



213, 189, 208



128, 123, 122



0, 0, 0



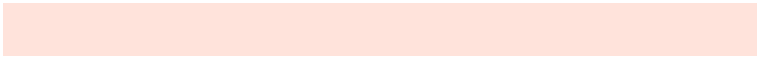
128, 128, 128

Same Dimension

The Same Dimension uses a secret algorithm to generate beautiful new colors.



213, 194, 189



255, 227, 219



213, 206, 189



107, 99, 96



171, 36, 0



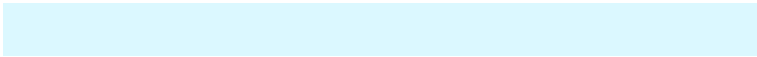
43, 9, 0

Inverse Universe

The Inverse Universe completely reimagines the original color for something new.



189, 208, 213



219, 248, 255



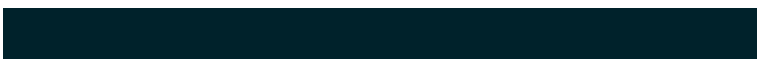
189, 196, 213



96, 105, 107



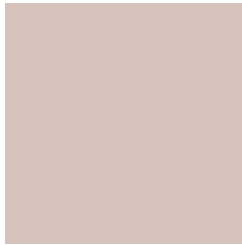
0, 135, 171



0, 34, 43

Previews

White Background



This preview shows how the RGB color 213, 194, 189 looks on a white background.

Color Contrast Check

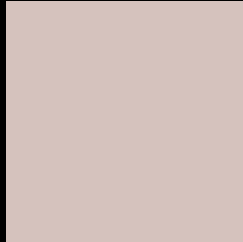
Large Text (above 18pt) WCAG AA × Fail

Any Text WCAG AA × Fail

Large Text (above 18pt) WCAG AAA × Fail

Any Text WCAG AAA × Fail

Black Background



This preview shows how the RGB color 213, 194, 189 looks on a black background.

Color Contrast Check

Large Text (above 18pt) WCAG AA ✓ Pass

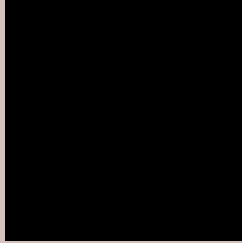
Any Text WCAG AA ✓ Pass

Large Text (above 18pt) WCAG AAA ✓ Pass

Any Text WCAG AAA ✓ Pass

If you want to check with other color combinations, try the [Color Contrast Checker](#).

RGB 213, 194, 189 Background



This preview shows how black text looks on a background with the RGB color 213, 194, 189.



This preview shows how white text looks on a background with the RGB color 213, 194, 189.

Color Blindness Simulation

Color vision deficiency is a very complex topic, and I could not describe the different causes any better than Wikipedia does, so if you want to learn more, you should check out their [article about color blindness](#).


Dichromacy



Original Color
213, 194, 189

Protanopia
203, 197, 191

Deuteranopia
220, 191, 190



Tritanopia
215, 191, 206

Trichromacy



Original Color

213, 194, 189

Protanomaly

207, 196, 190

Deuteranomaly

217, 192, 190

Tritanomaly

214, 192, 200

Monochromacy



Original Color

213, 194, 189

Achromatopsia

199, 199, 199

Achromatomaly

204, 197, 195

CSS Examples

Text

The CSS property to change the color of the text to RGB 213, 194, 189 is called "color". The color property can be set on classes, ids or directly on the HTML element.

This example shows how text in the color `rgb(213, 194, 189)` looks like.

```
.text, #text, p{  
    color:rgb(213, 194, 189)  
}
```

If you want to add a text shadow in that color use the text-shadow property, you can generate a text shadow directly with our [CSS Text Shadow Generator](#).

Here you see how black text with a 4 pixel rgb(213, 194, 189) colored shadow looks like.

```
.shadow{ text-shadow: 4px 4px 2px rgb(213, 194, 189) }
```

Border

The CSS property to change the border of an element to RGB 213, 194, 189 is called "border". The border property can be set on classes, ids or directly on the HTML element.

This example shows the color as border, it can be applied via the CSS property "border" or "border-color".

```
.border, #border, table{ border:4px solid rgb(213, 194, 189) }
```

If only the border color should be changed use the property `border-color`.

```
.border{ border-color:rgb(213, 194, 189) }
```

If you want to add a box shadow in that color use:

Here you see how a box with a 4 pixel `rgb(213, 194, 189)` colored shadow looks like.

```
.boxshadow{ -moz-box-shadow:4px 4px 4px  
4px rgb(213, 194, 189); -webkit-box-  
shadow:4px 4px 4px 4px rgb(213, 194, 189);  
box-shadow:4px 4px 4px 4px rgb(213, 194,  
189) }
```

Background

The CSS property to change the background color of an element to RGB 213, 194, 189 is called "background". The background property can be set on classes, ids or directly on the HTML element.

```
.background, #background, body{  
background: rgb(213, 194, 189) }
```

If only the background color should be changed can be used:

```
.background{ background-color: rgb(213,  
194, 189) }
```

This example shows the color as background, it is applied via the CSS property "background".

To optimize and compress your CSS code, you can use our [online CSS compressor and optimizer](#) based on csstidy. If you want to create a linear or radial gradient as background or border, check our [CSS Gradient Generator](#).

Hey! You found this booklet interesting? Support Converting Colors with the new Membership Option!

The pro membership hides all ads, plus gives you double the colors in the color bucket, and more awesome pro features!

[Learn more, Memberships starting at \\$2.50/m!](#)

**Follow me
on Twitter!**

@ConvertingColor