

Converting Colors

RGB(213, 59, 114)

Have a look what the booklet for
RGB(213, 59, 114) contains.

RGB(213, 59, 114)	3
<i>Conversions</i>	4
<i>Details</i>	6
<i>Harmonies</i>	11
<i>Previews</i>	23
<i>Color Blindness Simulation</i>	26
<i>CSS Examples</i>	29

Color

RGB(213, 59, 114)

Conversions

Conversions Part 1

Format	Color
Hex	D53B72
RGB	213, 59, 114
RGB Percent	84%, 23%, 45%
CMY	0.1647, 0.7686, 0.5529
CMYK	0.00, 0.72, 0.46, 0.16
HSL	339°, 65%, 53%
HSV	339°, 72%, 84%
XYZ	32.0418, 18.4890, 17.7995
YIQ	111.3160, 74.1290, 49.7530

Conversions

Conversions Part 2

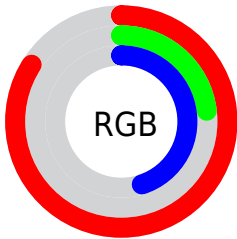
Format	Color
R_{YB}	213, 59, 114
Decimal	13974386
CIE _{Lab}	50.08, 63.14, 4.58
CIE _{LCh}	50, 63.308, 4.149
Yxy	18.4890, 0.4689, 0.2706
Android (android.graphics.Color)	4292164466 (0xFFD53B72)
YUV	111.3160, 1.3232, 89.1769
Hunter-Lab	42.9988, 57.7665, 5.5558

Details

The RGB color **213, 59, 114** is a dark color, and the websafe version is hex **CC3366**. The color can be described as dark muted rose. A complement of this color would be **59, 213, 158**, and the grayscale version is **111, 111, 111**.

A 20% lighter version of the original color is **255, 118, 166**, and **153, 0, 66** is the 20% darker color. If you saturate the color by 10%, you get **213, 38, 100**, and if you desaturate by 10%, it is **213, 80, 128**.

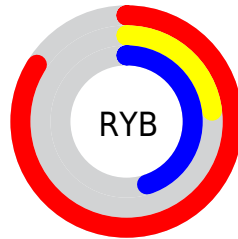
Distribution



Red (84%)

Green (23%)

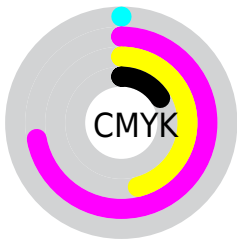
Blue (45%)



Red (84%)

Yellow (23%)

Blue (45%)

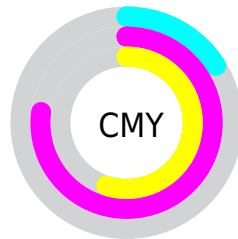


Cyan (0%)

Magenta (72%)

Yellow (46%)

Black (16%)



Cyan (16%)


Magenta (77%)


Yellow (55%)

Brightness & Saturation Gradients

These gradients show how the RGB color 213, 59, 114 changes by changing the brightness by 10 percent. The first figure shows a shift by +10% for each color and the second figure -10%.

Similar to the brightness gradients but the following saturation gradients show a change of the RGB color 213, 59, 114 by changing the saturation by 10% instead.

 213, 59, 114

 213, 59, 114

255, 255, 255

 183, 21, 90

 255, 118, 166

 153, 0, 66

 255, 146, 193

 123, 0, 45

 255, 175, 221

 94, 0, 25

 255, 204, 249

 68, 0, 3

 255, 233, 255

 34, 0, 1

 0, 0, 0

 213, 59, 114

 213, 59, 114

 213, 38, 100

 213, 80, 128

■ 213, 16, 87

■ 213, 102, 141

■ 213, 0, 76

■ 213, 123, 155

■ 213, 144, 169

■ 213, 166, 182

■ 213, 187, 196

■ 213, 208, 210

■ 213, 229, 224

■ 213, 251, 237

Harmonies

Analogous

The Analogous color harmony consists of three colors that are next to each other on the color wheel.



189, 74, 167



213, 59, 114



208, 73, 62

Triad

The Triadic color harmony groups three colors that are evenly spaced from another and form a triangle on the color wheel.



213, 59, 114



81, 133, 8



0, 137, 216

Complementary

The Complementary color scheme is a pair of colors which are on the opposite of each other on the color wheel.



213, 59, 114



59, 213, 158

Split Complementary

Split-complementary colors differ from the complementary color scheme. The scheme consists of three colors, the original color and two neighbors of the complement color.



0, 143, 179



213, 59, 114



0, 140, 69

Square

The Square scheme is like the rectangle color scheme, but the four colors are evenly spaced on the color wheel.



213, 59, 114



137, 119, 0



0, 143, 125



0, 123, 227

Rectangle

The Rectangle color scheme consists of four colors that form a rectangle on the color wheel.



213, 59, 114



191, 90, 28



0, 143, 125



0, 140, 206

Sweetspot

The Sweet Spot groups the original color and five complimentary colors.



213, 59, 114



255, 199, 219



157, 59, 213



128, 94, 106



0, 0, 0



128, 128, 128

Same Dimension

The Same Dimension uses a secret algorithm to generate beautiful new colors.



213, 59, 114



255, 33, 112



213, 80, 59



107, 96, 100



171, 0, 61



43, 0, 15

Inverse Universe

The Inverse Universe completely reimagines the original color for something new.



213, 59, 114



255, 33, 112



59, 192, 213



107, 96, 100



171, 0, 61



43, 0, 15

Previews

White Background



This preview shows how the RGB color 213, 59, 114 looks on a white background.

Color Contrast Check

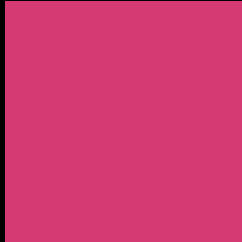
Large Text (above 18pt) WCAG AA ✓ Pass

Any Text WCAG AA ✗ Fail

Large Text (above 18pt) WCAG AAA ✗ Fail

Any Text WCAG AAA ✗ Fail

Black Background



This preview shows how the RGB color 213, 59, 114 looks on a black background.

Color Contrast Check

Large Text (above 18pt) WCAG AA ✓ Pass

Any Text WCAG AA ✓ Pass

Large Text (above 18pt) WCAG AAA ✓ Pass

Any Text WCAG AAA × Fail

If you want to check with other color combinations, try the [Color Contrast Checker](#).

RGB 213, 59, 114 Background



This preview shows how black text looks on a background with the RGB color 213, 59, 114.

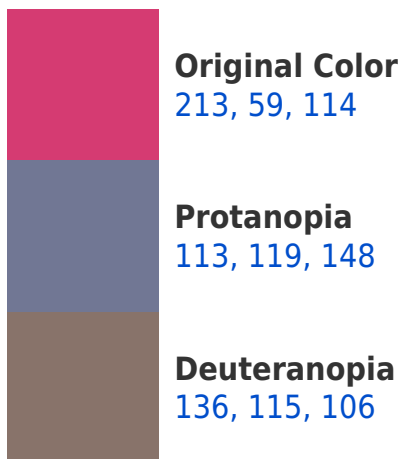


This preview shows how white text looks on a background with the RGB color 213, 59, 114.

Color Blindness Simulation

Color vision deficiency is a very complex topic, and I could not describe the different causes any better than Wikipedia does, so if you want to learn more, you should check out their [article about color blindness](#).

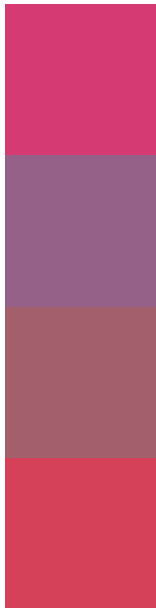
Dichromacy





Tritanopia
211, 69, 73

Trichromacy



Original Color

213, 59, 114

Protanomaly

149, 97, 136

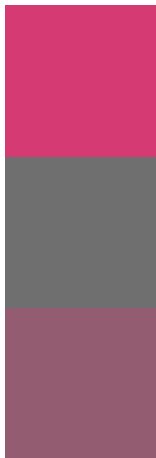
Deuteranomaly

164, 95, 109

Tritanomaly

212, 65, 88

Monochromacy



Original Color

213, 59, 114

Achromatopsia

111, 111, 111

Achromatomaly

148, 92, 112

CSS Examples

Text

The CSS property to change the color of the text to RGB 213, 59, 114 is called "color". The color property can be set on classes, ids or directly on the HTML element.

This example shows how text in the color `rgb(213, 59, 114)` looks like.

```
.text, #text, p{  
    color:rgb(213, 59, 114)  
}
```

If you want to add a text shadow in that color use the text-shadow property, you can generate a text shadow directly with our [CSS Text Shadow Generator](#).

Here you see how black text with a 4 pixel rgb(213, 59, 114) colored shadow looks like.

```
.shadow{ text-shadow: 4px 4px 2px rgb(213, 59, 114) }
```

Border

The CSS property to change the border of an element to RGB 213, 59, 114 is called "border". The border property can be set on classes, ids or directly on the HTML element.

This example shows the color as border, it can be applied via the CSS property "border" or "border-color".

```
.border, #border, table{ border:4px solid rgb(213, 59, 114) }
```

If only the border color should be changed use the property `border-color`.

```
.border{ border-color:rgb(213, 59, 114) }
```

If you want to add a box shadow in that color use:

Here you see how a box with a 4 pixel `rgb(213, 59, 114)` colored shadow looks like.

```
.boxshadow{ -moz-box-shadow:4px 4px 4px 4px rgb(213, 59, 114); -webkit-box-shadow:4px 4px 4px 4px rgb(213, 59, 114); box-shadow:4px 4px 4px 4px rgb(213, 59, 114) }
```

Background

The CSS property to change the background color of an element to RGB 213, 59, 114 is called "background". The background property can be set on classes, ids or directly on the HTML element.

```
.background, #background, body{  
background: rgb(213, 59, 114) }
```

If only the background color should be changed can be used:

```
.background{ background-color: rgb(213, 59,  
114) }
```

This example shows the color as background, it is applied via the CSS property "background".

To optimize and compress your CSS code, you can use our [online CSS compressor and optimizer](#) based on csstidy. If you want to create a linear or radial gradient as background or border, check our [CSS Gradient Generator](#).

Hey! You found this booklet interesting? Support Converting Colors with the new Membership Option!

The pro membership hides all ads, plus gives you double the colors in the color bucket, and more awesome pro features!

[Learn more, Memberships starting at \\$2.50/m!](#)

**Follow me
on Twitter!**

@ConvertingColor