

Converting Colors

RGB(214, 167, 156)

Have a look what the booklet for
RGB(214, 167, 156) contains.

RGB(214, 167, 156)	3
<i>Conversions</i>	4
<i>Details</i>	6
<i>Harmonies</i>	11
<i>Previews</i>	23
<i>Color Blindness Simulation</i>	26
<i>CSS Examples</i>	29

Color

RGB(214, 167, 156)

Conversions

Conversions Part 1

Format	Color
Hex	D6A79C
RGB	214, 167, 156
RGB Percent	84%, 65%, 61%
CMY	0.1608, 0.3451, 0.3882
CMYK	0.00, 0.22, 0.27, 0.16
HSL	11°, 41%, 73%
HSV	11°, 27%, 84%
XYZ	47.5510, 44.3339, 37.5036
YIQ	179.7990, 31.5430, 6.5430

Conversions

Conversions Part 2

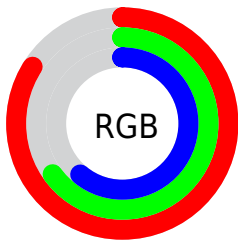
Format	Color
RYB	214, 170, 156
Decimal	14067612
CIELab	72.45, 15.67, 12.31
CIELCh	72, 19.926, 38.140
Yxy	44.3339, 0.3675, 0.3426
Android (android.graphics.Color)	4292257692 (0xFFD6A79C)
YUV	179.7990, -11.7329, 29.9943
Hunter-Lab	66.5837, 10.9551, 13.2132

Details

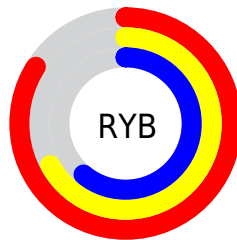
The RGB color **214, 167, 156** is a light color, and the websafe version is hex **CC9999**. A complement of this color would be **156, 203, 214**, and the grayscale version is **180, 180, 180**.

A 20% lighter version of the original color is **255, 222, 210**, and **158, 115, 105** is the 20% darker color. If you saturate the color by 10%, you get **214, 150, 135**, and if you desaturate by 10%, it is **214, 184, 177**.

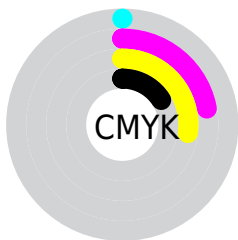
Distribution



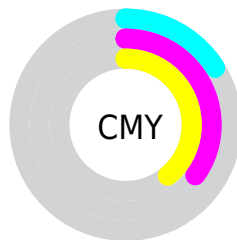
- Red (84%)
- Green (65%)
- Blue (61%)



- Red (84%)
- Yellow (67%)
- Blue (61%)



- Cyan (0%)
- Magenta (22%)
- Yellow (27%)
- Black (16%)




- Cyan (16%)
- Magenta (35%)
- Yellow (39%)

Brightness & Saturation Gradients


These gradients show how the RGB color 214, 167, 156 changes by changing the brightness by 10 percent. The first figure shows a shift by +10% for each color and the second figure -10%.

Similar to the brightness gradients but the following saturation gradients show a change of the RGB color 214, 167, 156 by changing the saturation by 10% instead.

 214, 167, 156

 214, 167, 156


255, 255, 255

 186, 141, 130


 255, 222, 210

 158, 115, 105

 255, 251, 239

 131, 90, 81


 105, 67, 58


 80, 44, 36

 56, 23, 15

 35, 0, 0

 0, 0, 0

 214, 167, 156

 214, 167, 156

■ 214, 150, 135

■ 214, 184, 177

■ 214, 132, 113

■ 214, 202, 199

■ 214, 115, 92

■ 214, 219, 220

■ 214, 98, 70

■ 214, 236, 242

■ 214, 80, 49

■ 214, 254, 255

■ 214, 63, 28

■ 214, 255, 255

■ 214, 46, 6

■ 214, 41, 0

Harmonies

Analogous

The Analogous color harmony consists of three colors that are next to each other on the color wheel.



215, 165, 173



214, 167, 156



204, 172, 144

Triad

The Triadic color harmony groups three colors that are evenly spaced from another and form a triangle on the color wheel.



214, 167, 156



146, 187, 164



163, 178, 213

Complementary

The Complementary color scheme is a pair of colors which are on the opposite of each other on the color wheel.



214, 167, 156



156, 203, 214

Split Complementary

Split-complementary colors differ from the complementary color scheme. The scheme consists of three colors, the original color and two neighbors of the complement color.



141, 183, 211



214, 167, 156



131, 188, 182

Square

The Square scheme is like the rectangle color scheme, but the four colors are evenly spaced on the color wheel.



214, 167, 156



166, 183, 149



129, 187, 199



187, 171, 206

Rectangle

The Rectangle color scheme consists of four colors that form a rectangle on the color wheel.



214, 167, 156



193, 176, 142



129, 187, 199



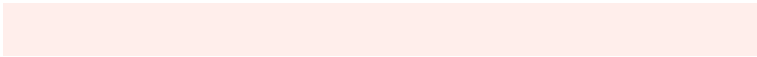
155, 180, 214

Sweetspot

The Sweet Spot groups the original color and five complimentary colors.



214, 167, 156



255, 238, 235



214, 156, 203



128, 117, 115



0, 0, 0



128, 128, 128

Same Dimension

The Same Dimension uses a secret algorithm to generate beautiful new colors.



214, 167, 156



255, 187, 171



214, 196, 156



107, 98, 96



171, 32, 0



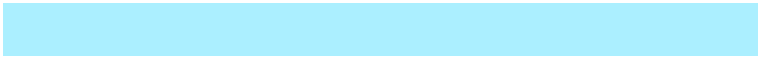
43, 8, 0

Inverse Universe

The Inverse Universe completely reimagines the original color for something new.



156, 203, 214



171, 239, 255



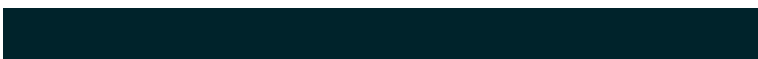
156, 174, 214



96, 105, 107



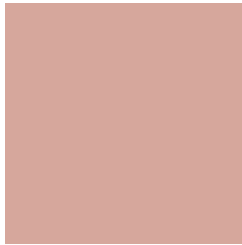
0, 138, 171



0, 35, 43

Previews

White Background



This preview shows how the RGB color 214, 167, 156 looks on a white background.

Color Contrast Check

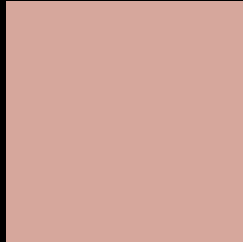
Large Text (above 18pt) WCAG AA × Fail

Any Text WCAG AA × Fail

Large Text (above 18pt) WCAG AAA × Fail

Any Text WCAG AAA × Fail

Black Background



This preview shows how the RGB color 214, 167, 156 looks on a black background.

Color Contrast Check

Large Text (above 18pt) WCAG AA ✓ Pass

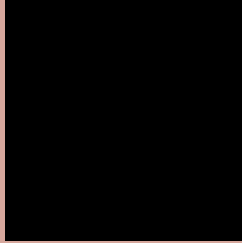
Any Text WCAG AA ✓ Pass

Large Text (above 18pt) WCAG AAA ✓ Pass

Any Text WCAG AAA ✓ Pass

If you want to check with other color combinations, try the [Color Contrast Checker](#).

RGB 214, 167, 156 Background



This preview shows how black text looks on a background with the RGB color 214, 167, 156.



This preview shows how white text looks on a background with the RGB color 214, 167, 156.

Color Blindness Simulation

Color vision deficiency is a very complex topic, and I could not describe the different causes any better than Wikipedia does, so if you want to learn more, you should check out their [article about color blindness](#).

Dichromacy



Original Color
214, 167, 156

Protanopia
185, 177, 161

Deuteranopia
203, 171, 155



Tritanopia
216, 164, 177

Trichromacy



Original Color
214, 167, 156

Protanomaly
196, 173, 159

Deuteranomaly
207, 170, 155

Tritanomaly
215, 165, 169

Monochromacy



Original Color
214, 167, 156

Achromatopsia
180, 180, 180

Achromatomaly
192, 175, 171

CSS Examples

Text

The CSS property to change the color of the text to RGB 214, 167, 156 is called "color". The color property can be set on classes, ids or directly on the HTML element.

This example shows how text in the color `rgb(214, 167, 156)` looks like.

```
.text, #text, p{  
    color:rgb(214, 167, 156)  
}
```

If you want to add a text shadow in that color use the text-shadow property, you can generate a text shadow directly with our [CSS Text Shadow Generator](#).

Here you see how black text with a 4 pixel rgb(214, 167, 156) colored shadow looks like.

```
.shadow{ text-shadow: 4px 4px 2px rgb(214, 167, 156) }
```

Border

The CSS property to change the border of an element to RGB 214, 167, 156 is called "border". The border property can be set on classes, ids or directly on the HTML element.

This example shows the color as border, it can be applied via the CSS property "border" or "border-color".

```
.border, #border, table{ border:4px solid rgb(214, 167, 156) }
```

If only the border color should be changed use the property `border-color`.

```
.border{ border-color:rgb(214, 167, 156) }
```

If you want to add a box shadow in that color use:

Here you see how a box with a 4 pixel `rgb(214, 167, 156)` colored shadow looks like.

```
.boxshadow{ -moz-box-shadow:4px 4px 4px  
4px rgb(214, 167, 156); -webkit-box-  
shadow:4px 4px 4px 4px rgb(214, 167, 156);  
box-shadow:4px 4px 4px 4px rgb(214, 167,  
156) }
```

Background

The CSS property to change the background color of an element to RGB 214, 167, 156 is called "background". The background property can be set on classes, ids or directly on the HTML element.

```
.background, #background, body{  
background: rgb(214, 167, 156) }
```

If only the background color should be changed can be used:

```
.background{ background-color: rgb(214,  
167, 156) }
```

This example shows the color as background, it is applied via the CSS property "background".

To optimize and compress your CSS code, you can use our [online CSS compressor and optimizer](#) based on csstidy. If you want to create a linear or radial gradient as background or border, check our [CSS Gradient Generator](#).

Hey! You found this booklet interesting? Support Converting Colors with the new Membership Option!

The pro membership hides all ads, plus gives you double the colors in the color bucket, and more awesome pro features!

[Learn more, Memberships starting at \\$2.50/m!](#)

**Follow me
on Twitter!**

@ConvertingColor