

Converting Colors

RGB(214, 178, 176)

Have a look what the booklet for
RGB(214, 178, 176) contains.

RGB(214, 178, 176)	3
<i>Conversions</i>	4
<i>Details</i>	6
<i>Harmonies</i>	11
<i>Previews</i>	23
<i>Color Blindness Simulation</i>	26
<i>CSS Examples</i>	29

Color

RGB(214, 178, 176)

Conversions

Conversions Part 1

Format	Color
Hex	D6B2B0
RGB	214, 178, 176
RGB Percent	84%, 70%, 69%
CMY	0.1608, 0.3020, 0.3098
CMYK	0.00, 0.17, 0.18, 0.16
HSL	3°, 32%, 76%
HSV	3°, 18%, 84%
XYZ	51.4884, 49.2715, 47.8709
YIQ	188.5360, 22.0980, 7.0100

Conversions

Conversions Part 2

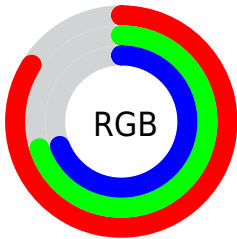
Format	Color
RYB	214, 178, 176
Decimal	14070448
CIELab	75.62, 12.68, 5.89
CIELCh	76, 13.980, 24.905
Yxy	49.2715, 0.3464, 0.3315
Android (android.graphics.Color)	4292260528 (0xFFD6B2B0)
YUV	188.5360, -6.1802, 22.3319
Hunter-Lab	70.1937, 8.0943, 8.7008

Details

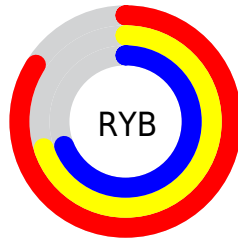
The RGB color **214, 178, 176** is a light color, and the websafe version is hex **CC9999**. A complement of this color would be **176, 212, 214**, and the grayscale version is **189, 189, 189**.

A 20% lighter version of the original color is **255, 234, 232**, and **159, 125, 124** is the 20% darker color. If you saturate the color by 10%, you get **214, 158, 155**, and if you desaturate by 10%, it is **214, 198, 197**.

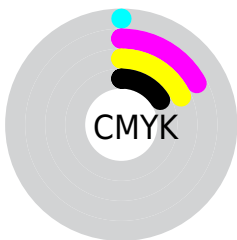
Distribution



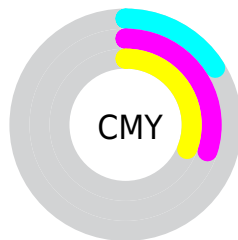
- Red (84%)
- Green (70%)
- Blue (69%)



- Red (84%)
- Yellow (70%)
- Blue (69%)



- Cyan (0%)
- Magenta (17%)
- Yellow (18%)
- Black (16%)





- Cyan (16%)
- Magenta (30%)
- Yellow (31%)

Brightness & Saturation Gradients

These gradients show how the RGB color 214, 178, 176 changes by changing the brightness by 10 percent. The first figure shows a shift by +10% for each color and the second figure -10%.

Similar to the brightness gradients but the following saturation gradients show a change of the RGB color 214, 178, 176 by changing the saturation by 10% instead.

 214, 178, 176


 214, 178, 176

255, 255, 255

 186, 151, 149

 255, 234, 232

 159, 125, 124

 132, 100, 99

 107, 76, 75


 82, 53, 52


 58, 32, 31

 37, 10, 7


 0, 0, 0

 214, 178, 176

 214, 178, 176

 214, 158, 155


 214, 198, 197

 214, 137, 133


 214, 219, 219


 214, 117, 112

 214, 239, 240

 214, 97, 90

 214, 255, 255

 214, 77, 69

 214, 56, 48

 214, 36, 26

 214, 16, 5

 214, 11, 0

Harmonies

Analogous

The Analogous color harmony consists of three colors that are next to each other on the color wheel.



211, 178, 189



214, 178, 176



210, 181, 166

Triad

The Triadic color harmony groups three colors that are evenly spaced from another and form a triangle on the color wheel.



214, 178, 176



170, 192, 171



170, 188, 212

Complementary

The Complementary color scheme is a pair of colors which are on the opposite of each other on the color wheel.



214, 178, 176



176, 212, 214

Split Complementary

Split-complementary colors differ from the complementary color scheme. The scheme consists of three colors, the original color and two neighbors of the complement color.



157, 192, 207



214, 178, 176



158, 194, 184

Square

The Square scheme is like the rectangle color scheme, but the four colors are evenly spaced on the color wheel.



214, 178, 176



185, 189, 163



153, 194, 197



186, 184, 210

Rectangle

The Rectangle color scheme consists of four colors that form a rectangle on the color wheel.



214, 178, 176



203, 183, 162



153, 194, 197



165, 189, 211

Sweetspot

The Sweet Spot groups the original color and five complimentary colors.



214, 178, 176



255, 243, 242



214, 176, 212



128, 120, 120



0, 0, 0



128, 128, 128

Same Dimension

The Same Dimension uses a secret algorithm to generate beautiful new colors.



214, 178, 176



255, 204, 201



214, 197, 176



107, 97, 96



171, 9, 0



43, 2, 0

Inverse Universe

The Inverse Universe completely reimagines the original color for something new.



176, 212, 214



201, 252, 255



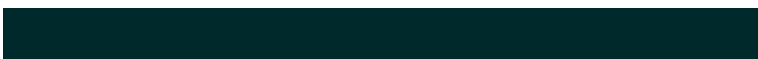
176, 193, 214



96, 107, 107



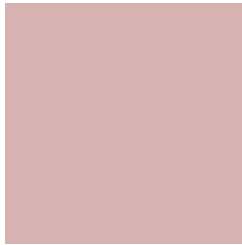
0, 162, 171



0, 41, 43

Previews

White Background



This preview shows how the RGB color 214, 178, 176 looks on a white background.

Color Contrast Check

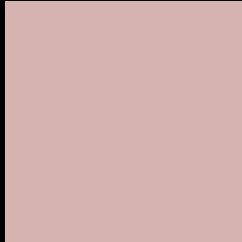
Large Text (above 18pt) WCAG AA × Fail

Any Text WCAG AA × Fail

Large Text (above 18pt) WCAG AAA × Fail

Any Text WCAG AAA × Fail

Black Background



This preview shows how the RGB color 214, 178, 176 looks on a black background.

Color Contrast Check

Large Text (above 18pt) WCAG AA ✓ Pass

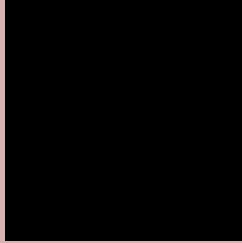
Any Text WCAG AA ✓ Pass

Large Text (above 18pt) WCAG AAA ✓ Pass

Any Text WCAG AAA ✓ Pass

If you want to check with other color combinations, try the [Color Contrast Checker](#).

RGB 214, 178, 176 Background



This preview shows how black text looks on a background with the RGB color 214, 178, 176.






This preview shows how white text looks on a background with the RGB color 214, 178, 176.

Color Blindness Simulation

Color vision deficiency is a very complex topic, and I could not describe the different causes any better than Wikipedia does, so if you want to learn more, you should check out their [article about color blindness](#).

Dichromacy

	Original Color 214, 178, 176
	Protanopia 191, 186, 180
	Deuteranopia 209, 180, 176



Tritanopia
216, 176, 190

Trichromacy



Original Color

214, 178, 176

Protanomaly

199, 183, 179

Deuteranomaly

211, 179, 176

Tritanomaly

215, 177, 185

Monochromacy



Original Color

214, 178, 176

Achromatopsia

189, 189, 189

Achromatomaly

198, 185, 184

CSS Examples

Text

The CSS property to change the color of the text to RGB 214, 178, 176 is called "color". The color property can be set on classes, ids or directly on the HTML element.

This example shows how text in the color `rgb(214, 178, 176)` looks like.

```
.text, #text, p{  
    color:rgb(214, 178, 176)  
}
```

If you want to add a text shadow in that color use the text-shadow property, you can generate a text shadow directly with our [CSS Text Shadow Generator](#).

Here you see how black text with a 4 pixel rgb(214, 178, 176) colored shadow looks like.

```
.shadow{ text-shadow: 4px 4px 2px rgb(214, 178, 176) }
```

Border

The CSS property to change the border of an element to RGB 214, 178, 176 is called "border". The border property can be set on classes, ids or directly on the HTML element.

This example shows the color as border, it can be applied via the CSS property "border" or "border-color".

```
.border, #border, table{ border:4px solid rgb(214, 178, 176) }
```

If only the border color should be changed use the property `border-color`.

```
.border{ border-color:rgb(214, 178, 176) }
```

If you want to add a box shadow in that color use:

Here you see how a box with a 4 pixel `rgb(214, 178, 176)` colored shadow looks like.

```
.boxshadow{ -moz-box-shadow:4px 4px 4px  
4px rgb(214, 178, 176); -webkit-box-  
shadow:4px 4px 4px 4px rgb(214, 178, 176);  
box-shadow:4px 4px 4px 4px rgb(214, 178,  
176) }
```

Background

The CSS property to change the background color of an element to RGB 214, 178, 176 is called "background". The background property can be set on classes, ids or directly on the HTML element.

```
.background, #background, body{  
background: rgb(214, 178, 176) }
```

If only the background color should be changed can be used:

```
.background{ background-color: rgb(214,  
178, 176) }
```

This example shows the color as background, it is applied via the CSS property "background".

To optimize and compress your CSS code, you can use our [online CSS compressor and optimizer](#) based on csstidy. If you want to create a linear or radial gradient as background or border, check our [CSS Gradient Generator](#).

Hey! You found this booklet interesting? Support Converting Colors with the new Membership Option!

The pro membership hides all ads, plus gives you double the colors in the color bucket, and more awesome pro features!

[Learn more, Memberships starting at \\$2.50/m!](#)

**Follow me
on Twitter!**

@ConvertingColor