

Converting Colors

RGB(214, 178, 182)

Have a look what the booklet for
RGB(214, 178, 182) contains.

RGB(214, 178, 182)	3
<i>Conversions</i>	4
<i>Details</i>	6
<i>Harmonies</i>	11
<i>Previews</i>	23
<i>Color Blindness Simulation</i>	26
<i>CSS Examples</i>	29

Color

RGB(214, 178, 182)

Conversions

Conversions Part 1

Format	Color
Hex	D6B2B6
RGB	214, 178, 182
RGB Percent	84%, 70%, 71%
CMY	0.1608, 0.3020, 0.2863
CMYK	0.00, 0.17, 0.15, 0.16
HSL	353°, 31%, 77%
HSV	353°, 17%, 84%
XYZ	52.0954, 49.5143, 51.0675
YIQ	189.2200, 20.1720, 8.8760

Conversions

Conversions Part 2

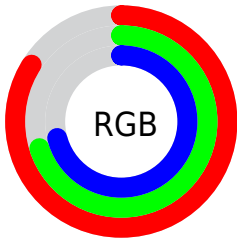
Format	Color
R _Y B	214, 178, 182
Decimal	14070454
CIE Lab	75.77, 13.63, 2.83
CIE LCh	76, 13.919, 11.747
Yxy	49.5143, 0.3412, 0.3243
Android (android.graphics.Color)	4292260534 (0xFFD6B2B6)
YUV	189.2200, -3.5595, 21.7321
Hunter-Lab	70.3664, 9.0104, 6.2276

Details

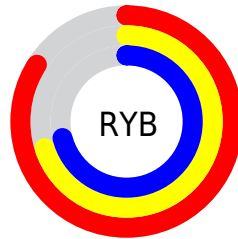
The RGB color **214, 178, 182** is a light color, and the websafe version is hex **CC9999**. A complement of this color would be **178, 214, 210**, and the grayscale version is **189, 189, 189**.

A 20% lighter version of the original color is **255, 234, 238**, and **159, 125, 129** is the 20% darker color. If you saturate the color by 10%, you get **214, 157, 163**, and if you desaturate by 10%, it is **214, 199, 201**.

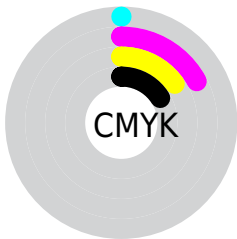
Distribution



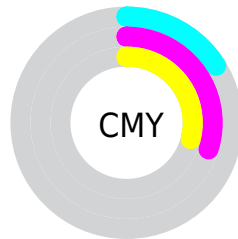
- Red (84%)
- Green (70%)
- Blue (71%)



- Red (84%)
- Yellow (70%)
- Blue (71%)



- Cyan (0%)
- Magenta (17%)
- Yellow (15%)
- Black (16%)





- Cyan (16%)
- Magenta (30%)
- Yellow (29%)

Brightness & Saturation Gradients

These gradients show how the RGB color 214, 178, 182 changes by changing the brightness by 10 percent. The first figure shows a shift by +10% for each color and the second figure -10%.

Similar to the brightness gradients but the following saturation gradients show a change of the RGB color 214, 178, 182 by changing the saturation by 10% instead.

 214, 178, 182

 214, 178, 182

255, 255, 255

 186, 151, 155

 255, 234, 238

 159, 125, 129

 132, 100, 104

 107, 76, 80

 82, 53, 57


 59, 32, 36

 37, 10, 14


 0, 0, 0

 214, 178, 182


 214, 178, 182

 214, 157, 163

 214, 199, 201

 214, 135, 144

 214, 221, 220

 214, 114, 125


 214, 242, 239

 214, 92, 106

 214, 255, 255

 214, 71, 87

 214, 50, 68

 214, 28, 49

 214, 7, 30

 214, 0, 24

Harmonies

Analogous

The Analogous color harmony consists of three colors that are next to each other on the color wheel.



208, 179, 195



214, 178, 182



213, 180, 170

Triad

The Triadic color harmony groups three colors that are evenly spaced from another and form a triangle on the color wheel.



214, 178, 182



177, 191, 167



164, 190, 211

Complementary

The Complementary color scheme is a pair of colors which are on the opposite of each other on the color wheel.



214, 178, 182



178, 214, 210

Split Complementary

Split-complementary colors differ from the complementary color scheme. The scheme consists of three colors, the original color and two neighbors of the complement color.



155, 193, 203



214, 178, 182



164, 194, 178

Square

The Square scheme is like the rectangle color scheme, but the four colors are evenly spaced on the color wheel.



214, 178, 182



192, 187, 162



155, 194, 191



179, 186, 212

Rectangle

The Rectangle color scheme consists of four colors that form a rectangle on the color wheel.



214, 178, 182



208, 182, 165



155, 194, 191



160, 191, 209

Sweetspot

The Sweet Spot groups the original color and five complimentary colors.



214, 178, 182



255, 242, 244



210, 178, 214



128, 120, 121



0, 0, 0



128, 128, 128

Same Dimension

The Same Dimension uses a secret algorithm to generate beautiful new colors.



214, 178, 182



255, 204, 210



214, 192, 178



107, 96, 98



171, 0, 19



43, 0, 5

Inverse Universe

The Inverse Universe completely reimagines the original color for something new.



214, 178, 182



255, 204, 210



178, 200, 214



107, 96, 98



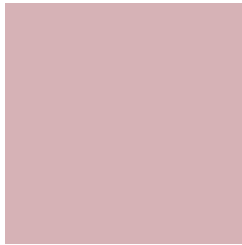
171, 0, 19



43, 0, 5

Previews

White Background



This preview shows how the RGB color 214, 178, 182 looks on a white background.

Color Contrast Check

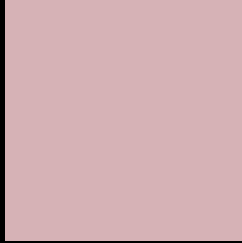
Large Text (above 18pt) WCAG AA × Fail

Any Text WCAG AA × Fail

Large Text (above 18pt) WCAG AAA × Fail

Any Text WCAG AAA × Fail

Black Background



This preview shows how the RGB color 214, 178, 182 looks on a black background.

Color Contrast Check

Large Text (above 18pt) WCAG AA ✓ Pass

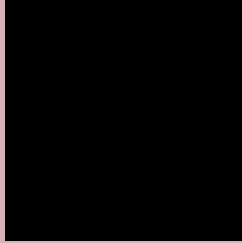
Any Text WCAG AA ✓ Pass

Large Text (above 18pt) WCAG AAA ✓ Pass

Any Text WCAG AAA ✓ Pass

If you want to check with other color combinations, try the [Color Contrast Checker](#).

RGB 214, 178, 182 Background



This preview shows how black text looks on a background with the RGB color 214, 178, 182.



This preview shows how white text looks on a background with the RGB color 214, 178, 182.

Color Blindness Simulation

Color vision deficiency is a very complex topic, and I could not describe the different causes any better than Wikipedia does, so if you want to learn more, you should check out their [article about color blindness](#).

Dichromacy



Original Color
214, 178, 182

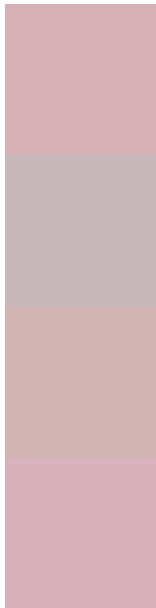
Protanopia
190, 186, 187

Deuteranopia
207, 181, 181



Tritanopia
215, 177, 190

Trichromacy



Original Color

214, 178, 182

Protanomaly

199, 183, 185

Deuteranomaly

210, 180, 181

Tritanomaly

215, 177, 187

Monochromacy



Original Color

214, 178, 182

Achromatopsia

189, 189, 189

Achromatomaly

198, 185, 186

CSS Examples

Text

The CSS property to change the color of the text to RGB 214, 178, 182 is called "color". The color property can be set on classes, ids or directly on the HTML element.

This example shows how text in the color rgb(214, 178, 182) looks like.

```
.text, #text, p{  
    color:rgb(214, 178, 182)  
}
```

If you want to add a text shadow in that color use the text-shadow property, you can generate a text shadow directly with our [CSS Text Shadow Generator](#).

Here you see how black text with a 4 pixel rgb(214, 178, 182) colored shadow looks like.

```
.shadow{ text-shadow: 4px 4px 2px rgb(214, 178, 182) }
```

Border

The CSS property to change the border of an element to RGB 214, 178, 182 is called "border". The border property can be set on classes, ids or directly on the HTML element.

This example shows the color as border, it can be applied via the CSS property "border" or "border-color".

```
.border, #border, table{ border:4px solid rgb(214, 178, 182) }
```

If only the border color should be changed use the property `border-color`.

```
.border{ border-color:rgb(214, 178, 182) }
```

If you want to add a box shadow in that color use:

Here you see how a box with a 4 pixel `rgb(214, 178, 182)` colored shadow looks like.

```
.boxshadow{ -moz-box-shadow:4px 4px 4px  
4px rgb(214, 178, 182); -webkit-box-  
shadow:4px 4px 4px 4px rgb(214, 178, 182);  
box-shadow:4px 4px 4px 4px rgb(214, 178,  
182) }
```

Background

The CSS property to change the background color of an element to RGB 214, 178, 182 is called "background". The background property can be set on classes, ids or directly on the HTML element.

```
.background, #background, body{  
background: rgb(214, 178, 182) }
```

If only the background color should be changed can be used:

```
.background{ background-color: rgb(214,  
178, 182) }
```

This example shows the color as background, it is applied via the CSS property "background".

To optimize and compress your CSS code, you can use our [online CSS compressor and optimizer](#) based on csstidy. If you want to create a linear or radial gradient as background or border, check our [CSS Gradient Generator](#).

Hey! You found this booklet interesting? Support Converting Colors with the new Membership Option!

The pro membership hides all ads, plus gives you double the colors in the color bucket, and more awesome pro features!

[Learn more, Memberships starting at \\$2.50/m!](#)

**Follow me
on Twitter!**

@ConvertingColor