

Converting Colors

RGB(214, 179, 188)

Have a look what the booklet for
RGB(214, 179, 188) contains.

RGB(214, 179, 188)	3
<i>Conversions</i>	4
<i>Details</i>	6
<i>Harmonies</i>	11
<i>Previews</i>	23
<i>Color Blindness Simulation</i>	26
<i>CSS Examples</i>	29

Color

RGB(214, 179, 188)

Conversions

Conversions Part 1

Format	Color
Hex	D6B3BC
RGB	214, 179, 188
RGB Percent	84%, 70%, 74%
CMY	0.1608, 0.2980, 0.2627
CMYK	0.00, 0.16, 0.12, 0.16
HSL	345°, 30%, 77%
HSV	345°, 16%, 84%
XYZ	52.9288, 50.1672, 54.4705
YIQ	190.4910, 17.9710, 10.2190

Conversions

Conversions Part 2

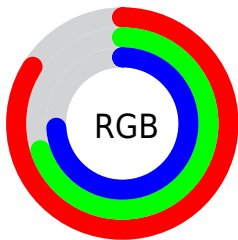
Format	Color
R _Y B	214, 179, 188
Decimal	14070716
CIE Lab	76.17, 14.07, 0.15
CIE LCh	76, 14.068, 0.605
Yxy	50.1672, 0.3359, 0.3184
Android (android.graphics.Color)	4292260796 (0xFFD6B3BC)
YUV	190.4910, -1.2281, 20.6174
Hunter-Lab	70.8288, 9.4386, 3.9835

Details

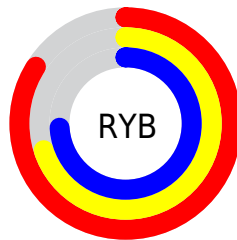
The RGB color **214, 179, 188** is a light color, and the websafe version is hex **CC9999**. A complement of this color would be **179, 214, 205**, and the grayscale version is **190, 190, 190**.

A 20% lighter version of the original color is **255, 235, 244**, and **159, 126, 135** is the 20% darker color. If you saturate the color by 10%, you get **214, 158, 172**, and if you desaturate by 10%, it is **214, 200, 204**.

Distribution



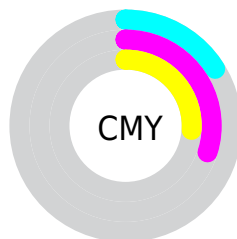
- Red (84%)
- Green (70%)
- Blue (74%)



- Red (84%)
- Yellow (70%)
- Blue (74%)



- Cyan (0%)
- Magenta (16%)
- Yellow (12%)
- Black (16%)




- Cyan (16%)
- Magenta (30%)
- Yellow (26%)

Brightness & Saturation Gradients


These gradients show how the RGB color 214, 179, 188 changes by changing the brightness by 10 percent. The first figure shows a shift by +10% for each color and the second figure -10%.

Similar to the brightness gradients but the following saturation gradients show a change of the RGB color 214, 179, 188 by changing the saturation by 10% instead.

 214, 179, 188

255, 255, 255

 255, 235, 244

 214, 179, 188

 186, 152, 161

 159, 126, 135

 133, 101, 110

 107, 77, 85

 82, 54, 62

 59, 32, 40

 37, 11, 20

 0, 0, 0

 214, 179, 188

 214, 179, 188

■ 214, 158, 172

■ 214, 200, 204

■ 214, 136, 156

■ 214, 222, 220

■ 214, 115, 140

■ 214, 243, 236

■ 214, 93, 124

■ 214, 255, 252

■ 214, 72, 109

■ 214, 255, 255

■ 214, 51, 93

■ 214, 29, 77

■ 214, 8, 61

■ 214, 0, 55

Harmonies

Analogous

The Analogous color harmony consists of three colors that are next to each other on the color wheel.



205, 181, 201



214, 179, 188



215, 180, 175

Triad

The Triadic color harmony groups three colors that are evenly spaced from another and form a triangle on the color wheel.



214, 179, 188



184, 191, 165



161, 193, 210

Complementary

The Complementary color scheme is a pair of colors which are on the opposite of each other on the color wheel.



214, 179, 188



179, 214, 205

Split Complementary

Split-complementary colors differ from the complementary color scheme. The scheme consists of three colors, the original color and two neighbors of the complement color.



155, 195, 201



214, 179, 188



169, 194, 175

Square

The Square scheme is like the rectangle color scheme, but the four colors are evenly spaced on the color wheel.



214, 179, 188



198, 187, 162



158, 196, 188



174, 189, 214

Rectangle

The Rectangle color scheme consists of four colors that form a rectangle on the color wheel.



214, 179, 188



212, 182, 168



158, 196, 188



158, 194, 207

Sweetspot

The Sweet Spot groups the original color and five complimentary colors.



214, 179, 188



255, 242, 246



205, 179, 214



128, 120, 122



0, 0, 0



128, 128, 128

Same Dimension

The Same Dimension uses a secret algorithm to generate beautiful new colors.



214, 179, 188



255, 204, 217



214, 187, 179



107, 96, 99



171, 0, 44



43, 0, 11

Inverse Universe

The Inverse Universe completely reimagines the original color for something new.



214, 179, 188



255, 204, 217



179, 206, 214



107, 96, 99



171, 0, 44



43, 0, 11

Previews

White Background



This preview shows how the RGB color 214, 179, 188 looks on a white background.

Color Contrast Check

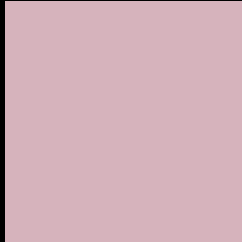
Large Text (above 18pt) WCAG AA × Fail

Any Text WCAG AA × Fail

Large Text (above 18pt) WCAG AAA × Fail

Any Text WCAG AAA × Fail

Black Background



This preview shows how the RGB color 214, 179, 188 looks on a black background.

Color Contrast Check

Large Text (above 18pt) WCAG AA ✓ Pass

Any Text WCAG AA ✓ Pass

Large Text (above 18pt) WCAG AAA ✓ Pass

Any Text WCAG AAA ✓ Pass

If you want to check with other color combinations, try the [Color Contrast Checker](#).

RGB 214, 179, 188 Background



This preview shows how black text looks on a background with the RGB color 214, 179, 188.



This preview shows how white text looks on a background with the RGB color 214, 179, 188.

Color Blindness Simulation

Color vision deficiency is a very complex topic, and I could not describe the different causes any better than Wikipedia does, so if you want to learn more, you should check out their [article about color blindness](#).


Dichromacy



Original Color
214, 179, 188

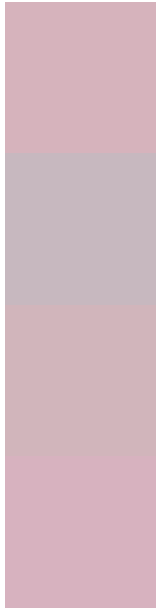
Protanopia
190, 187, 193

Deuteranopia
206, 182, 187



Tritanopia
215, 178, 192

Trichromacy



Original Color

214, 179, 188

Protanomaly

199, 184, 191

Deuteranomaly

209, 181, 187

Tritanomaly

215, 178, 191

Monochromacy



Original Color

214, 179, 188

Achromatopsia

190, 190, 190

Achromatomaly

199, 186, 189

CSS Examples

Text

The CSS property to change the color of the text to RGB 214, 179, 188 is called "color". The color property can be set on classes, ids or directly on the HTML element.

This example shows how text in the color rgb(214, 179, 188) looks like.

```
.text, #text, p{  
    color:rgb(214, 179, 188)  
}
```

If you want to add a text shadow in that color use the text-shadow property, you can generate a text shadow directly with our [CSS Text Shadow Generator](#).

Here you see how black text with a 4 pixel rgb(214, 179, 188) colored shadow looks like.

```
.shadow{ text-shadow: 4px 4px 2px rgb(214, 179, 188) }
```

Border

The CSS property to change the border of an element to RGB 214, 179, 188 is called "border". The border property can be set on classes, ids or directly on the HTML element.

This example shows the color as border, it can be applied via the CSS property "border" or "border-color".

```
.border, #border, table{ border:4px solid rgb(214, 179, 188) }
```

If only the border color should be changed use the property `border-color`.

```
.border{ border-color:rgb(214, 179, 188) }
```

If you want to add a box shadow in that color use:

Here you see how a box with a 4 pixel `rgb(214, 179, 188)` colored shadow looks like.

```
.boxshadow{ -moz-box-shadow:4px 4px 4px  
4px rgb(214, 179, 188); -webkit-box-  
shadow:4px 4px 4px 4px rgb(214, 179, 188);  
box-shadow:4px 4px 4px 4px rgb(214, 179,  
188) }
```

Background

The CSS property to change the background color of an element to RGB 214, 179, 188 is called "background". The background property can be set on classes, ids or directly on the HTML element.

```
.background, #background, body{  
background: rgb(214, 179, 188) }
```

If only the background color should be changed can be used:

```
.background{ background-color: rgb(214,  
179, 188) }
```

This example shows the color as background, it is applied via the CSS property "background".

To optimize and compress your CSS code, you can use our [online CSS compressor and optimizer](#) based on csstidy. If you want to create a linear or radial gradient as background or border, check our [CSS Gradient Generator](#).

Hey! You found this booklet interesting? Support Converting Colors with the new Membership Option!

The pro membership hides all ads, plus gives you double the colors in the color bucket, and more awesome pro features!

[Learn more, Memberships starting at \\$2.50/m!](#)

**Follow me
on Twitter!**

@ConvertingColor