

Converting Colors

RGB(215, 156, 149)

Have a look what the booklet for
RGB(215, 156, 149) contains.

RGB(215, 156, 149)	3
<i>Conversions</i>	4
<i>Details</i>	6
<i>Harmonies</i>	11
<i>Previews</i>	23
<i>Color Blindness Simulation</i>	26
<i>CSS Examples</i>	29

Color

RGB(215, 156, 149)

Conversions

Conversions Part 1

Format	Color
Hex	D79C95
RGB	215, 156, 149
RGB Percent	84%, 61%, 58%
CMY	0.1569, 0.3882, 0.4157
CMYK	0.00, 0.27, 0.31, 0.16
HSL	6°, 45%, 71%
HSV	6°, 31%, 84%
XYZ	45.3376, 40.3939, 33.8410
YIQ	172.8430, 37.4110, 10.3310

Conversions

Conversions Part 2

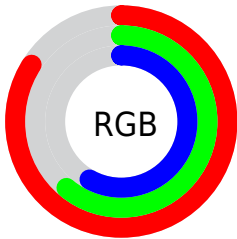
Format	Color
R _Y B	215, 157, 149
Decimal	14130325
CIE Lab	69.75, 21.06, 12.37
CIE LCh	70, 24.425, 30.425
Yxy	40.3939, 0.3792, 0.3378
Android (android.graphics.Color)	4292320405 (0xFFD79C95)
YUV	172.8430, -11.7546, 36.9717
Hunter-Lab	63.5562, 16.1090, 12.9199

Details

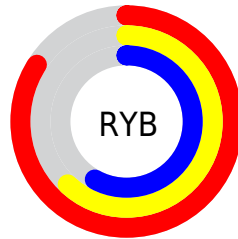
The RGB color **215, 156, 149** is a light color, and the websafe version is hex **CC9999**. A complement of this color would be **149, 208, 215**, and the grayscale version is **173, 173, 173**.

A 20% lighter version of the original color is **255, 211, 203**, and **159, 104, 98** is the 20% darker color. If you saturate the color by 10%, you get **215, 137, 127**, and if you desaturate by 10%, it is **215, 175, 171**.

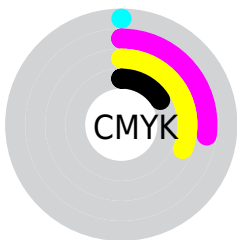
Distribution



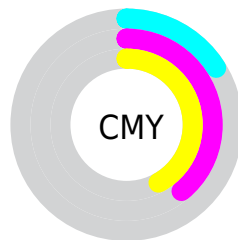
- Red (84%)
- Green (61%)
- Blue (58%)



- Red (84%)
- Yellow (62%)
- Blue (58%)



- Cyan (0%)
- Magenta (27%)
- Yellow (31%)
- Black (16%)



- Cyan (16%)
- Magenta (39%)
- Yellow (42%)

Brightness & Saturation Gradients


These gradients show how the RGB color 215, 156, 149 changes by changing the brightness by 10 percent. The first figure shows a shift by +10% for each color and the second figure -10%.

Similar to the brightness gradients but the following saturation gradients show a change of the RGB color 215, 156, 149 by changing the saturation by 10% instead.

 215, 156, 149

 215, 156, 149

255, 255, 255

 187, 130, 123

 255, 211, 203

 159, 104, 98

 255, 239, 231

 132, 80, 75

 105, 56, 52

 80, 34, 31

 55, 12, 7

 34, 0, 1

 0, 0, 0

 215, 156, 149

 215, 156, 149

■ 215, 137, 127

■ 215, 175, 171

■ 215, 118, 106

■ 215, 194, 192

■ 215, 98, 85

■ 215, 214, 214

■ 215, 79, 63

■ 215, 233, 235

■ 215, 60, 42

■ 215, 252, 255

■ 215, 41, 20

■ 215, 255, 255

■ 215, 23, 0

Harmonies

Analogous

The Analogous color harmony consists of three colors that are next to each other on the color wheel.



213, 154, 171



215, 156, 149



205, 162, 133

Triad

The Triadic color harmony groups three colors that are evenly spaced from another and form a triangle on the color wheel.



215, 156, 149



137, 181, 148



144, 172, 214

Complementary

The Complementary color scheme is a pair of colors which are on the opposite of each other on the color wheel.



215, 156, 149



149, 208, 215

Split Complementary

Split-complementary colors differ from the complementary color scheme. The scheme consists of three colors, the original color and two neighbors of the complement color.



117, 179, 208



215, 156, 149



115, 183, 170

Square

The Square scheme is like the rectangle color scheme, but the four colors are evenly spaced on the color wheel.



215, 156, 149



163, 176, 132



106, 182, 192



174, 165, 209

Rectangle

The Rectangle color scheme consists of four colors that form a rectangle on the color wheel.



215, 156, 149



193, 167, 127



106, 182, 192



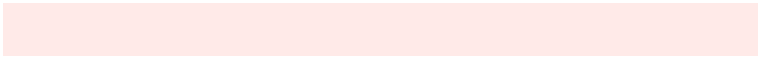
134, 175, 214

Sweetspot

The Sweet Spot groups the original color and five complimentary colors.



215, 156, 149



255, 234, 232



215, 149, 208



128, 115, 113



0, 0, 0



128, 128, 128

Same Dimension

The Same Dimension uses a secret algorithm to generate beautiful new colors.



215, 156, 149



255, 171, 161



215, 189, 149



107, 98, 96



171, 18, 0



43, 5, 0

Inverse Universe

The Inverse Universe completely reimagines the original color for something new.



149, 208, 215



161, 245, 255



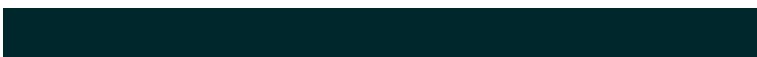
149, 175, 215



96, 106, 107



0, 153, 171



0, 39, 43

Previews

White Background



This preview shows how the RGB color 215, 156, 149 looks on a white background.

Color Contrast Check

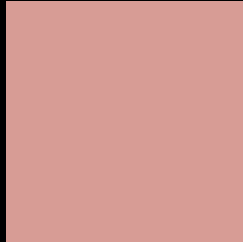
Large Text (above 18pt) WCAG AA × Fail

Any Text WCAG AA × Fail

Large Text (above 18pt) WCAG AAA × Fail

Any Text WCAG AAA × Fail

Black Background



This preview shows how the RGB color 215, 156, 149 looks on a black background.

Color Contrast Check

Large Text (above 18pt) WCAG AA ✓ Pass

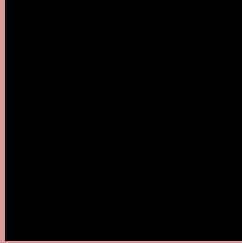
Any Text WCAG AA ✓ Pass

Large Text (above 18pt) WCAG AAA ✓ Pass

Any Text WCAG AAA ✓ Pass

If you want to check with other color combinations, try the [Color Contrast Checker](#).

RGB 215, 156, 149 Background



This preview shows how black text looks on a background with the RGB color 215, 156, 149.



This preview shows how white text looks on a background with the RGB color 215, 156, 149.

Color Blindness Simulation

Color vision deficiency is a very complex topic, and I could not describe the different causes any better than Wikipedia does, so if you want to learn more, you should check out their [article about color blindness](#).

Dichromacy



Original Color
215, 156, 149

Protanopia
177, 170, 156

Deuteranopia
196, 164, 147



Tritanopia
217, 154, 165

Trichromacy



Original Color
215, 156, 149

Protanomaly
191, 165, 153

Deuteranomaly
203, 161, 148

Tritanomaly
216, 155, 159

Monochromacy



Original Color
215, 156, 149

Achromatopsia
173, 173, 173

Achromatomaly
188, 167, 164

CSS Examples

Text

The CSS property to change the color of the text to RGB 215, 156, 149 is called "color". The color property can be set on classes, ids or directly on the HTML element.

This example shows how text in the color rgb(215, 156, 149) looks like.

```
.text, #text, p{  
    color:rgb(215, 156, 149)  
}
```

If you want to add a text shadow in that color use the text-shadow property, you can generate a text shadow directly with our [CSS Text Shadow Generator](#).

Here you see how black text with a 4 pixel rgb(215, 156, 149) colored shadow looks like.

```
.shadow{ text-shadow: 4px 4px 2px rgb(215, 156, 149) }
```

Border

The CSS property to change the border of an element to RGB 215, 156, 149 is called "border". The border property can be set on classes, ids or directly on the HTML element.

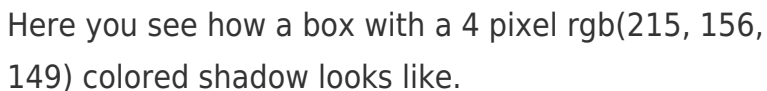
This example shows the color as border, it can be applied via the CSS property "border" or "border-color".

```
.border, #border, table{ border:4px solid rgb(215, 156, 149) }
```

If only the border color should be changed use the property `border-color`.

```
.border{ border-color:rgb(215, 156, 149) }
```

If you want to add a box shadow in that color use:



Here you see how a box with a 4 pixel `rgb(215, 156, 149)` colored shadow looks like.

```
.boxshadow{ -moz-box-shadow:4px 4px 4px  
4px rgb(215, 156, 149); -webkit-box-  
shadow:4px 4px 4px 4px rgb(215, 156, 149);  
box-shadow:4px 4px 4px 4px rgb(215, 156,  
149) }
```

Background

The CSS property to change the background color of an element to RGB 215, 156, 149 is called "background". The background property can be set on classes, ids or directly on the HTML element.

```
.background, #background, body{  
background: rgb(215, 156, 149) }
```

If only the background color should be changed can be used:

```
.background{ background-color: rgb(215,  
156, 149) }
```

This example shows the color as background, it is applied via the CSS property "background".

To optimize and compress your CSS code, you can use our [online CSS compressor and optimizer](#) based on csstidy. If you want to create a linear or radial gradient as background or border, check our [CSS Gradient Generator](#).

Hey! You found this booklet interesting? Support Converting Colors with the new Membership Option!

The pro membership hides all ads, plus gives you double the colors in the color bucket, and more awesome pro features!

[Learn more, Memberships starting at \\$2.50/m!](#)

**Follow me
on Twitter!**

@ConvertingColor