

Converting Colors

RGB(215, 170, 163)

Have a look what the booklet for
RGB(215, 170, 163) contains.

RGB(215, 170, 163)	3
<i>Conversions</i>	4
<i>Details</i>	6
<i>Harmonies</i>	11
<i>Previews</i>	23
<i>Color Blindness Simulation</i>	26
<i>CSS Examples</i>	29

Color

RGB(215, 170, 163)

Conversions

Conversions Part 1

Format	Color
Hex	D7AAA3
RGB	215, 170, 163
RGB Percent	84%, 67%, 64%
CMY	0.1569, 0.3333, 0.3608
CMYK	0.00, 0.21, 0.24, 0.16
HSL	8°, 39%, 74%
HSV	8°, 24%, 84%
XYZ	49.0099, 45.8409, 40.9154
YIQ	182.6570, 29.0670, 7.3630

Conversions

Conversions Part 2

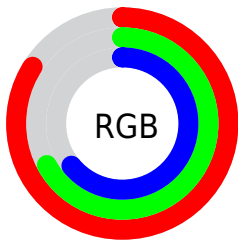
Format	Color
R _Y B	215, 171, 163
Decimal	14133923
CIE Lab	73.44, 15.42, 9.89
CIE LCh	73, 18.316, 32.668
Yxy	45.8409, 0.3610, 0.3376
Android (android.graphics.Color)	4292324003 (0xFFD7AAA3)
YUV	182.6570, -9.6909, 28.3648
Hunter-Lab	67.7059, 10.7246, 11.5645

Details

The RGB color **215, 170, 163** is a light color, and the websafe version is hex **CC9999**. A complement of this color would be **163, 208, 215**, and the grayscale version is **183, 183, 183**.

A 20% lighter version of the original color is **255, 225, 218**, and **159, 118, 111** is the 20% darker color. If you saturate the color by 10%, you get **215, 151, 142**, and if you desaturate by 10%, it is **215, 189, 185**.

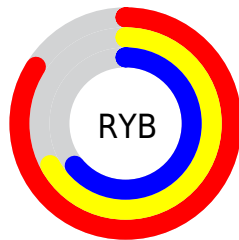
Distribution



Red (84%)

Green (67%)

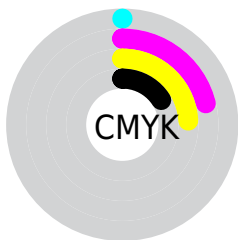
Blue (64%)



Red (84%)

Yellow (67%)

Blue (64%)

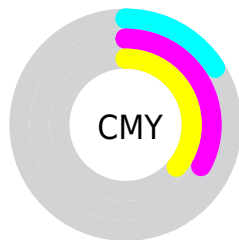


Cyan (0%)

Magenta (21%)

Yellow (24%)

Black (16%)



Cyan (16%)

Magenta (33%)

Yellow (36%)

Brightness & Saturation Gradients

These gradients show how the RGB color 215, 170, 163 changes by changing the brightness by 10 percent. The first figure shows a shift by +10% for each color and the second figure -10%.

Similar to the brightness gradients but the following saturation gradients show a change of the RGB color 215, 170, 163 by changing the saturation by 10% instead.


 215, 170, 163

255, 255, 255

 255, 225, 218

 255, 254, 246

 215, 170, 163

 187, 143, 137

 159, 118, 111

 133, 93, 87

 107, 69, 64

 82, 47, 42

 57, 25, 21

 37, 0, 0

 0, 0, 0

 215, 170, 163

 215, 170, 163

■ 215, 151, 142

■ 215, 189, 185

■ 215, 133, 120

■ 215, 207, 206

■ 215, 114, 99

■ 215, 226, 227

■ 215, 96, 77

■ 215, 244, 249

■ 215, 77, 55

■ 215, 255, 255

■ 215, 58, 34

■ 215, 40, 12

■ 215, 29, 0

Harmonies

Analogous

The Analogous color harmony consists of three colors that are next to each other on the color wheel.



214, 169, 179



215, 170, 163



207, 174, 151

Triad

The Triadic color harmony groups three colors that are evenly spaced from another and form a triangle on the color wheel.



215, 170, 163



155, 189, 164



163, 181, 214

Complementary

The Complementary color scheme is a pair of colors which are on the opposite of each other on the color wheel.



215, 170, 163



163, 208, 215

Split Complementary

Split-complementary colors differ from the complementary color scheme. The scheme consists of three colors, the original color and two neighbors of the complement color.



144, 186, 210



215, 170, 163



140, 190, 181

Square

The Square scheme is like the rectangle color scheme, but the four colors are evenly spaced on the color wheel.



215, 170, 163



173, 185, 152



136, 189, 198



185, 176, 209

Rectangle

The Rectangle color scheme consists of four colors that form a rectangle on the color wheel.



215, 170, 163



198, 178, 147



136, 189, 198



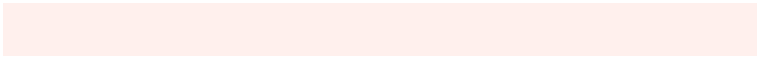
156, 183, 213

Sweetspot

The Sweet Spot groups the original color and five complimentary colors.



215, 170, 163



255, 240, 237



215, 163, 208



128, 119, 117



0, 0, 0



128, 128, 128

Same Dimension

The Same Dimension uses a secret algorithm to generate beautiful new colors.



215, 170, 163



255, 191, 181



215, 196, 163



107, 98, 96



171, 23, 0



43, 6, 0

Inverse Universe

The Inverse Universe completely reimagines the original color for something new.



163, 208, 215



181, 245, 255



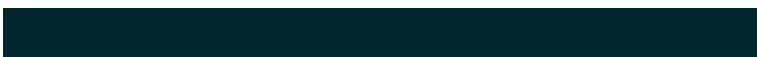
163, 182, 215



96, 106, 107



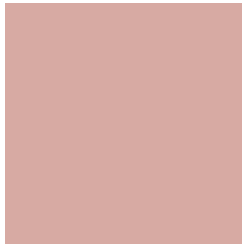
0, 148, 171



0, 38, 43

Previews

White Background



This preview shows how the RGB color 215, 170, 163 looks on a white background.

Color Contrast Check

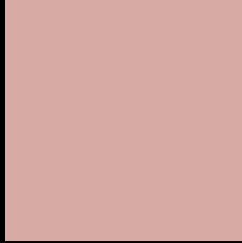
Large Text (above 18pt) WCAG AA × Fail

Any Text WCAG AA × Fail

Large Text (above 18pt) WCAG AAA × Fail

Any Text WCAG AAA × Fail

Black Background



This preview shows how the RGB color 215, 170, 163 looks on a black background.

Color Contrast Check

Large Text (above 18pt) WCAG AA ✓ Pass

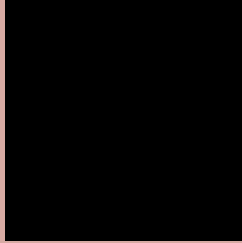
Any Text WCAG AA ✓ Pass

Large Text (above 18pt) WCAG AAA ✓ Pass

Any Text WCAG AAA ✓ Pass

If you want to check with other color combinations, try the [Color Contrast Checker](#).

RGB 215, 170, 163 Background



This preview shows how black text looks on a background with the RGB color 215, 170, 163.



This preview shows how white text looks on a background with the RGB color 215, 170, 163.

Color Blindness Simulation

Color vision deficiency is a very complex topic, and I could not describe the different causes any better than Wikipedia does, so if you want to learn more, you should check out their [article about color blindness](#).

Dichromacy



Original Color
215, 170, 163

Protanopia
187, 180, 168

Deuteranopia
205, 174, 162



Tritanopia
217, 167, 180

Trichromacy



Original Color
215, 170, 163

Protanomaly
197, 176, 166

Deuteranomaly
209, 173, 162

Tritanomaly
216, 168, 174

Monochromacy



Original Color
215, 170, 163

Achromatopsia
183, 183, 183

Achromatomaly
195, 178, 176

CSS Examples

Text

The CSS property to change the color of the text to RGB 215, 170, 163 is called "color". The color property can be set on classes, ids or directly on the HTML element.

This example shows how text in the color rgb(215, 170, 163) looks like.

```
.text, #text, p{  
    color:rgb(215, 170, 163)  
}
```

If you want to add a text shadow in that color use the text-shadow property, you can generate a text shadow directly with our [CSS Text Shadow Generator](#).

Here you see how black text with a 4 pixel rgb(215, 170, 163) colored shadow looks like.

```
.shadow{ text-shadow: 4px 4px 2px rgb(215, 170, 163) }
```

Border

The CSS property to change the border of an element to RGB 215, 170, 163 is called "border". The border property can be set on classes, ids or directly on the HTML element.

This example shows the color as border, it can be applied via the CSS property "border" or "border-color".

```
.border, #border, table{ border:4px solid rgb(215, 170, 163) }
```

If only the border color should be changed use the property `border-color`.

```
.border{ border-color:rgb(215, 170, 163) }
```

If you want to add a box shadow in that color use:

Here you see how a box with a 4 pixel `rgb(215, 170, 163)` colored shadow looks like.

```
.boxshadow{ -moz-box-shadow:4px 4px 4px  
4px rgb(215, 170, 163); -webkit-box-  
shadow:4px 4px 4px 4px rgb(215, 170, 163);  
box-shadow:4px 4px 4px 4px rgb(215, 170,  
163) }
```

Background

The CSS property to change the background color of an element to RGB 215, 170, 163 is called "background". The background property can be set on classes, ids or directly on the HTML element.

```
.background, #background, body{  
background: rgb(215, 170, 163) }
```

If only the background color should be changed can be used:

```
.background{ background-color: rgb(215,  
170, 163) }
```

This example shows the color as background, it is applied via the CSS property "background".

To optimize and compress your CSS code, you can use our [online CSS compressor and optimizer](#) based on csstidy. If you want to create a linear or radial gradient as background or border, check our [CSS Gradient Generator](#).

Hey! You found this booklet interesting? Support Converting Colors with the new Membership Option!

The pro membership hides all ads, plus gives you double the colors in the color bucket, and more awesome pro features!

[Learn more, Memberships starting at \\$2.50/m!](#)

**Follow me
on Twitter!**

@ConvertingColor