

Converting Colors

RGB(216, 125, 137)

Have a look what the booklet for
RGB(216, 125, 137) contains.

RGB(216, 125, 137)	3
<i>Conversions</i>	4
<i>Details</i>	6
<i>Harmonies</i>	11
<i>Previews</i>	23
<i>Color Blindness Simulation</i>	26
<i>CSS Examples</i>	29

Color

RGB(216, 125, 137)

Conversions

Conversions Part 1

Format	Color
Hex	D87D89
RGB	216, 125, 137
RGB Percent	85%, 49%, 54%
CMY	0.1529, 0.5098, 0.4627
CMYK	0.00, 0.42, 0.37, 0.15
HSL	352°, 54%, 67%
HSV	352°, 42%, 85%
XYZ	40.1679, 31.0723, 27.5474
YIQ	153.5770, 50.3840, 23.0240

Conversions

Conversions Part 2

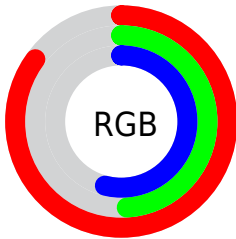
Format	Color
R _Y B	216, 125, 137
Decimal	14187913
CIE Lab	62.57, 36.56, 8.97
CIE LCh	63, 37.644, 13.784
Yxy	31.0723, 0.4066, 0.3145
Android (android.graphics.Color)	4292377993 (0xFFD87D89)
YUV	153.5770, -8.1725, 54.7450
Hunter-Lab	55.7425, 31.0770, 9.7193

Details

The RGB color **216, 125, 137** is a light color, and the websafe version is hex **CC6666**. A complement of this color would be **125, 216, 204**, and the grayscale version is **154, 154, 154**.

A 20% lighter version of the original color is **255, 179, 190**, and **158, 74, 87** is the 20% darker color. If you saturate the color by 10%, you get **216, 103, 118**, and if you desaturate by 10%, it is **216, 147, 156**.

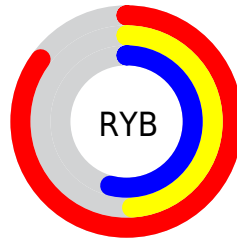
Distribution



Red (85%)

Green (49%)

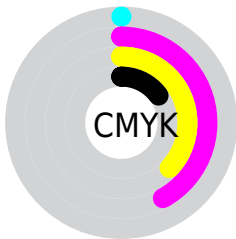
Blue (54%)



Red (85%)

Yellow (49%)

Blue (54%)

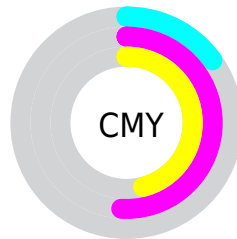


Cyan (0%)

Magenta (42%)

Yellow (37%)

Black (15%)



Cyan (15%)

Magenta (51%)

Yellow (46%)

Brightness & Saturation Gradients

These gradients show how the RGB color 216, 125, 137 changes by changing the brightness by 10 percent. The first figure shows a shift by +10% for each color and the second figure -10%.

Similar to the brightness gradients but the following saturation gradients show a change of the RGB color 216, 125, 137 by changing the saturation by 10% instead.

 216, 125, 137

255, 255, 255

 255, 179, 190

 255, 207, 218

 255, 236, 247

 216, 125, 137

 187, 99, 112

 158, 74, 87

 131, 49, 64

 103, 23, 42

 76, 0, 22

 52, 0, 0

 12, 0, 0

 0, 0, 0


 216, 125, 137


 216, 125, 137

 216, 103, 118

 216, 147, 156

 216, 82, 99


 216, 168, 175

 216, 60, 81

 216, 190, 193

 216, 39, 62

 216, 211, 212

 216, 17, 43

 216, 233, 231

 216, 0, 28

 216, 255, 250

 216, 255, 255

Harmonies

Analogous

The Analogous color harmony consists of three colors that are next to each other on the color wheel.



205, 127, 171



216, 125, 137



209, 132, 107

Triad

The Triadic color harmony groups three colors that are evenly spaced from another and form a triangle on the color wheel.



216, 125, 137



120, 163, 102



63, 160, 215

Complementary

The Complementary color scheme is a pair of colors which are on the opposite of each other on the color wheel.



216, 125, 137



125, 216, 204

Split Complementary

Split-complementary colors differ from the complementary color scheme. The scheme consists of three colors, the original color and two neighbors of the complement color.



0, 167, 197



216, 125, 137



76, 168, 132

Square

The Square scheme is like the rectangle color scheme, but the four colors are evenly spaced on the color wheel.



216, 125, 137



158, 154, 85



0, 169, 166



127, 149, 216

Rectangle

The Rectangle color scheme consists of four colors that form a rectangle on the color wheel.



216, 125, 137



197, 139, 92



0, 169, 166



34, 163, 211

Sweetspot

The Sweet Spot groups the original color and five complimentary colors.



216, 125, 137



255, 222, 226



204, 125, 216



128, 107, 110



0, 0, 0



128, 128, 128

Same Dimension

The Same Dimension uses a secret algorithm to generate beautiful new colors.



216, 125, 137



255, 125, 142



216, 158, 125



107, 96, 98



171, 0, 23



43, 0, 6

Inverse Universe

The Inverse Universe completely reimagines the original color for something new.



216, 125, 137



255, 125, 142



125, 183, 216



107, 96, 98



171, 0, 23



43, 0, 6

Previews

White Background



This preview shows how the RGB color 216, 125, 137 looks on a white background.

Color Contrast Check

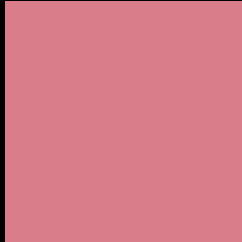
Large Text (above 18pt) WCAG AA × Fail

Any Text WCAG AA × Fail

Large Text (above 18pt) WCAG AAA × Fail

Any Text WCAG AAA × Fail

Black Background



This preview shows how the RGB color 216, 125, 137 looks on a black background.

Color Contrast Check

Large Text (above 18pt) WCAG AA ✓ Pass

Any Text WCAG AA ✓ Pass

Large Text (above 18pt) WCAG AAA ✓ Pass

Any Text WCAG AAA ✓ Pass

If you want to check with other color combinations, try the [Color Contrast Checker](#).

RGB 216, 125, 137 Background



This preview shows how black text looks on a background with the RGB color 216, 125, 137.

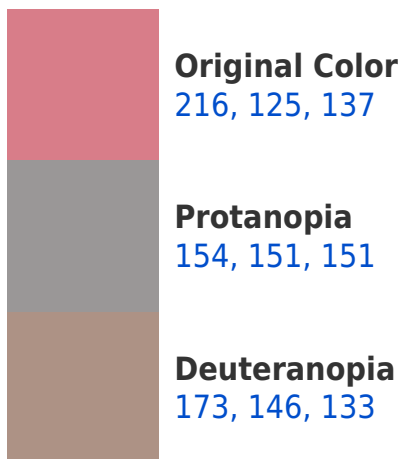


This preview shows how white text looks on a background with the RGB color 216, 125, 137.

Color Blindness Simulation

Color vision deficiency is a very complex topic, and I could not describe the different causes any better than Wikipedia does, so if you want to learn more, you should check out their [article about color blindness](#).

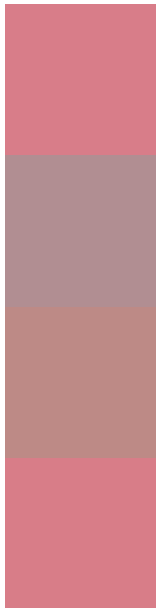
Dichromacy





Tritanopia
216, 125, 135

Trichromacy



Original Color
216, 125, 137

Protanomaly
177, 142, 146

Deuteranomaly
189, 138, 134

Tritanomaly
216, 125, 136

Monochromacy



Original Color
216, 125, 137

Achromatopsia
154, 154, 154

Achromatomaly
177, 143, 148

CSS Examples

Text

The CSS property to change the color of the text to RGB 216, 125, 137 is called "color". The color property can be set on classes, ids or directly on the HTML element.

This example shows how text in the color `rgb(216, 125, 137)` looks like.

```
.text, #text, p{  
    color:rgb(216, 125, 137)  
}
```

If you want to add a text shadow in that color use the text-shadow property, you can generate a text shadow directly with our [CSS Text Shadow Generator](#).

Here you see how black text with a 4 pixel rgb(216, 125, 137) colored shadow looks like.

```
.shadow{ text-shadow: 4px 4px 2px rgb(216, 125, 137) }
```

Border

The CSS property to change the border of an element to RGB 216, 125, 137 is called "border". The border property can be set on classes, ids or directly on the HTML element.

This example shows the color as border, it can be applied via the CSS property "border" or "border-color".

```
.border, #border, table{ border:4px solid rgb(216, 125, 137) }
```

If only the border color should be changed use the property `border-color`.

```
.border{ border-color:rgb(216, 125, 137) }
```

If you want to add a box shadow in that color use:

Here you see how a box with a 4 pixel `rgb(216, 125, 137)` colored shadow looks like.

```
.boxshadow{ -moz-box-shadow:4px 4px 4px 4px rgb(216, 125, 137); -webkit-box-shadow:4px 4px 4px 4px rgb(216, 125, 137); box-shadow:4px 4px 4px 4px rgb(216, 125, 137) }
```

Background

The CSS property to change the background color of an element to RGB 216, 125, 137 is called "background". The background property can be set on classes, ids or directly on the HTML element.

```
.background, #background, body{  
background: rgb(216, 125, 137) }
```

If only the background color should be changed can be used:

```
.background{ background-color: rgb(216,  
125, 137) }
```

This example shows the color as background, it is applied via the CSS property "background".

To optimize and compress your CSS code, you can use our [online CSS compressor and optimizer](#) based on csstidy. If you want to create a linear or radial gradient as background or border, check our [CSS Gradient Generator](#).

Hey! You found this booklet interesting? Support Converting Colors with the new Membership Option!

The pro membership hides all ads, plus gives you double the colors in the color bucket, and more awesome pro features!

[Learn more, Memberships starting at \\$2.50/m!](#)

**Follow me
on Twitter!**

@ConvertingColor