

# Converting Colors

RGB(216, 136, 159)

Have a look what the booklet for  
RGB(216, 136, 159) contains.

<b>RGB(216, 136, 159)</b> .....	3
<i><b>Conversions</b></i> .....	4
<i><b>Details</b></i> .....	6
<i><b>Harmonies</b></i> .....	11
<i><b>Previews</b></i> .....	23
<i><b>Color Blindness Simulation</b></i> .....	26
<i><b>CSS Examples</b></i> .....	29

# Color

**RGB(216, 136, 159)**

# Conversions

## Conversions Part 1

Format	Color
Hex	D8889F
RGB	216, 136, 159
RGB Percent	85%, 53%, 62%
CMY	0.1529, 0.4667, 0.3765
CMYK	0.00, 0.37, 0.26, 0.15
HSL	343°, 51%, 69%
HSV	343°, 37%, 85%
XYZ	43.3811, 34.7105, 37.2142
YIQ	162.5420, 40.2970, 24.1130

# Conversions

## Conversions Part 2

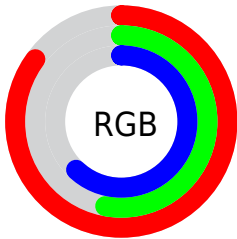
<b>Format</b>	<b>Color</b>
<b>R<sub>YB</sub></b>	216, 136, 159
Decimal	14190751
CIE Lab	65.52, 33.58, 0.72
CIE LCh	66, 33.585, 1.232
Yxy	34.7105, 0.3762, 0.3010
Android (android.graphics.Color)	4292380831 (0xFFD8889F)
YUV	162.5420, -1.7462, 46.8827
Hunter-Lab	58.9156, 28.3319, 3.7902

# Details

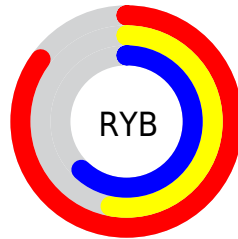
The RGB color **216, 136, 159** is a light color, and the websafe version is hex **CC9999**. A complement of this color would be **136, 216, 193**, and the grayscale version is **163, 163, 163**.

A 20% lighter version of the original color is **255, 190, 214**, and **159, 85, 108** is the 20% darker color. If you saturate the color by 10%, you get **216, 114, 144**, and if you desaturate by 10%, it is **216, 158, 174**.

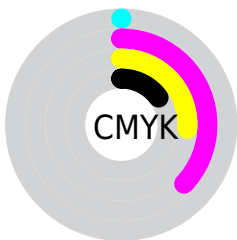
# Distribution



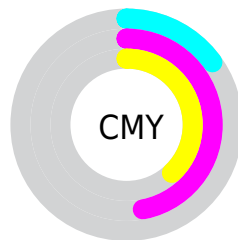
- Red (85%)
- Green (53%)
- Blue (62%)



- Red (85%)
- Yellow (53%)
- Blue (62%)



- Cyan (0%)
- Magenta (37%)
- Yellow (26%)
- Black (15%)



- Cyan (15%)
- Magenta (47%)
- Yellow (38%)


# Brightness & Saturation Gradients

These gradients show how the RGB color 216, 136, 159 changes by changing the brightness by 10 percent. The first figure shows a shift by +10% for each color and the second figure -10%.


Similar to the brightness gradients but the following saturation gradients show a change of the RGB color 216, 136, 159 by changing the saturation by 10% instead.



 216, 136, 159

 216, 136, 159

255, 255, 255

 187, 110, 133

 255, 190, 214

 159, 85, 108

 255, 218, 242

 132, 60, 84

 255, 247, 255

 105, 36, 60


 79, 9, 39

 54, 0, 18

 28, 0, 1

 0, 0, 0

 216, 136, 159

 216, 136, 159

 216, 114, 144

 216, 158, 174

 216, 93, 128

 216, 179, 190

 216, 71, 113

 216, 201, 205

 216, 50, 97

 216, 222, 221

 216, 28, 82

 216, 244, 236

 216, 6, 67

 216, 255, 251

 216, 0, 62

 216, 255, 255

# Harmonies

## Analogous

The Analogous color harmony consists of three colors that are next to each other on the color wheel.



198, 141, 189



216, 136, 159



217, 139, 129

# Triad

The Triadic color harmony groups three colors that are evenly spaced from another and form a triangle on the color wheel.



216, 136, 159



146, 167, 107



70, 170, 211

# Complementary

The Complementary color scheme is a pair of colors which are on the opposite of each other on the color wheel.



216, 136, 159



136, 216, 193

# Split Complementary

Split-complementary colors differ from the complementary color scheme. The scheme consists of three colors, the original color and two neighbors of the complement color.



45, 174, 189



216, 136, 159



111, 173, 129

# Square

The Square scheme is like the rectangle color scheme, but the four colors are evenly spaced on the color wheel.



216, 136, 159



178, 158, 99



73, 175, 159



119, 162, 219

# Rectangle

The Rectangle color scheme consists of four colors that form a rectangle on the color wheel.



216, 136, 159



209, 144, 113



73, 175, 159



57, 172, 205



# Sweetspot

The Sweet Spot groups the original color and five complimentary colors.



216, 136, 159



255, 227, 235



192, 136, 216



128, 111, 116



0, 0, 0



128, 128, 128



# Same Dimension

The Same Dimension uses a secret algorithm to generate beautiful new colors.



216, 136, 159



255, 143, 175



216, 152, 136



107, 96, 99



171, 0, 49



43, 0, 12



# Inverse Universe

The Inverse Universe completely reimagines the original color for something new.



216, 136, 159



255, 143, 175



136, 200, 216



107, 96, 99



171, 0, 49



43, 0, 12



# Previews

## White Background



This preview shows how the RGB color 216, 136, 159 looks on a white background.

## Color Contrast Check

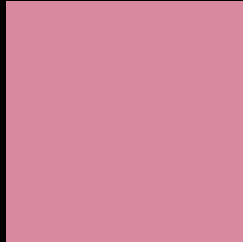
Large Text (above 18pt) WCAG AA × Fail

Any Text WCAG AA × Fail

Large Text (above 18pt) WCAG AAA × Fail

Any Text WCAG AAA × Fail

# Black Background



This preview shows how the RGB color 216, 136, 159 looks on a black background.

## Color Contrast Check

Large Text (above 18pt) WCAG AA ✓ Pass

Any Text WCAG AA ✓ Pass

Large Text (above 18pt) WCAG AAA ✓ Pass

Any Text WCAG AAA ✓ Pass

If you want to check with other color combinations, try the [Color Contrast Checker](#).



## RGB 216, 136, 159 Background



This preview shows how black text looks on a background with the RGB color 216, 136, 159.



This preview shows how white text looks on a background with the RGB color 216, 136, 159.

# Color Blindness Simulation

Color vision deficiency is a very complex topic, and I could not describe the different causes any better than Wikipedia does, so if you want to learn more, you should check out their [article about color blindness](#).


## Dichromacy



**Original Color**  
216, 136, 159

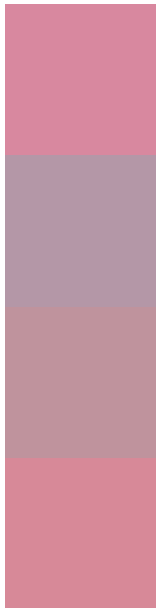
**Protanopia**  
159, 159, 172

**Deuteranopia**  
176, 154, 156



**Tritanopia**  
215, 138, 148

# Trichromacy



**Original Color**  
216, 136, 159

**Protanomaly**  
180, 151, 167

**Deuteranomaly**  
191, 147, 157

**Tritanomaly**  
215, 137, 152

# Monochromacy



**Original Color**  
216, 136, 159

**Achromatopsia**  
163, 163, 163

**Achromatomaly**  
182, 153, 162

# CSS Examples

## Text

The CSS property to change the color of the text to RGB 216, 136, 159 is called "color". The color property can be set on classes, ids or directly on the HTML element.

This example shows how text in the color rgb(216, 136, 159) looks like.

```
.text, #text, p{  
    color:rgb(216, 136, 159)  
}
```

If you want to add a text shadow in that color use the text-shadow property, you can generate a text shadow directly with our [CSS Text Shadow Generator](#).

Here you see how black text with a 4 pixel rgb(216, 136, 159) colored shadow looks like.

```
.shadow{ text-shadow: 4px 4px 2px rgb(216, 136, 159) }
```

## Border

The CSS property to change the border of an element to RGB 216, 136, 159 is called "border". The border property can be set on classes, ids or directly on the HTML element.

This example shows the color as border, it can be applied via the CSS property "border" or "border-color".

```
.border, #border, table{ border:4px solid rgb(216, 136, 159) }
```

If only the border color should be changed use the property `border-color`.

```
.border{ border-color:rgb(216, 136, 159) }
```

If you want to add a box shadow in that color use:

Here you see how a box with a 4 pixel `rgb(216, 136, 159)` colored shadow looks like.

```
.boxshadow{ -moz-box-shadow:4px 4px 4px  
4px rgb(216, 136, 159); -webkit-box-  
shadow:4px 4px 4px 4px rgb(216, 136, 159);  
box-shadow:4px 4px 4px 4px rgb(216, 136,  
159) }
```

# Background

The CSS property to change the background color of an element to RGB 216, 136, 159 is called "background". The background property can be set on classes, ids or directly on the HTML element.

```
.background, #background, body{  
background: rgb(216, 136, 159) }
```

If only the background color should be changed can be used:

```
.background{ background-color: rgb(216,  
136, 159) }
```

This example shows the color as background, it is applied via the CSS property "background".

To optimize and compress your CSS code, you can use our [online CSS compressor and optimizer](#) based on csstidy. If you want to create a linear or radial gradient as background or border, check our [CSS Gradient Generator](#).



Hey! You found this booklet interesting? Support Converting Colors with the new Membership Option!

The pro membership hides all ads, plus gives you double the colors in the color bucket, and more awesome pro features!

**[Learn more, Memberships starting at \\$2.50/m!](#)**

**Follow me  
on Twitter!**

@ConvertingColor