

Converting Colors

RGB(216, 184, 181)

Have a look what the booklet for
RGB(216, 184, 181) contains.

RGB(216, 184, 181)	3
<i>Conversions</i>	4
<i>Details</i>	6
<i>Harmonies</i>	11
<i>Previews</i>	23
<i>Color Blindness Simulation</i>	26
<i>CSS Examples</i>	29

Color

RGB(216, 184, 181)

Conversions

Conversions Part 1

Format	Color
Hex	D8B8B5
RGB	216, 184, 181
RGB Percent	85%, 72%, 71%
CMY	0.1529, 0.2784, 0.2902
CMYK	0.00, 0.15, 0.16, 0.15
HSL	5°, 31%, 78%
HSV	5°, 16%, 85%
XYZ	53.7999, 52.2161, 50.9592
YIQ	193.2260, 20.0350, 5.8510

Conversions

Conversions Part 2

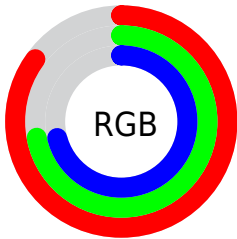
Format	Color
R _Y B	216, 184, 181
Decimal	14203061
CIE Lab	77.41, 10.97, 5.77
CIE LCh	77, 12.400, 27.736
Yxy	52.2161, 0.3427, 0.3326
Android (android.graphics.Color)	4292393141 (0xFFD8B8B5)
YUV	193.2260, -6.0274, 19.9728
Hunter-Lab	72.2607, 6.4414, 8.7704

Details

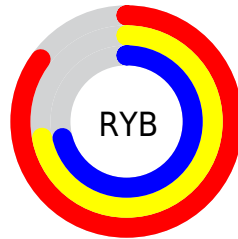
The RGB color **216, 184, 181** is a light color, and the websafe version is hex **FFCCCC**. A complement of this color would be **181, 213, 216**, and the grayscale version is **193, 193, 193**.

A 20% lighter version of the original color is **255, 240, 237**, and **161, 131, 128** is the 20% darker color. If you saturate the color by 10%, you get **216, 164, 159**, and if you desaturate by 10%, it is **216, 204, 203**.

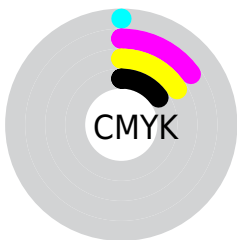
Distribution



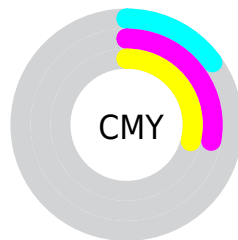
- Red (85%)
- Green (72%)
- Blue (71%)



- Red (85%)
- Yellow (72%)
- Blue (71%)



- Cyan (0%)
- Magenta (15%)
- Yellow (16%)
- Black (15%)



- Cyan (15%)
- Magenta (28%)
- Yellow (29%)

Brightness & Saturation Gradients

These gradients show how the RGB color 216, 184, 181 changes by changing the brightness by 10 percent. The first figure shows a shift by +10% for each color and the second figure -10%.

Similar to the brightness gradients but the following saturation gradients show a change of the RGB color 216, 184, 181 by changing the saturation by 10% instead.


 216, 184, 181

 216, 184, 181

255, 255, 255

 188, 157, 154

 255, 240, 237

 161, 131, 128

 134, 106, 103

 109, 82, 79

 84, 58, 56

 60, 37, 35

 38, 16, 13


 0, 0, 0

 216, 184, 181

 216, 184, 181

 216, 164, 159

 216, 204, 203

 216, 145, 138


 216, 223, 224

 216, 125, 116

 216, 243, 246

 216, 105, 95

 216, 255, 255

 216, 85, 73

 216, 66, 51

 216, 46, 30

 216, 26, 8

 216, 19, 0

Harmonies

Analogous

The Analogous color harmony consists of three colors that are next to each other on the color wheel.



214, 184, 193



216, 184, 181



211, 186, 172

Triad

The Triadic color harmony groups three colors that are evenly spaced from another and form a triangle on the color wheel.



216, 184, 181



176, 197, 179



178, 192, 214

Complementary

The Complementary color scheme is a pair of colors which are on the opposite of each other on the color wheel.



216, 184, 181



181, 213, 216

Split Complementary

Split-complementary colors differ from the complementary color scheme. The scheme consists of three colors, the original color and two neighbors of the complement color.



167, 196, 210



216, 184, 181



166, 198, 190

Square

The Square scheme is like the rectangle color scheme, but the four colors are evenly spaced on the color wheel.



216, 184, 181



189, 194, 171



162, 198, 201



193, 189, 211

Rectangle

The Rectangle color scheme consists of four colors that form a rectangle on the color wheel.



216, 184, 181



205, 189, 169



162, 198, 201



174, 194, 213

Sweetspot

The Sweet Spot groups the original color and five complimentary colors.



216, 184, 181



255, 243, 242



216, 181, 213



128, 121, 120



0, 0, 0



128, 128, 128

Same Dimension

The Same Dimension uses a secret algorithm to generate beautiful new colors.



216, 184, 181



255, 211, 207



216, 201, 181



107, 97, 96



171, 15, 0



43, 4, 0

Inverse Universe

The Inverse Universe completely reimagines the original color for something new.



181, 213, 216



207, 251, 255



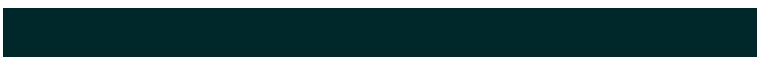
181, 196, 216



96, 106, 107



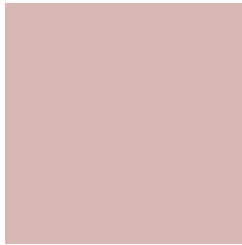
0, 156, 171



0, 40, 43

Previews

White Background



This preview shows how the RGB color 216, 184, 181 looks on a white background.

Color Contrast Check

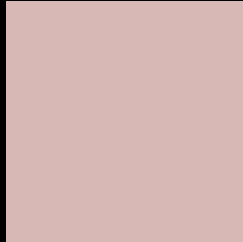
Large Text (above 18pt) WCAG AA × Fail

Any Text WCAG AA × Fail

Large Text (above 18pt) WCAG AAA × Fail

Any Text WCAG AAA × Fail

Black Background



This preview shows how the RGB color 216, 184, 181 looks on a black background.

Color Contrast Check

Large Text (above 18pt) WCAG AA ✓ Pass

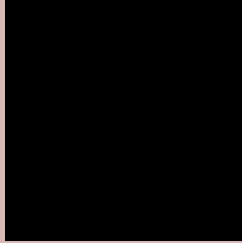
Any Text WCAG AA ✓ Pass

Large Text (above 18pt) WCAG AAA ✓ Pass

Any Text WCAG AAA ✓ Pass

If you want to check with other color combinations, try the [Color Contrast Checker](#).

RGB 216, 184, 181 Background



This preview shows how black text looks on a background with the RGB color 216, 184, 181.



This preview shows how white text looks on a background with the RGB color 216, 184, 181.

Color Blindness Simulation

Color vision deficiency is a very complex topic, and I could not describe the different causes any better than Wikipedia does, so if you want to learn more, you should check out their [article about color blindness](#).


Dichromacy



Original Color
216, 184, 181

Protanopia
196, 191, 185

Deuteranopia
214, 185, 181



Tritanopia
218, 182, 196

Trichromacy



Original Color

216, 184, 181

Protanomaly

203, 188, 184

Deuteranomaly

215, 185, 181

Tritanomaly

217, 183, 191

Monochromacy



Original Color

216, 184, 181

Achromatopsia

193, 193, 193

Achromatomaly

201, 190, 189

CSS Examples

Text

The CSS property to change the color of the text to RGB 216, 184, 181 is called "color". The color property can be set on classes, ids or directly on the HTML element.

This example shows how text in the color `rgb(216, 184, 181)` looks like.

```
.text, #text, p{  
    color:rgb(216, 184, 181)  
}
```

If you want to add a text shadow in that color use the text-shadow property, you can generate a text shadow directly with our [CSS Text Shadow Generator](#).

Here you see how black text with a 4 pixel rgb(216, 184, 181) colored shadow looks like.

```
.shadow{ text-shadow: 4px 4px 2px rgb(216, 184, 181) }
```

Border

The CSS property to change the border of an element to RGB 216, 184, 181 is called "border". The border property can be set on classes, ids or directly on the HTML element.

This example shows the color as border, it can be applied via the CSS property "border" or "border-color".

```
.border, #border, table{ border:4px solid rgb(216, 184, 181) }
```

If only the border color should be changed use the property `border-color`.

```
.border{ border-color:rgb(216, 184, 181) }
```

If you want to add a box shadow in that color use:

Here you see how a box with a 4 pixel `rgb(216, 184, 181)` colored shadow looks like.

```
.boxshadow{ -moz-box-shadow:4px 4px 4px  
4px rgb(216, 184, 181); -webkit-box-  
shadow:4px 4px 4px 4px rgb(216, 184, 181);  
box-shadow:4px 4px 4px 4px rgb(216, 184,  
181) }
```

Background

The CSS property to change the background color of an element to RGB 216, 184, 181 is called "background". The background property can be set on classes, ids or directly on the HTML element.

```
.background, #background, body{  
background: rgb(216, 184, 181) }
```

If only the background color should be changed can be used:

```
.background{ background-color: rgb(216,  
184, 181) }
```

This example shows the color as background, it is applied via the CSS property "background".

To optimize and compress your CSS code, you can use our [online CSS compressor and optimizer](#) based on csstidy. If you want to create a linear or radial gradient as background or border, check our [CSS Gradient Generator](#).

Hey! You found this booklet interesting? Support Converting Colors with the new Membership Option!

The pro membership hides all ads, plus gives you double the colors in the color bucket, and more awesome pro features!

[Learn more, Memberships starting at \\$2.50/m!](#)

**Follow me
on Twitter!**

@ConvertingColor