

Converting Colors

RGB(217, 116, 133)

Have a look what the booklet for
RGB(217, 116, 133) contains.

RGB(217, 116, 133)	3
<i>Conversions</i>	4
<i>Details</i>	6
<i>Harmonies</i>	11
<i>Previews</i>	23
<i>Color Blindness Simulation</i>	26
<i>CSS Examples</i>	29

Color

RGB(217, 116, 133)

Conversions

Conversions Part 1

Format	Color
Hex	D97485
RGB	217, 116, 133
RGB Percent	85%, 45%, 52%
CMY	0.1490, 0.5451, 0.4784
CMYK	0.00, 0.47, 0.39, 0.15
HSL	350°, 57%, 65%
HSV	350°, 47%, 85%
XYZ	39.0943, 28.9360, 25.7150
YIQ	148.1370, 54.7390, 26.6990

Conversions

Conversions Part 2

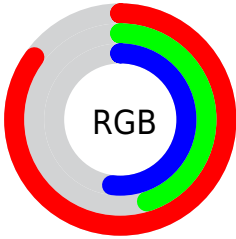
Format	Color
R _Y B	217, 116, 133
Decimal	14251141
CIE Lab	60.73, 41.13, 8.66
CIE LCh	61, 42.035, 11.889
Yxy	28.9360, 0.4170, 0.3087
Android (android.graphics.Color)	4292441221 (0xFFD97485)
YUV	148.1370, -7.4625, 60.3929
Hunter-Lab	53.7921, 35.5915, 9.3113

Details

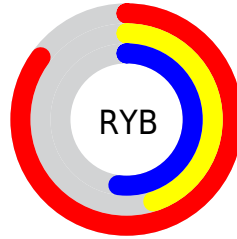
The RGB color **217, 116, 133** is a light color, and the websafe version is hex **CC6666**. A complement of this color would be **116, 217, 200**, and the grayscale version is **148, 148, 148**.

A 20% lighter version of the original color is **255, 170, 186**, and **159, 64, 84** is the 20% darker color. If you saturate the color by 10%, you get **217, 94, 115**, and if you desaturate by 10%, it is **217, 138, 151**.

Distribution



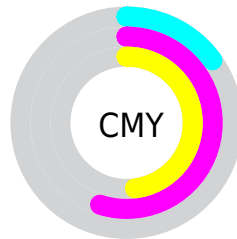
- Red (85%)
- Green (45%)
- Blue (52%)



- Red (85%)
- Yellow (45%)
- Blue (52%)



- Cyan (0%)
- Magenta (47%)
- Yellow (39%)
- Black (15%)




- Cyan (15%)
- Magenta (55%)
- Yellow (48%)

Brightness & Saturation Gradients

These gradients show how the RGB color 217, 116, 133 changes by changing the brightness by 10 percent. The first figure shows a shift by +10% for each color and the second figure -10%.

Similar to the brightness gradients but the following saturation gradients show a change of the RGB color 217, 116, 133 by changing the saturation by 10% instead.

 217, 116, 133

 217, 116, 133


255, 255, 255

 188, 90, 108

 255, 170, 186

 159, 64, 84

 255, 198, 214

 131, 38, 61

 255, 226, 242


 103, 7, 39


 76, 0, 19

 52, 0, 1

 3, 0, 0

 0, 0, 0

 217, 116, 133

 217, 116, 133

 217, 94, 115

 217, 138, 151

 217, 73, 97

 217, 159, 169

 217, 51, 79

 217, 181, 187

 217, 29, 61

 217, 203, 205

 217, 8, 43

 217, 224, 223

 217, 0, 37

 217, 246, 241

 217, 255, 255

Harmonies

Analogous

The Analogous color harmony consists of three colors that are next to each other on the color wheel.



204, 119, 170



217, 116, 133



210, 123, 99

Triad

The Triadic color harmony groups three colors that are evenly spaced from another and form a triangle on the color wheel.



217, 116, 133



114, 159, 89



0, 157, 216

Complementary

The Complementary color scheme is a pair of colors which are on the opposite of each other on the color wheel.



217, 116, 133



116, 217, 200

Split Complementary

Split-complementary colors differ from the complementary color scheme. The scheme consists of three colors, the original color and two neighbors of the complement color.



0, 163, 195



217, 116, 133



60, 164, 122

Square

The Square scheme is like the rectangle color scheme, but the four colors are evenly spaced on the color wheel.



217, 116, 133



155, 149, 72



0, 166, 161



113, 145, 219

Rectangle

The Rectangle color scheme consists of four colors that form a rectangle on the color wheel.



217, 116, 133



197, 132, 82



0, 166, 161



0, 159, 211

Sweetspot

The Sweet Spot groups the original color and five complimentary colors.



217, 116, 133



255, 219, 225



198, 116, 217



128, 106, 109



0, 0, 0



128, 128, 128

Same Dimension

The Same Dimension uses a secret algorithm to generate beautiful new colors.



217, 116, 133



255, 112, 136



217, 148, 116



110, 99, 101



173, 0, 29



46, 0, 8

Inverse Universe

The Inverse Universe completely reimagines the original color for something new.



217, 116, 133



255, 112, 136



116, 185, 217



110, 99, 101



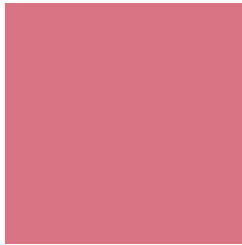
173, 0, 29



46, 0, 8

Previews

White Background



This preview shows how the RGB color 217, 116, 133 looks on a white background.

Color Contrast Check

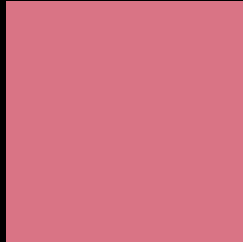
Large Text (above 18pt) WCAG AA ✓ Pass

Any Text WCAG AA ✗ Fail

Large Text (above 18pt) WCAG AAA ✗ Fail

Any Text WCAG AAA ✗ Fail

Black Background



This preview shows how the RGB color 217, 116, 133 looks on a black background.

Color Contrast Check

Large Text (above 18pt) WCAG AA ✓ Pass

Any Text WCAG AA ✓ Pass

Large Text (above 18pt) WCAG AAA ✓ Pass

Any Text WCAG AAA × Fail

If you want to check with other color combinations, try the [Color Contrast Checker](#).

RGB 217, 116, 133 Background



This preview shows how black text looks on a background with the RGB color 217, 116, 133.



This preview shows how white text looks on a background with the RGB color 217, 116, 133.

Color Blindness Simulation

Color vision deficiency is a very complex topic, and I could not describe the different causes any better than Wikipedia does, so if you want to learn more, you should check out their [article about color blindness](#).

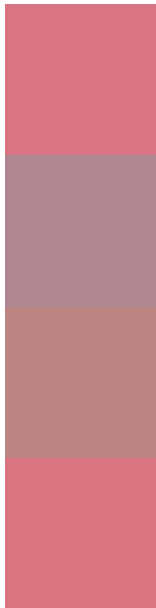
Dichromacy





Tritanopia
216, 117, 126

Trichromacy



Original Color
217, 116, 133

Protanomaly
174, 135, 144

Deuteranomaly
186, 133, 130

Tritanomaly
216, 117, 129

Monochromacy



Original Color
217, 116, 133

Achromatopsia
148, 148, 148

Achromatomaly
173, 136, 143

CSS Examples

Text

The CSS property to change the color of the text to RGB 217, 116, 133 is called "color". The color property can be set on classes, ids or directly on the HTML element.

This example shows how text in the color rgb(217, 116, 133) looks like.

```
.text, #text, p{  
    color:rgb(217, 116, 133)  
}
```

If you want to add a text shadow in that color use the text-shadow property, you can generate a text shadow directly with our [CSS Text Shadow Generator](#).

Here you see how black text with a 4 pixel rgb(217, 116, 133) colored shadow looks like.

```
.shadow{ text-shadow: 4px 4px 2px rgb(217, 116, 133) }
```

Border

The CSS property to change the border of an element to RGB 217, 116, 133 is called "border". The border property can be set on classes, ids or directly on the HTML element.

This example shows the color as border, it can be applied via the CSS property "border" or "border-color".

```
.border, #border, table{ border:4px solid rgb(217, 116, 133) }
```

If only the border color should be changed use the property `border-color`.

```
.border{ border-color:rgb(217, 116, 133) }
```

If you want to add a box shadow in that color use:

Here you see how a box with a 4 pixel `rgb(217, 116, 133)` colored shadow looks like.

```
.boxshadow{ -moz-box-shadow:4px 4px 4px  
4px rgb(217, 116, 133); -webkit-box-  
shadow:4px 4px 4px 4px rgb(217, 116, 133);  
box-shadow:4px 4px 4px 4px rgb(217, 116,  
133) }
```

Background

The CSS property to change the background color of an element to RGB 217, 116, 133 is called "background". The background property can be set on classes, ids or directly on the HTML element.

```
.background, #background, body{  
background: rgb(217, 116, 133) }
```

If only the background color should be changed can be used:

```
.background{ background-color: rgb(217,  
116, 133) }
```

This example shows the color as background, it is applied via the CSS property "background".

To optimize and compress your CSS code, you can use our [online CSS compressor and optimizer](#) based on csstidy. If you want to create a linear or radial gradient as background or border, check our [CSS Gradient Generator](#).

Hey! You found this booklet interesting? Support Converting Colors with the new Membership Option!

The pro membership hides all ads, plus gives you double the colors in the color bucket, and more awesome pro features!

[Learn more, Memberships starting at \\$2.50/m!](#)

**Follow me
on Twitter!**

@ConvertingColor