

Converting Colors

RGB(217, 149, 137)

Have a look what the booklet for
RGB(217, 149, 137) contains.

RGB(217, 149, 137)	3
<i>Conversions</i>	4
<i>Details</i>	6
<i>Harmonies</i>	11
<i>Previews</i>	23
<i>Color Blindness Simulation</i>	26
<i>CSS Examples</i>	29

Color

RGB(217, 149, 137)

Conversions

Conversions Part 1

Format	Color
Hex	D99589
RGB	217, 149, 137
RGB Percent	85%, 58%, 54%
CMY	0.1490, 0.4157, 0.4627
CMYK	0.00, 0.31, 0.37, 0.15
HSL	9°, 51%, 69%
HSV	9°, 37%, 85%
XYZ	43.8781, 38.0527, 28.6992
YIQ	167.9640, 44.3800, 10.6840

Conversions

Conversions Part 2

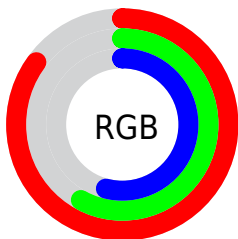
Format	Color
R _Y B	217, 151, 137
Decimal	14259593
CIE Lab	68.06, 24.11, 16.70
CIE LCh	68, 29.324, 34.708
Yxy	38.0527, 0.3966, 0.3440
Android (android.graphics.Color)	4292449673 (0xFFD99589)
YUV	167.9640, -15.2653, 43.0046
Hunter-Lab	61.6869, 19.0155, 15.5968

Details

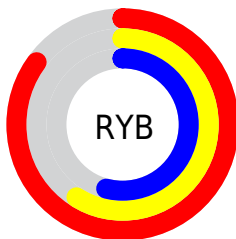
The RGB color **217, 149, 137** is a light color, and the websafe version is hex **CC9999**. A complement of this color would be **137, 205, 217**, and the grayscale version is **168, 168, 168**.

A 20% lighter version of the original color is **255, 204, 190**, and **160, 98, 87** is the 20% darker color. If you saturate the color by 10%, you get **217, 131, 115**, and if you desaturate by 10%, it is **217, 167, 159**.

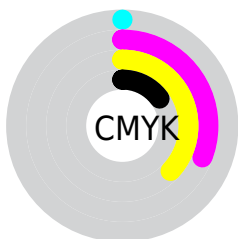
Distribution



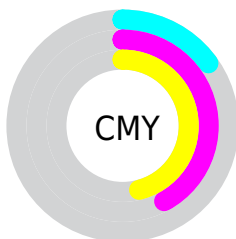
- Red (85%)
- Green (58%)
- Blue (54%)



- Red (85%)
- Yellow (59%)
- Blue (54%)



- Cyan (0%)
- Magenta (31%)
- Yellow (37%)
- Black (15%)




- Cyan (15%)
- Magenta (42%)
- Yellow (46%)

Brightness & Saturation Gradients

These gradients show how the RGB color 217, 149, 137 changes by changing the brightness by 10 percent. The first figure shows a shift by +10% for each color and the second figure -10%.

Similar to the brightness gradients but the following saturation gradients show a change of the RGB color 217, 149, 137 by changing the saturation by 10% instead.

 217, 149, 137

 217, 149, 137

255, 255, 255

 188, 123, 112

 255, 204, 190

 160, 98, 87

 255, 232, 218

 133, 73, 64

 255, 255, 247

 106, 50, 42

 79, 27, 21

 55, 4, 0

 29, 0, 1

 0, 0, 0

 217, 149, 137

 217, 149, 137

■ 217, 131, 115

■ 217, 167, 159

■ 217, 112, 94

■ 217, 186, 180

■ 217, 94, 72

■ 217, 204, 202

■ 217, 75, 50

■ 217, 223, 224

■ 217, 57, 28

■ 217, 241, 246

■ 217, 38, 7

■ 217, 255, 255

■ 217, 33, 0

Harmonies

Analogous

The Analogous color harmony consists of three colors that are next to each other on the color wheel.



218, 146, 163



217, 149, 137



203, 157, 119

Triad

The Triadic color harmony groups three colors that are evenly spaced from another and form a triangle on the color wheel.



217, 149, 137



121, 178, 142



138, 167, 218

Complementary

The Complementary color scheme is a pair of colors which are on the opposite of each other on the color wheel.



217, 149, 137



137, 205, 217

Split Complementary

Split-complementary colors differ from the complementary color scheme. The scheme consists of three colors, the original color and two neighbors of the complement color.



100, 175, 213



217, 149, 137



93, 181, 169

Square

The Square scheme is like the rectangle color scheme, but the four colors are evenly spaced on the color wheel.



217, 149, 137



152, 173, 122



81, 179, 195



175, 158, 209

Rectangle

The Rectangle color scheme consists of four colors that form a rectangle on the color wheel.



217, 149, 137



189, 163, 113



81, 179, 195



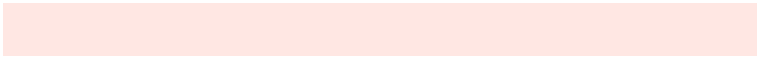
124, 170, 218

Sweetspot

The Sweet Spot groups the original color and five complimentary colors.



217, 149, 137



255, 231, 227



217, 137, 205



128, 113, 111



0, 0, 0



128, 128, 128

Same Dimension

The Same Dimension uses a secret algorithm to generate beautiful new colors.



217, 149, 137



255, 160, 143



217, 189, 137



110, 100, 99



173, 26, 0



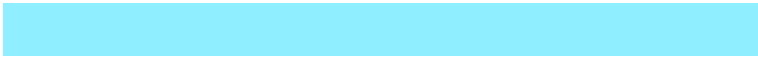
46, 7, 0

Inverse Universe

The Inverse Universe completely reimagines the original color for something new.



137, 205, 217



143, 238, 255



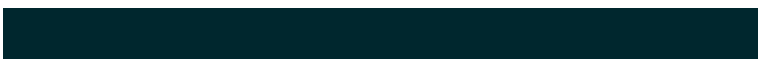
137, 165, 217



99, 108, 110



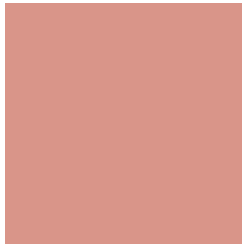
0, 147, 173



0, 39, 46

Previews

White Background



This preview shows how the RGB color 217, 149, 137 looks on a white background.

Color Contrast Check

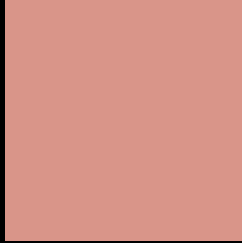
Large Text (above 18pt) WCAG AA × Fail

Any Text WCAG AA × Fail

Large Text (above 18pt) WCAG AAA × Fail

Any Text WCAG AAA × Fail

Black Background



This preview shows how the RGB color 217, 149, 137 looks on a black background.

Color Contrast Check

Large Text (above 18pt) WCAG AA ✓ Pass

Any Text WCAG AA ✓ Pass

Large Text (above 18pt) WCAG AAA ✓ Pass

Any Text WCAG AAA ✓ Pass

If you want to check with other color combinations, try the [Color Contrast Checker](#).

RGB 217, 149, 137 Background



This preview shows how black text looks on a background with the RGB color 217, 149, 137.



This preview shows how white text looks on a background with the RGB color 217, 149, 137.

Color Blindness Simulation

Color vision deficiency is a very complex topic, and I could not describe the different causes any better than Wikipedia does, so if you want to learn more, you should check out their [article about color blindness](#).

Dichromacy



Original Color
217, 149, 137

Protanopia
174, 166, 145

Deuteranopia
193, 160, 135



Tritanopia
219, 146, 157

Trichromacy



Original Color

217, 149, 137

Protanomaly

190, 160, 142

Deuteranomaly

202, 156, 136

Tritanomaly

218, 147, 150

Monochromacy



Original Color

217, 149, 137

Achromatopsia

168, 168, 168

Achromatomaly

186, 161, 157

CSS Examples

Text

The CSS property to change the color of the text to RGB 217, 149, 137 is called "color". The color property can be set on classes, ids or directly on the HTML element.

This example shows how text in the color `rgb(217, 149, 137)` looks like.

```
.text, #text, p{  
    color:rgb(217, 149, 137)  
}
```

If you want to add a text shadow in that color use the text-shadow property, you can generate a text shadow directly with our [CSS Text Shadow Generator](#).

Here you see how black text with a 4 pixel rgb(217, 149, 137) colored shadow looks like.

```
.shadow{ text-shadow: 4px 4px 2px rgb(217, 149, 137) }
```

Border

The CSS property to change the border of an element to RGB 217, 149, 137 is called "border". The border property can be set on classes, ids or directly on the HTML element.

This example shows the color as border, it can be applied via the CSS property "border" or "border-color".

```
.border, #border, table{ border:4px solid rgb(217, 149, 137) }
```

If only the border color should be changed use the property `border-color`.

```
.border{ border-color:rgb(217, 149, 137) }
```

If you want to add a box shadow in that color use:

Here you see how a box with a 4 pixel `rgb(217, 149, 137)` colored shadow looks like.

```
.boxshadow{ -moz-box-shadow:4px 4px 4px  
4px rgb(217, 149, 137); -webkit-box-  
shadow:4px 4px 4px 4px rgb(217, 149, 137);  
box-shadow:4px 4px 4px 4px rgb(217, 149,  
137) }
```

Background

The CSS property to change the background color of an element to RGB 217, 149, 137 is called "background". The background property can be set on classes, ids or directly on the HTML element.

```
.background, #background, body{  
background: rgb(217, 149, 137) }
```

If only the background color should be changed can be used:

```
.background{ background-color: rgb(217,  
149, 137) }
```

This example shows the color as background, it is applied via the CSS property "background".

To optimize and compress your CSS code, you can use our [online CSS compressor and optimizer](#) based on csstidy. If you want to create a linear or radial gradient as background or border, check our [CSS Gradient Generator](#).

Hey! You found this booklet interesting? Support Converting Colors with the new Membership Option!

The pro membership hides all ads, plus gives you double the colors in the color bucket, and more awesome pro features!

[Learn more, Memberships starting at \\$2.50/m!](#)

**Follow me
on Twitter!**

@ConvertingColor