

Converting Colors

RGB(217, 173, 167)

Have a look what the booklet for
RGB(217, 173, 167) contains.

RGB(217, 173, 167)	3
<i>Conversions</i>	4
<i>Details</i>	6
<i>Harmonies</i>	11
<i>Previews</i>	23
<i>Color Blindness Simulation</i>	26
<i>CSS Examples</i>	29

Color

RGB(217, 173, 167)

Conversions

Conversions Part 1

Format	Color
Hex	D9ADA7
RGB	217, 173, 167
RGB Percent	85%, 68%, 65%
CMY	0.1490, 0.3216, 0.3451
CMYK	0.00, 0.20, 0.23, 0.15
HSL	7°, 40%, 75%
HSV	7°, 23%, 85%
XYZ	50.5339, 47.4289, 43.0505
YIQ	185.4720, 28.1500, 7.4620

Conversions

Conversions Part 2

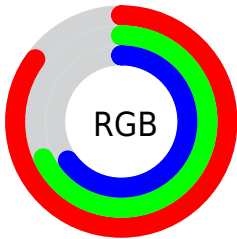
Format	Color
RYB	217, 174, 167
Decimal	14265767
CIELab	74.46, 15.13, 9.18
CIELCh	74, 17.698, 31.243
Yxy	47.4289, 0.3584, 0.3363
Android (android.graphics.Color)	4292455847 (0xFFD9ADA7)
YUV	185.4720, -9.1067, 27.6501
Hunter-Lab	68.8686, 10.4583, 11.1453

Details

The RGB color **217, 173, 167** is a light color, and the websafe version is hex **CC9999**. A complement of this color would be **167, 211, 217**, and the grayscale version is **186, 186, 186**.

A 20% lighter version of the original color is **255, 229, 222**, and **161, 121, 115** is the 20% darker color. If you saturate the color by 10%, you get **217, 154, 145**, and if you desaturate by 10%, it is **217, 192, 189**.

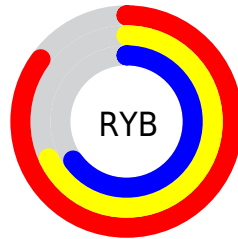
Distribution



Red (85%)

Green (68%)

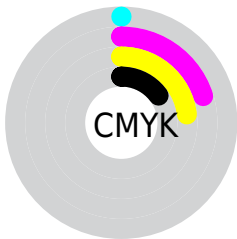
Blue (65%)



Red (85%)

Yellow (68%)

Blue (65%)

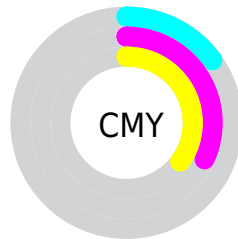


Cyan (0%)

Magenta (20%)

Yellow (23%)

Black (15%)



Cyan (15%)

Magenta (32%)

Yellow (35%)

Brightness & Saturation Gradients

These gradients show how the RGB color 217, 173, 167 changes by changing the brightness by 10 percent. The first figure shows a shift by +10% for each color and the second figure -10%.

Similar to the brightness gradients but the following saturation gradients show a change of the RGB color 217, 173, 167 by changing the saturation by 10% instead.

 217, 173, 167

255, 255, 255

 255, 229, 222

 255, 255, 251

 217, 173, 167

 189, 146, 141

 161, 121, 115

 135, 96, 91

 109, 72, 67

 83, 49, 45

 59, 28, 24

 38, 4, 0

 0, 0, 0

 217, 173, 167

 217, 173, 167

■ 217, 154, 145

■ 217, 192, 189

■ 217, 135, 124

■ 217, 211, 210

■ 217, 116, 102

■ 217, 230, 232

■ 217, 97, 80

■ 217, 249, 254

■ 217, 78, 59

■ 217, 255, 255

■ 217, 58, 37

■ 217, 39, 15

■ 217, 26, 0

Harmonies

Analogous

The Analogous color harmony consists of three colors that are next to each other on the color wheel.



216, 172, 183



217, 173, 167



210, 177, 155

Triad

The Triadic color harmony groups three colors that are evenly spaced from another and form a triangle on the color wheel.



217, 173, 167



159, 191, 167



166, 184, 215

Complementary

The Complementary color scheme is a pair of colors which are on the opposite of each other on the color wheel.



217, 173, 167



167, 211, 217

Split Complementary

Split-complementary colors differ from the complementary color scheme. The scheme consists of three colors, the original color and two neighbors of the complement color.



148, 189, 211



217, 173, 167



145, 193, 183

Square

The Square scheme is like the rectangle color scheme, but the four colors are evenly spaced on the color wheel.



217, 173, 167



177, 187, 155



140, 192, 199



187, 179, 211

Rectangle

The Rectangle color scheme consists of four colors that form a rectangle on the color wheel.



217, 173, 167



201, 180, 151



140, 192, 199



159, 186, 215

Sweetspot

The Sweet Spot groups the original color and five complimentary colors.



217, 173, 167



255, 239, 237



217, 167, 211



128, 119, 117



0, 0, 0



128, 128, 128

Same Dimension

The Same Dimension uses a secret algorithm to generate beautiful new colors.



217, 173, 167



255, 192, 184



217, 198, 167



110, 100, 99



173, 21, 0



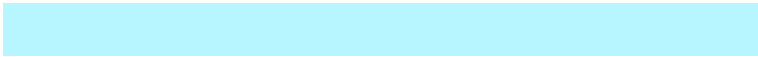
46, 6, 0

Inverse Universe

The Inverse Universe completely reimagines the original color for something new.



167, 211, 217



184, 246, 255



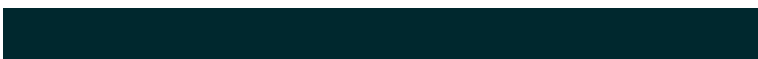
167, 186, 217



99, 108, 110



0, 153, 173



0, 40, 46

Previews

White Background



This preview shows how the RGB color 217, 173, 167 looks on a white background.

Color Contrast Check

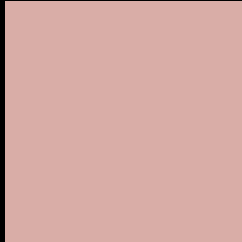
Large Text (above 18pt) WCAG AA × Fail

Any Text WCAG AA × Fail

Large Text (above 18pt) WCAG AAA × Fail

Any Text WCAG AAA × Fail

Black Background



This preview shows how the RGB color 217, 173, 167 looks on a black background.

Color Contrast Check

Large Text (above 18pt) WCAG AA ✓ Pass

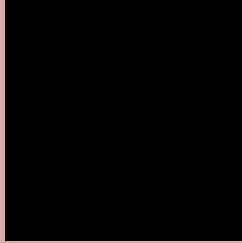
Any Text WCAG AA ✓ Pass

Large Text (above 18pt) WCAG AAA ✓ Pass

Any Text WCAG AAA ✓ Pass

If you want to check with other color combinations, try the [Color Contrast Checker](#).

RGB 217, 173, 167 Background



This preview shows how black text looks on a background with the RGB color 217, 173, 167.



This preview shows how white text looks on a background with the RGB color 217, 173, 167.

Color Blindness Simulation

Color vision deficiency is a very complex topic, and I could not describe the different causes any better than Wikipedia does, so if you want to learn more, you should check out their [article about color blindness](#).


Dichromacy



Original Color
217, 173, 167

Protanopia
189, 183, 172

Deuteranopia
207, 177, 166



Tritanopia
219, 170, 184

Trichromacy



Original Color

217, 173, 167

Protanomaly

199, 179, 170

Deuteranomaly

211, 176, 166

Tritanomaly

218, 171, 178

Monochromacy



Original Color

217, 173, 167

Achromatopsia

185, 185, 185

Achromatomaly

197, 181, 178

CSS Examples

Text

The CSS property to change the color of the text to RGB 217, 173, 167 is called "color". The color property can be set on classes, ids or directly on the HTML element.

This example shows how text in the color `rgb(217, 173, 167)` looks like.

```
.text, #text, p{  
    color:rgb(217, 173, 167)  
}
```

If you want to add a text shadow in that color use the text-shadow property, you can generate a text shadow directly with our [CSS Text Shadow Generator](#).

Here you see how black text with a 4 pixel rgb(217, 173, 167) colored shadow looks like.

```
.shadow{ text-shadow: 4px 4px 2px rgb(217, 173, 167) }
```

Border

The CSS property to change the border of an element to RGB 217, 173, 167 is called "border". The border property can be set on classes, ids or directly on the HTML element.

This example shows the color as border, it can be applied via the CSS property "border" or "border-color".

```
.border, #border, table{ border:4px solid rgb(217, 173, 167) }
```

If only the border color should be changed use the property `border-color`.

```
.border{ border-color:rgb(217, 173, 167) }
```

If you want to add a box shadow in that color use:

Here you see how a box with a 4 pixel `rgb(217, 173, 167)` colored shadow looks like.

```
.boxshadow{ -moz-box-shadow:4px 4px 4px 4px rgb(217, 173, 167); -webkit-box-shadow:4px 4px 4px 4px rgb(217, 173, 167); box-shadow:4px 4px 4px 4px rgb(217, 173, 167) }
```

Background

The CSS property to change the background color of an element to RGB 217, 173, 167 is called "background". The background property can be set on classes, ids or directly on the HTML element.

```
.background, #background, body{  
background: rgb(217, 173, 167) }
```

If only the background color should be changed can be used:

```
.background{ background-color: rgb(217,  
173, 167) }
```

This example shows the color as background, it is applied via the CSS property "background".

To optimize and compress your CSS code, you can use our [online CSS compressor and optimizer](#) based on csstidy. If you want to create a linear or radial gradient as background or border, check our [CSS Gradient Generator](#).

Hey! You found this booklet interesting? Support Converting Colors with the new Membership Option!

The pro membership hides all ads, plus gives you double the colors in the color bucket, and more awesome pro features!

[Learn more, Memberships starting at \\$2.50/m!](#)

**Follow me
on Twitter!**

@ConvertingColor