

Converting Colors

RGB(217, 177, 165)

Have a look what the booklet for
RGB(217, 177, 165) contains.

RGB(217, 177, 165)	3
<i>Conversions</i>	4
<i>Details</i>	6
<i>Harmonies</i>	11
<i>Previews</i>	23
<i>Color Blindness Simulation</i>	26
<i>CSS Examples</i>	29

Color

RGB(217, 177, 165)

Conversions

Conversions Part 1

Format	Color
Hex	D9B1A5
RGB	217, 177, 165
RGB Percent	85%, 69%, 65%
CMY	0.1490, 0.3059, 0.3529
CMYK	0.00, 0.18, 0.24, 0.15
HSL	14°, 41%, 75%
HSV	14°, 24%, 85%
XYZ	51.1289, 48.9126, 42.3436
YIQ	187.5920, 27.6920, 4.7480

Conversions

Conversions Part 2

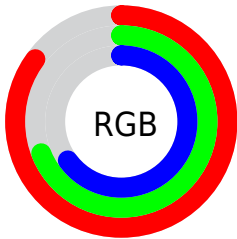
Format	Color
R _Y B	217, 181, 165
Decimal	14266789
CIE Lab	75.40, 12.69, 11.60
CIE LCh	75, 17.191, 42.422
Yxy	48.9126, 0.3591, 0.3435
Android (android.graphics.Color)	4292456869 (0xFFD9B1A5)
YUV	187.5920, -11.1379, 25.7908
Hunter-Lab	69.9375, 8.1045, 13.0592

Details

The RGB color **217, 177, 165** is a light color, and the websafe version is hex **CC9999**. A complement of this color would be **165, 205, 217**, and the grayscale version is **188, 188, 188**.

A 20% lighter version of the original color is **255, 233, 220**, and **161, 124, 113** is the 20% darker color. If you saturate the color by 10%, you get **217, 160, 143**, and if you desaturate by 10%, it is **217, 194, 187**.

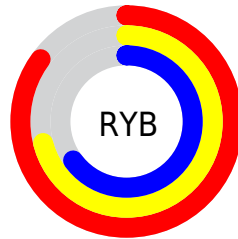
Distribution



Red (85%)

Green (69%)

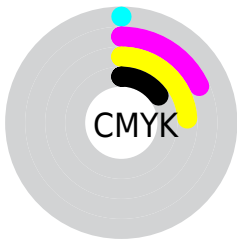
Blue (65%)



Red (85%)

Yellow (71%)

Blue (65%)

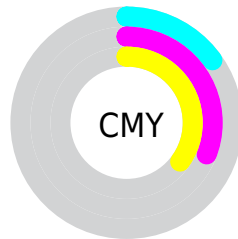


Cyan (0%)

Magenta (18%)

Yellow (24%)

Black (15%)



Cyan (15%)

Magenta (31%)

Yellow (35%)

Brightness & Saturation Gradients

These gradients show how the RGB color 217, 177, 165 changes by changing the brightness by 10 percent. The first figure shows a shift by +10% for each color and the second figure -10%.

Similar to the brightness gradients but the following saturation gradients show a change of the RGB color 217, 177, 165 by changing the saturation by 10% instead.

 217, 177, 165


255, 255, 255

 255, 233, 220

 255, 255, 249

 217, 177, 165

 189, 150, 139

 161, 124, 113

 135, 99, 89


 109, 75, 65


 84, 53, 43

 59, 31, 23

 38, 9, 0

 0, 0, 0

 217, 177, 165

 217, 177, 165

■ 217, 160, 143

■ 217, 194, 187

■ 217, 144, 122

■ 217, 210, 208

■ 217, 127, 100

■ 217, 227, 230

■ 217, 110, 78

■ 217, 244, 252

■ 217, 94, 57

■ 217, 255, 255

■ 217, 77, 35

■ 217, 60, 13

■ 217, 50, 0

Harmonies

Analogous

The Analogous color harmony consists of three colors that are next to each other on the color wheel.



219, 175, 180



217, 177, 165



207, 181, 156

Triad

The Triadic color harmony groups three colors that are evenly spaced from another and form a triangle on the color wheel.



217, 177, 165



156, 194, 176



177, 185, 216

Complementary

The Complementary color scheme is a pair of colors which are on the opposite of each other on the color wheel.



217, 177, 165



165, 205, 217

Split Complementary

Split-complementary colors differ from the complementary color scheme. The scheme consists of three colors, the original color and two neighbors of the complement color.



157, 190, 215



217, 177, 165



146, 195, 192

Square

The Square scheme is like the rectangle color scheme, but the four colors are evenly spaced on the color wheel.



217, 177, 165



173, 191, 162



145, 194, 206



197, 180, 209

Rectangle

The Rectangle color scheme consists of four colors that form a rectangle on the color wheel.



217, 177, 165



197, 185, 154



145, 194, 206



170, 187, 217

Sweetspot

The Sweet Spot groups the original color and five complimentary colors.



217, 177, 165



255, 241, 237



217, 165, 206



128, 120, 117



0, 0, 0



128, 128, 128

Same Dimension

The Same Dimension uses a secret algorithm to generate beautiful new colors.



217, 177, 165



255, 198, 181



217, 202, 165



110, 101, 99



173, 40, 0



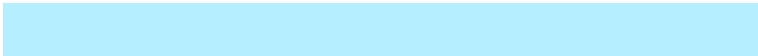
46, 11, 0

Inverse Universe

The Inverse Universe completely reimagines the original color for something new.



165, 205, 217



181, 238, 255



165, 180, 217



99, 107, 110



0, 133, 173



0, 35, 46

Previews

White Background



This preview shows how the RGB color 217, 177, 165 looks on a white background.

Color Contrast Check

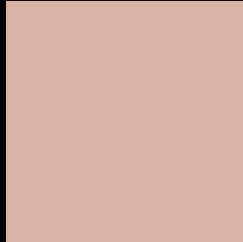
Large Text (above 18pt) WCAG AA × Fail

Any Text WCAG AA × Fail

Large Text (above 18pt) WCAG AAA × Fail

Any Text WCAG AAA × Fail

Black Background



This preview shows how the RGB color 217, 177, 165 looks on a black background.

Color Contrast Check

Large Text (above 18pt) WCAG AA ✓ Pass

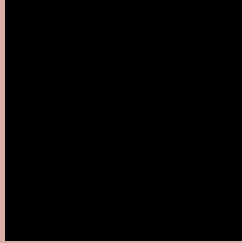
Any Text WCAG AA ✓ Pass

Large Text (above 18pt) WCAG AAA ✓ Pass

Any Text WCAG AAA ✓ Pass

If you want to check with other color combinations, try the [Color Contrast Checker](#).

RGB 217, 177, 165 Background



This preview shows how black text looks on a background with the RGB color 217, 177, 165.



This preview shows how white text looks on a background with the RGB color 217, 177, 165.

Color Blindness Simulation

Color vision deficiency is a very complex topic, and I could not describe the different causes any better than Wikipedia does, so if you want to learn more, you should check out their [article about color blindness](#).

Dichromacy



Original Color
217, 177, 165

Protanopia
193, 185, 169

Deuteranopia
212, 179, 165



Tritanopia
220, 174, 187

Trichromacy



Original Color

217, 177, 165

Protanomaly

202, 182, 168

Deuteranomaly

214, 178, 165

Tritanomaly

219, 175, 179

Monochromacy



Original Color

217, 177, 165

Achromatopsia

188, 188, 188

Achromatomaly

199, 184, 180

CSS Examples

Text

The CSS property to change the color of the text to RGB 217, 177, 165 is called "color". The color property can be set on classes, ids or directly on the HTML element.

This example shows how text in the color `rgb(217, 177, 165)` looks like.

```
.text, #text, p{  
    color:rgb(217, 177, 165)  
}
```

If you want to add a text shadow in that color use the text-shadow property, you can generate a text shadow directly with our [CSS Text Shadow Generator](#).

Here you see how black text with a 4 pixel rgb(217, 177, 165) colored shadow looks like.

```
.shadow{ text-shadow: 4px 4px 2px rgb(217, 177, 165) }
```

Border

The CSS property to change the border of an element to RGB 217, 177, 165 is called "border". The border property can be set on classes, ids or directly on the HTML element.

This example shows the color as border, it can be applied via the CSS property "border" or "border-color".

```
.border, #border, table{ border:4px solid rgb(217, 177, 165) }
```

If only the border color should be changed use the property `border-color`.

```
.border{ border-color:rgb(217, 177, 165) }
```

If you want to add a box shadow in that color use:

Here you see how a box with a 4 pixel `rgb(217, 177, 165)` colored shadow looks like.

```
.boxshadow{ -moz-box-shadow:4px 4px 4px  
4px rgb(217, 177, 165); -webkit-box-  
shadow:4px 4px 4px 4px rgb(217, 177, 165);  
box-shadow:4px 4px 4px 4px rgb(217, 177,  
165) }
```

Background

The CSS property to change the background color of an element to RGB 217, 177, 165 is called "background". The background property can be set on classes, ids or directly on the HTML element.

```
.background, #background, body{  
background: rgb(217, 177, 165) }
```

If only the background color should be changed can be used:

```
.background{ background-color: rgb(217,  
177, 165) }
```

This example shows the color as background, it is applied via the CSS property "background".

To optimize and compress your CSS code, you can use our [online CSS compressor and optimizer](#) based on csstidy. If you want to create a linear or radial gradient as background or border, check our [CSS Gradient Generator](#).

Hey! You found this booklet interesting? Support Converting Colors with the new Membership Option!

The pro membership hides all ads, plus gives you double the colors in the color bucket, and more awesome pro features!

[Learn more, Memberships starting at \\$2.50/m!](#)

**Follow me
on Twitter!**

@ConvertingColor