

Converting Colors

RGB(217, 188, 201)

Have a look what the booklet for
RGB(217, 188, 201) contains.

RGB(217, 188, 201)	3
<i>Conversions</i>	4
<i>Details</i>	6
<i>Harmonies</i>	11
<i>Previews</i>	23
<i>Color Blindness Simulation</i>	26
<i>CSS Examples</i>	29

Color

RGB(217, 188, 201)

Conversions

Conversions Part 1

Format	Color
Hex	D9BCC9
RGB	217, 188, 201
RGB Percent	85%, 74%, 79%
CMY	0.1490, 0.2627, 0.2118
CMYK	0.00, 0.13, 0.07, 0.15
HSL	333°, 28%, 79%
HSV	333°, 13%, 85%
XYZ	57.1411, 54.9352, 62.8502
YIQ	198.1530, 13.1110, 10.1910

Conversions

Conversions Part 2

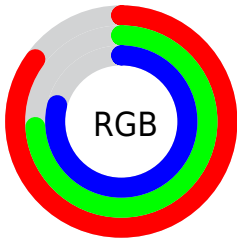
Format	Color
R _Y B	217, 188, 201
Decimal	14269641
CIE Lab	79.00, 12.49, -2.72
CIE LCh	79, 12.788, 347.697
Yxy	54.9352, 0.3267, 0.3140
Android (android.graphics.Color)	4292459721 (0xFFD9BCC9)
YUV	198.1530, 1.4036, 16.5288
Hunter-Lab	74.1183, 7.9067, 1.6065

Details

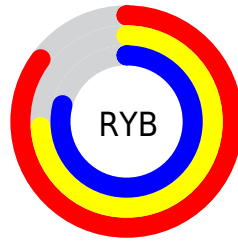
The RGB color **217, 188, 201** is a light color, and the websafe version is hex **CCCCCC**. A complement of this color would be **188, 217, 204**, and the grayscale version is **198, 198, 198**.

A 20% lighter version of the original color is **255, 244, 255**, and **162, 135, 147** is the 20% darker color. If you saturate the color by 10%, you get **217, 166, 189**, and if you desaturate by 10%, it is **217, 210, 213**.

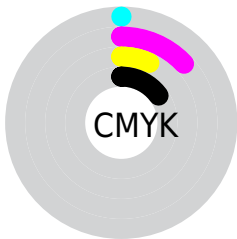
Distribution



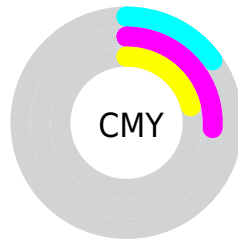
- Red (85%)
- Green (74%)
- Blue (79%)



- Red (85%)
- Yellow (74%)
- Blue (79%)



- Cyan (0%)
- Magenta (13%)
- Yellow (7%)
- Black (15%)




- Cyan (15%)
- Magenta (26%)
- Yellow (21%)

Brightness & Saturation Gradients

These gradients show how the RGB color 217, 188, 201 changes by changing the brightness by 10 percent. The first figure shows a shift by +10% for each color and the second figure -10%.

Similar to the brightness gradients but the following saturation gradients show a change of the RGB color 217, 188, 201 by changing the saturation by 10% instead.

 217, 188, 201

 217, 188, 201

255, 255, 255

 189, 161, 174

 255, 244, 255


 162, 135, 147

 136, 109, 121

 110, 85, 97

 86, 62, 73

 62, 40, 50

 40, 19, 29

 18, 0, 3

 0, 0, 0

■ 217, 188, 201

■ 217, 188, 201

■ 217, 166, 189

■ 217, 210, 213

■ 217, 145, 177

■ 217, 231, 225

■ 217, 123, 165

■ 217, 253, 237

■ 217, 101, 153

■ 217, 255, 249

■ 217, 80, 141

■ 217, 255, 255

■ 217, 58, 129

■ 217, 36, 117

■ 217, 14, 105

■ 217, 0, 97

Harmonies

Analogous

The Analogous color harmony consists of three colors that are next to each other on the color wheel.



206, 190, 212



217, 188, 201



221, 188, 189

Triad

The Triadic color harmony groups three colors that are evenly spaced from another and form a triangle on the color wheel.



217, 188, 201



198, 197, 173



168, 201, 213

Complementary

The Complementary color scheme is a pair of colors which are on the opposite of each other on the color wheel.



217, 188, 201



188, 217, 204

Split Complementary

Split-complementary colors differ from the complementary color scheme. The scheme consists of three colors, the original color and two neighbors of the complement color.



166, 203, 202



217, 188, 201



184, 200, 179

Square

The Square scheme is like the rectangle color scheme, but the four colors are evenly spaced on the color wheel.



217, 188, 201



210, 193, 173



172, 202, 190



177, 198, 218

Rectangle

The Rectangle color scheme consists of four colors that form a rectangle on the color wheel.



217, 188, 201



220, 189, 182



172, 202, 190



166, 202, 210

Sweetspot

The Sweet Spot groups the original color and five complimentary colors.



217, 188, 201



255, 245, 249



204, 188, 217



128, 121, 124



0, 0, 0



128, 128, 128

Same Dimension

The Same Dimension uses a secret algorithm to generate beautiful new colors.



217, 188, 201



255, 214, 232



217, 189, 188



110, 99, 104



173, 0, 78



46, 0, 21

Inverse Universe

The Inverse Universe completely reimagines the original color for something new.



217, 188, 201



255, 214, 232



188, 216, 217



110, 99, 104



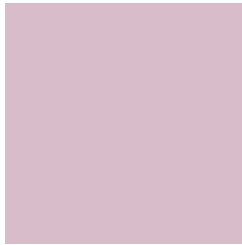
173, 0, 78



46, 0, 21

Previews

White Background



This preview shows how the RGB color 217, 188, 201 looks on a white background.

Color Contrast Check

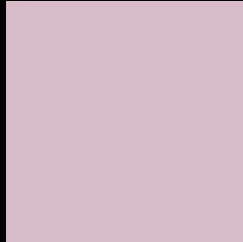
Large Text (above 18pt) WCAG AA × Fail

Any Text WCAG AA × Fail

Large Text (above 18pt) WCAG AAA × Fail

Any Text WCAG AAA × Fail

Black Background



This preview shows how the RGB color 217, 188, 201 looks on a black background.

Color Contrast Check

Large Text (above 18pt) WCAG AA ✓ Pass

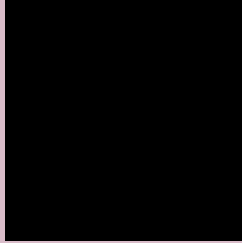
Any Text WCAG AA ✓ Pass

Large Text (above 18pt) WCAG AAA ✓ Pass

Any Text WCAG AAA ✓ Pass

If you want to check with other color combinations, try the [Color Contrast Checker](#).

RGB 217, 188, 201 Background



This preview shows how black text looks on a background with the RGB color 217, 188, 201.



This preview shows how white text looks on a background with the RGB color 217, 188, 201.

Color Blindness Simulation

Color vision deficiency is a very complex topic, and I could not describe the different causes any better than Wikipedia does, so if you want to learn more, you should check out their [article about color blindness](#).


Dichromacy



Original Color
217, 188, 201

Protanopia
197, 195, 205

Deuteranopia
212, 190, 201



Tritanopia
217, 188, 202

Trichromacy



Original Color
217, 188, 201

Protanomaly
204, 192, 204

Deuteranomaly
214, 189, 201

Tritanomaly
217, 188, 202

Monochromacy



Original Color
217, 188, 201

Achromatopsia
198, 198, 198

Achromatomaly
205, 194, 199

CSS Examples

Text

The CSS property to change the color of the text to RGB 217, 188, 201 is called "color". The color property can be set on classes, ids or directly on the HTML element.

This example shows how text in the color rgb(217, 188, 201) looks like.

```
.text, #text, p{  
    color:rgb(217, 188, 201)  
}
```

If you want to add a text shadow in that color use the text-shadow property, you can generate a text shadow directly with our [CSS Text Shadow Generator](#).

Here you see how black text with a 4 pixel rgb(217, 188, 201) colored shadow looks like.

```
.shadow{ text-shadow: 4px 4px 2px rgb(217, 188, 201) }
```

Border

The CSS property to change the border of an element to RGB 217, 188, 201 is called "border". The border property can be set on classes, ids or directly on the HTML element.

This example shows the color as border, it can be applied via the CSS property "border" or "border-color".

```
.border, #border, table{ border:4px solid rgb(217, 188, 201) }
```

If only the border color should be changed use the property border-color.

```
.border{ border-color:rgb(217, 188, 201) }
```

If you want to add a box shadow in that color use:

Here you see how a box with a 4 pixel rgb(217, 188, 201) colored shadow looks like.

```
.boxshadow{ -moz-box-shadow:4px 4px 4px  
4px rgb(217, 188, 201); -webkit-box-  
shadow:4px 4px 4px 4px rgb(217, 188, 201);  
box-shadow:4px 4px 4px 4px rgb(217, 188,  
201) }
```

Background

The CSS property to change the background color of an element to RGB 217, 188, 201 is called "background". The background property can be set on classes, ids or directly on the HTML element.

```
.background, #background, body{  
background: rgb(217, 188, 201) }
```

If only the background color should be changed can be used:

```
.background{ background-color: rgb(217,  
188, 201) }
```

This example shows the color as background, it is applied via the CSS property "background".

To optimize and compress your CSS code, you can use our [online CSS compressor and optimizer](#) based on csstidy. If you want to create a linear or radial gradient as background or border, check our [CSS Gradient Generator](#).

Hey! You found this booklet interesting? Support Converting Colors with the new Membership Option!

The pro membership hides all ads, plus gives you double the colors in the color bucket, and more awesome pro features!

[Learn more, Memberships starting at \\$2.50/m!](#)

**Follow me
on Twitter!**

@ConvertingColor